

<b>Flight Procedure Tracking Form</b>		<b>Action:</b> FLIGHT CHECK	<b>Task Type:</b> IAP	<b>Date Open:</b> 02/06/2018	<b>Task #:</b> 2018020634279801001	<b>Request #:</b> 20180206342798
<b>Procedure:</b> RNAV (GPS) RWY 32 AMDT 0B			<b>Airport ID:</b> KSEF	<b>Airport:</b> SEBRING RGNL		<b>Reimbursable #:</b> NO
<b>City:</b> SEBRING	<b>ST:</b> FL	<b>GPS #:</b>	<b>Estimated Chart Date:</b> 01/03/2019		<b>FICO #:</b>	
<b>Fac ID:</b> N/A		<b>Fac. Type:</b>		<b>Specialist:</b> KWEKU DONKOR		
<b>Procedure Review</b>						
	<b>Rec'd</b>	<b>Rel'd</b>	<b>Full Name</b>	<b>Comments</b>		
<b>Lead:</b>	03/23/2018	08/22/2018	DAVID TEFFETELLER	QUALITY Digitally signed by		
<b>QA:</b>	08/22/2018			24 DAVID W SAUER		
<b>Liaison:</b>				CHECKED Aug 29, 2018		
<b>Procedure Comments:</b> ENROUTE-NON <b>Remark Type:</b> INFORMATION  CANCELS FDC 8/3545 PERIODIC REVIEW RESULTING IN ABBREVIATED AMENDMENT - LNAV CONTROLLING OBSTACLE CHANGED FROM "159 TREE 272604N/08118850W" TO "171 TOWER (12-096090) 272618.050N/0811828.790W. LNAV MDA/HAT/VIS CHANGED FROM 420/360 TO 480/420. LNAV CAT C/D VIS CHANGED FROM 1 TO 1 1/8. CIRCLING CAT D CONTROLLING OBSTACLE CHANGED FROM "244 TANK (12-002665) 272721.00N/0812048.00W" TO "527 TOWER (12-001984) 272715.00N/0812422.00W". CIRCLING CAT D MDA/HAA/VIS CHANGED FROM 620/558/2 TO 880/818/2 3/4. CONTACT: PATRICK MULQUEEN 405-954-4073/DAVID TEFFETELLER 301-427-4767.						

WAAS CH <b>48925</b> <b>W32A</b>	APP CRS <b>320°</b>	Rwy Idg <b>4990</b> TDZE <b>60</b> Apt Elev <b>62</b>
----------------------------------------	------------------------	-------------------------------------------------------------

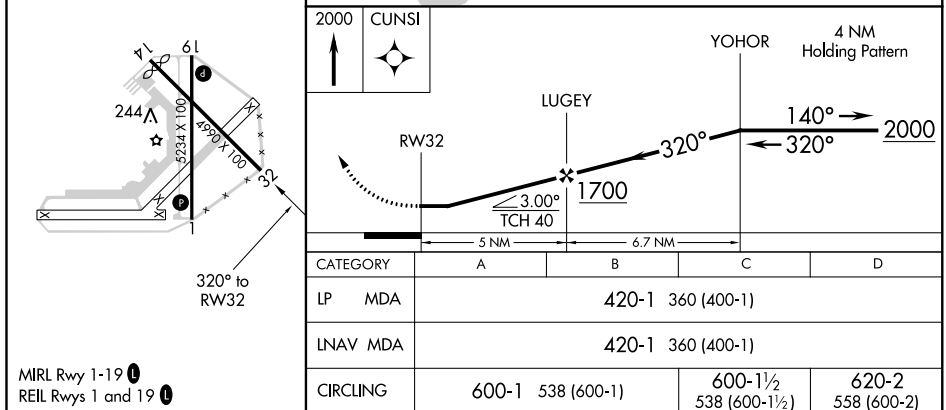
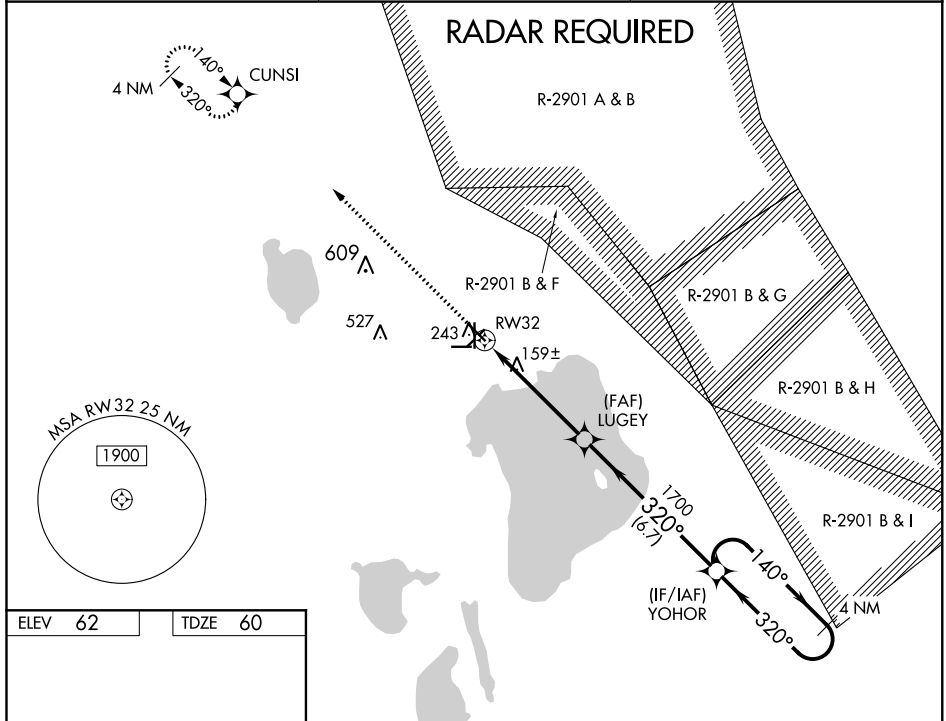
RNAV (GPS) RWY 32  
SEBRING RGNL (SEF)



DME/DME RNP-0.3 NA. Helicopter visibility reduction below  $\frac{3}{4}$  SM NA. When local altimeter setting not received, use Vero Beach altimeter setting and increase all MDA 140 feet; increase LP and LNAV Cats C and D visibility  $\frac{3}{8}$  mile and Circling Cat C visibility  $\frac{1}{2}$  mile and Circling Cat D visibility  $\frac{1}{4}$  mile. Night landing: Rwy 14, 32 NA.

**MISSED APPROACH:**  
Climb to 2000 direct  
CUNSI and hold.

AWOS-3 <b>119.475</b>	MIAMI CENTER <b>127.2 317.75</b>	UNICOM <b>122.7 (CTAF) 0</b>
--------------------------	-------------------------------------	---------------------------------



SEBRING, FLORIDA  
Orig-A 28MAY15

27°27'N-81°21'W

SEBRING RGNL (SEF)

## RNAV (GPS) RWY 32

SE-3, 24 MAY 2018 to 21 JUN 2018

SE-3, 24 MAY 2018 to 21 JUN 2018

SEBRING, FLORIDA

AL-386 (FAA)

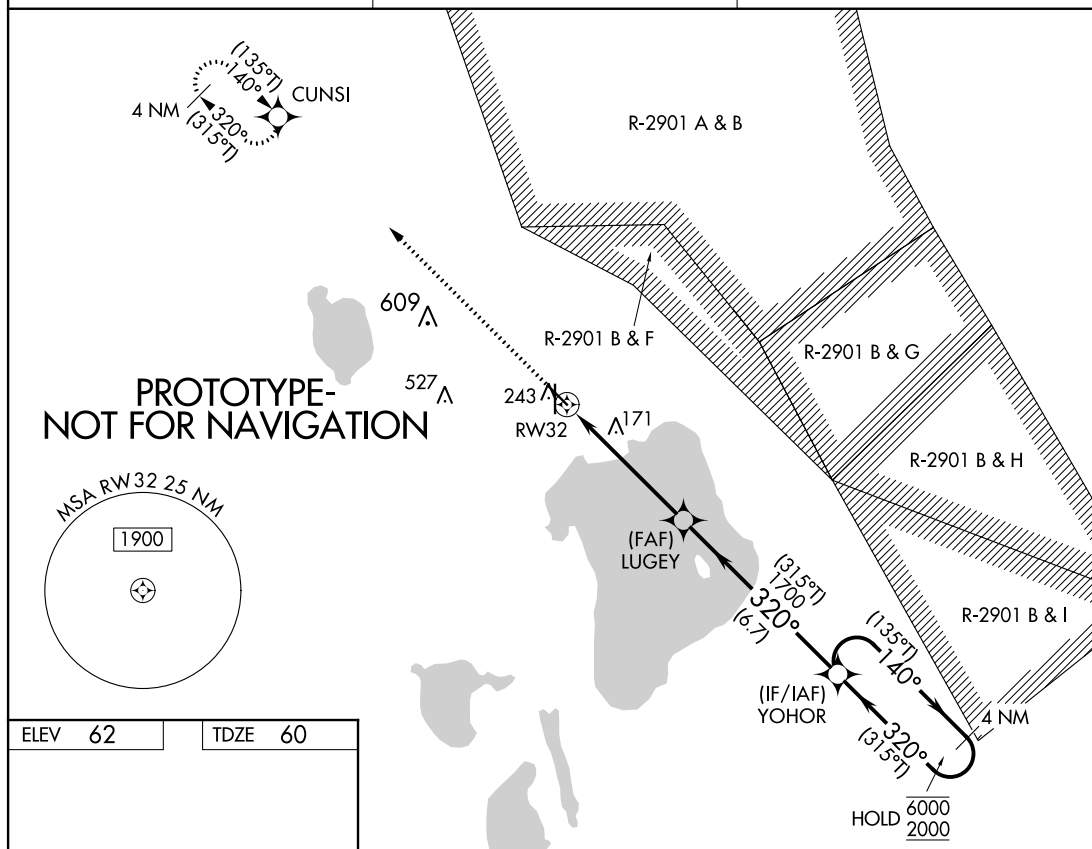
FIG

WAAS CH <b>48925</b> <b>W32A</b>	APP CRS <b>320°</b>	Rwy ldg TDZE Apt Elev	<b>4990</b> <b>60</b> <b>62</b>
----------------------------------------	------------------------	-----------------------------	---------------------------------------

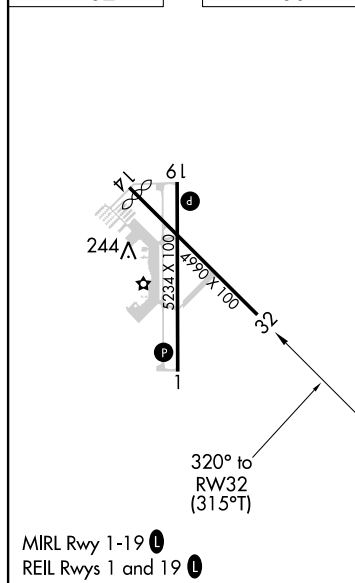
# RNAV (GPS) RWY 32



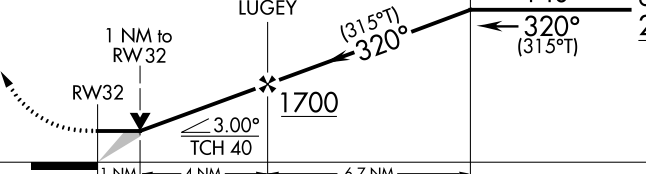

SEBRING RGNL (SEF)

RNP APCH.		MISSED APPROACH: Climb to 2000 direct CUNSI and hold.
<div><div><div></div><div></div></div><div>Circling Rwy 14 NA at night.</div></div>		
AWOS-3 119.475	MIAMI CENTER 127.2 317.75	UNICOM 122.7 (CTAF) 0



ELEV 62	TDZE 60
---------	---------



2000		CUNSI							
									
		RW32		LUGEY		YOHOR		4 NM Holding Pattern (135°T) 140° → 6000 ← 320° (315°T) 2000	
		1 NM to RW 32							
									
CATEGORY		A		B		C		D	
LP MDA		420-1 360 (400-1)							
LNAV MDA		480-1 420 (500-1)				480-1½ 420 (500-1½)			
 CIRCLING		600-1 538 (600-1)				600-1½ 538 (600-1½)		880-2¾ 818 (900-2¾)	

AUTOMATED AL-386 RNAV (GPS) RWY 32

SE-3

08/21/18  
COMPILER: KMF  
REVIEWER:  
DBL CHKR:  
EFF DATE: FIG

SEBRING, FLORIDA

Orig-B FIG

27°27'N-81°21'W

SEBRING RGNL (SEF)

# RNAV (GPS) RWY 32



81°15'0"W

27°30'0"N

Airport ID	KSEF	No	SEGMENT	OBSTRUCTION	ELEV
Airport Name	SEBRING RGNL	4	LNAV FINAL	TANK (12-096090)	171
City	SEBRING	9	CIRCLING A/B/C	TANK (12-002665)	243
State	FLORIDA	10	CIRCLING D	TOWER (12-001984)	527
Procedure ID	RNAV (GPS) 24				
Amendment #	1				
Map Scale	1:500,000				
CHART DATE	1/03/2019				

