

FEDERAL AVIATION ADMINISTRATION  
FLIGHT STANDARDS SERVICE  
STANDARD TERMINAL ARRIVAL (STAR)

Bearings, headings, courses, tracks and radials are magnetic. Elevations and altitudes are in feet, MSL. Altitudes are minimum altitudes unless otherwise indicated.  
Distances are in nautical miles (NM). Graphic depictions attached.

Arrival Name	Number	STAR Computer Code	Superseded Number	Dated	Effective Date
YLSTN (RNAV)	THREE	YLSTN.YLSTN3	TWO	02/01/2018	

TRANSITION ROUTES:

Transition Name	Transition Computer Codes	From FIX/NAVAID	To FIX/NAVAID	Mag Course	Distance	MEA	MOCA	MAA	Crossing Altitudes / Fixes
JEKUG	JEKUG.YLSTN3	JEKUG	JEKUG						AT/ABOVE 15000
			YLSTN	016.77	54.67	14500			AT/ABOVE 15000

ARRIVAL ROUTE DESCRIPTION:

FROM YLSTN ON TRACK 017.23/24.80 TO CROSS GRYNT AT OR ABOVE 11000 AND AT OR BELOW 250 KIAS.

LANDING RWY 10L: FROM GRYNT ON TRACK 347.77/22.28 TO CROSS BEARE AT 8000 AND AT OR BELOW 210 KIAS. EXPECT ASSIGNED APPROACH OR RADAR VECTORS TO FINAL APPROACH COURSE.

LANDING RWY 28R: FROM GRYNT ON TRACK 058.36/23.87 TO CROSS GRYZZ AT 9000 AND AT OR BELOW 220 KIAS, THEN ON HEADING 044.00. EXPECT ASSIGNED APPROACH OR RADAR VECTORS TO FINAL APPROACH COURSE.

PROCEDURAL DATA NOTES:

NOTE: RADAR REQUIRED

NOTE: RNAV 1

NOTE: GPS REQUIRED

FIXES AND/OR HOLDING PATTERNS:

CHART HOLDING AT YLSTN, HOLD S, RT, 016.77 INBOUND, 10 NM LEGS. CHART BIL VORTAC.

COMMUNICATIONS:

ATIS, APP CON, TWR, GND CON

AIRPORTS SERVED:

BILLINGS LOGAN INTL, (KBIL) BILLINGS, MT

LOST COMMUNICATIONS PROCEDURE:

REMARKS:

ADDITIONAL FLIGHT DATA:

DME/DME ASSESSMENT: UNSAT.

REFERENCE MAGNETIC VARIATION = KBIL 10E/2020.

FEDERAL AVIATION ADMINISTRATION  
FLIGHT STANDARDS SERVICE  
STANDARD TERMINAL ARRIVAL (STAR)

Bearings, headings, courses, tracks and radials are magnetic. Elevations and altitudes are in feet, MSL. Altitudes are minimum altitudes unless otherwise indicated.  
Distances are in nautical miles (NM). Graphic depictions attached.

Arrival Name	Number	STAR Computer Code	Superseded Number	Dated	Effective Date
<b>YLSTN (RNAV)</b>	<b>THREE</b>	<b>YLSTN.YLSTN3</b>	<b>TWO</b>	<b>02/01/2018</b>	
<u>FLIGHT INSPECTED BY:</u>			<i>Digitally signed by</i> <b>JACOB POWERS</b> Jun 15, 2018		
FLIGHT INSPECTION REVIEW NOT REQUIRED-PROCESSED IAW AIRCRAFT OPERATIONS GROUP (AJW-333) MEMO, DEC 22, 2017			Organization	Date	Signature
<u>DEVELOPED BY:</u>			<i>Digitally signed by</i> <b>JACOB POWERS</b> Jun 15, 2018		
Rodney Sabino, Support Manager			Salt Lake ARTCC	04/04/2018	
Name			Organization	Date	Signature
<u>APPROVED BY:</u>			<i>Digitally signed by</i> <b>JACOB POWERS</b> Jun 15, 2018		
MARLON J. ROBINSON, MANAGER			AJV-5440		
Name			Organization	Date	Signature

CHANGES:

1. AMENDED RWY 10L AND 28R ARRIVAL ROUTES BY REMOVING THE EXPECT APPROACHES AND ADDING EXPECT ASSIGNED APPROACH OR RADAR VECTORS TO FINAL APPROACH COURSE.
2. CHANGED VM HEADING FROM GRYZZ FROM 030 TO 044.

REASONS:

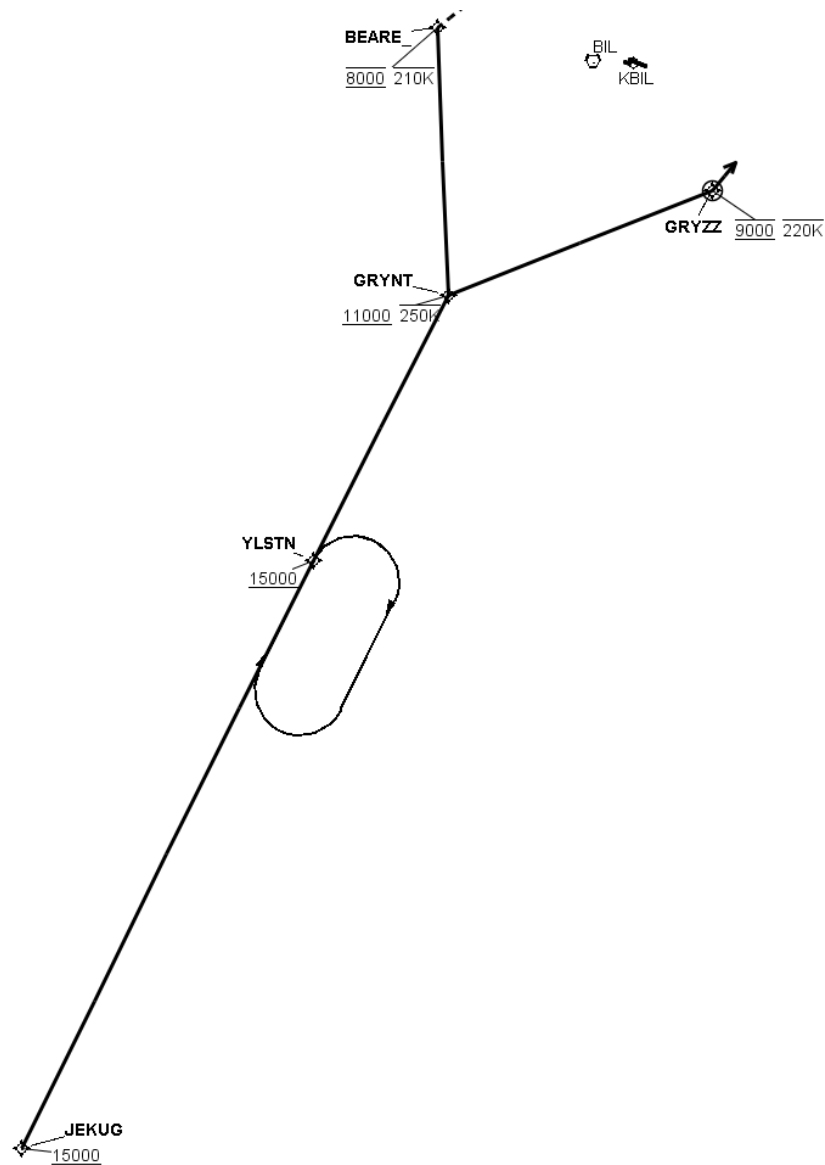
1. ATC REQUEST. CLARIFIES EXPECTATIONS AFTER STAR TERMINATION POINT.
2. ATC REQUEST. ALIGNS WITH SEVERAL RWY 28R IAP INITIALS FROM GRYZZ WHICH HAVE BEEN PREVIOUSLY FLIGHT CHECKED SAT.



FEDERAL AVIATION ADMINISTRATION  
FLIGHT STANDARDS SERVICE  
STANDARD TERMINAL ARRIVAL (STAR)

Bearings, headings, courses, tracks and radials are magnetic. Elevations and altitudes are in feet, MSL. Altitudes are minimum altitudes unless otherwise indicated.  
Distances are in nautical miles (NM). Graphic depictions attached.

Arrival Name	Number	STAR Computer Code	Superseded Number	Dated	Effective Date
YLSTN (RNAV)	THREE	YLSTN.YLSTN3	TWO	02/01/2018	
Graphic Depiction 4					



FEDERAL AVIATION ADMINISTRATION  
FLIGHT STANDARDS SERVICE  
STAR (DATA RECORD)

Arrival Name YLSTN (RNAV)	Number THREE		STAR Computer Code YLSTN.YLSTN3		Superseded Number TWO		Dated 02/01/2018		Effective Date
FIX/NAVAID	LAT/LONG	C	FO/FB	LEG TYPE	TC	DIST (NM)	ALTITUDE	SPEED	REMARKS
En Route Transition									
JEKUG	441822.44N / 1094543.17W	Y		IF			AT/ABOVE 15000		JEKUG.YLSTN3
YLSTN	450705.75N / 1091056.33W	Y	FB	TF	026.77	54.67	AT/ABOVE 15000		
Common Route									
YLSTN	450705.75N / 1091056.33W	Y		IF			AT/ABOVE 15000		YLSTN.YLSTN3
GRYNT	452907.34N / 1085448.51W	Y	FB	TF	027.23	24.80	AT/ABOVE 11000	AT/BELOW 250K	
Runway Transition									
GRYNT	452907.34N / 1085448.51W	Y		IF			AT/ABOVE 11000	AT/BELOW 250K	
BEARE	455122.64N / 1085603.02W	Y	FB	TF	357.77	22.28	AT 8000	AT/BELOW 210K	
KBIL:RWY 10L									
Runway Transition									
GRYNT	452907.34N / 1085448.51W	Y		IF			AT/ABOVE 11000	AT/BELOW 250K	
GRYZZ	453751.19N / 1082311.06W	Y	FO	TF	068.36	23.87	AT 9000	AT/BELOW 220K	
KBIL:RWY 28R				VM	054.00				

