
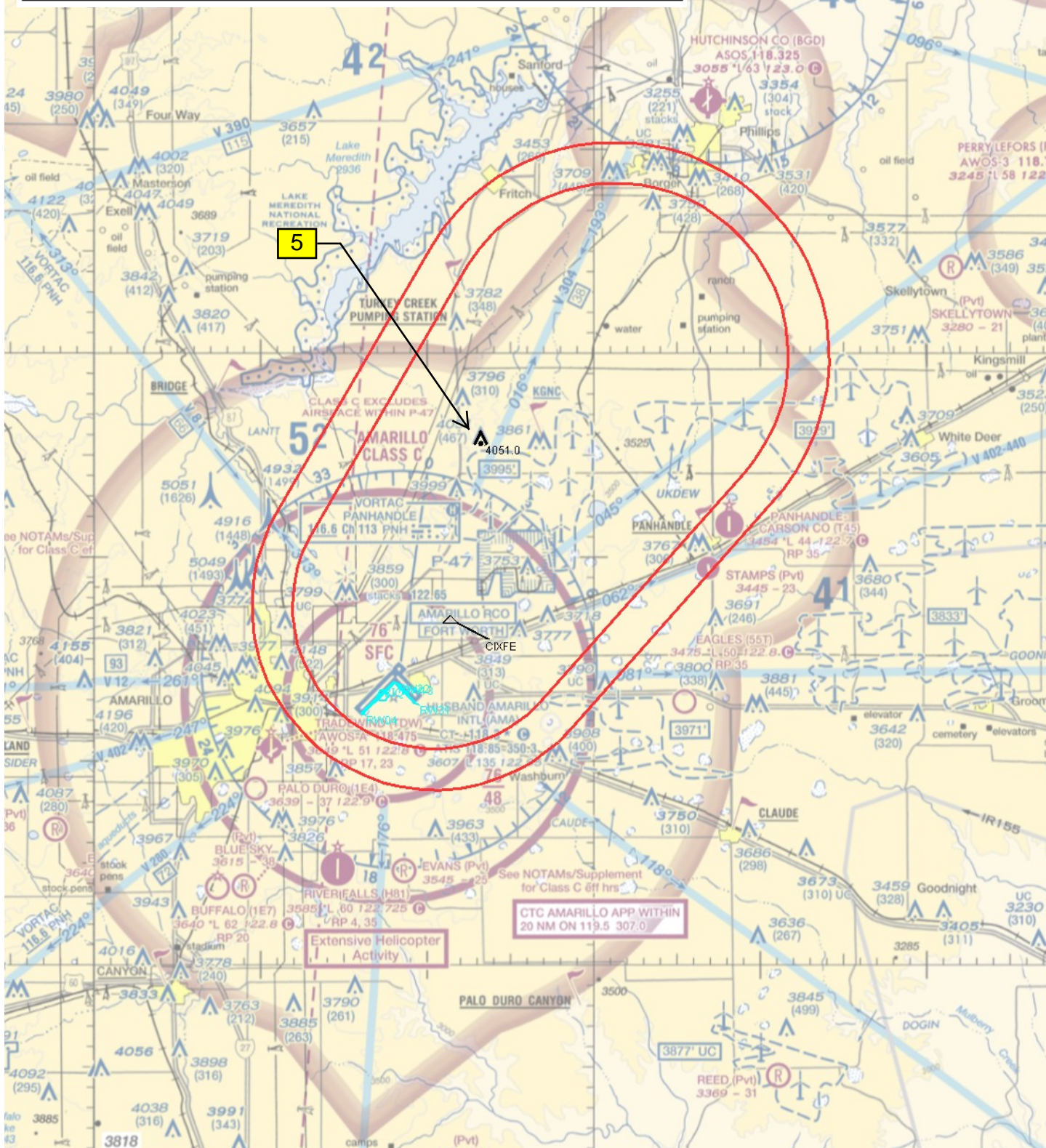


Flight Procedure Tracking Form		Action: AMENDMENT	Task Type: IAP	Date Open: 02/10/2018	Task #: 201801303062463D001	Request #: 20180130306246
Procedure: LDA/DME RWY 22 AMDT 1A			Airport ID: KAMA	Airport: RICK HUSBAND AMARILLO INTL		Reimbursable #: NO
City: AMARILLO	ST: TX	GPS #:	Estimated Chart Date: 08/16/2018		FICO #:	
Fac ID: RIQ		Fac. Type: ILS			Specialist: RUSSELL ROSLEWSKI	
Procedure Review						
	Rec'd	Rel'd	Full Name	Comments		
Lead:	02/12/2018					
QA:						
Liaison:						
Procedure Comments: ENROUTE-NON Remark Type: INFORMATION DAY BACK PNOTAM POC: DION LANCIA, 405-954-1267 FLIGHT INSPECTION REVIEW NOT REQUIRED - PROCESSED IAW AIRCRAFT OPERATIONS GROUP (AJW-333) MEMO, DEC 22, 2017. CANCEL T-NOTAM 7/6133 WHEN ISSUED.						



Airport ID	KAMA	#	Segment	Obstruction	Elev
Apt Name	Rick Husband Amarillo Intl	5	PT	Tower	3051
City	Amarillo				
State	TX				
Scale	1:500k				
Proc ID	LDA/DME RWY 22				
Amdt #	1A				



OLD

AMARILLO, TEXAS

15176

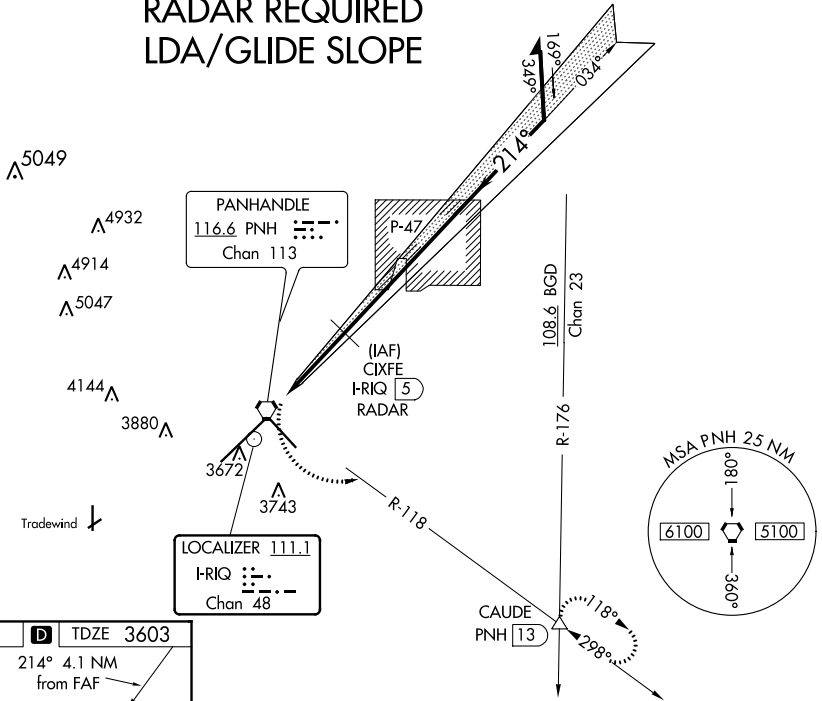
LOC I-RIQ 111.1 Chan 48	APP CRS 214°	Rwy Idg 13502 TDZE 3603 Apt Elev 3605
---	------------------------	--

LDA/DME RWY 22
RICK HUSBAND AMARILLO INTL (AMA)

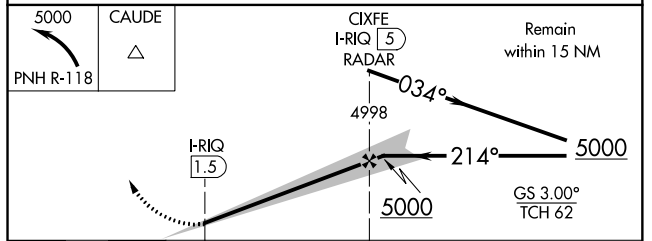
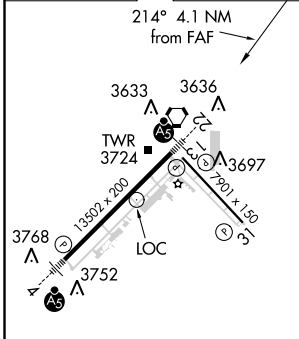
Final approach course offset 4.45 degrees intersects the runway centerline 2509' from Rwy 22. For inop MALSR, increase S-LDA 22 Cat D and E visibilities to 1, S-LDA/GS22 to ¾ all Cats.	MALSR ASR	MISSED APPROACH: Climbing left turn to 5000 via PNH VORTAC R-118 to CAUDE Int and hold.
---	---------------------	--

ATIS 118.85 350.3	AMARILLO APP CON★ 119.5 307.0	AMARILLO TOWER★ 118.3(CTAF) 257.9	GND CON 121.9 348.6	CLNC DEL 121.65	UNICOM 122.95
-----------------------------	---	---	-------------------------------	---------------------------	-------------------------

RADAR REQUIRED LDA/GLIDE SLOPE



ELEV 3605	D	TDZE 3603
-----------	----------	-----------



CATEGORY	A	B	C	D	E
LDA/GS-22	3853-½ 250 (300-½)				
LDA-22	3900-½ 297 (300-½)		3900-¾ 297 (300-¾)		
CIRCLING	4080-1 475 (500-1)		4080-1½ 475 (500-1½)	4240-2 635 (700-2)	4460-3 855 (900-3)

REIL Rwy 13
REIL Rwy 31
HIRL Rwy 4-22 and 13-31

AMARILLO, TEXAS
Amdt 1 25MAR99

35°13'N-101°42' W

RICK HUSBAND AMARILLO INTL (AMA)
LDA/DME RWY 22

SC-2, 29 MAR 2018 to 26 APR 2018

SC-2, 29 MAR 2018 to 26 APR 2018