

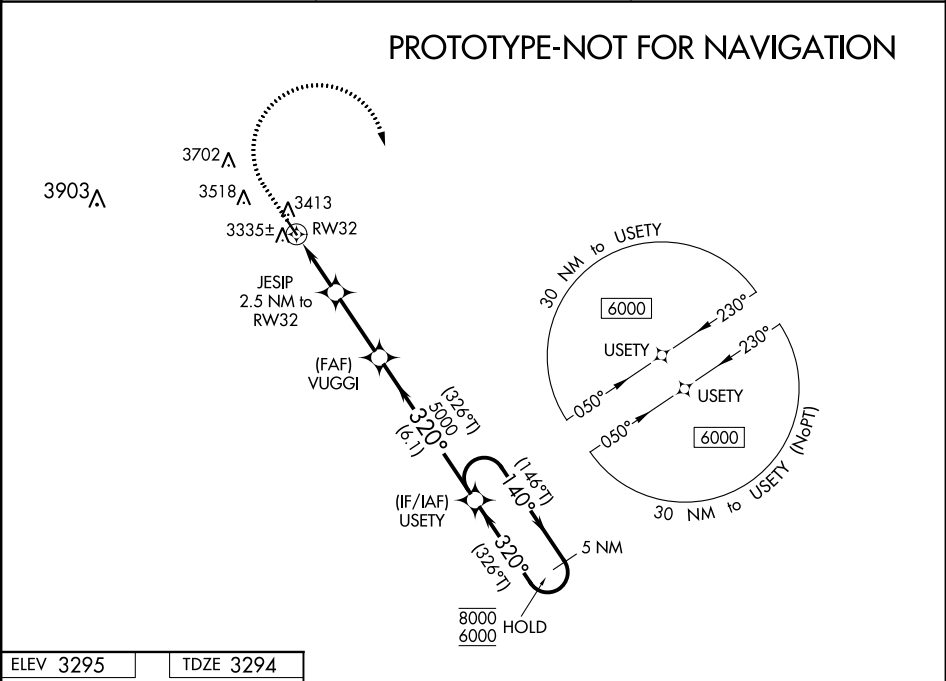
Flight Procedure Tracking Form		Action: AMENDMENT	Task Type: IAP	Date Open: 02/10/2018	Task #: 2018013030624638001	Request #: 20180130306246
Procedure: RNAV (GPS) RWY 32 AMDT 1			Airport ID: K9V6	Airport: MARTIN MUNI		Reimbursable #: NO
City: MARTIN	ST: SD	GPS #:	Estimated Chart Date: 08/16/2018		FICO #:	
Fac ID: N/A		Fac. Type:		Specialist: DUSTIN DAVIDSON		
Procedure Review						
	Rec'd	Rel'd	Full Name	Comments		
Lead:	02/12/2018	03/30/2018	DION LANCIA	QUALITY		
QA:	03/30/2018			22 5.1.2018 BD		
Liaison:				CHECKED		
Procedure Comments:			Remark Type: INFORMATION			
<p>ACTIVE DATA USED FOR AIRPORT AND RUNWAYS.</p> <p>CONTACT: ROBERT HAMILTON 405-954-4608.</p>						

WAAS CH 77540 W32A	APP CRS 320°	Rwy Idg 3699 TDZE 3294 Apt Elev 3295
--	------------------------	---

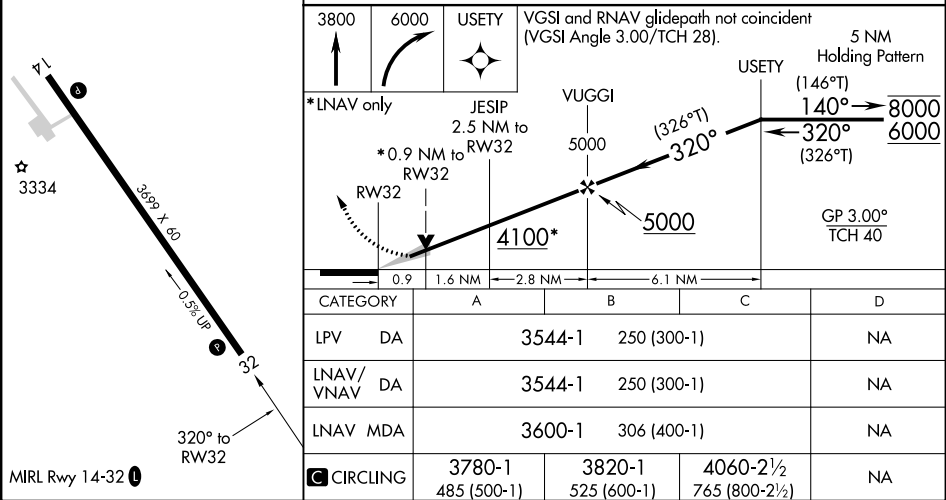
RNAV (GPS) RWY 32
MARTIN MUNI (9V6)

RNP APCH.	MISSED APPROACH: Climb to 3800 then climbing right turn to 6000 direct USETY and hold.
-----------	--

AWOS-3 123.0	DENVER CENTER 127.95 338.2	CTAF 122.9
------------------------	--------------------------------------	----------------------



ELEV 3295	TDZE 3294
-----------	-----------

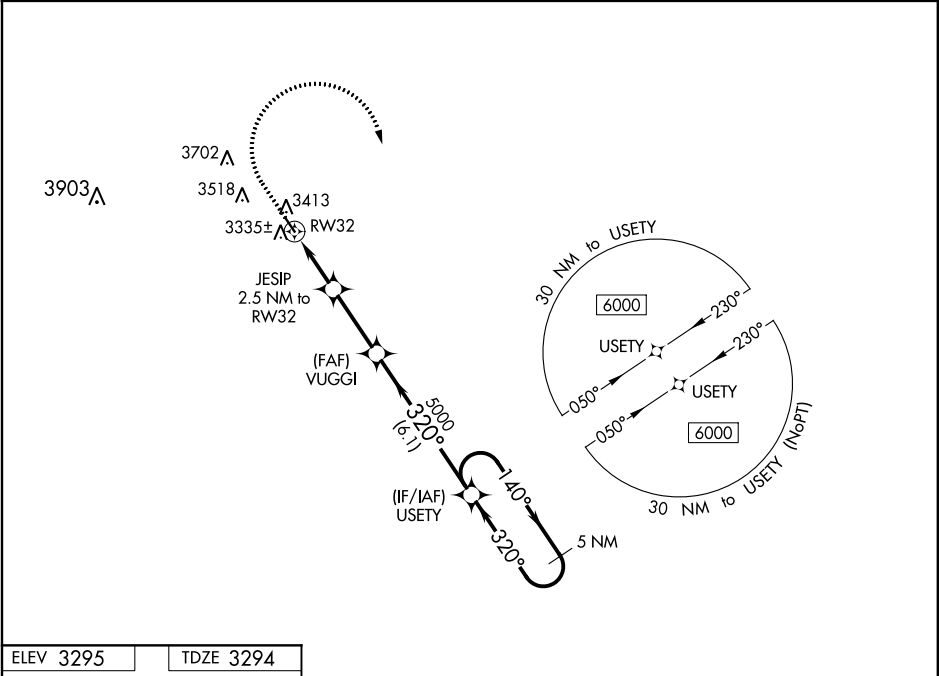




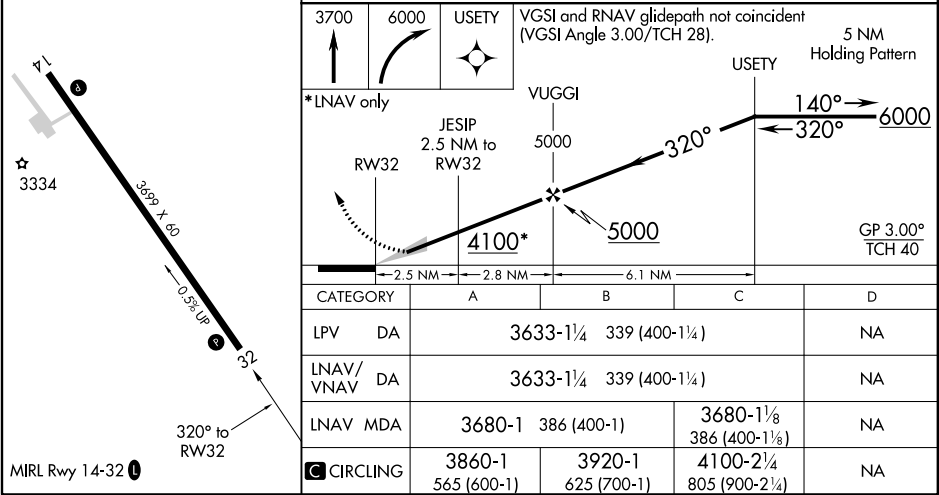
WAAS CH 77540 W32A	APP CRS 320°	Rwy Idg 3699 TDZE 3294 Apt Elev 3295
--	------------------------	---

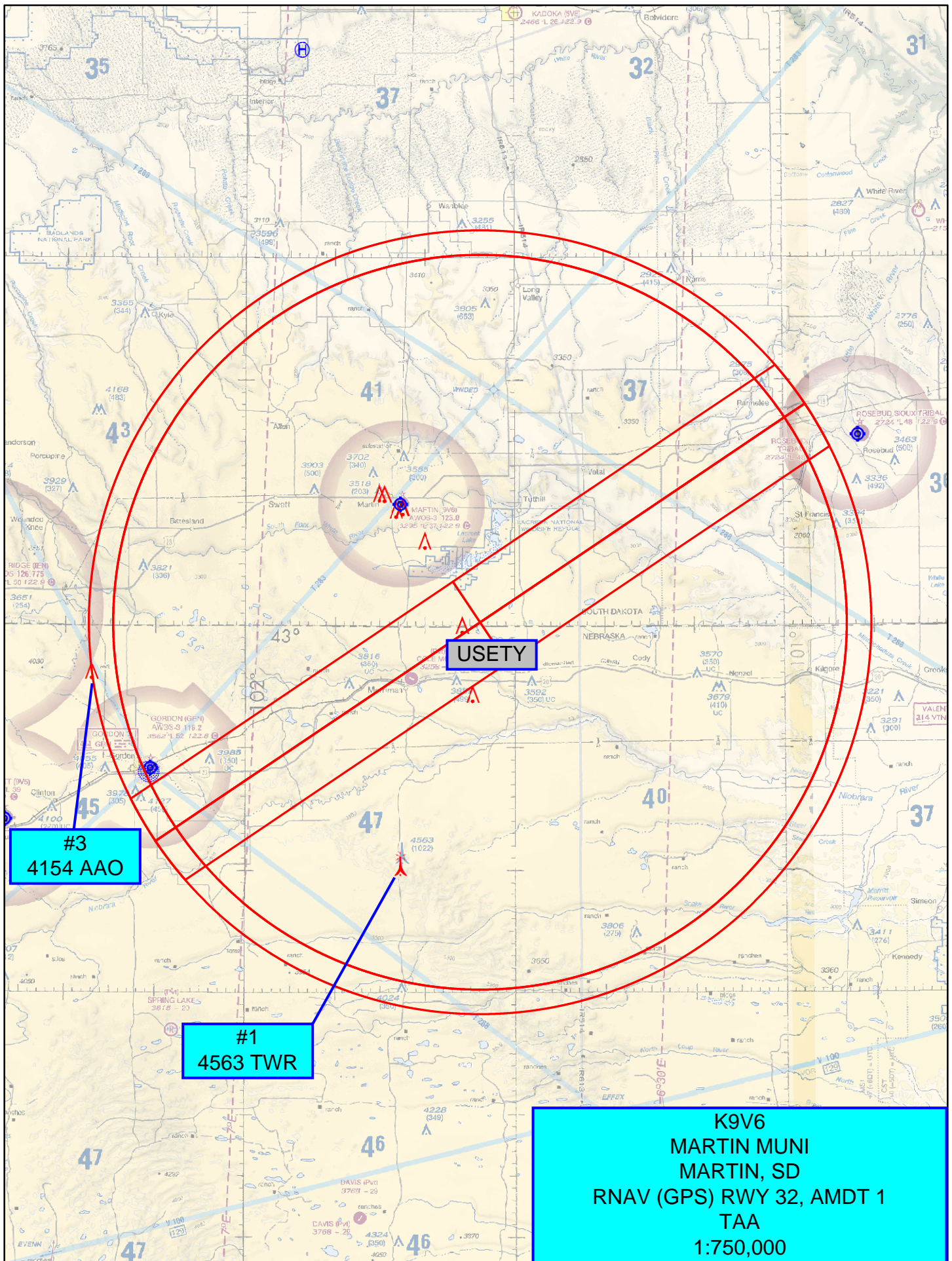
RNAV (GPS) RWY 32
MARTIN MUNI (9V6)

▽ ▲ NA	Baro-VNAV NA. DME/DME RNP-0.3 NA. Use Pine Ridge altimeter setting.	MISSED APPROACH: Climb to 3700 then climbing right turn to 6000 direct USETY and hold.	
AWOS-3 123.0	PINE RIDGE ASOS 126.775	DENVER CENTER 127.95 338.2	CTAF 122.9 0



ELEV 3295	TDZE 3294
-----------	-----------

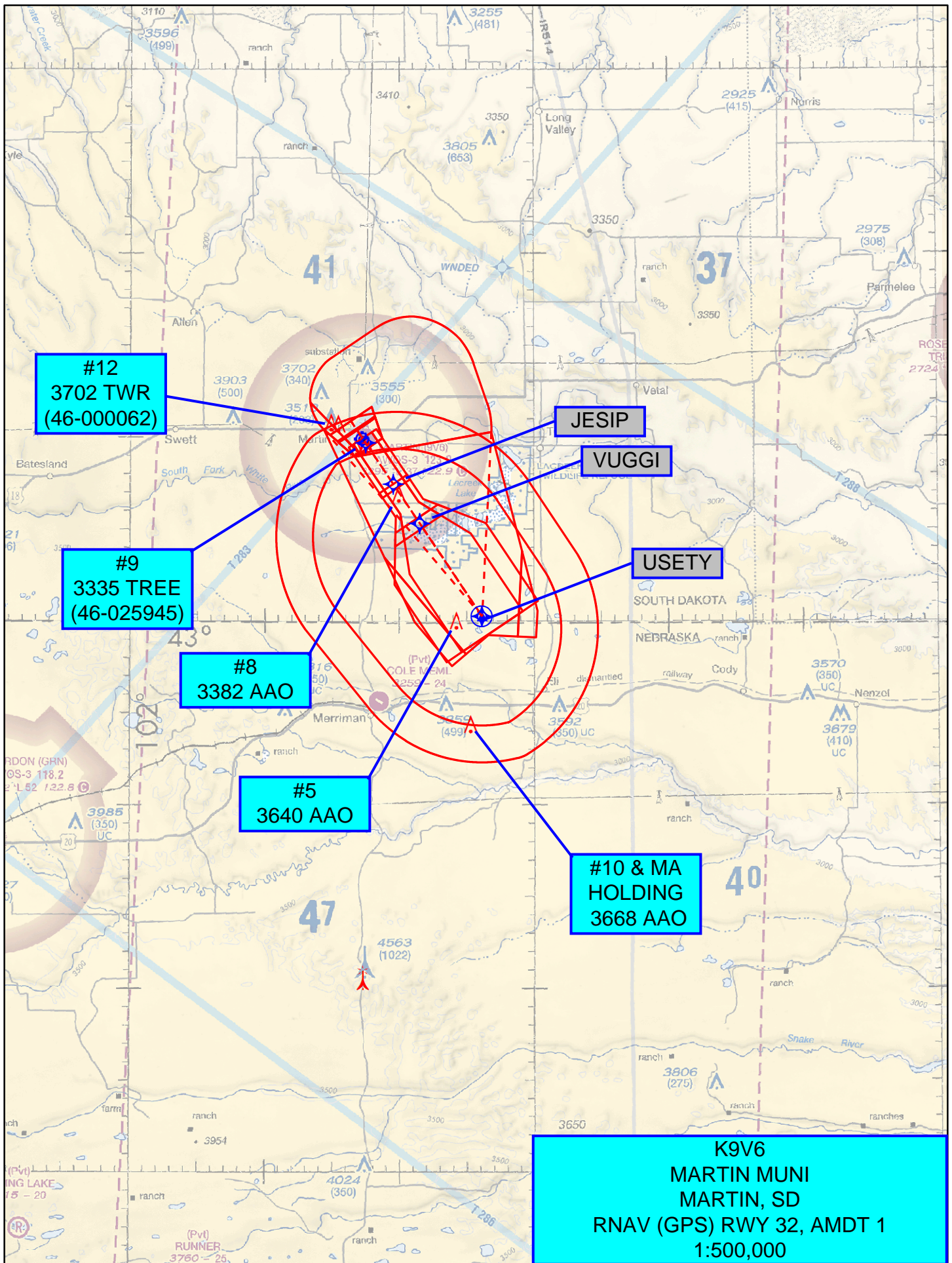


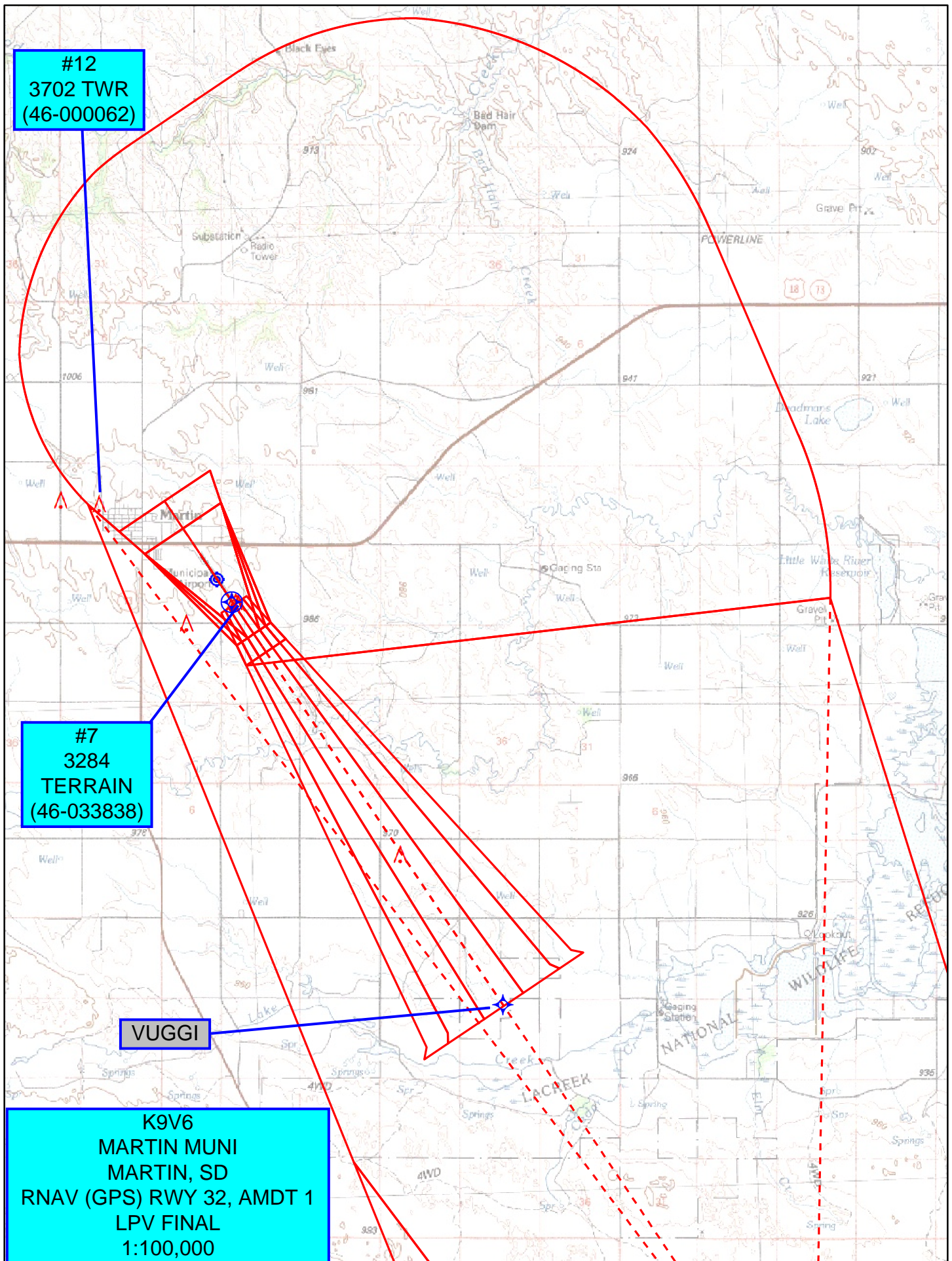


#3
4154 AAO

#1
4563 TWR

K9V6
MARTIN MUNI
MARTIN, SD
RNAV (GPS) RWY 32, AMDT 1
TAA
1:750,000





#12
3702 TWR
(46-000062)

VUGGI

K9V6
MARTIN MUNI
MARTIN, SD
RNAV (GPS) RWY 32, AMDT 1
LNAV/VNAV FINAL
1:100,000

