

<b>Flight Procedure Tracking Form</b>		<b>Action:</b> FLIGHT CHECK	<b>Task Type:</b> IAP	<b>Date Open:</b> 01/29/2018	<b>Task #:</b> 2018012931201702001	<b>Request #:</b> 20180129312017
<b>Procedure:</b> ILS OR LOC RWY 4R AMDT 11			<b>Airport ID:</b> KBOS	<b>Airport:</b> GENERAL EDWARD LAWRENCE LOGAN INTL		<b>Reimbursable #:</b> NO
<b>City:</b> BOSTON	<b>ST:</b> MA	<b>GPS #:</b>	<b>Estimated Chart Date:</b> 03/26/2020		<b>FICO #:</b> 1221836	
<b>Fac ID:</b> BOS		<b>Fac. Type:</b> ILS			<b>Specialist:</b> STEVEN SCHUTRUM	
<b>Procedure Review</b>						
	<b>Rec'd</b>	<b>Rel'd</b>	<b>Full Name</b>	<b>Comments</b>		
<b>Lead:</b>	09/06/2018	12/03/2018	WARDELL HENNING	Digitally signed by		
<b>QA:</b>	12/03/2018	12/03/2018	ANDI LAU	<b>WARDELL HENNING</b>		
<b>Liaison:</b>	12/03/2018	12/04/2018	MARY MCDONALD	Nov 18, 2019		
<b>Procedure Comments:</b> ENROUTE-NON <b>Remark Type:</b> INFORMATION  ADDED RNAV INITIAL FROM GOSHI TO WINNI. PENDING DATA USED FOR I-BOS. ACTIVE AIRPORT DATA USED FOR KBOS ASSIGNED MAGVAR: I-BOS: 15W/2020. CONTACT: WARDELL HENNING: 405.954.89954/THERON CYRUS: 405.954.0370.  09/25/2019: THIS IS AN UPDATED COPY OF THE FORM DEVELOPED ON: 10/04/2018: 1. CHANGED IN NOTES: CHART SPEED ICON IN PLANVIEW AT GOSHI: MAX 210 KIAS TO: CHART SPEED ICON IN PLANVIEW AT GOSHI: AT 210 KIAS.						





LOC/DME	I-BOS	APP CRS	Rwy Idg	8851
110.3		035°	TDZE	18
Chan 40			Alt Elev	19

ILS or LOC RWY 4R

GENERAL EDWARD LAWRENCE LOGAN INTL (BOS)

RNAV 1-GPS or RADAR required for procedure entry.  
DME or RADAR required.

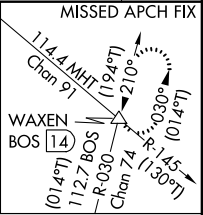
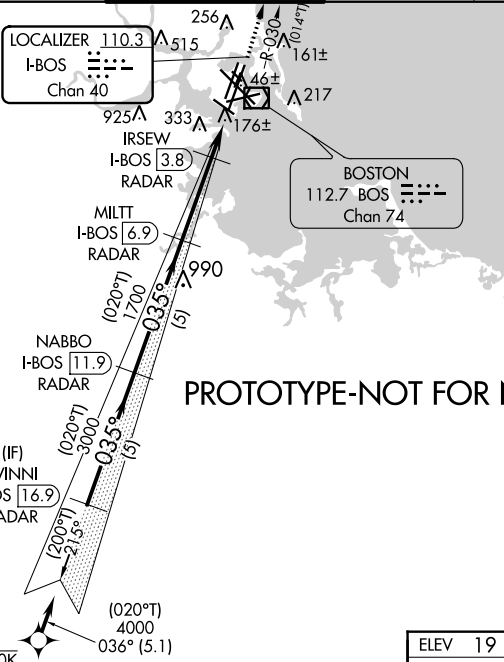
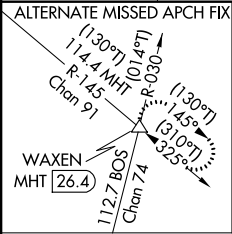
# For inop ALS, increase S-LOC 4R Cat A/B visibility to RVR 5500; Rwy 4R helicopter visibility reduction below 4000 RVR NA. ↑ When vessels taller than 144 feet present, S-ILS 4R NA.

ALSF-2

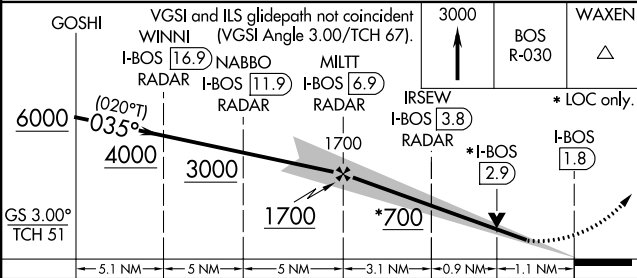
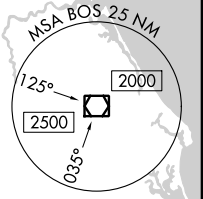


MISSED APPROACH: Climb to 3000 on BOS VOR/DME R-030 to WAXEN INT/BOS 14 DME and hold.

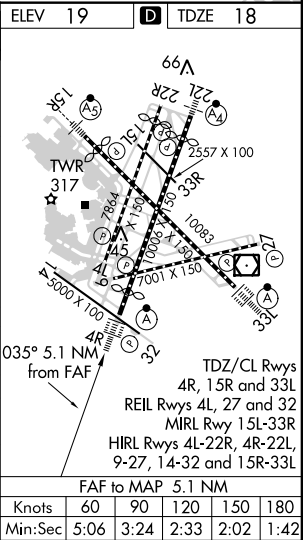
D-ATIS	BOSTON APP CON	BOSTON TOWER	GND CON	CLNC DEL	CPDLC
135.0	120.6 263.1	128.8 257.8	121.9	121.65 257.8	



PROTOTYPE-NOT FOR NAVIGATION



CATEGORY	A	B	C	D
S-ILS 4R		218/18	200 (200-1/2)	
S-LOC 4R	440/24	422 (500-1/2)	440/40	422 (500-3/4)
CIRCLING	940-1 1/4 921 (1000-1 1/4)	1040-1 1/2 1021 (1100-1 1/2)	620-1 3/4 601 (700-1 3/4)	620-2 601 (700-2)
↑ APPROACH MINIMA WHEN CONTROL TOWER REPORTS TALL VESSELS IN APPROACH AREA				
S-ILS 4R #	374/40	356 (400-3/4)		
S-LOC 4R #	440/40	422 (500-3/4)		

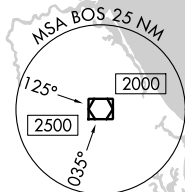


ILS or LOC RWY 4R

**ILS RWY 4R (CAT II & III)**  
GENERAL EDWARD LAWRENCE LOGAN INTL (BOS)

**MISSED APPROACH:** Climb to 3000 on BOS VOR/DME R-030 to WAXEN INT/BOS 14 DME and hold.

PROTOTYPE-NOT FOR NAVIGATION



ELEV	19	<b>D</b>	TDZE	18
------	----	----------	------	----

WAXEN  
△

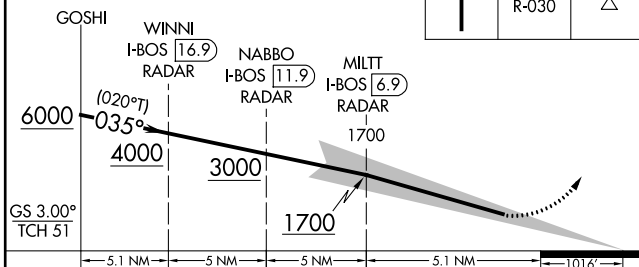


Diagram illustrating the runway layout for the TWR 317. The diagram shows three intersecting runways: 4L-22R, 4R-22L, and 15L-33R. Runway 4L-22R is oriented 221/229 degrees with a width of 255' x 100'. Runway 4R-22L is oriented 221/229 degrees with a width of 255' x 100'. Runway 15L-33R is oriented 150/330 degrees with a width of 100' x 150'. The diagram also shows various taxiways and parking areas, including a large parking area labeled 'A-5000' x 100'. The diagram is labeled with 'TWR 317' and 'ELEV 19'.

TDZ/CL Rwyw  
 4R, 15R and 33L  
 REIL Rwyw 4L, 27 and 32  
 MIRL Rwy 15L-33R  
 HIRL Rwyw 4L-22R, 4R-22L,  
 9-27, 14-32 and 15R-33L

CATEGORY II & III ILS - SPECIAL AIRCREW  
& AIRCRAFT CERTIFICATION REQUIRED

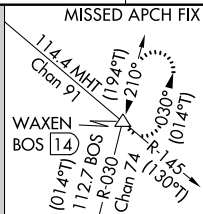
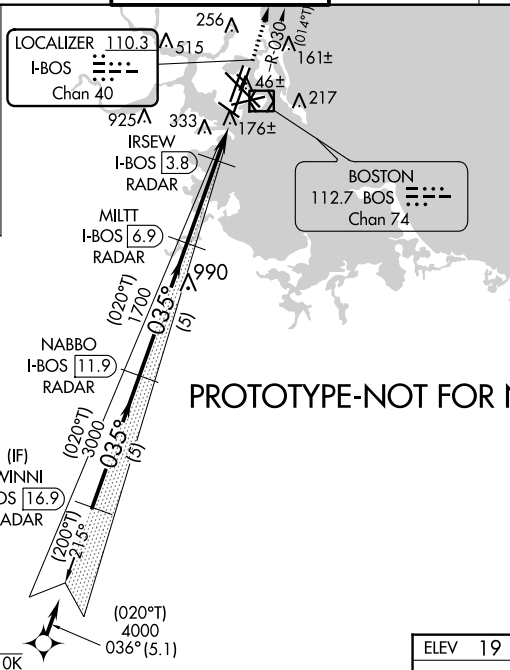
GENERAL EDWARD LAWRENCE LOGAN INTL (BOS)

42°22'N-71°00'W

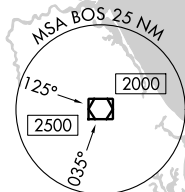
ILS RWY 4R (CAT II & III)

ILS RWY 4R (SA CAT I)  
GENERAL EDWARD LAWRENCE LOGAN INTL (BOS)

**MISSED APPROACH:** Climb to 3000 on BOS VOR/DME R-030 to WAXEN INT/BOS 14 DME and hold.



PROTOTYPE-NOT FOR NAVIGATION

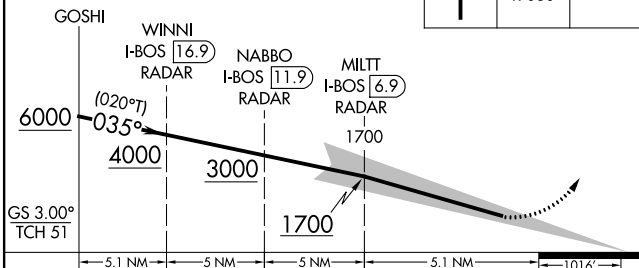


ELEV	19	<b>D</b>	TDZE	18
------	----	----------	------	----

300

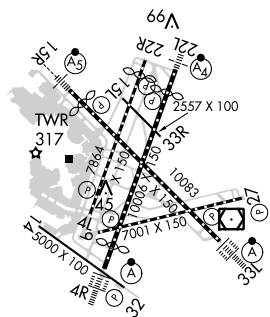
BO:

WAXEN



CATEGORY	A	B	C	D
S-ILS 4R	RA 168/14 150 DA 168			

SA CATEGORY I ILS - SPECIAL AIRCREW  
& AIRCRAFT CERTIFICATION REQUIRED



TDZ/CL Rwys  
4R, 15R and 33L  
REIL Rwys 4L, 27 and 32  
MIRL Rwy 15L-33R  
HIRL Rwys 4L-22R, 4R-22L,



NM 1 2 3 4 5 6 7 8 9 10  
FT 8000 16000 24000 32000 40000 48000 56000 64000

fposrs | bos\_il4r (PROD) | 25 Sep 2018 07:08:17 | 1" = 8333.3 feet (MAP)



ILS OR LOC RWY 4R, AMDT 11  
BOSTON, MA  
GENERAL EDWARD LAWRENCE (KBOS)  
ILS FINAL 100K (NO SHIPS)

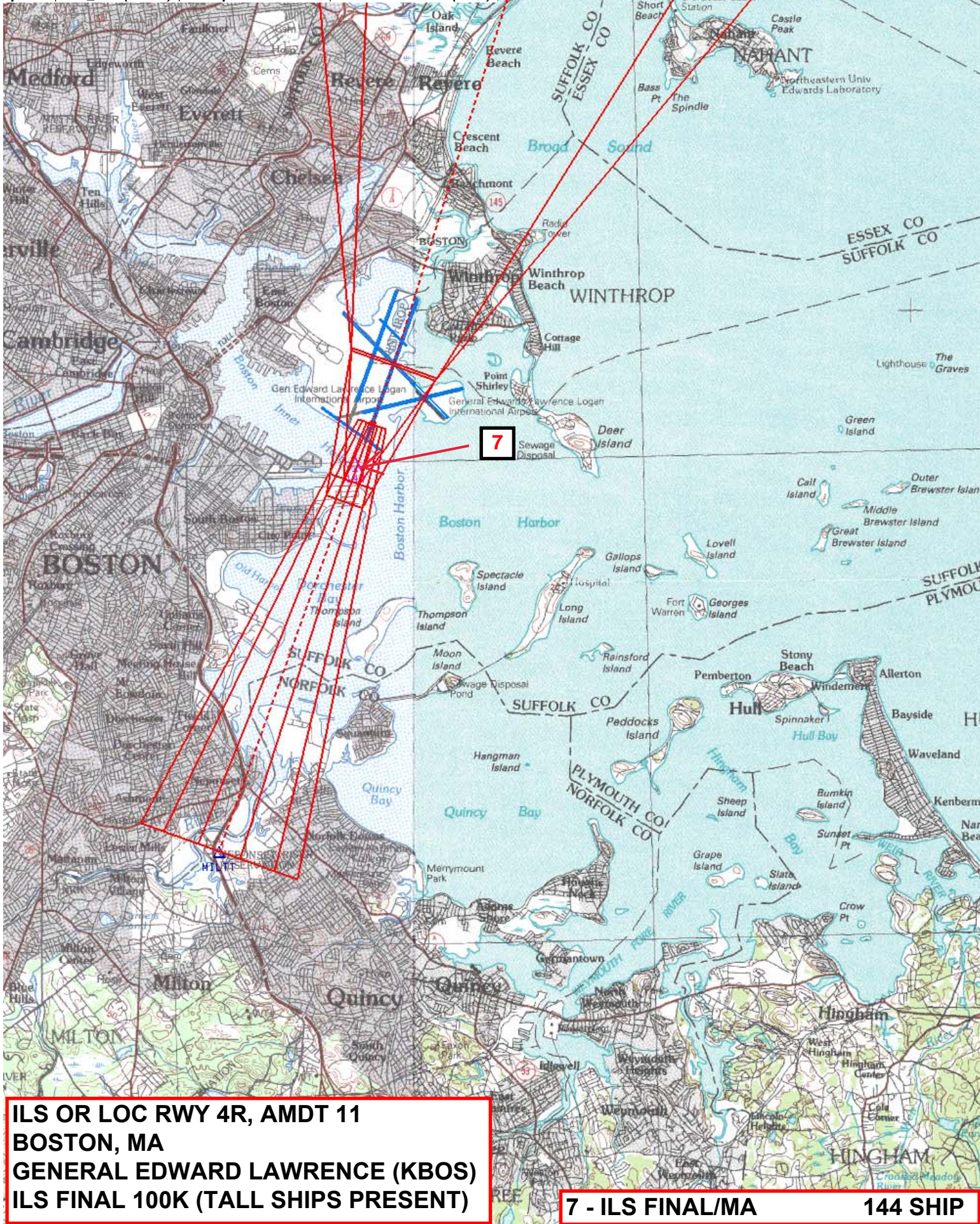
ILS FINAL

ASC



NM 1 2 3 4 5 6 7 8 9 10  
FT 8000 16000 24000 32000 40000 48000 56000 64000

fposrs | bos\_il4rt (PROD) | 25 Sep 2018 08:23:38 | 1" = 8333.3 feet (MAP)



ILS OR LOC RWY 4R, AMDT 11  
BOSTON, MA  
GENERAL EDWARD LAWRENCE (KBOS)  
ILS FINAL 100K (TALL SHIPS PRESENT)

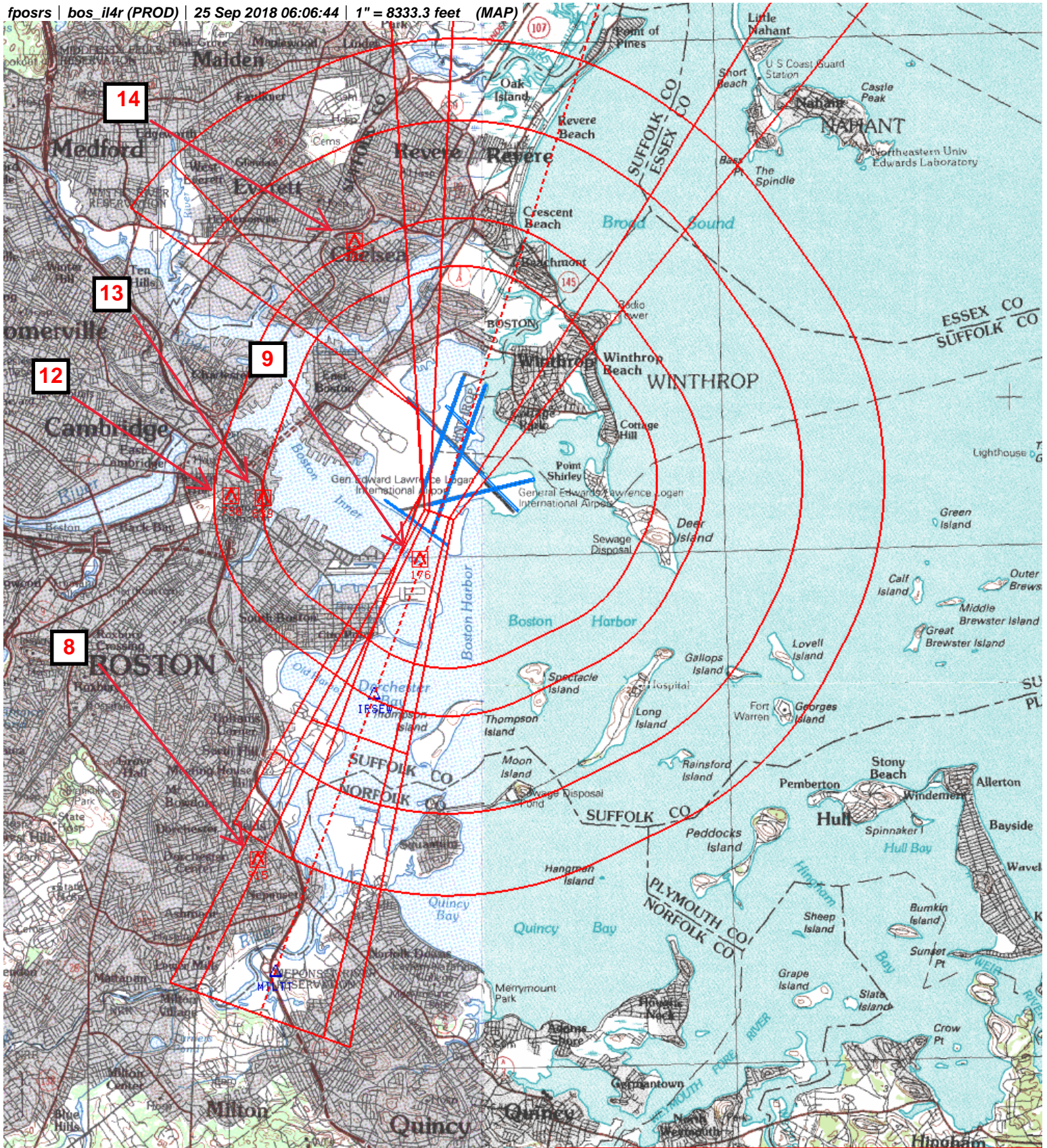
7 - ILS FINAL/MA

144 SHIP



NM 1 2 3 4 5 6 7 8 9 10  
FT 8000 16000 24000 32000 40000 48000 56000 64000

fposrs | bos\_il4r (PROD) | 25 Sep 2018 06:06:44 | 1" = 8333.3 feet (MAP)



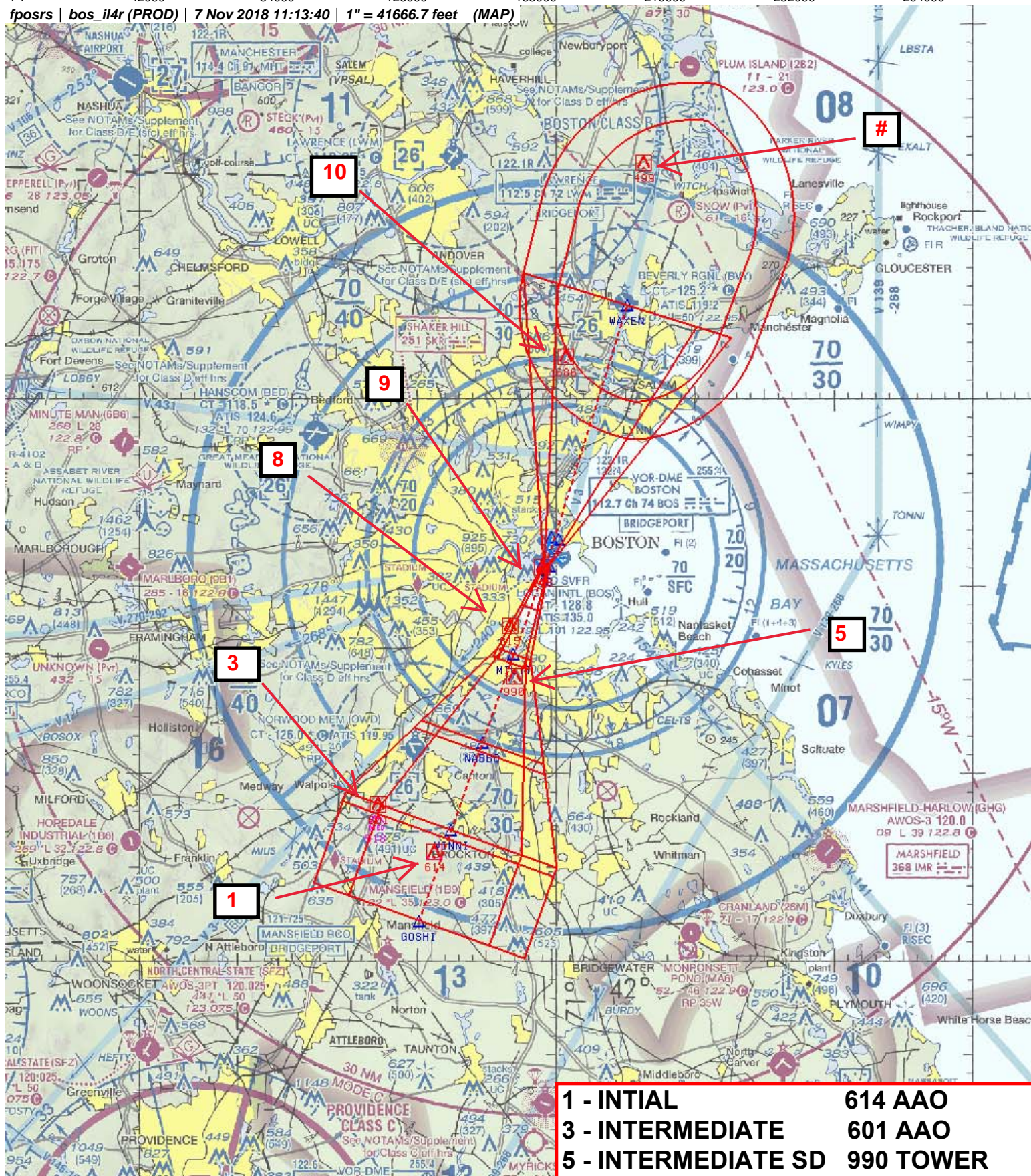
ILS OR LOC RWY 4R, AMDT 11  
BOSTON, MA  
GENERAL EDWARD LAWRENCE (KBOS)  
LOC FINAL 100K

8 - LOC FINAL	315 AAO
9 - LOC STEPDOWN	176 SHIP
12 - CAT A CIRCLING	639 BLDG
13 - CAT B CIRCLING	730 BLDG
14 - CAT C/D CIRCLING	302 TANK



NM 7 14 21 28 35 42 49  
 FT 42000 84000 126000 168000 210000 252000 294000

fposrs | bos\_il4r (PROD) | 7 Nov 2018 11:13:40 | 1" = 41666.7 feet (MAP)



ILS OR LOC RWY 4R, AMDT 11  
 BOSTON, MA  
 GENERAL EDWARD LAWRENCE (KBOS)  
 500K

1 - INTIAL	614 AAO
3 - INTERMEDIATE	601 AAO
5 - INTERMEDIATE SD	990 TOWER
8 - LOC FINAL	315 AAO
9 - LOC STEPDOWN	176 SHIP
10 - MA LVL SFC	686 TOWER
# - HOLDING	499 AAO



