

Flight Procedure Tracking Form		Action: FLIGHT CHECK	Task Type: IAP	Date Open: 01/24/2018	Task #: 2018012433324301001	Request #: 20180124333243
Procedure: RNAV (GPS) RWY 17 AMDT 1B			Airport ID: K5C1	Airport: BOERNE STAGE FIELD		Reimbursable #: NO
City: SAN ANTONIO	ST: TX	GPS #:	Estimated Chart Date: 07/19/2018		FICO #:	
Fac ID: N/A		Fac. Type:			Specialist: NEAL BLOOMQUIST	
Procedure Review						
	Rec'd	Rel'd	Full Name		Comments	
Lead:	01/25/2018					
QA:			J ZEDER 04/14/2018			
Liaison:						
Procedure Comments:			Remark Type: INFORMATION			
ABBREVIATED AMENDMENT. AMEND PROCEDURE TO CLEAR NOTAM FDC 8/5067. CONTACT: LONNIE EVERHART 405.954.4576.						

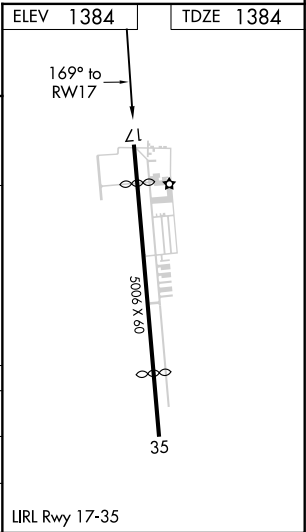
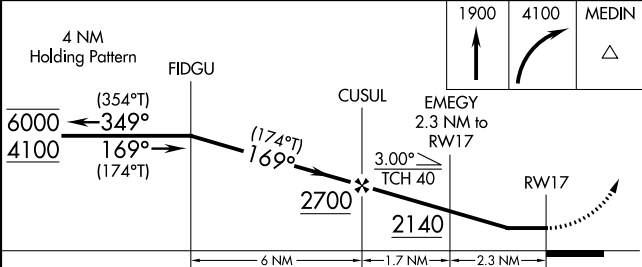
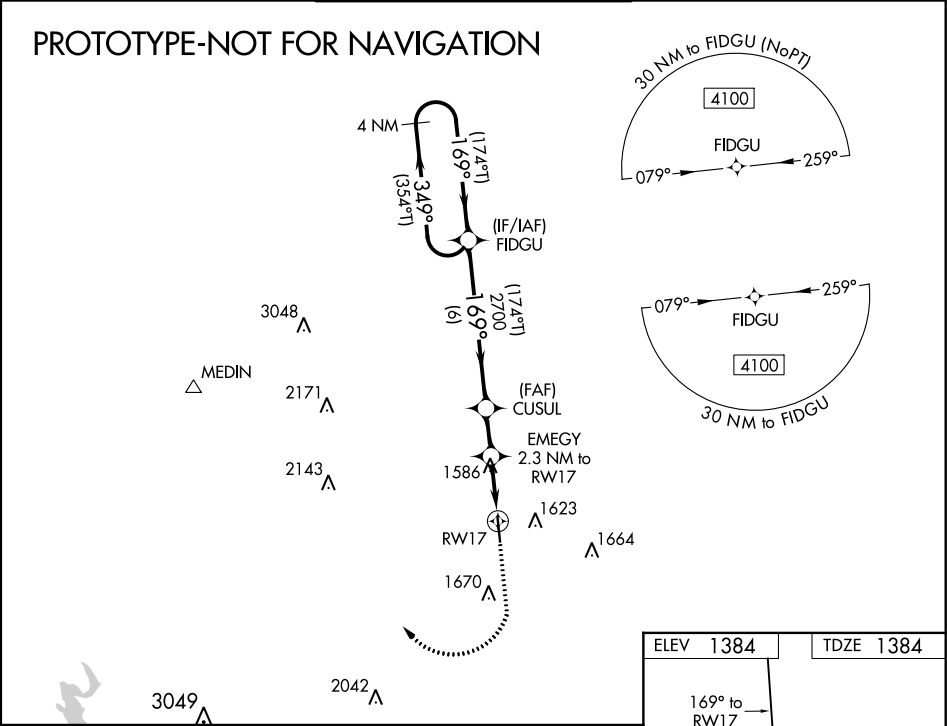
WAAS CH 50528 W17A	APP CRS 169°	Rwy Idg TDZE Apt Elev	4376 1384 1384
--	------------------------	-----------------------------	---

RNAV (GPS) RWY 17

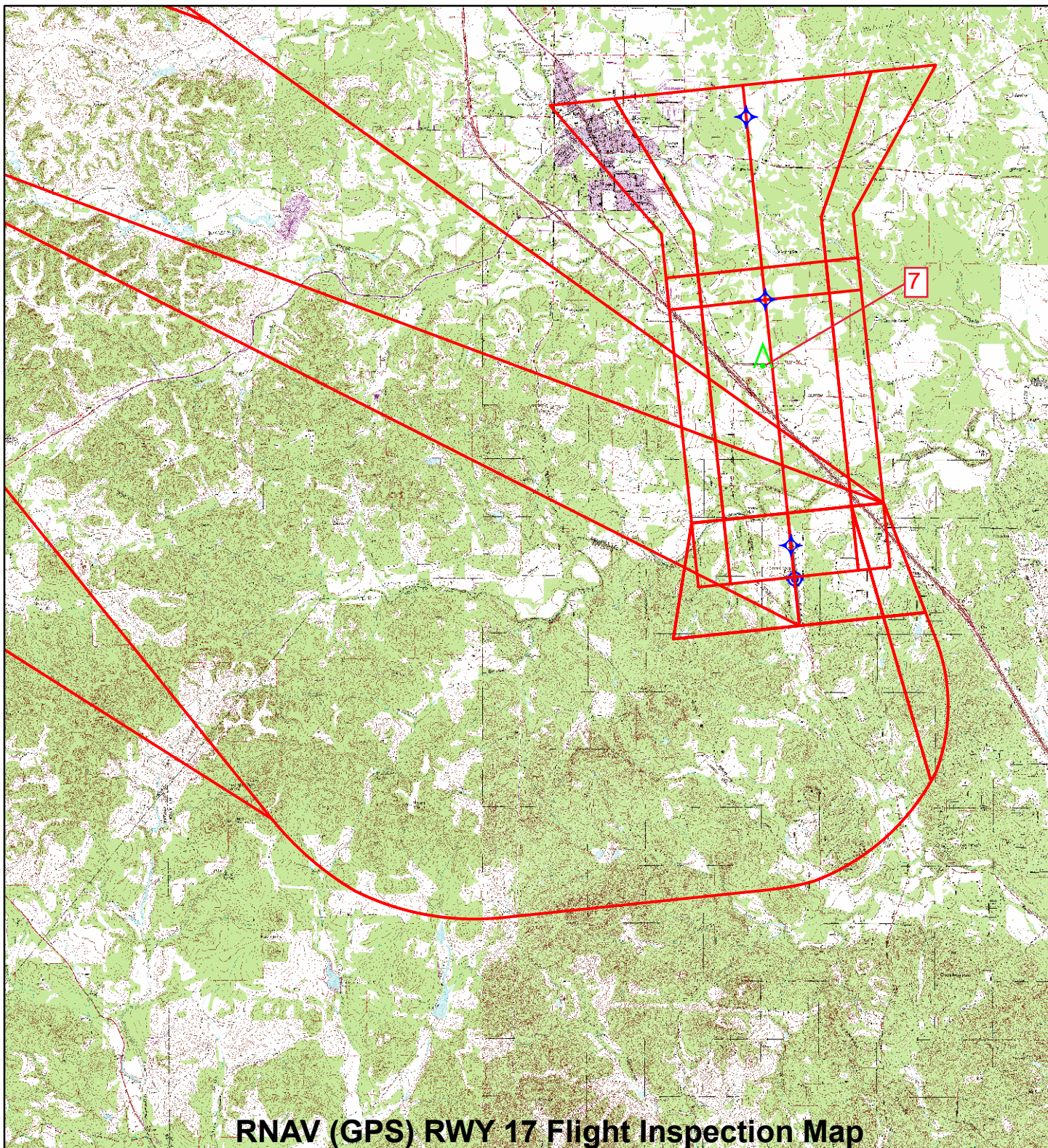
BOERNE STAGE FIELD (5C1)

RNP APCH	<div><div>▼</div><div>▲</div></div> <div>Circling NA east of Rwy 17-35. Rwy 17 helicopter visibility reduction below 1 SM NA. When local altimeter setting not received, use San Antonio Intl altimeter setting and increase all MDA 120 feet. Procedure NA at night.</div>	MISSED APPROACH: Climb to 1900 then dimbing right turn to 4100 direct MEDIN.
AWOS-3 118.725	SAN ANTONIO APP CON 125.1 307.0	UNICOM 123.0 (CTAF)

PROTOTYPE-NOT FOR NAVIGATION



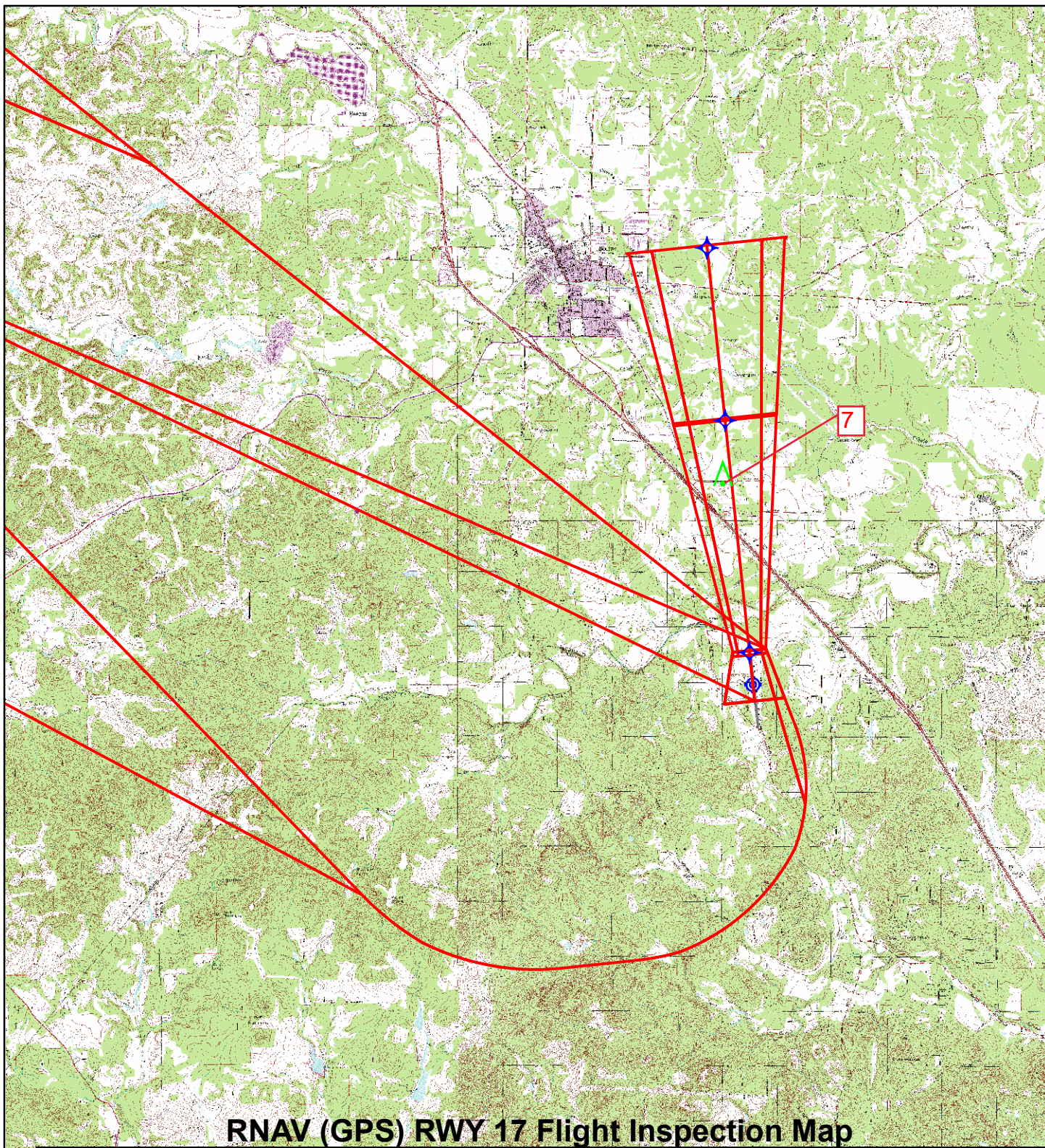
CATEGORY	A	B	C	D
LP MDA	1840-1	456 (500-1)	NA	
LNAV MDA	1840-1	456 (500-1)	NA	
CIRCLING	1960-1 576 (600-1)	2000-1 616 (700-1)	NA	



RNAV (GPS) RWY 17 Flight Inspection Map

PROC: RNAV (GPS) RWY 17, AMDT 1B
CITY/ST: SAN ANTONIO, TX
APT NAME: BOERNE STAGE FIELD
FINAL: LNAV
1:100,000

#7: FINAL: 1586 ANT (48-103185)



RNAV (GPS) RWY 17 Flight Inspection Map

PROC: RNAV (GPS) RWY 17, AMDT 1B
CITY/ST: SAN ANTONIO, TX
APT NAME: BOERNE STAGE FIELD
FINAL: LP
1:100,000

#7: FINAL: 1586 ANT (48-103185)