

Flight Procedure Tracking Form		Action: FLIGHT CHECK	Task Type: IAP	Date Open: 04/09/2018	Task #: 2018012310410401001	Request #: 20180123104104
Procedure: ILS OR LOC RWY 15 AMDT 2			Airport ID: KTBN	Airport: WAYNESVILLE-ST ROBERT RGNL FORNEY FLD		Reimbursable #: NO
City: FORT LEONARD WOOD	ST: MO	GPS #:	Estimated Chart Date: 08/15/2019		FICO #: 1225794	
Fac ID: TBN		Fac. Type: ILS			Specialist: LIAM DONAHUE	
Procedure Review						
	Rec'd	Rel'd	Full Name	Comments		
Lead:	12/06/2018	03/15/2019	DAVID SAUER	QUALITY Digitally signed by		
QA:	03/15/2019	03/18/2019	KISSY MAXFIELD	24 DAVID W SAUER		
Liaison:	03/18/2019	03/19/2019	MARY MCDONALD	CHECKED Apr 24, 2019		
Procedure Comments: ENROUTE-NON Remark Type: INFORMATION ASSIGNED MAG VAR, TBN: OLD 3E-NEW 0. TBN VOR: OLD 3E-NEW 0. TBN ILS: OLD 3E-NEW 0. CONTACT: DON LANIER, AJV- A431 MANAGER, 405.954-8242 04/22/19: THIS IS AN UPDATED COPY OF THE FORM DEVELOPED ON 12/20/2018. 1. CHANGED ROUTINE REQUIRED EFFECTIVE DATE FROM ROUTINE TO HARD DATE OF 8-15-19. 2. ADDED NOPT TERMINAL ROUTE FROM SHY VOR/DME TO PIMEW INT. 3. CHANGED FAC 1 MAG BRG FROM 324.17 TO 327.17 AND FAC 3 MAG BRG FROM 326.27 TO 329.27 ON THE URAYU 8260-2. 4. CHANGED FAC 1 MAG BRG FROM 324.17 TO 327.17 ON THE WOKVI 8260-2.						

LOC/DME I-TBN 110.9 Chan 46	APP CRS 147°	Rwy Idg TDZE Apt Elev	5537 1158 1160
---	------------------------	-----------------------------	---

ILS or LOC RWY 15

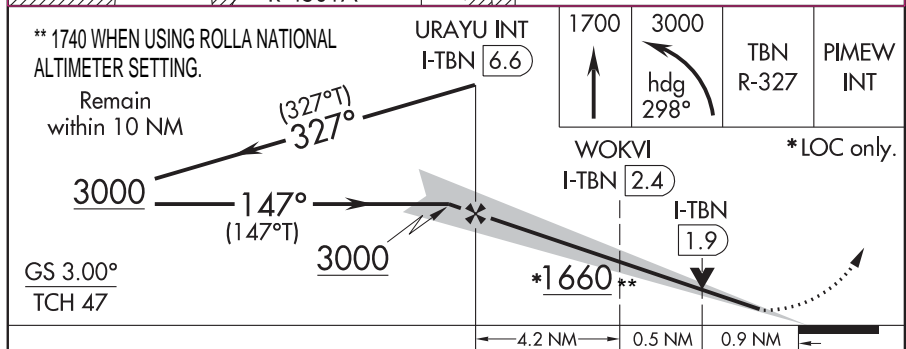
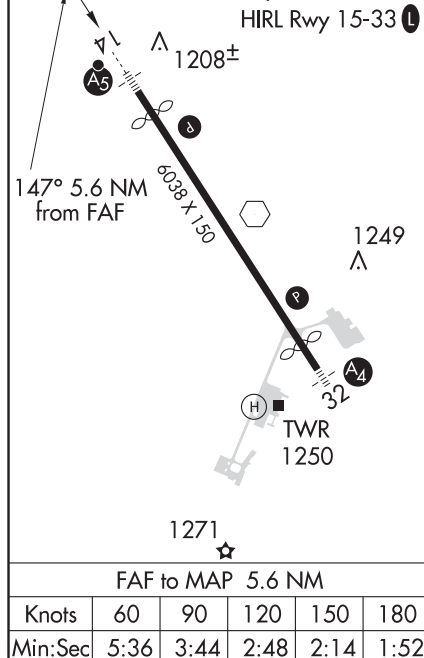
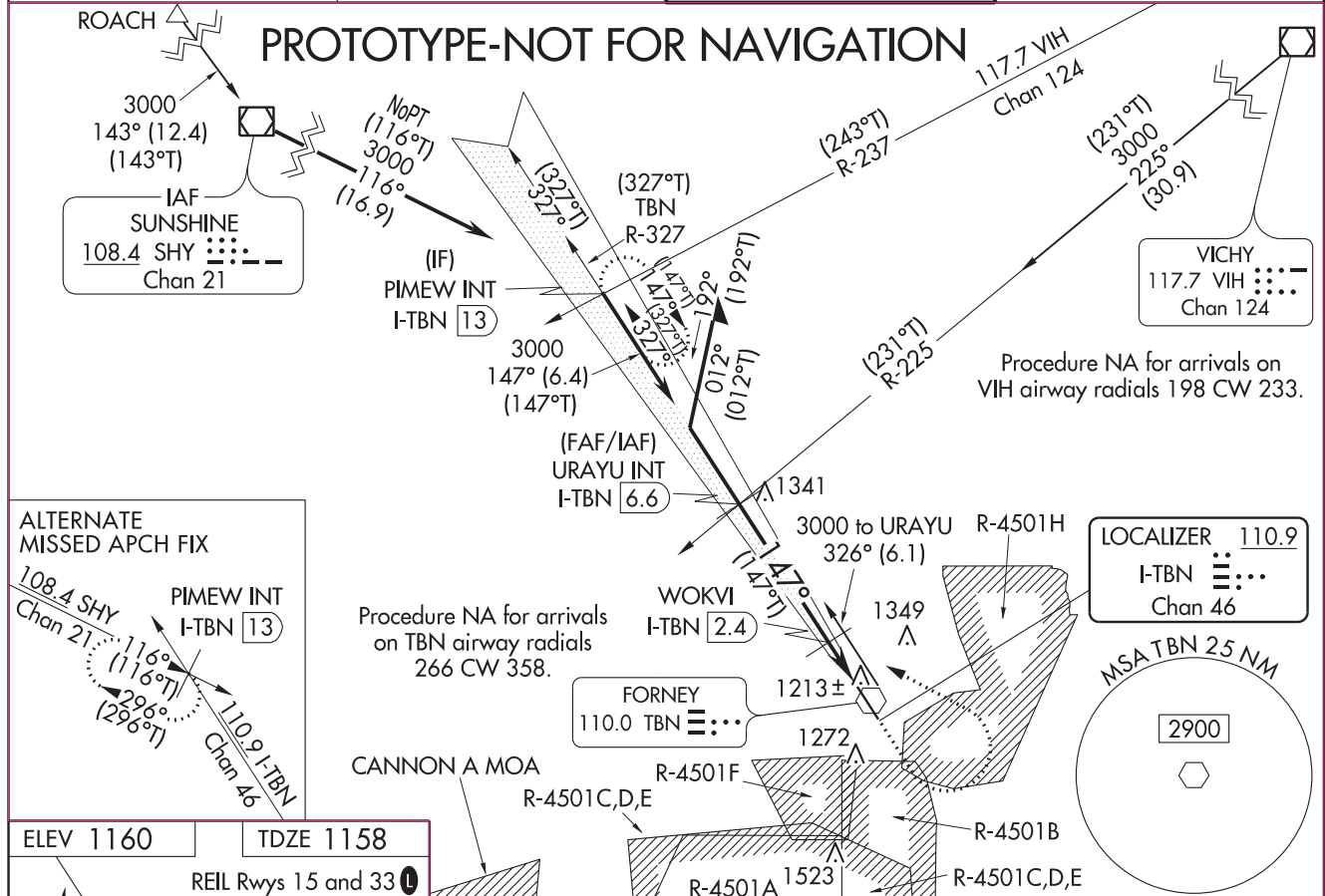
WAYNESVILLE-ST ROBERT RGNL FORNEY FIELD (TBN)

⚠ Circling NA west of Rwy 15-33. For inop ALS increase S-LOC 15 Cats C and D visibility to 1 $\frac{3}{8}$ SM. When local altimeter setting not received, use Rolla National altimeter setting and increase DA to 1427 feet; and all MDAs 80 feet, increase S-LOC 15 Cat C/D and Circling Cat C visibility $\frac{1}{4}$ SM and WOKVI fix minimums S-LOC 15 Cat C/D and Circling Cat C visibility $\frac{1}{4}$ SM. VDP NA when using Rolla National altimeter setting. For inop ALS when using Rolla National altimeter setting increase S-LOC 15 WOKVI fix minimums Cats C/D visibility to 1 $\frac{1}{4}$ SM. Inop table does not apply to S-ILS 15, S-LOC 15 Cat A/B, and WOKVI fix minimums S-LOC 15.



MISSED APPROACH: Climb to 1700 then climbing left turn to 3000 on heading 298 and TBN VOR R-327 to PIMEW INT/I-TBN 13 DME and hold.

D-ATIS 118.7 229.4	KANSAS CITY CENTER 128.35 284.675	FORNEY TOWER★ 125.4 (CTAF) 268.7	GND CON 123.75 256.8
------------------------------	---	--	--------------------------------



CATEGORY	A	B	C	D
S-ILS 15		1358-1	200 (200-1)	
S-LOC 15		1660-1	502 (600-1)	
CIRCLING	1660-1	500 (600-1)	1660-1 $\frac{1}{2}$ 500 (600-1 $\frac{1}{2}$)	1720-2 560 (600-2)
WOKVI FIX MINIMUMS				
S-LOC 15		1500-1	342 (400-1)	
CIRCLING	1580-1 420 (500-1)	1660-1 500 (600-1)	1660-1 $\frac{1}{2}$ 500 (600-1 $\frac{1}{2}$)	1720-2 560 (600-2)

OLD

FORT LEONARD WOOD, MISSOURI

AL-5093 (FAA)

18256

LOC/DME I-TBN	APP CRS	Rwy Idg	5537
110.9	144°	TDZE	1158
Chan 46		Apt Elev	1159

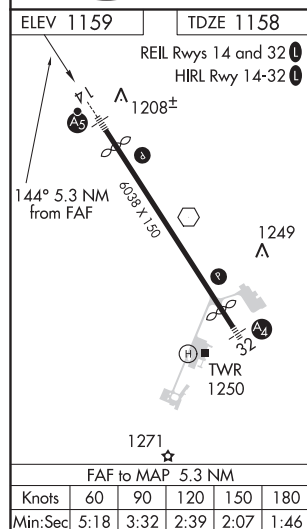
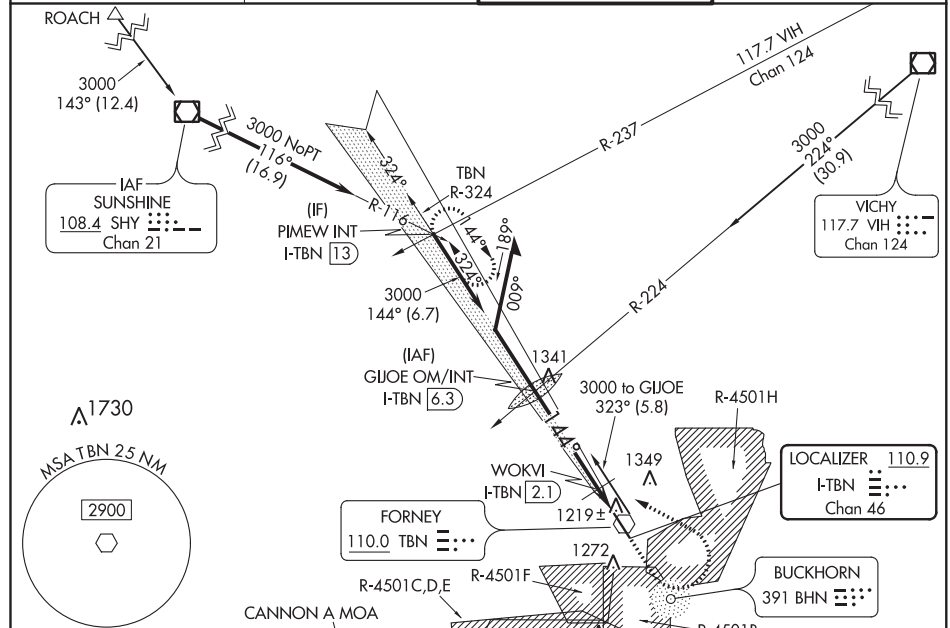
ILS or LOC RWY 14 WAYNESVILLE-ST ROBERT RGNL FORNEY FIELD (TBN)

When local altimeter setting not received, use Rolla/Vichy altimeter setting and increase all DA 69 feet; and all MDA 80 feet, increase S-LOC 14 Cat C/D visibility 1/4 mile and WOKVI fix minimums S-LOC 14 Cat C/D visibility 1/4 mile. For inop MALSR when using Rolla/Vichy altimeter setting increase S-ILS 14 all Cats visibility 3/8 mile. For inop MALSR increase S-LOC 14 Cats C and D visibility 3/8 mile.

MALSR

MISSED APPROACH: Climb to 1700 then climbing left turn to 3000 on heading 295° and on TBN VOR R-324 to PIMEW INT/13 DME and hold.

D-ATIS	KANSAS CITY CENTER	FORNEY TOWER *	GND CON
118.7 229.4	128.35 284.675	125.4 (CTAF) 268.7	123.75 256.8



FORT LEONARD WOOD, MISSOURI
Amdt 1A 29MAY14

WAYNESVILLE-ST ROBERT RGNL FORNEY FIELD (TBN)
37°44'N-92°08'W
ILS or LOC RWY 14

NC-3, 06 DEC 2018 to 03 JAN 2019

NC-3, 06 DEC 2018 to 03 JAN 2019

**FEDERAL AVIATION ADMINISTRATION
CATEGORICAL EXCLUSION DECLARATION**

Proposed Procedure Changes at Ft. Leonard Wood, (KTBN) Missouri

Description of Action:

The FAA is decommissioning the BUCKHORN (BHN) Non-Directional Beacon (NDB) and GIJOE Locator Outer Market (LOM) via the FAA Decommission/Discontinuance in the National Airspace System (NAS). The number of conventional navigational aids (NAVAIDs) would be reduced while more efficient Area Navigation (RNAV) routes and procedures are implemented throughout the NAS. Ft. Leonard Wood (TBN) requires a Magnetic Variation (MagVar) update to published procedures, as regulations mandate compliance within 5 degree tolerance. The FAA does not anticipate any changes to ground tracts or lowering of altitudes over noise sensitive areas with these changes.

This action proposes to amend the following procedures and associated editorial changes:

- **VOR Rwy 15** - All courses and headings change due to Ft. Leonard Wood (TBN) Very High Frequency Omni Directional Range (VOR) MagVar update; no altitude changes.
- **VOR Rwy 33** - All courses and headings change due to Ft. Leonard Wood (TBN) Very High Frequency Omni Directional Range (VOR) MagVar update; no altitude changes.
- **ILS Rwy 15** - All headings change due to Regulatory Mandate for Airport MagVar to be within 3 degree tolerance and to match the on-field TBN VOR; no altitude changes.
- **NDB Rwy 32** – cancel Instrument Flight Procedure (IFP) currently not being flown.
- **RNAV (GPS) Rwy 15** - Delete LAXKE and OSECA Initials, Remove LAXKE and OSECA Terminal Arrival Area (TAA) Base Legs and replace with the I design TAAs (two halves, one Procedure Turn (PT) Required, one No PT)
- **RNAV (GPS) Rwy 33** - Delete COVMO and ZIMLI Initials, Remove COVMO and ZIMLI TAA Base Legs and replace with the I design TAAs (two halves, on PT Required, one No PT)
- **Takeoff Minimums and (Obstacle) Departure Procedures** – RWY 15 - All headings change in publication due to MagVar Regulatory Mandate for Airport MagVar to be within 3 degree tolerance and to match the on-field VOR; no altitude changes.

Declaration of Exclusion:

The FAA has reviewed the above referenced proposed action and it has been determined, by the undersigned, to be categorically excluded from further environmental documentation according to FAA Order 1050.1F, “Environmental Impacts: Policies and Procedures.” The modification of the airspace requires no further environmental review, as the modifications meet the *de minimis*

requirements as described per FAAO 1050.1F. Essentially, under current conditions there would be no environmental impact by publishing this airspace change. The implementation of this action will not result in any extraordinary circumstances in accordance with FAA Order 1050.1F.

Basis for this Determination:

This review was conducted in accordance with policies and procedures in Department of Transportation Order 5610.1C, "Procedures for Considering Environmental Impacts" and FAA Order 1050.1F. The proposed actions meet the following categorical exclusions contained in FAA Order 1050.1F:

5- 6.5.k: Publication of existing air traffic control procedures that do not essentially change existing tracks; create new tracks, change altitude, or change concentration of aircraft on these tracks. (ATO, AVS)

Concurrence:

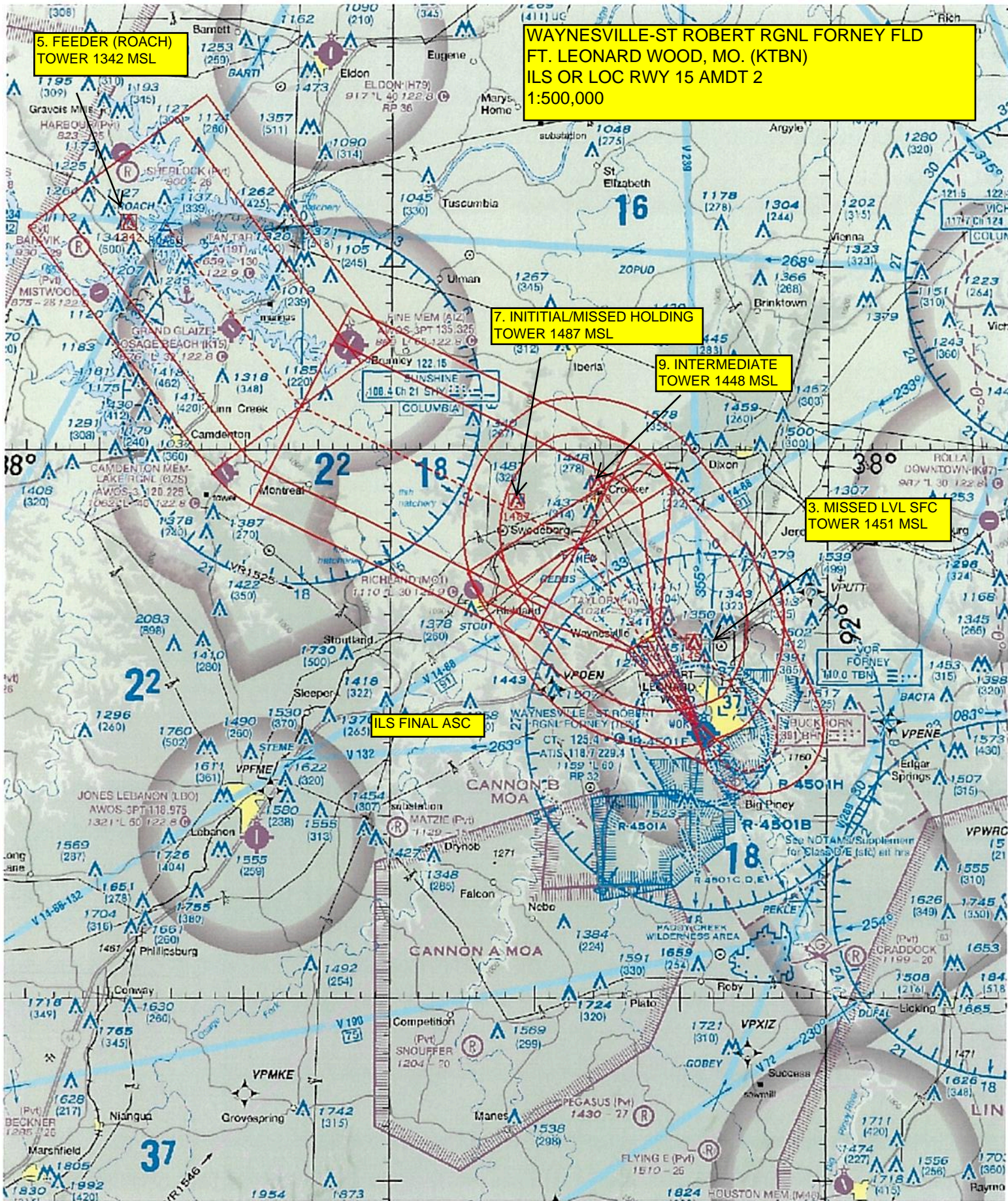
Signature: Jennifer Denise Sheetz Digitally signed by Jennifer Denise Sheetz
Date: 2018.11.28 11:56:24 -06'00'

Title: Jennifer Sheetz, Environmental Specialist

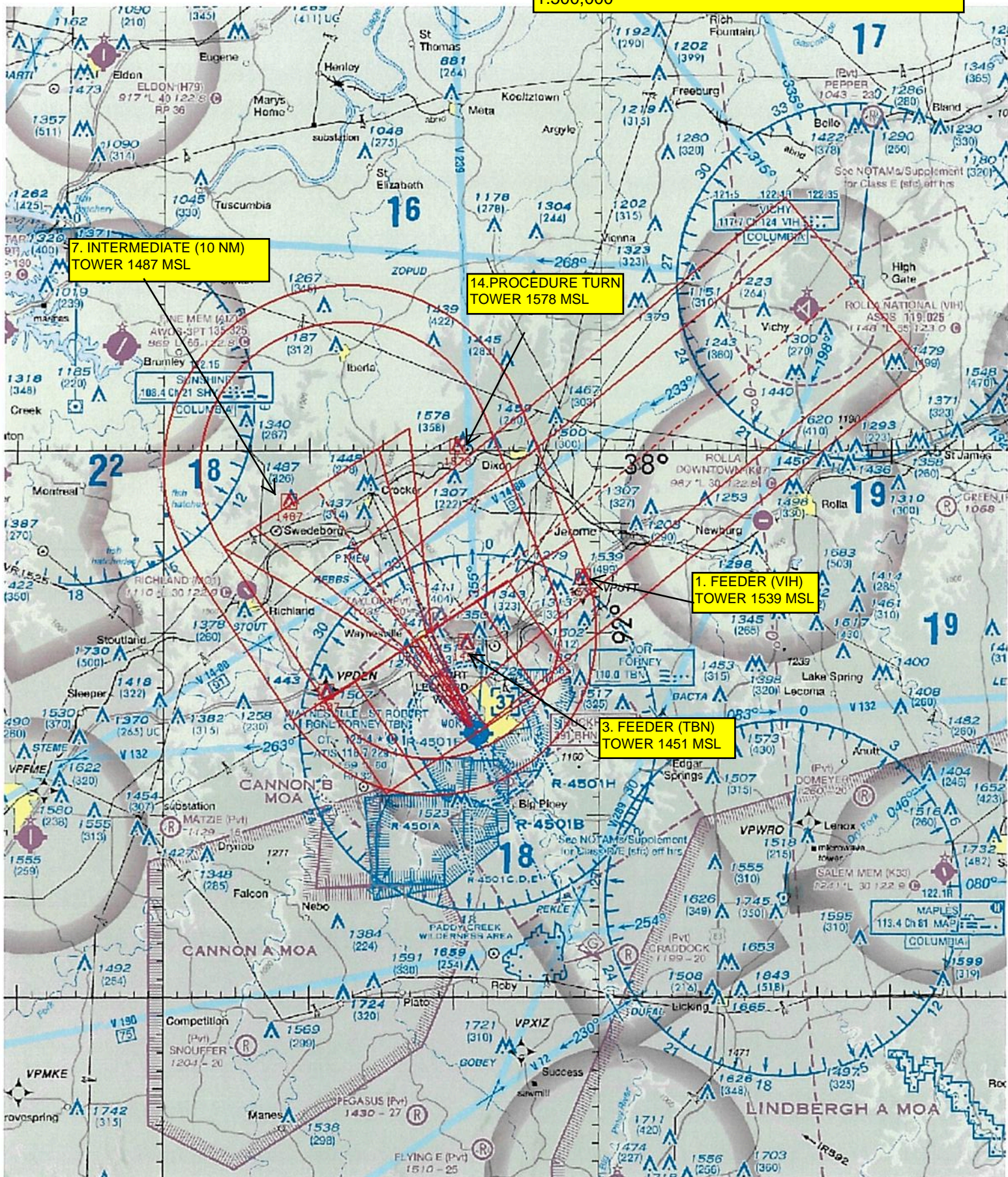
Approved By:

Signature: WAYNE L ECKENRODE Digitally signed by WAYNE L ECKENRODE
Date: 2018.12.07 08:34:07 -06'00'

Title: Anthony Schneider,
Manager, Operations Support Group, ATO Central Service Center



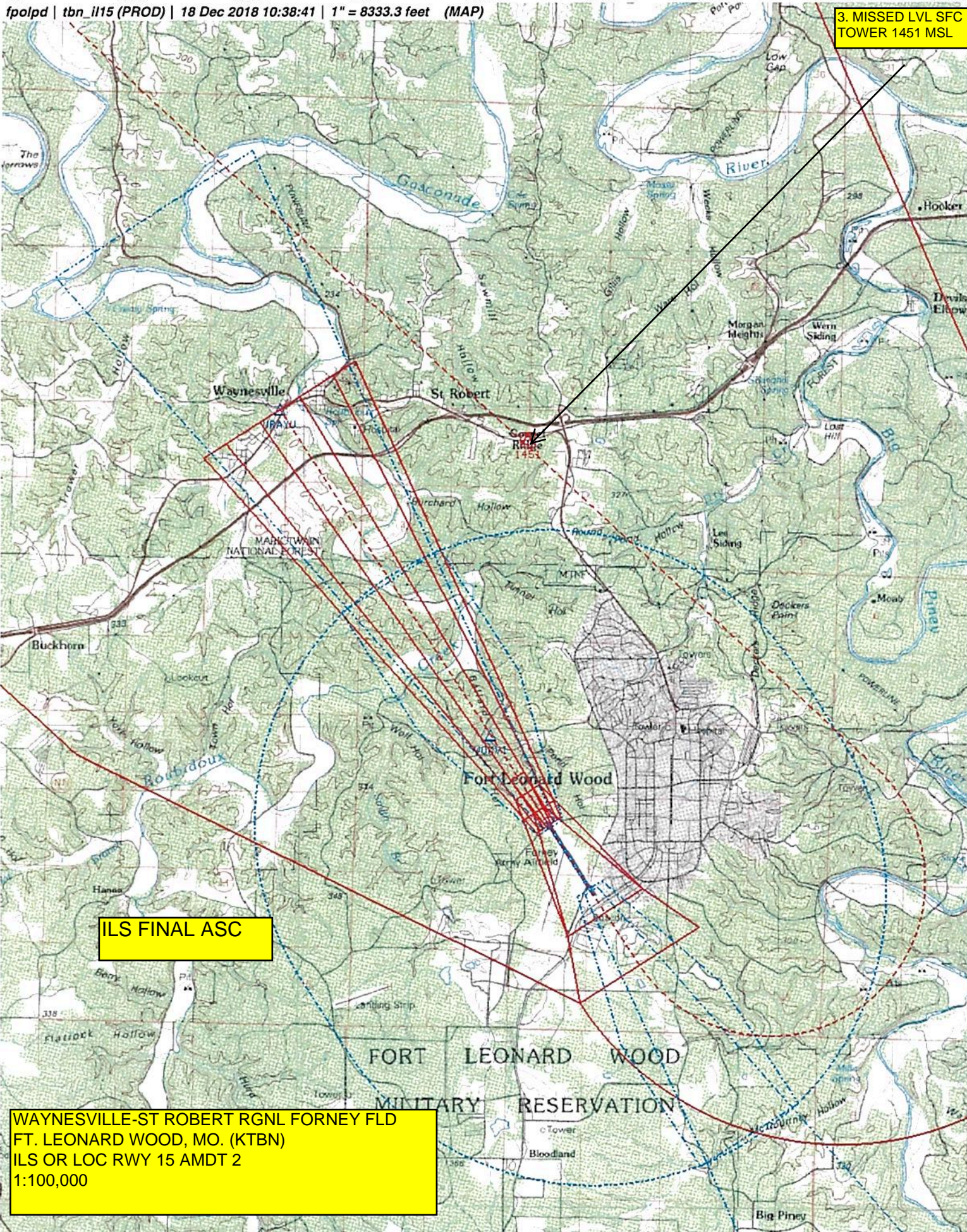
WAYNESVILLE-ST ROBERT RGNL FORNEY FLD
FT. LEONARD WOOD, MO. (KTBN)
ILS OR LOC RWY 15 AMDT 2
1:500,000



NM 1 2 3 4 5 6 7 8 9 10
FT 8000 16000 24000 32000 40000 48000 56000 64000

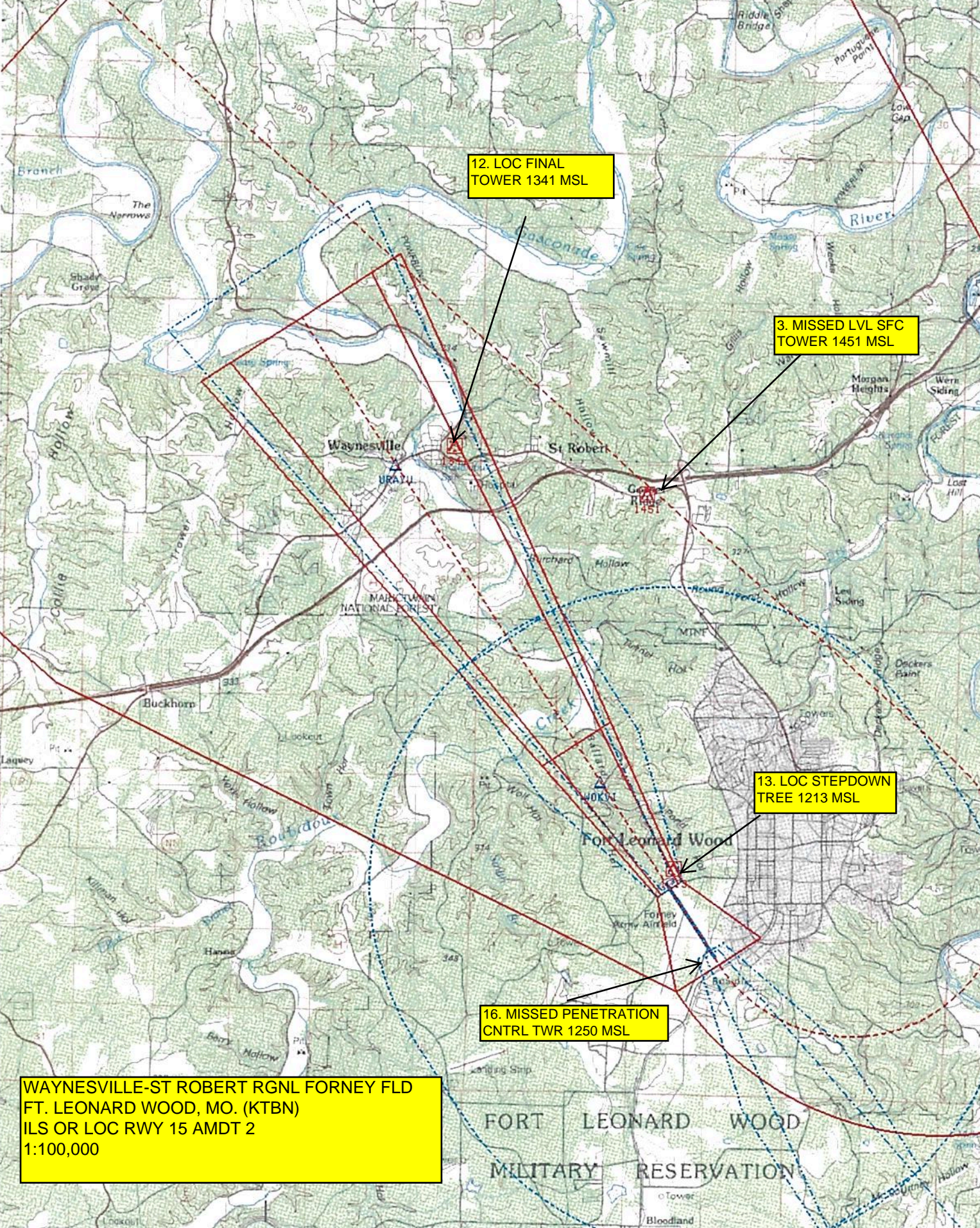
fpolpd | tbn_il15 (PROD) | 18 Dec 2018 10:38:41 | 1" = 8333.3 feet (MAP)

3. MISSED LVL SFC
TOWER 1451 MSL



ILS FINAL ASC

WAYNESVILLE-ST ROBERT RGNL FORNEY FLD
FT. LEONARD WOOD, MO. (KTBN)
ILS OR LOC RWY 15 AMDT 2
1:100,000

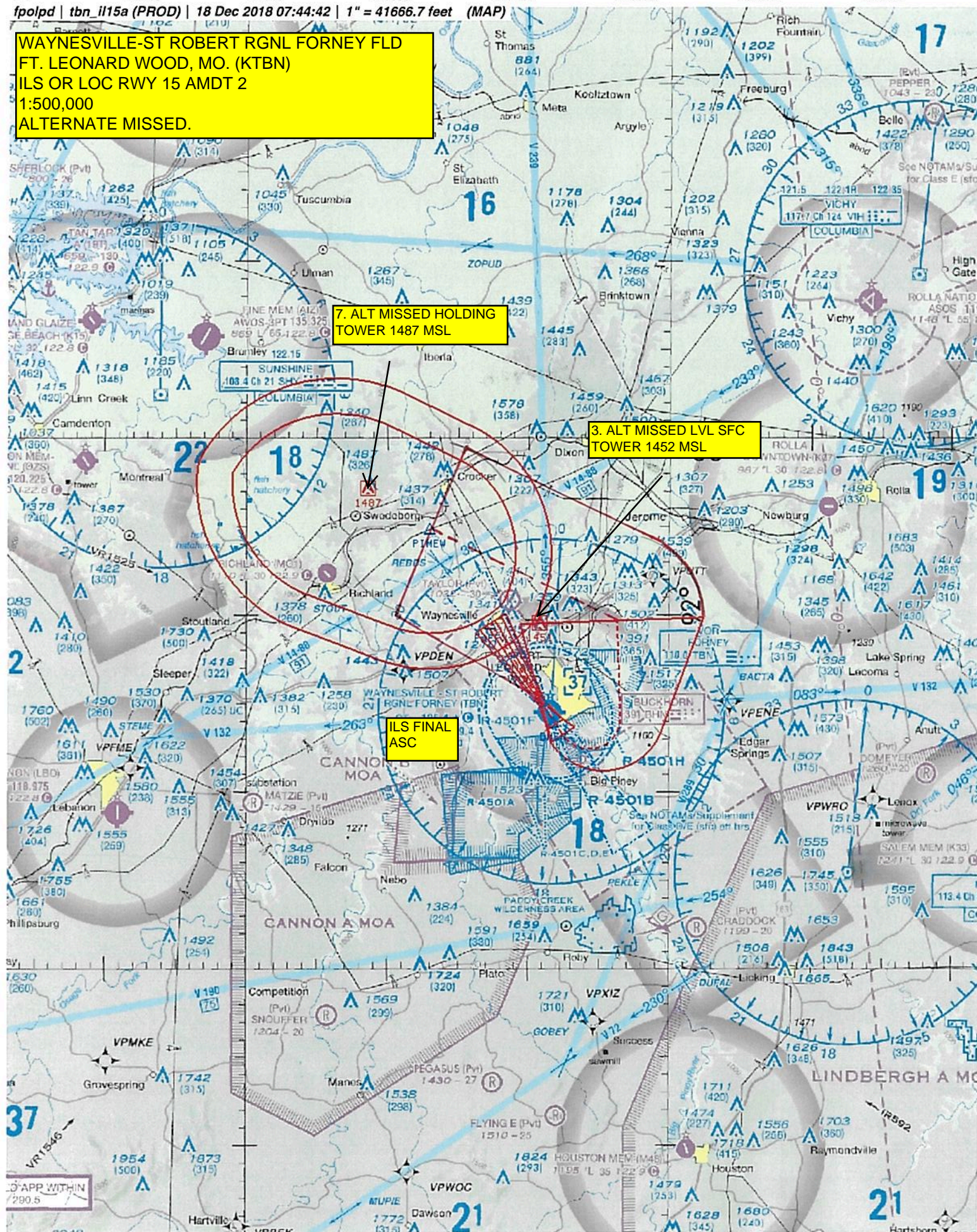


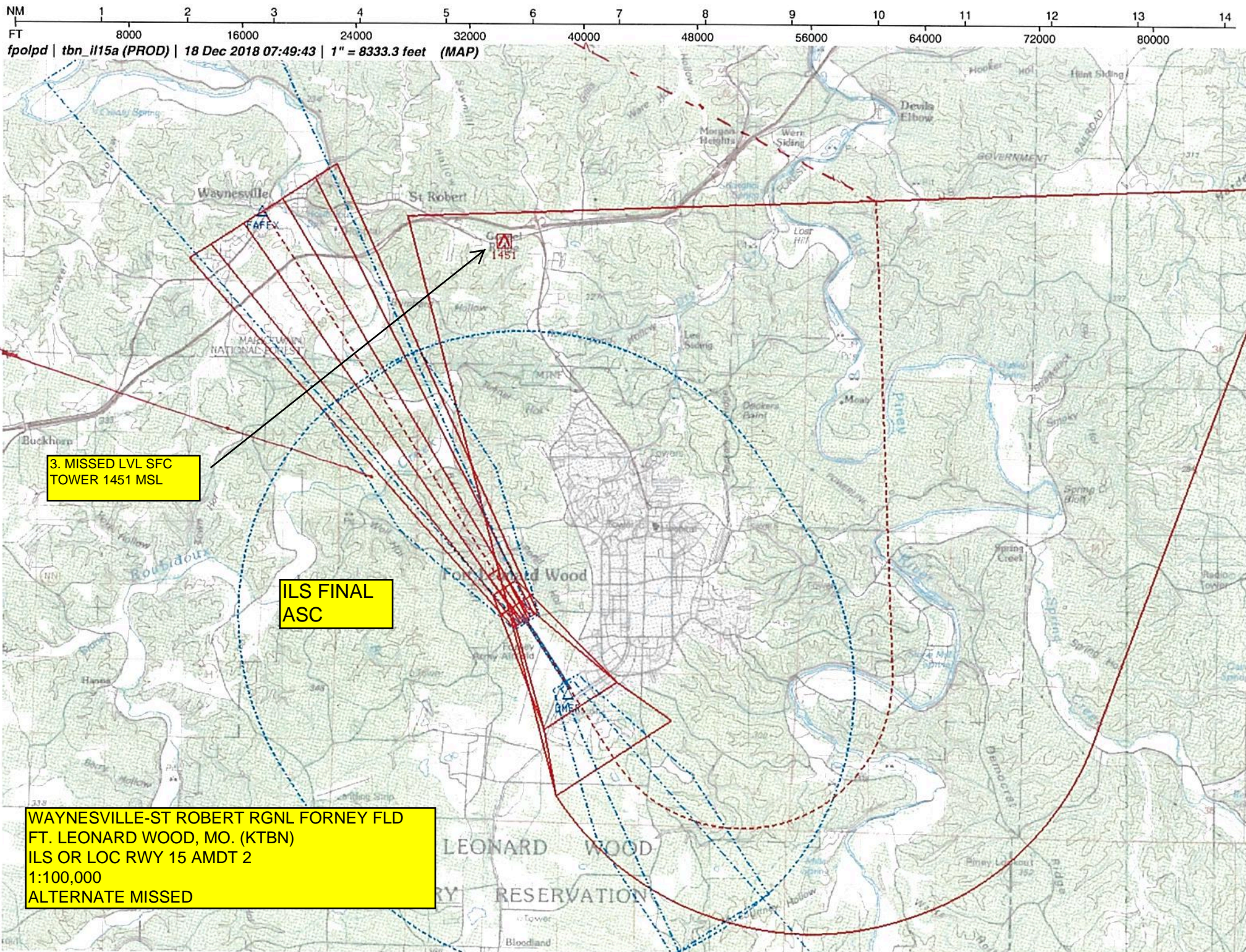
WAYNESVILLE-ST ROBERT RGNL FORNEY FLD
FT. LEONARD WOOD, MO. (KTBN)
ILS OR LOC RWY 15 AMDT 2
1:500,000
ALTERNATE MISSED.

7. ALT MISSED HOLDING
TOWER 1487 MSL

3. ALT MISSED LVL SFC
TOWER 1452 MSL

ILS FINAL
ASC





3. MISSED LVL SFC
TOWER 1451 MSL

ILS FINAL
ASC

WAYNESVILLE-ST ROBERT RGNL FORNEY FLD
FT. LEONARD WOOD, MO. (KTBN)
ILS OR LOC RWY 15 AMDT 2
1:100,000
ALTERNATE MISSED

WAYNESVILLE-ST ROBERT RGNL FORNEY FLD
FT. LEONARD WOOD, MO. (KTBN)
ILS OR LOC RWY 15 AMDT 2
1:100,000
ALTERNATE MISSED.

