


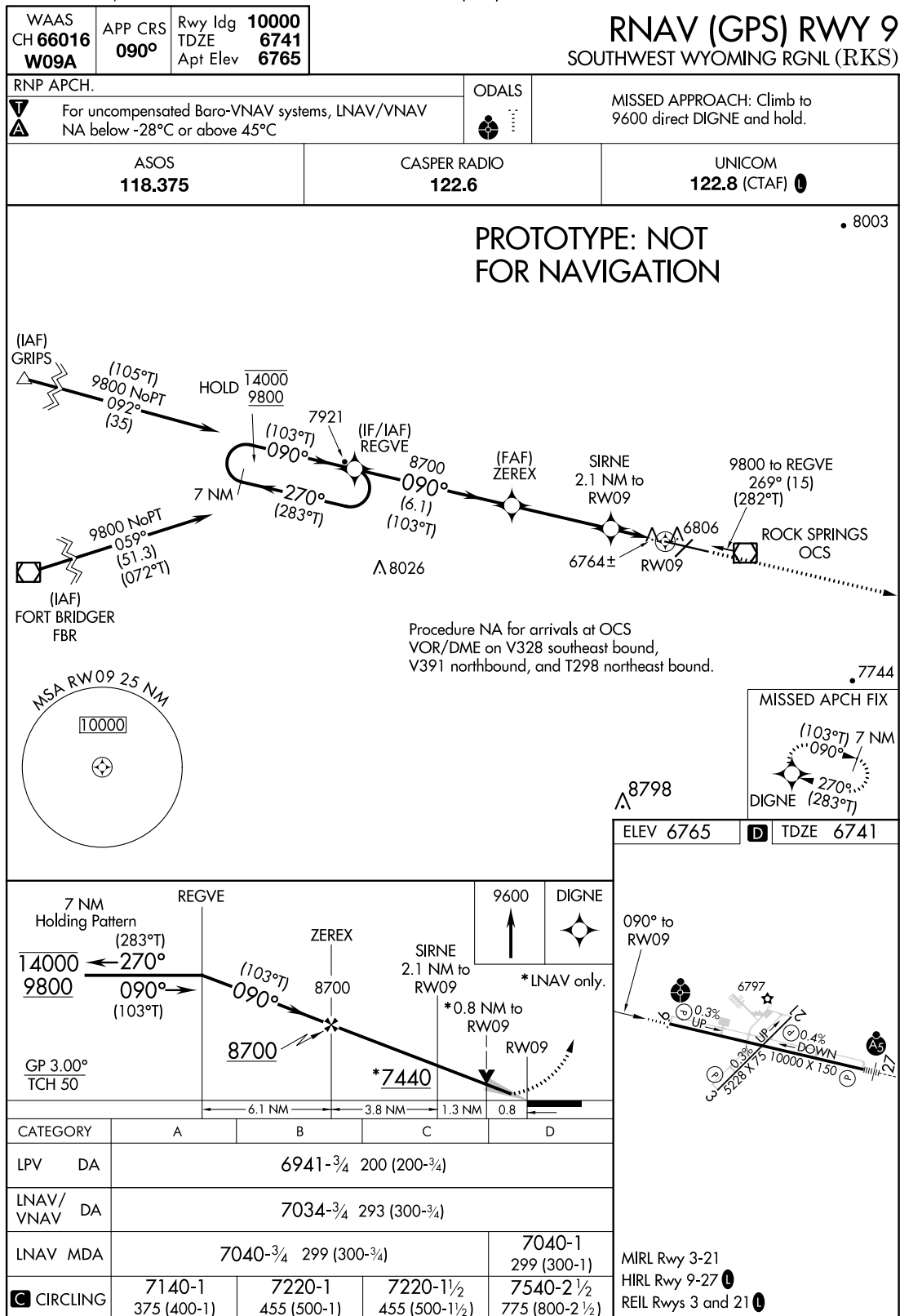
<b>Flight Procedure Tracking Form</b>		<b>Action:</b> AMENDMENT	<b>Task Type:</b> IAP	<b>Date Open:</b> 01/17/2018	<b>Task #:</b> 2018011727615101002	<b>Request #:</b> 20180117276151
<b>Procedure:</b> APPROACH RNAV (GPS) RWY 9 ORIG-B			<b>Airport ID:</b> KRKS	<b>Airport:</b> SOUTHWEST WYOMING RGNL		<b>Reimbursable #:</b> NO
<b>City:</b> ROCK SPRINGS	<b>ST:</b> WY	<b>GPS #:</b>	<b>Estimated Chart Date:</b> 11/08/2018		<b>FICO #:</b>	
<b>Fac ID:</b> N/A		<b>Fac. Type:</b>			<b>Specialist:</b> DAVID DOWLING	
<b>Procedure Review</b>						
	<b>Rec'd</b>	<b>Rel'd</b>	<b>Full Name</b>	<b>Comments</b>		
<b>Lead:</b>	01/18/2018			 B. BICKETT 8/15/2018		
<b>QA:</b>						
<b>Liaison:</b>						
<b>Procedure Comments:</b> ENROUTE-NON <b>Remark Type:</b> INFORMATION  FLIGHT INSPECTION REVIEW NOT REQUIRED - PROCESSED IAW AIRCRAFT OPERATIONS GROUP (AJW-33) MEMO, DEC 22, 2017.  CLEARS !RKS 02/001.  MANAGER CONTACTS: ROBERT HAMILTON, AJV-5422, (405) 954-4608; JULIE MORGAN, AJV-542, (405) 954-8568.						

NEW

ROCK SPRINGS, WYOMING

AL-353 (FAA)

FIG



AUTOMATED AL-353 RNAV (GPS) RWY 9

NW-1  
14 AUG 2018  
COMPILER: CG  
REVIEWER:  
DBL CHKR:  
EFF: FIG

ROCK SPRINGS, WYOMING

Orig-B FIG

41°36'N-109°04'W

SOUTHWEST WYOMING RGNL (RKS)

RNAV (GPS) RWY 9

WAAS  
CH **66016**  
**W09A**

APP CRS  
**090°**

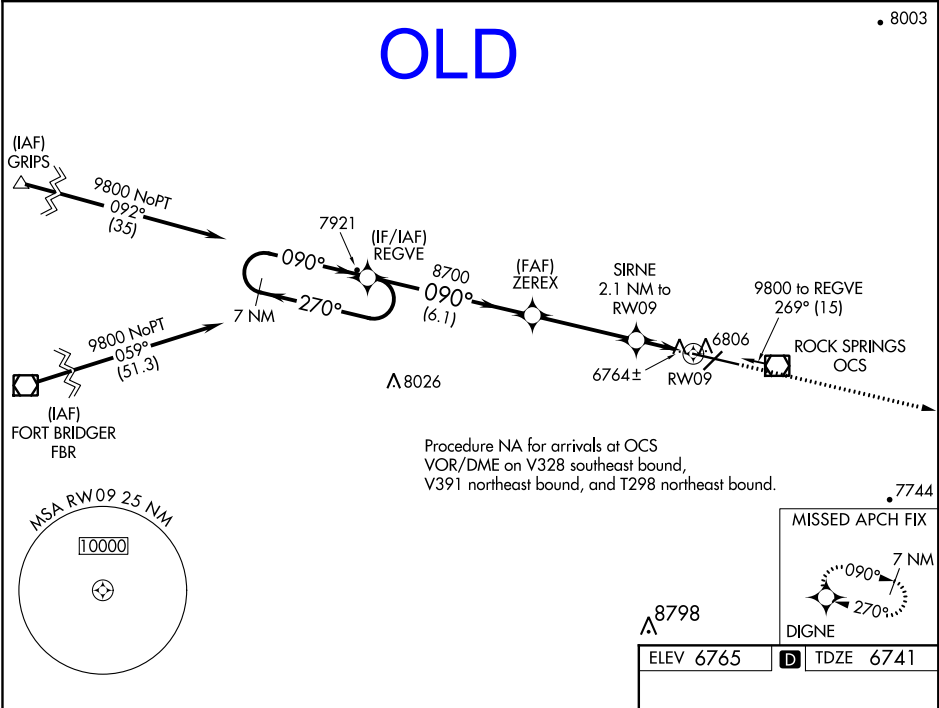
Rwy Idg **10000**  
TDZE **6741**  
Apt Elev **6765**

For uncompensated Baro-VNAV systems, LNAV/VNAV  
NA below -28°C (-18°F) or above 35°C (95°F).  
DME/DME RNP-0.3 NA.

ODALS

MISSED APPROACH: Climb to  
9600 direct DIGNE and hold.

ASOS <b>118.375</b>	CASPER RADIO <b>122.6</b>	UNICOM <b>122.8</b> (CTAF) <b>0</b>
------------------------	------------------------------	--



7 NM Holding Pattern		REGVE		9600 DIGNE	
9800 ← 270°		→ 090°		090° to RW09	
GP 3.00° TCH 50		8700		*LNAV only.	
		ZEREX 8700		SIRNE 2.1 NM to RW09	
		*7440		*0.8 NM to RW09	
		6.1 NM		3.8 NM	
				1.3 NM	
				0.8	
CATEGORY	A	B	C	D	
LPV DA	6941-¾ 200 (200-¾)				
LNAV/VNAV DA	7034-¾ 293 (300-¾)			7034-1 293 (300-1)	
LNAV MDA	7040-¾ 299 (300-¾)			7040-1 299 (300-1)	
CIRCLING	7140-1 375 (400-1)	7220-1 455 (500-1)	7220-1½ 455 (500-1½)	7540-2½ 775 (800-2½)	

REIL Rwy 3 and 21

MIRL Rwy 3-21

HIRL Rwy 9-27