




Flight Procedure Tracking Form		Action: AMENDMENT	Task Type: IAP	Date Open: 04/19/2018	Task #: 2018010930436315002	Request #: 20180109304363
Procedure: RNAV (GPS) Y RWY 34C AMDT 2D			Airport ID: KSEA	Airport: SEATTLE-TACOMA INTL		Reimbursable #: NO
City: SEATTLE	ST: WA	GPS #:	Estimated Chart Date: 07/19/2018		FICO #:	
Fac ID: N/A		Fac. Type:			Specialist: RUSSELL ROSLEWSKI	
Procedure Review						
	Rec'd	Rel'd	Full Name	Comments		
Lead:	04/19/2018			 Digitally signed by		
QA:				 DAVID W SAUER		
Liaison:				 Apr 25, 2018		
Procedure Comments: ENROUTE-NON Remark Type: INFORMATION P-NOTAM FLIGHT INSPECTION REVIEW NOT REQUIRED - PROCESSED IAW AIRCRAFT OPERATIONS GROUP (AJW-333) MEMO, DEC 22, 2017. DEZ SILAGYI, 405-954-5340						

WAAS CH 77710 W34B	APP CRS 344°	Rwy Idg 9426 TDZE 387 Apt Elev 433
--	------------------------	---

RNAV (GPS) Y RWY 34C
SEATTLE-TACOMA INTL (SEA)

T DME/DME RNP-0.3 NA. Simultaneous approach authorized with Rwy 34L. LNAV procedure NA during simultaneous operations. Use of FD or AP providing RNAV track guidance required during simultaneous operations. For uncompensated Baro-VNAV systems, LNAV/VNAV NA below -6°C (22°F) or above 54°C (130°F).

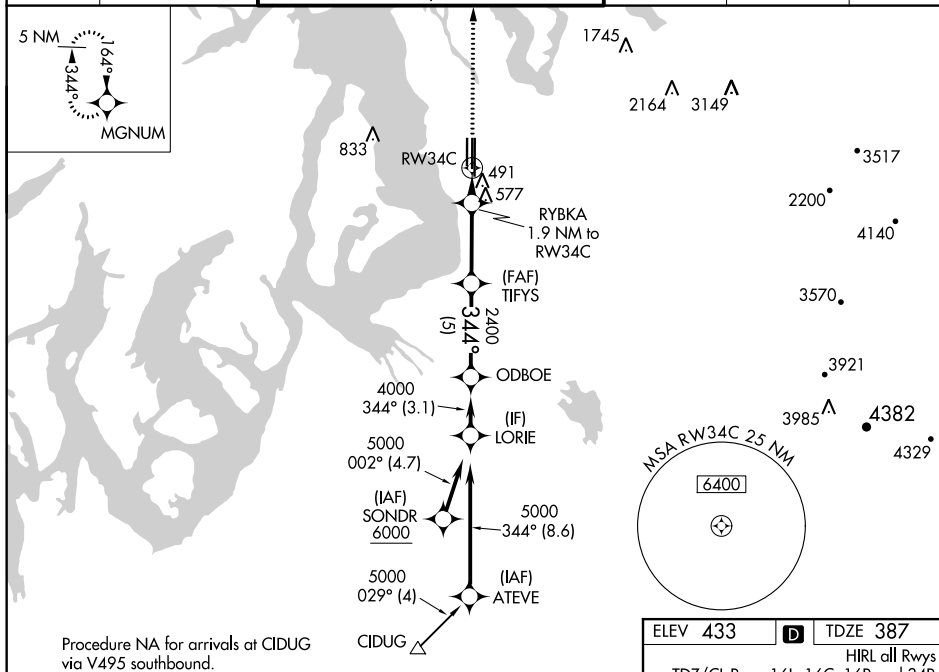
RVR 1800 authorized with use of FD or AP or HUD to DA.

MALSR

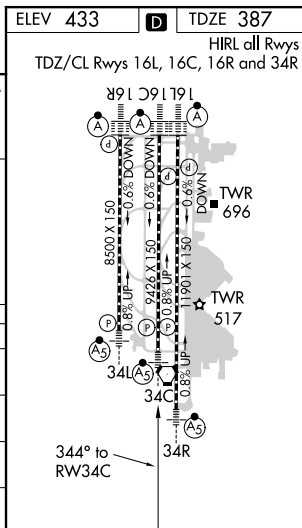
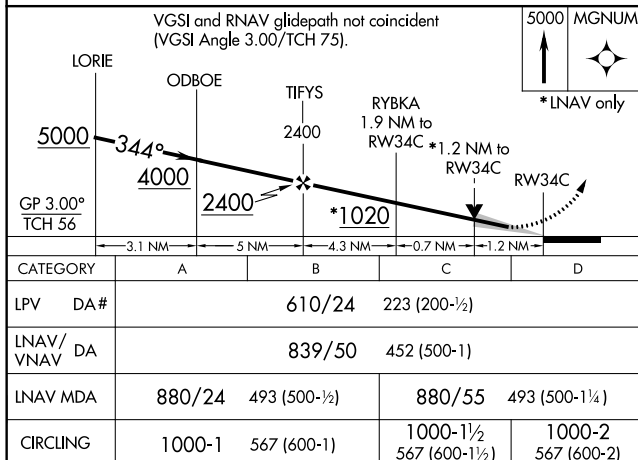


MISSED APPROACH:
Climb to 5000 direct
MGNUM and hold, continue
climb-in-hold to 5000.

D-ATIS 118.0	SEATTLE APP CON 133.65 273.45	SEATTLE TOWER 119.9 239.3 (Rwys 16L, 16C, 34C, 34R) 120.95 239.3 (Rwys 16R, 34L)	GND CON 121.7	CLNC DEL 128.0	CPDLC
------------------------	---	--	-------------------------	--------------------------	-------



NW-1, 29 MAR 2018 to 26 APR 2018



SEATTLE, WASHINGTON

Amdt 2C 12OCT17

SEATTLE-TACOMA INTL (SEA)

47°27'N-122°19'W

RNAV (GPS) Y RWY 34C