




Flight Procedure Tracking Form		Action: AMENDMENT	Task Type: IAP	Date Open: 04/19/2018	Task #: 2018010930436315001	Request #: 20180109304363
Procedure: RNAV (GPS) Y RWY 16L AMDT 5B			Airport ID: KSEA	Airport: SEATTLE-TACOMA INTL		Reimbursable #: NO
City: SEATTLE	ST: WA	GPS #:	Estimated Chart Date: 07/19/2018		FICO #:	
Fac ID: N/A		Fac. Type:			Specialist: RUSSELL ROSLEWSKI	
Procedure Review						
	Rec'd	Rel'd	Full Name	Comments		
Lead:	04/19/2018			 Digitally signed by		
QA:				 DAVID W SAUER		
Liaison:				 Apr 25, 2018		
Procedure Comments: ENROUTE-NON Remark Type: INFORMATION P-NOTAM FLIGHT INSPECTION REVIEW NOT REQUIRED - PROCESSED IAW AIRCRAFT OPERATIONS GROUP (AJW-333) MEMO, DEC 22, 2017. DEZ SILAGYI, 405-954-5340						

SEATTLE, WASHINGTON

L 7 (FAA)

17285

OLD

WAAS CH 63202 W16A	APP CRS 164°	Rwy Idg 11901 TDZE 433 Apt Elev 433
----------------------------------------	------------------------	----------------------------------------------------------------

RNAV (GPS) Y RWY 16L

SEATTLE-TACOMA INTL (SEA)

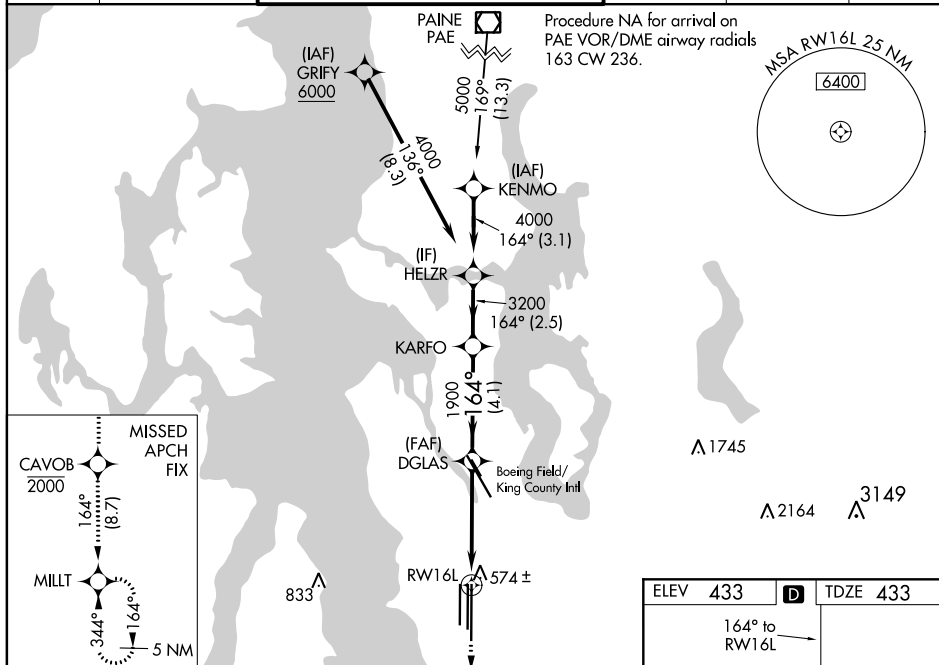
▼ For uncompensated Baro-VNAV systems, LNAV/VNAV NA below -6°C (22°F) or above 54°C (130°F). Simultaneous approach authorized with Rwy 16R. DME/DME RNP-0.3 NA. Use of FD or AP providing RNAV track guidance required during simultaneous operations. LNAV procedure NA during simultaneous operations. For inoperative ALS, increase LPV all Cts visibility to RVR 4500, and increase LNAV Cts C/D visibility to RVR 6000.
RVR 1800 authorized with use of FD or AP or HUD to DA.

ALSF-2

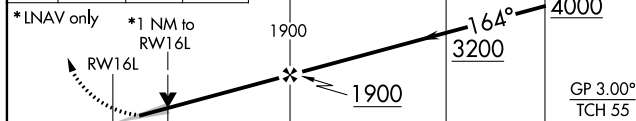


MISSED APPROACH: Climb direct CAVOB to cross CAVOB at or below 2000 then climb to 5000 on track 164° to MILT and hold, continue climb-in-hold to 5000.

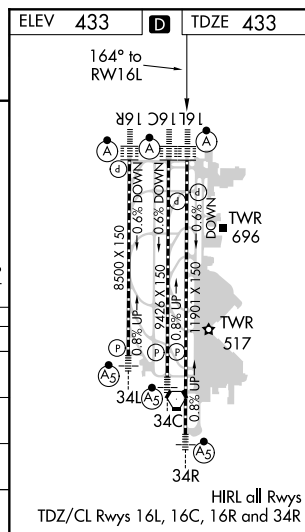
D-ATIS 118.0	SEATTLE APP CON 133.65 273.45	SEATTLE TOWER 119.9 239.3 (Rwys 16L, 16C, 34C, 34R) 120.95 239.3 (Rwys 16R, 34L)	GND CON 121.7	CLNC DEL 128.0	CPDLC
------------------------	-----------------------------------------	------------------------------------------------------------------------------------------------------	-------------------------	--------------------------	-------



CAVOB 2000	5000	MILT	VGSI and RNAV glidepath not coincident (VGSI Angle 3.00/TCH 79).
164°	tr 164°		DGLAS KARFO HELZR



CATEGORY	A	B	C	D
LPV DA#		700/24	267 (300-½)	
LNAV/ VNAV DA		766/32	333 (400-¾)	
LNAV MDA	840/24	407 (500-½)	840/40	407 (500-¾)
CIRCLING	1000-1	567 (600-1)	1000-1½ 567 (600-½)	1000-2 567 (600-2)



SEATTLE, WASHINGTON

Amdt 5A 12OCT17

47°27'N-122°19'W

SEATTLE-TACOMA INTL (SEA)

RNAV (GPS) Y RWY 16L

NW-1, 29 MAR 2018 to 26 APR 2018

NW-1, 29 MAR 2018 to 26 APR 2018