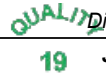



| | | | | | | |
|---|---------------|-----------------------------|---|--|---------------------------------------|-------------------------------------|
| Flight Procedure Tracking Form | | Action: AMENDMENT | Task Type: IAP | Date Open: 01/04/2018 | Task #: 2018010436396101001 | Request #: 20180104363961 |
| Procedure: RNAV (GPS) RWY 21 AMDT 1A | | | Airport ID: KSMO | Airport: SANTA MONICA MUNI | | Reimbursable #: NO |
| City: SANTA MONICA | ST: CA | GPS #: | Estimated Chart Date: 05/24/2018 | | FICO #: | |
| Fac ID: N/A | | Fac. Type: | | Specialist: KEVIN KESZLER | | |
| Procedure Review | | | | | | |
| | Rec'd | Rel'd | Full Name | Comments | | |
| Lead: | 01/04/2018 | | |  Digitally signed by JON DENTON | | |
| QA: | | | |  Jan 19, 2018 | | |
| Liaison: | | | | | | |
| Procedure Comments: | | | ENROUTE-NON Remark Type: INFORMATION | | | |
| FLIGHT INSPECTION REVIEW NOT REQUIRED - PROCESSED IAW AIRCRAFT OPERATIONS GROUP (AJW-333) MEMO, DEC 22, 2017. CONTACT LEAD DEZ SILAGYI AT 1-405-954-5340 | | | | | | |

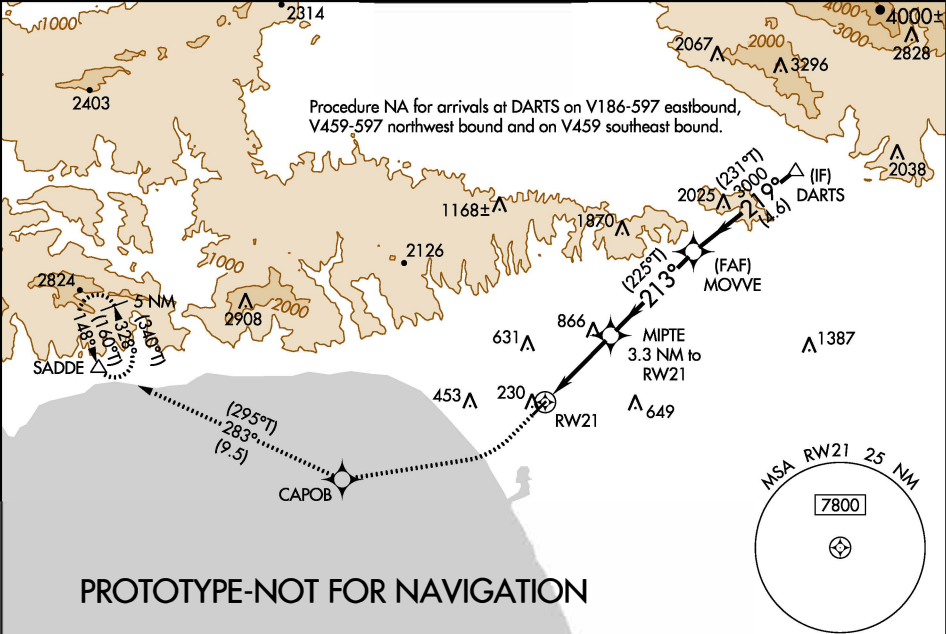
Data as of: 01/05/2018 11:22:56 AM

| | | |
|--|------------------------|--|
| WAAS CH 90339 W21A | APP CRS 213° | Rwy ldg TDZE Apt Elev 3500 170 170 |
|--|------------------------|--|

RNAV (GPS) RWY 21
SANTA MONICA MUNI (SMO)

| | |
|--|--|
| RNP: For uncompensated Baro-VNAV systems, LNAV/VNAV NA below 5°C (41°F) or above 14°C (58°F). Rwy 21 helicopter visibility reduction below 1 SM NA. | MISSED APPROACH: Climb to 600 then climbing right turn to 5000 direct CAPOB and on track 283° to SADDE and hold, continue climb-in-hold to 5000. |
|--|--|

| | | | | |
|-----------------------|---------------------------------------|--|-------------------------|-------------------------|
| ATIS 119.15 | SOCAL APP CON 128.5 235.975 | SANTA MONICA TOWER* 120.1 (CTAF) 0 257.8 | GND CON 121.9 | UNICOM 122.95 |
|-----------------------|---------------------------------------|--|-------------------------|-------------------------|



RADAR REQUIRED

| | | | | | |
|-----|------|-------|---------|-------|--|
| 600 | 5000 | CAPOB | tr 283° | SADDE | VGSI and RNAV glidepath not coincident (VGSI Angle 3.50/TCH 45). |
| ↑ | ↗ | ✦ | | △ | |

*LNAV only

MOVE

MIPT 3.3 NM to RWY 21

*2.4 NM to RWY 21

1440*

213°

225°T

3000

219°

4200

3000

GP 3.50° TCH 53

2.4 NM 0.9 NM 4.2 NM 4.6 NM

| CATEGORY | A | B | C | D |
|--------------|---|---------|---------------|---|
| LPV DA | | 440-1 | 270 (300-1) | |
| LNAV/VNAV DA | | 685-1½ | 515 (600-1½) | |
| LNAV MDA | | 1120-1¼ | 950 (1000-1¼) | |

ELEV 170 TDZE 170

211±A

213° to RWY 21

TWR 246

225

3500 X 150 1.2% Up

175

MIRL Rwy 3-21

REIL Rwy 3 and 21