

Flight Procedure Tracking Form		Action: FLIGHT CHECK	Task Type: IAP	Date Open: 12/27/2017	Task #: 2017122729110101007	Request #: 20171227291101
Procedure: VOR RWY 28 AMDT 8B			Airport ID: KFAY	Airport: FAYETTEVILLE RGNL/GRANNIS FIELD		Reimbursable #: NO
City: FAYETTEVILLE	ST: NC	GPS #:	Estimated Chart Date: 07/19/2018		FICO #:	
Fac ID: FAY		Fac. Type: VOR_DME			Specialist: MARSHALL SCOTT	
Procedure Review						
	Rec'd	Rel'd	Full Name	Comments		
Lead:	01/03/2018	04/04/2018	RICHARD CLARK			
QA:	04/04/2018					
Liaison:						
Procedure Comments: ENROUTE-NON Remark Type: INFORMATION CIRCLING CAT C FROM 700/HAA 511 TO 860 /HAA 571, VISIBILITY 1 1/2 TO 2 SM. CIRCLING CAT D FROM 740/HAA 551 TO 860 /HAA 571, VISIBILITY 2 TO 2 1/4 SM. ADDED CHART CIRCLING ICON. VDP INCREASED FROM 1.61 DME TO 1.66 DME. CONTACT: LONNIE EVERHART 405-954-4576.						

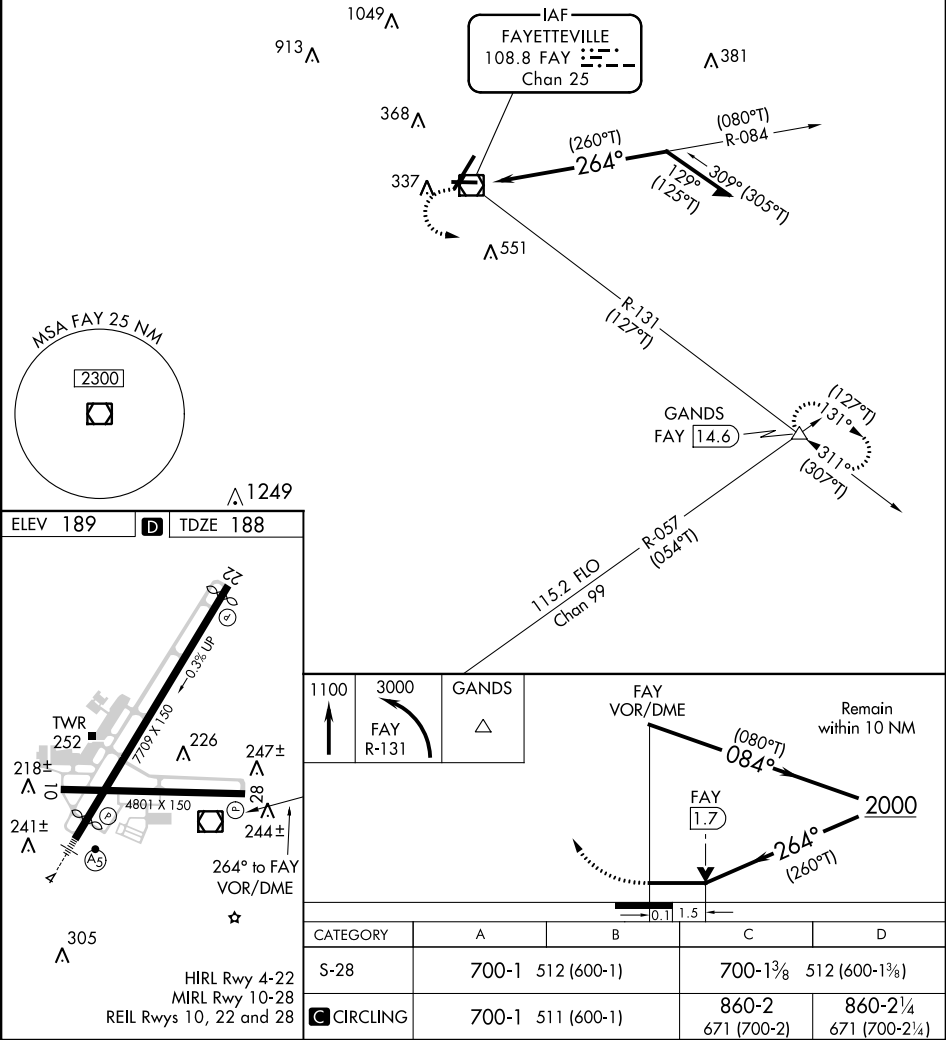


VOR/DME FAY	APP CRS	Rwy Idg	4801
108.8	264°	TDZE	188
Chan 25		Apt Elev	189

VOR RWY 28
FAYETTEVILLE RGNL/GRANNIS FIELD (FAY)

<div><div></div><div></div></div>		MISSED APPROACH: Climb to 1100 then climbing left turn to 3000 on FAY R-131 to GANDS Int/FAY 14.6 DME and hold.	
ATIS 121.25	FAYETTEVILLE APP CON 133.0 295.0	FAYETTEVILLE TOWER 118.3 269.2	GND CON 121.7 348.6

PROTOTYPE-NOT FOR NAVIGATION



OLD

FAYETTEVILLE, NORTH CAROLINA

AL-690 (FAA)

17285

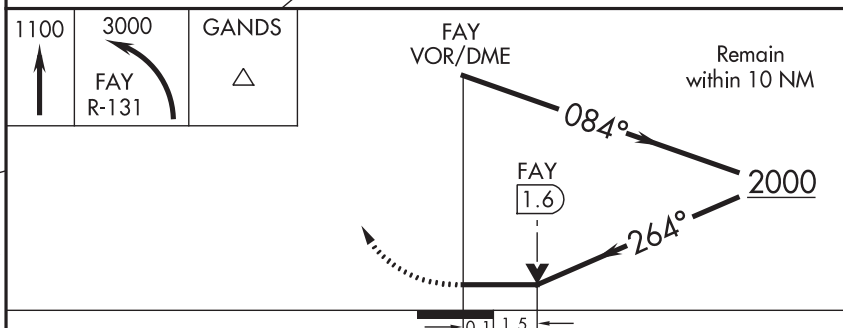
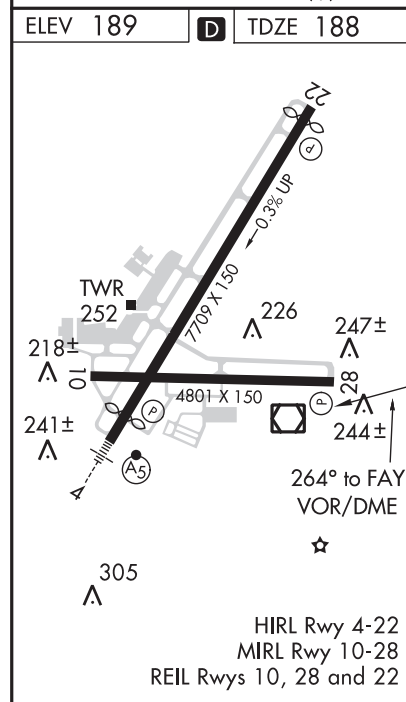
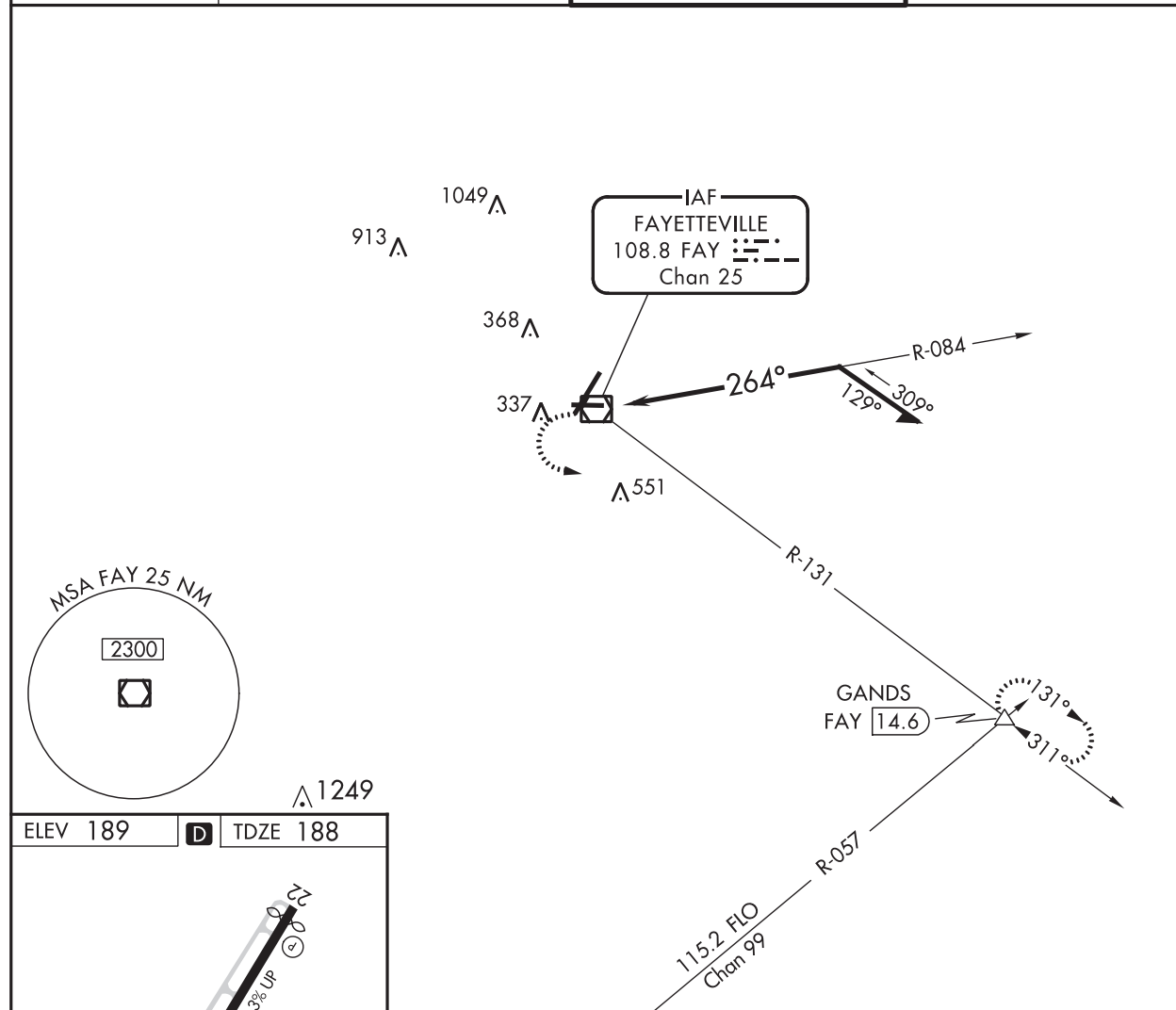
VOR/DME FAY 108.8 Chan 25	APP CRS 264°	Rwy Idg TDZE Apt Elev 4801 188 189
---	------------------------	--

VOR RWY 28

FAYETTEVILLE RGNL/GRANNIS FIELD (FAY)

T	MISSED APPROACH: Climb to 1100 then climbing left turn to 3000 via FAY R-131 to GANDS Int/FAY 14.6 DME and hold.
----------	--

ATIS 121.25	FAYETTEVILLE APP CON 133.0 295.0	FAYETTEVILLE TOWER 118.3 269.2	GND CON 121.7 348.6
-----------------------	--	--	-------------------------------



CATEGORY	A	B	C	D
S-28	700-1 512 (600-1)		700-1 $\frac{3}{8}$ 512 (600-1 $\frac{3}{8}$)	
CIRCLING	700-1 511 (600-1)		700-1 $\frac{1}{2}$ 511 (600-1 $\frac{1}{2}$)	740-2 551 (600-2)

FAYETTEVILLE, NORTH CAROLINA

Amdt 8A 28APR16

FAYETTEVILLE RGNL/GRANNIS FIELD (FAY)

34°59'N-78°53'W

VOR RWY 28

SE-2, 29 MAR 2018 to 26 APR 2018

SE-2, 29 MAR 2018 to 26 APR 2018

NM 1 2 3 4 5 6 7 8 9 10 11 12 13 14
FT 8000 16000 24000 32000 40000 48000 56000 64000 72000 80000

fpomws | fayv28new (PROD) | 1 Mar 2018 11:00:49 | 1" = 8350.0 feet (MAP)

AIRPORT ID	KFAY
AIRPORT NAME	FAYETTEVILLE RGNL/GRANNIS FIELD
CITY	FAYETTEVILLE
STATE	NC
Proc ID:	VOR RWY 28
Amdt #	8B
Scale	1:100,000

NO.	SEGMENT	OBSTRUCTION	ELEV
1	VOR FINAL	TOWER	381
6	CIRCLING A	POLE	337
7	CIRCLING B	POLE	343
8	CIRCLING C/D	TOWER	551

