

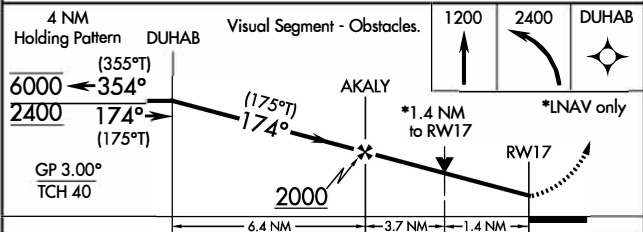
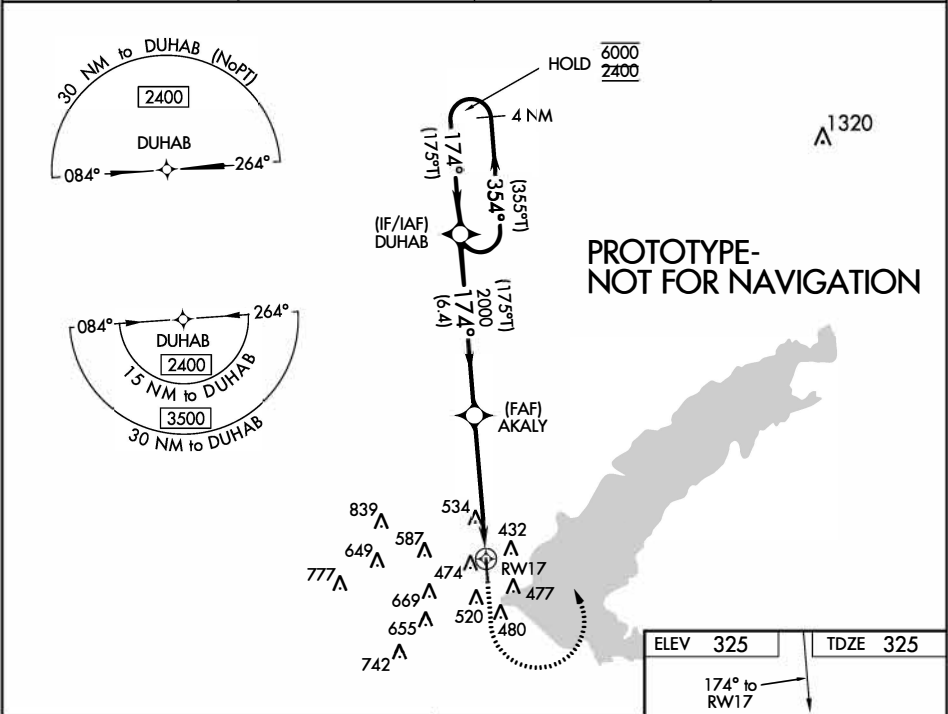
Flight Procedure Tracking Form		Action: FLIGHT CHECK	Task Type: IAP	Date Open: 12/18/2017	Task #: 2017121834138401001	Request #: 20171218341384
Procedure: RNAV (GPS) RWY 17 AMDT 2			Airport ID: KMBO	Airport: BRUCE CAMPBELL FIELD	Reimbursable #: NO	
City: MADISON	ST: MS	GPS #:	Estimated Chart Date: 01/03/2019		FICO #: 1219297	
Fac ID: N/A		Fac. Type:		Specialist: TYLER MITCHELL		
Procedure Review						
	Rec'd	Rel'd	Full Name	Comments		
Lead:	05/11/2018	10/04/2018	ANDI LAU	<div style="border: 1px solid green; padding: 5px; display: inline-block;"> APPROVED <small>By Steven M Barnett at 12:06 pm, Nov 26, 2018</small> </div> <div style="float: right; text-align: center;"> QUALITY 23 CHECKED </div>		
QA:	10/04/2018	10/04/2018	ANDI LAU			
Liaison:	10/04/2018	10/04/2018	MARY MCDONALD			
Procedure Comments:			Remark Type: INFORMATION			
<p>ADDED LPV AND LNAV/VNAV LINES OF MINIMA AND REMOVED NIGHT RESTRICTIONS.</p> <p>CONTACT LONNIE EVERHART 405-954-4576</p> <p>11/20/18: THIS IS A CORRECTED COPY OF THE FORM APPROVED ON 11/7/18.</p> <p>1. CHART NOTE CHANGED FROM "BARO-VNAV AND VDP NA WHEN USING JACKSON-EVERS INTL ALTIMETER SETTING" TO "BARO-VNAV AND VDP NA WHEN USING JACKSON-MEGDAR WILEY EVERS INTL ALTIMETER SETTING".</p> <p>2. CHART NOTE CHANGED FROM "WHEN LOCAL ALTIMETER SETTING NOT RECEIVED, USE JACKSON- EVERS INTL ALTIMETER SETTING AND INCREASE ALL DA 21 FEET AND ALL MDA 40 FEET, AND INCREASE LNAV/VNAV VISIBILITY 1/8 SM, AND CIRCLING CATS C/D VISIBILITY 1/4 MILE" WHEN LOCAL ALTIMETER SETTING NOT RECEIVED, USE JACKSON-MEGDAR WILEY EVERS INTL ALTIMETER SETTING AND INCREASE ALL DA 21 FEET AND ALL MDA 40 FEET, AND INCREASE LNAV/VNAV VISIBILITY 1/8 SM, AND CIRCLING CATS C/D VISIBILITY 1/4 SM".</p> <p>3. CHANGED LINE 6 FROM "GP ALT AT FAF: AKALY" TO "GP ALT AT FAF: AKALY 2000".</p> <p>4. CHANGED ALTERNATE MINIMUMS LINE FROM "STANDARD - CAT D 800-2 1/4" TO "STANDARD - CAT D 800-2 1/4, NA WHEN LOCAL WEATHER NOT AVAILABLE."</p>						

WAAS CH 69231 W17A	APP CRS 174°	Rwy Idg TDZE Apt Elev	4444 325 325
--	------------------------	-----------------------------	---

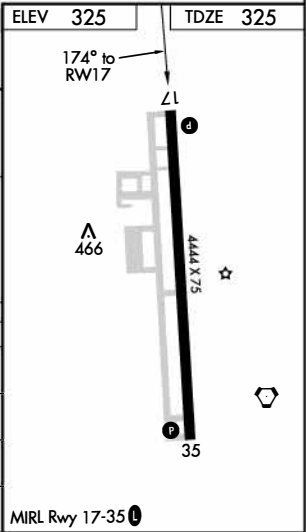
RNAV (GPS) RWY 17
BRUCE CAMPBELL FIELD (MBO)

RNP APCH. BARO-VNAV and VDP NA when using Jackson-Evers Init altimeter setting ▼ Rwy 17 helicopter visibility reduction below ¾ SM NA. For uncompensated ▲ Baro-VNAV systems, LNAV /VNAV NA below -1.5°C or above 54°C	MISSED APPROACH: Climb to 1200 then climbing left turn to 2400 direct DUHAB and hold.
---	---

AWOS-3PT 119.125	JACKSON APP CON ★ 123.9 317.7	CLNC DEL 125.9	UNICOM 122.8 (CTAF) 0
----------------------------	---	--------------------------	---------------------------------



CATEGORY	A	B	C	D
LPV DA	600-7/8 275 (300-7/8)			
LNAV/VNAV DA	832-13/8 507 (600-13/8)			
LNAV MDA	800-1 475 (500-1)	800-13/8 475 (500-13/8)	800-13/8 475 (500-21/4)	800-13/8 475 (500-21/4)
CIRCLING	820-1 495 (500-1)	840-1 515 (600-1)	1040-2 715 (800-2)	1040-21/4 715 (800-21/4)



OLD

MADISON, MISSISSIPPI

AL-5164 (FAA)

18088

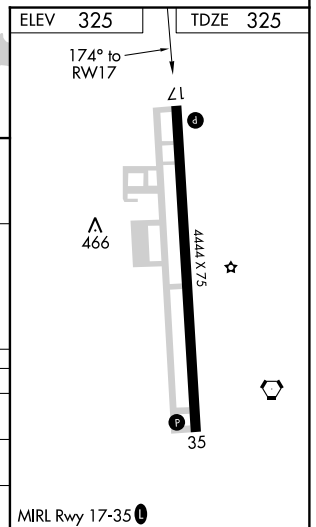
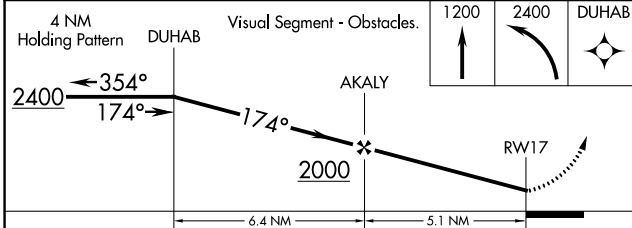
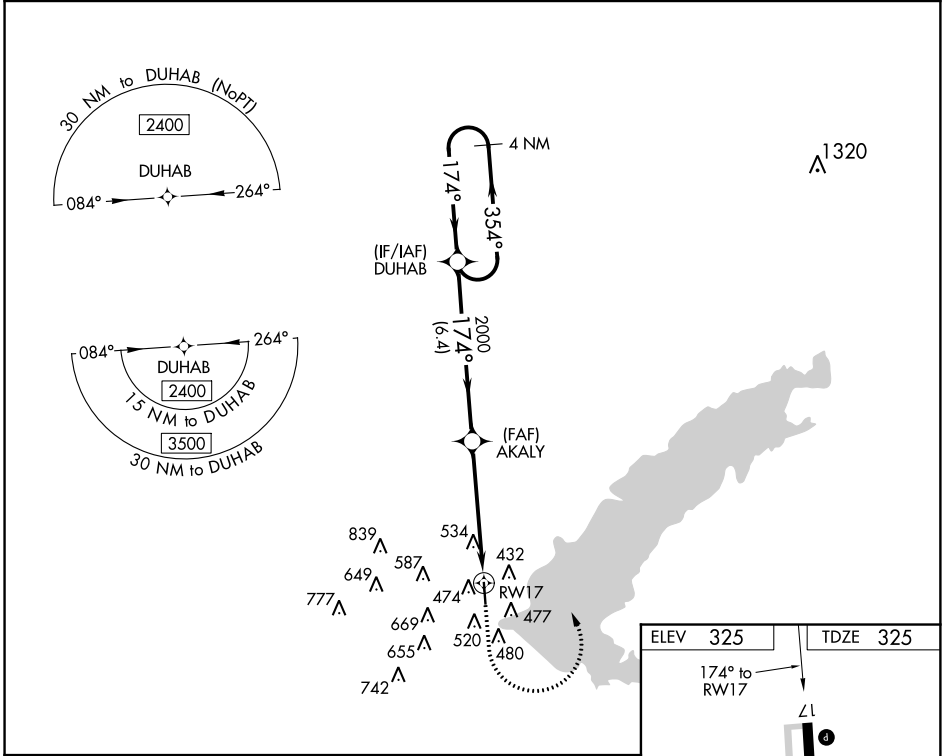
WAAS CH 69231 W17A	APP CRS 174°	Rwy Idg TDZE 325 Apt Elev 325
--	------------------------	---

RNAV (GPS) RWY 17

BRUCE CAMPBELL FIELD (MBO)

<p>NA</p> <p>DME/DME RNP-0.3 NA. When local altimeter setting not received, use Jackson-Evers Intl altimeter setting and increase all MDA 40 feet and increase Circling Cts C/D visibility ¼ mile. Rwy 17 helicopter visibility reduction below ¾ SM NA.</p>	<p>MISSED APPROACH: Climb to 1200 then climbing left turn to 2400 direct DUHAB and hold.</p>
---	--

AWOS-3PT 119.125	JACKSON APP CON ★ 123.9 317.7	CLNC DEL 125.9	UNICOM 122.8 (CTAF)
----------------------------	---	--------------------------	-------------------------------



CATEGORY	A	B	C	D
LP MDA	780-1	455 (500-1)	780-1 ³ / ₈	455 (500-1 ³ / ₈)
LNAV MDA	800-1	475 (500-1)	800-1 ³ / ₈	475 (500-1 ³ / ₈)
CIRCLING	840-1 515 (600-1)	860-1 535 (600-1)	980-1 ³ / ₄ 655 (700-1 ³ / ₄)	980-2 655 (700-2)

MADISON, MISSISSIPPI
Amdt 1C 07DEC17

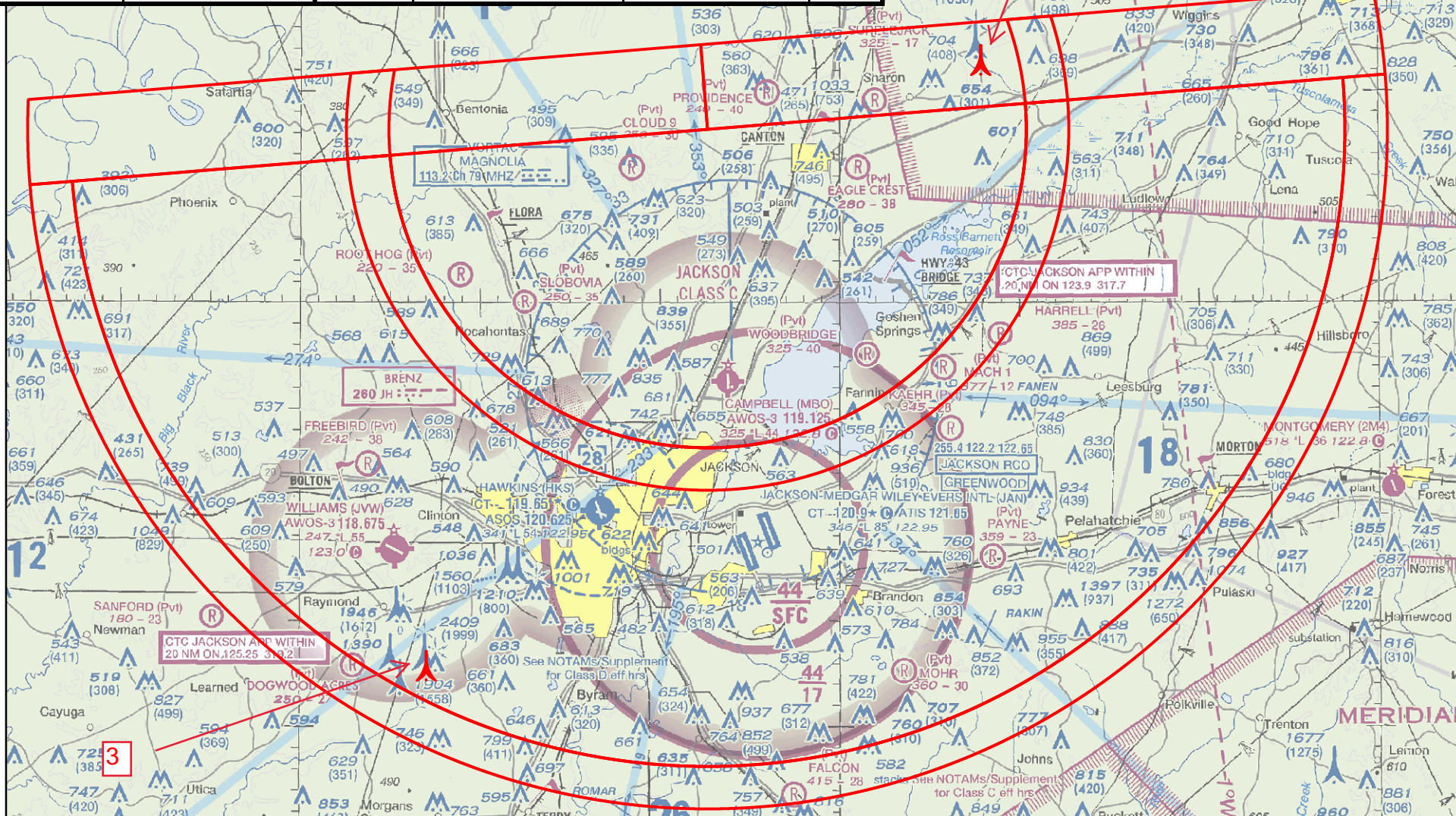
32°26'N-90°06'W

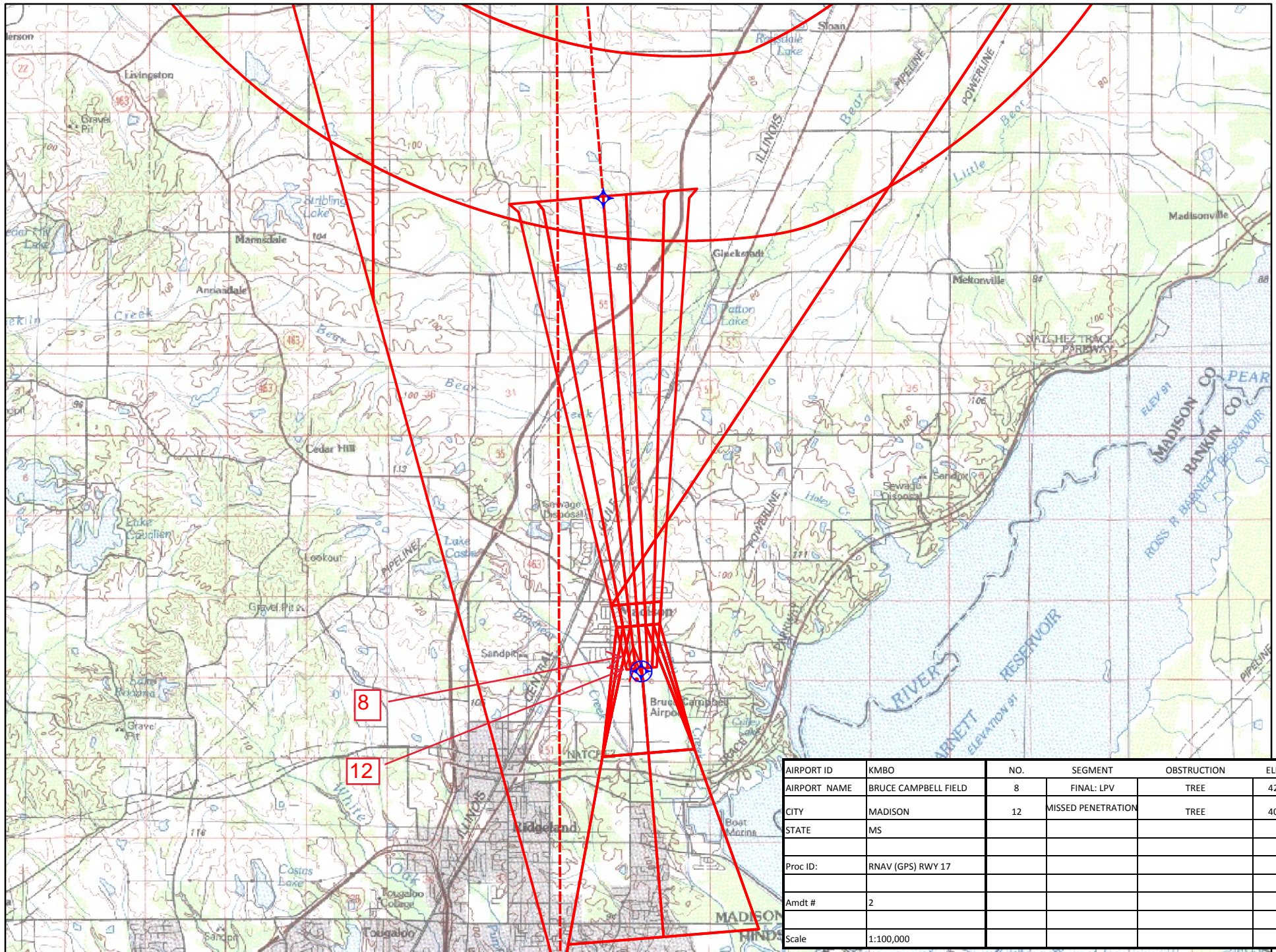
BRUCE CAMPBELL FIELD (MBO)
RNAV (GPS) RWY 17

SC-4, 16 AUG 2018 to 13 SEP 2018

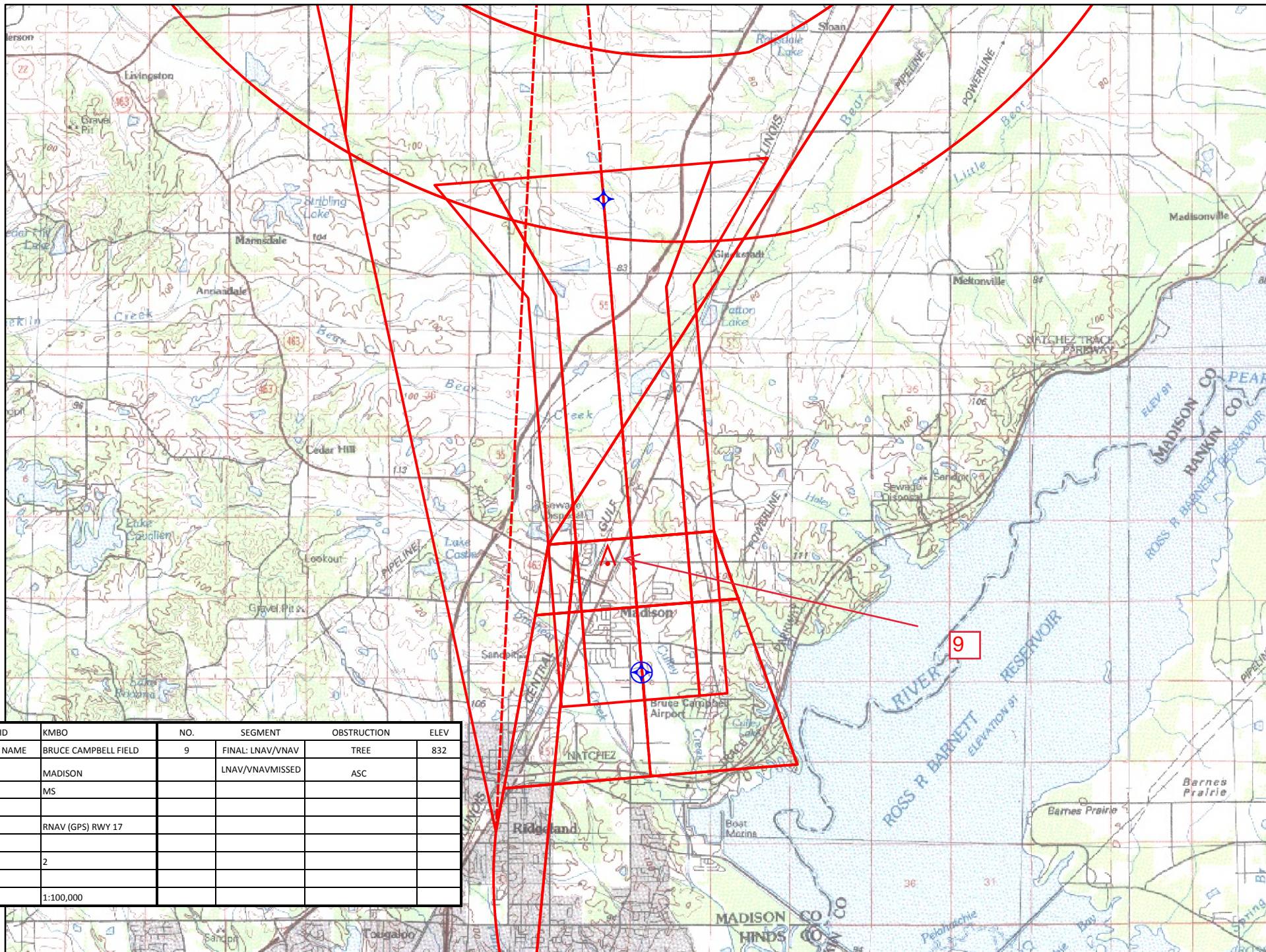
SC-4, 16 AUG 2018 to 13 SEP 2018

AIRPORT ID	KMBO	NO.	SEGMENT	OBSTRUCTION	ELEV
AIRPORT NAME	BRUCE CAMPBELL FIELD	1	TAA (264/15 CW 084/15)	TOWER	1320
CITY	MADISON	3	TAA (264/30 CW 084/30)	TOWER	2409
STATE	MS				
Proc ID:	RNAV (GPS) RWY 17				
Amdt #	2				
Scale	1:500,000				





AIRPORT ID	KMBO	NO.	SEGMENT	OBSTRUCTION	ELEV
AIRPORT NAME	BRUCE CAMPBELL FIELD	8	FINAL: LPV	TREE	427
CITY	MADISON	12	MISSSED PENETRATION	TREE	403
STATE	MS				
Proc ID:	RNAV (GPS) RWY 17				
Amdt #	2				
Scale	1:100,000				



AIRPORT ID	KMBO	NO.	SEGMENT	OBSTRUCTION	ELEV
AIRPORT NAME	BRUCE CAMPBELL FIELD	9	FINAL: LNAV/VNAV	TREE	832
CITY	MADISON		LNAV/VNAVMISSED	ASC	
STATE	MS				
Proc ID:	RNAV (GPS) RWY 17				
Amdt #	2				
Scale	1:100,000				

AIRPORT ID	KMBO	NO.	SEGMENT	OBSTRUCTION	ELEV
AIRPORT NAME	BRUCE CAMPBELL FIELD	9	FINAL: LNAV & CIRC CAT B	TREE	832
CITY	MADISON		LNAV MISSED	ASC	
STATE	MS	15	CIRC CAT A	TANK	520
		16	CIRC CAT C&D	TOWER	681
Proc ID:	RNAV (GPS) RWY 17				
Amdt #	2				
Scale	1:100,000				

