

<b>Flight Procedure Tracking Form</b>		<b>Action:</b> FLIGHT CHECK	<b>Task Type:</b> IAP	<b>Date Open:</b> 12/12/2017	<b>Task #:</b> 2017121228234501001	<b>Request #:</b> 20171212282345
<b>Procedure:</b> ILS OR LOC RWY 2 AMDT 4C				<b>Airport ID:</b> KDAN	<b>Airport:</b> DANVILLE RGNL	<b>Reimbursable #:</b> NO
<b>City:</b> DANVILLE	<b>ST:</b> VA	<b>GPS #:</b>	<b>Estimated Chart Date:</b> 05/24/2018		<b>FICO #:</b>	
<b>Fac ID:</b> DAN		<b>Fac. Type:</b> ILS			<b>Specialist:</b> MIKE MELSEN	
<b>Procedure Review</b>						
	<b>Rec'd</b>	<b>Rel'd</b>	<b>Full Name</b>	<b>Comments</b>		
<b>Lead:</b>	12/13/2017	02/07/2018	ALLAN WILL			
<b>QA:</b>	02/07/2018	2/22, 3/7	CLARK			
<b>Liaison:</b>						
<b>Procedure Comments:</b> ENROUTE-NON <b>Remark Type:</b> INFORMATION  ABBREVIATED AMENDMENT FOR MAG VAR CHANGE TO RALEIGH/DURHAM (RDU) VORTAC ONLY.  ASSIGNED MAG VAR: RDU VORTAC: OLD 4W-NEW 9W.  CONTACT: JACOB POWERS; 405.954.8702						





OLD

DANVILLE, VIRGINIA

AL-599 (FAA)

15232

LOC I-DAN <b>110.7</b>	APP CRS <b>025°</b>	Rwy Idg <b>5600</b> TDZE <b>558</b> Apt Elev <b>571</b>
---------------------------	------------------------	------------------------------------------------------------------------

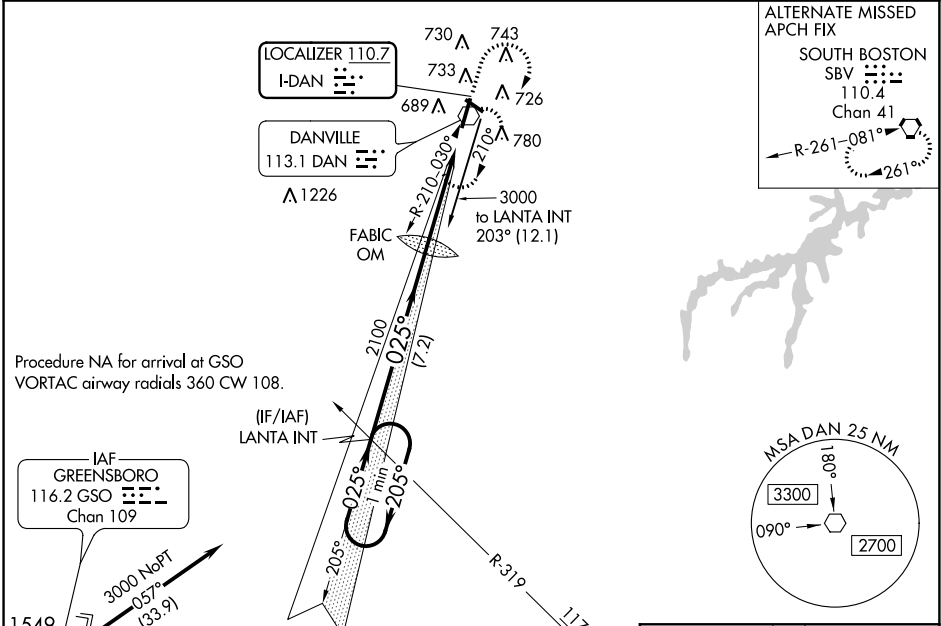
ILS or LOC RWY 2  
DANVILLE RGNL (DAN)

**⚠** When local altimeter setting not received, use Roxboro, NC altimeter setting and increase all DA 62 feet and all MDA 80 feet, increase S-LOC 2 visibility Cats C and D ¼ mile. For inoperative MALSRR when using Roxboro, NC altimeter setting, increase S-ILS 2 visibility all Cats to 1.

**MALSRR**

**MISSED APPROACH:**  
Climb to 2300 then climbing right turn to 3000 direct DAN VOR and hold.

ASOS <b>128.125</b>	WASHINGTON CENTER <b>124.05 307.0</b>	UNICOM <b>123.05 (CTAF) 0</b>
------------------------	------------------------------------------	----------------------------------



CATEGORY	A	B	C	D
S-ILS 2	758-½ 200 (200-½)			
S-LOC 2	1040-½	482 (500-½)	1040-¾ 482 (500-¾)	1040-1 482 (500-1)
CIRCLING	1080-1	509 (500-1)	1080-1½ 509 (500-1½)	1140-2 569 (600-2)

ELEV 571	<b>D</b>	TDZE 558
△ 681±	△ 612±	
641	623☆	
623☆	△ 605	
△ 621±	663±	
△ 606±	HIRL Rwy 2-20	
569±	MIRL Rwy 13-31	
△ 2	REIL Rwy 13, 20 and 31	
0.5% UP	025° 4.5 NM from FAF	
5800 X 100	FAF to MAP 4.5 NM	
1.7% UP	Knots	
1.3% UP	60 90 120 150 180	
Min:Sec	4:30 3:00 2:15 1:48 1:30	

DANVILLE, VIRGINIA  
Amdt 4B 16OCT14

36°34'N-79°20'W

DANVILLE RGNL (DAN)  
ILS or LOC RWY 2

NE-3, 04 JAN 2018 to 01 FEB 2018

NE-3, 04 JAN 2018 to 01 FEB 2018