

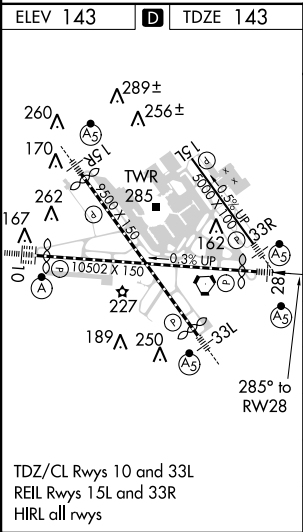
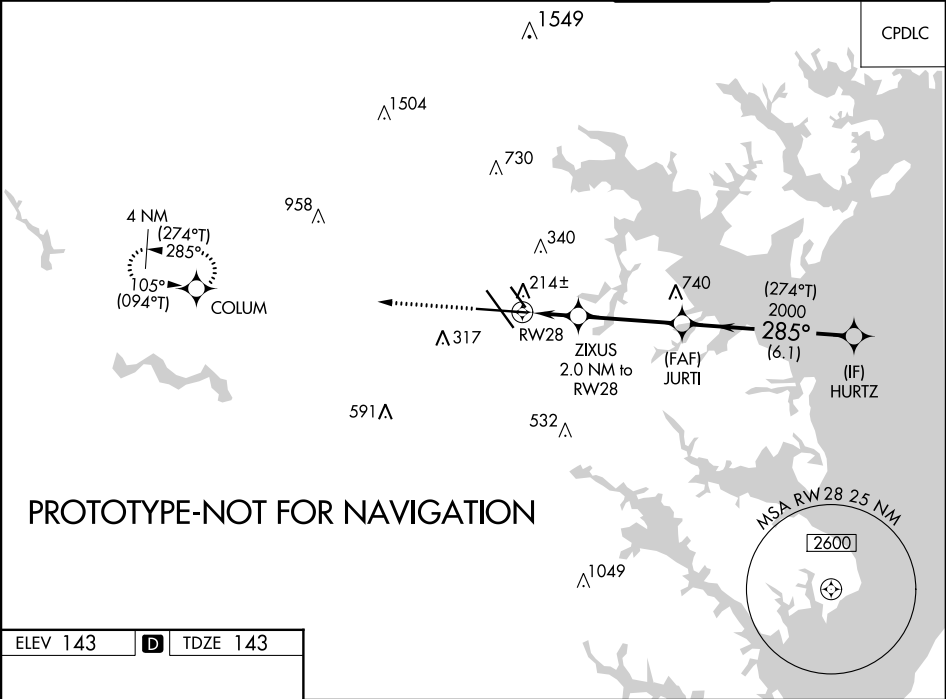
Flight Procedure Tracking Form		Action: FLIGHT CHECK	Task Type: IAP	Date Open: 11/29/2017	Task #: 2017112928299101003	Request #: 20171129282991
Procedure: RNAV (GPS) Y RWY 28 AMDT 2C			Airport ID: KBWI	Airport: BALTIMORE/WASHINGTON INTL THURGOOD MARSHALL		Reimbursable #: NO
City: BALTIMORE	ST: MD	GPS #:	Estimated Chart Date: 05/24/2018		FICO #:	
Fac ID: N/A		Fac. Type:			Specialist: PETER BUSSEY	
Procedure Review						
	Rec'd	Rel'd	Full Name	Comments		
Lead:	11/29/2017					
QA:			J ZEDER 02/08/2018 16			
Liaison:						
Procedure Comments:			ENROUTE-NON	Remark Type: INFORMATION		
ABBREVIATED AMENDMENT. RAISED LNAV/VNAV DA. ACTIVE DATA FOR KBWI AIRPORT. ASSIGNED MAGVAR: KBWI: 11W/2000. CONTACT: VICTOR NASO/GEORGE DAVIS: 405.954.5181/9960.						

WAAS CH 48808 W28A	APP CRS 285°	Rwy Idg TDZE Apt Elev	9802 143 143
--	------------------------	-----------------------------	---

BALTIMORE/ WASHINGTON INTL THURGOOD MARSHALL (BWI)

RNAV (GPS) Y RWY 28

RNP APCH.				MALS R	MISSED APPROACH: Climb to 2500 direct COLUMN and hold.	
▼ For uncompensated Baro-VNAV systems, LNAV/VNAV NA below -12°C (11°F) or above 54°C (130°F). For inop ALS, increase LNAV/VNAV all Cats visibility to RVR 4000. ** RVR 1800 authorized with use of FD or HUD to DA.				AS		
D-ATIS 115.1 127.8	POTOMAC APP CON 119.0 282.275 (020°-100°) 119.7 290.475 (131°-180°) 124.55 317.425 (101°-130°) 128.7 307.9 (181°-019°)			BALTIMORE TOWER 119.4 257.8	GND CON 121.9	CLNC DEL 118.05



2500 COLUM		ZIXUS 2 NM to RWY 28		JURTI 2000	HURTZ
* LNAV only.		* 0.9 NM to RWY 28	* 820		2000
RWY 28		0.9 NM	1.1 NM	3.7 NM	6.1 NM
CATEGORY	A	B	C	D	
LPV DA **	343/24		200 (200-½)		
LNAV/VNAV DA	395/24		252 (300-½)		
LNAV MDA	480/24 337 (400-½)		480/26 337 (400-¾)		
CIRCLING	640-1 497 (500-1)	660-1 517 (600-1)	700-1½ 557 (600-1½)	860-2¼ 717 (800-2¼)	GP 3.00° TCH 55

**RNAV (GPS) Y RWY 28, AMDT 2C
BALTIMORE, MD
BALTIMORE/WASHINGTON INTL
THURGOOD MARSHALL (KBWI)
LNAV/VNAV FINAL 100K**

5: LNAV/VNAV: 221 TREE

