

Flight Procedure Tracking Form		Action: AMENDMENT	Task Type: IAP	Date Open: 11/29/2017	Task #: 2017112928093201001	Request #: 20171129280932
Procedure: RNAV (GPS) RWY 33 AMDT 0A				Airport ID: KD00	Airport: NORMAN COUNTY ADA/TWIN VALLEY	Reimbursable #: NO
City: ADA/TWIN VALLEY	ST: MN	GPS #:	Estimated Chart Date: 05/24/2018		FICO #:	
Fac ID: N/A		Fac. Type:			Specialist: BRYAN HERRICK	
Procedure Review						
	Rec'd	Rel'd	Full Name		Comments	
Lead:	11/29/2017	01/04/2018	VICTOR NASO			
QA:	01/04/2018		J ZEDER 02/15/2018 ¹⁶			
Liaison:						
Procedure Comments:			Remark Type: INFORMATION			
ABBREVIATED AMENDMENT HELICOPTER VISIBILITY REDUCTION AND PROCEDURE NA AT NIGHT CHART NOTES - RWYS 15/33 DO NOT HAVE SURVEYS: UNABLE TO VERIFY VISUAL SURFACES CLEAR FLIGHT INSPECTION NOT REQUIRED - PROCESSED IAW AIRCRAFT OPERATIONS GROUP (AJW-333) MEMO DEC 22, 2017 ASSIGNED MAG VAR: 5E/2000 CONTACT VICTOR NASO/GEORGE DAVIS: 405.954.5181/9960						

ADA/TWIN VALLEY, MINNESOTA

AL-9303 (FAA)

FIG

APP CRS
329°

Rwy Idg
TDZE
Apt Elev

3103
954
954

RNAV (GPS) RWY 33

NORMAN COUNTY ADA/TWIN VALLEY (D00)

RNP approach

▼ Use Hector Intl altimeter setting. Rwy 33 helicopter visibility reduction below 1 SM NA. Procedure NA at night.

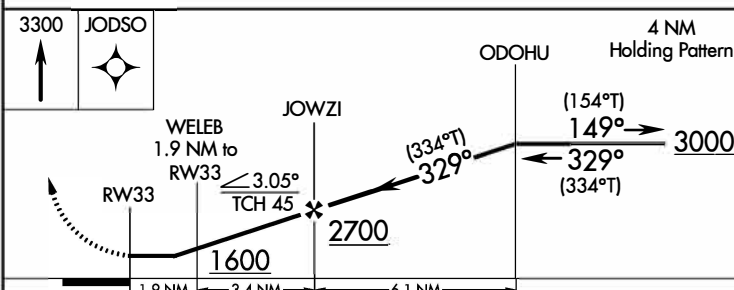
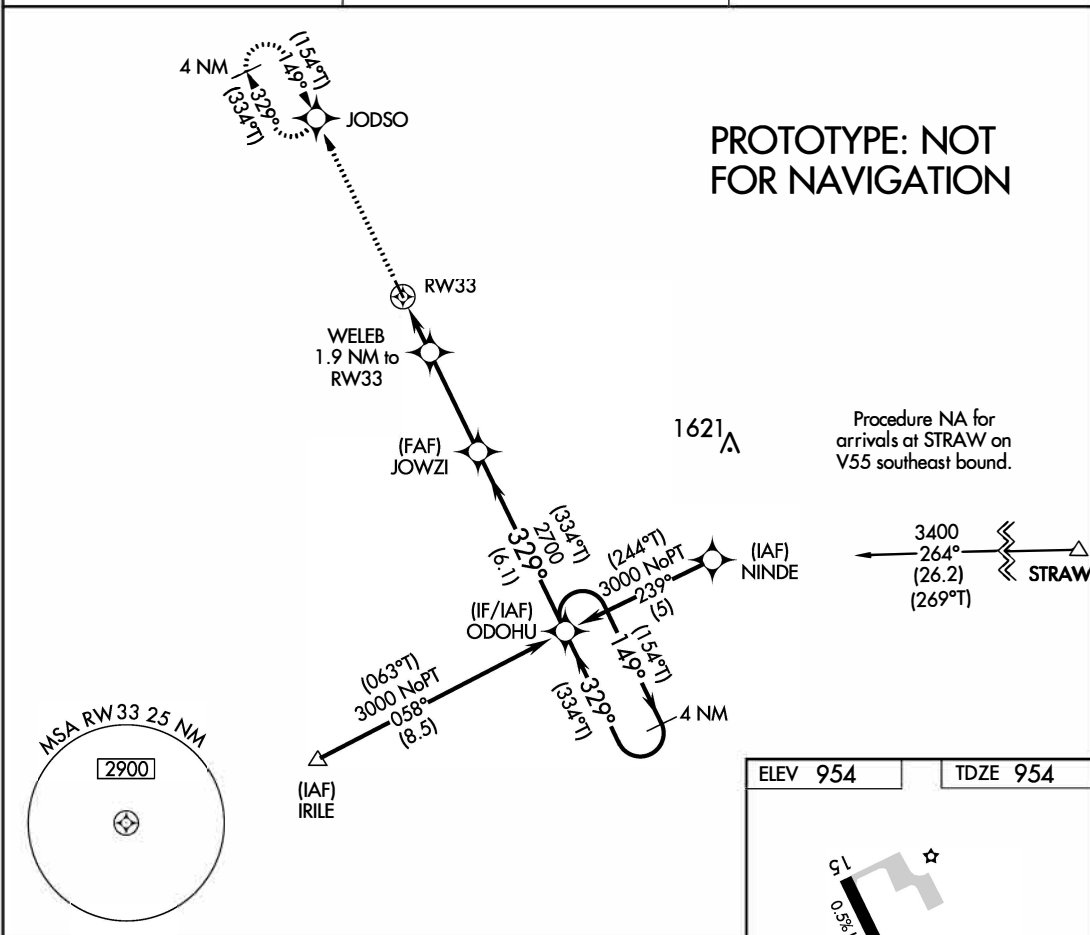
▲ NA

MISSED APPROACH: Climb to 3300 direct JODSO and hold, continue climb-in-hold to 3300.

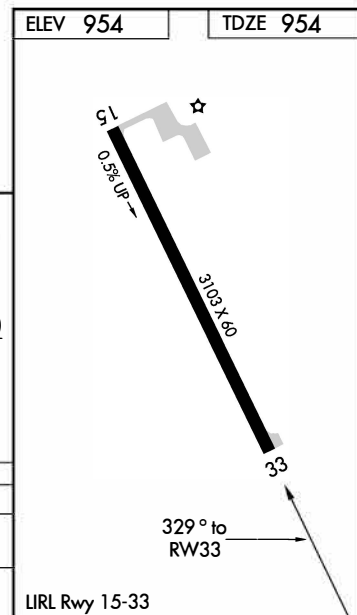
HECTOR INTL AWOS-3
124.5 379.2

FARGO APP CON
120.4 377.15

CTAF
122.9



CATEGORY	A	B	C	D
LNAV MDA	1540-1 586 (600-1)	1540-1 586 (600-1)	1540-1 586 (600-1)	NA
CIRCLING	1540-1 586 (600-1)	1540-1 586 (600-1)	1540-1 586 (600-1)	NA



ADA/TWIN VALLEY, MINNESOTA

NORMAN COUNTY ADA/TWIN VALLEY (D00)

Orig-A FIG

47°16'N-96°24'W

RNAV (GPS) RWY 33

AUTOMATED AL-9303 RNAV (GPS) RWY 33

NC-1

12 FEB 2018

COMPILER: CG

REVIEWER:

DBL CHKR:

EFF: FIG