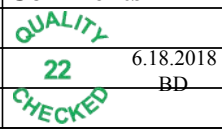


Flight Procedure Tracking Form		Action: FLIGHT CHECK	Task Type: IAP	Date Open: 11/22/2017	Task #: 2017112226257801002	Request #: 20171122262578
Procedure: RNAV (GPS) RWY 18 AMDT 1			Airport ID: KJVV	Airport: CLARK RGNL		Reimbursable #: NO
City: JEFFERSONVILLE	ST: IN	GPS #:	Estimated Chart Date: 09/13/2018		FICO #:	
Fac ID: N/A		Fac. Type:			Specialist: RUSSELL ROSLEWSKI	
Procedure Review						
	Rec'd	Rel'd	Full Name	Comments		
Lead:	03/21/2018					
QA:						
Liaison:						
Procedure Comments:			Remark Type: INFORMATION			
HARD DATE - RUNWAY CONSTRUCTION WHEN PUBLISHED, CANCEL T-NOTAM 8/8199 DEZ SILAGYI - 405-954-5340						

JEFFERSONVILLE, INDIANA

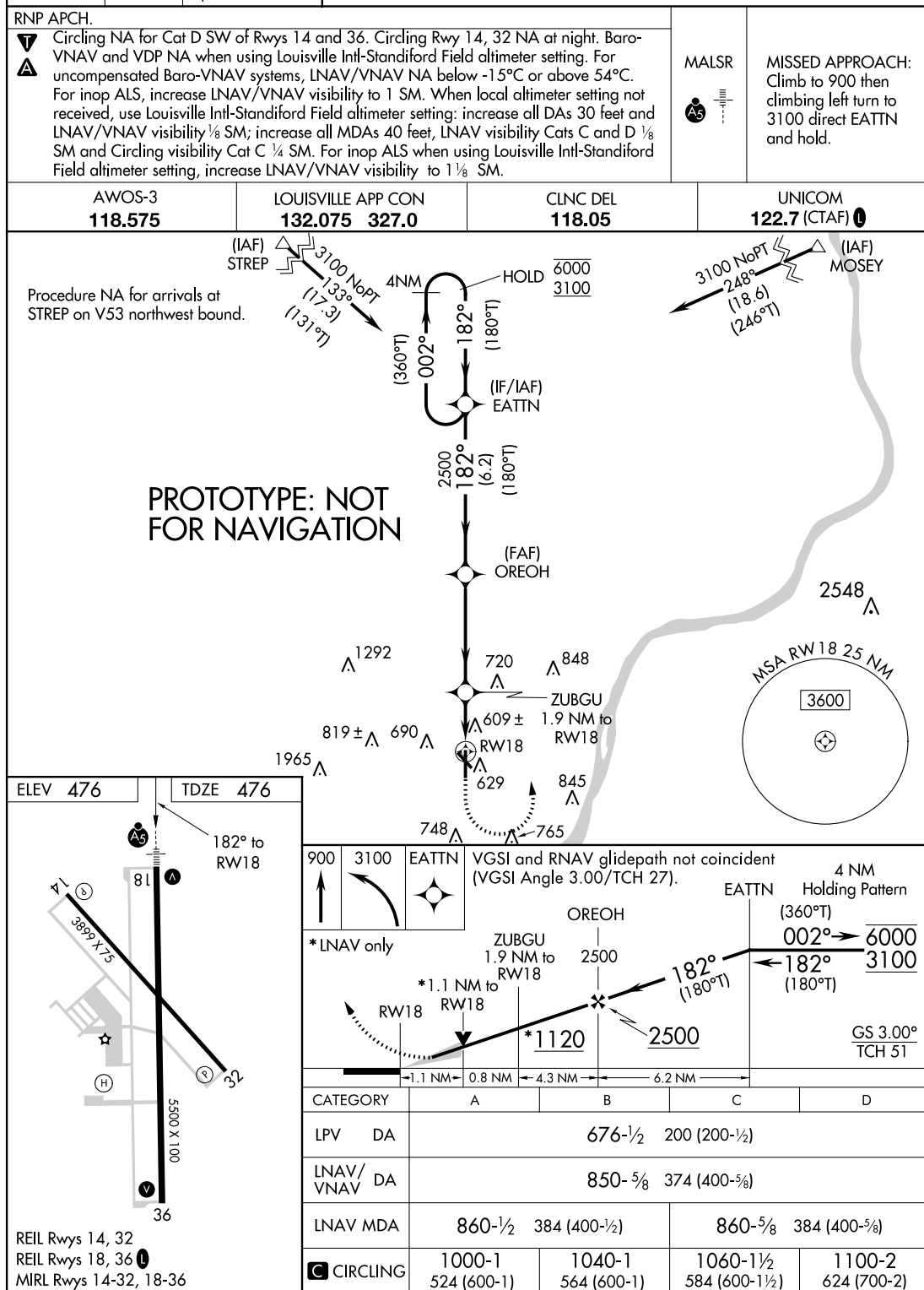
AL-6715 (FAA)

FIG

WAAS CH 82426 W18A	APP CRS 182°	Rwy Idg TDZE Apt Elev	5500 476 476
--	------------------------	-----------------------------	---

RNAV (GPS) RWY 18

CLARK RGNL (JVY)



JEFFERSONVILLE, INDIANA

38°22'N - 85°44'W

CLARK RGNL (JVY)

RNAV (GPS) RWY 18

AUTOMATED AL-6715 RNAV (GPS) RWY 18

FIG

EC-2

6/19/18

COMPILER: JMP

REVIEWER:

DBL CHKR:

EFF: FIG

WAAS CH 82426 W18A	APP CRS 182°	Rwy Idg TDZE 474 Apt Elev 474
--	------------------------	---

RNAV (GPS) RWY 18

CLARK RGNL (JVY)

⚠ Night landing: Rwy 14, 32 NA. Baro-VNAV NA when using Louisville Intl-Standford Field altimeter setting. For uncompensated Baro-VNAV systems, LNAV/VNAV NA below -15°C (5°F) or above 40°C (104°F). When local altimeter setting not received, use Louisville Intl-Standford Field altimeter setting and increase all DA 31 feet and all MDA 40 feet. DME/DME RNP-0.3 NA. For inoperative MALSR with local altimeter or when using Louisville Intl-Standford Field altimeter setting, increase LNAV/VNAV all Cats visibility ¼ mile.

MALSR



MISSED APPROACH:
Climb to 900 then climbing left turn to 3100 direct EATTN and hold.

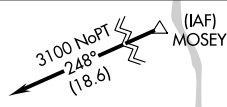
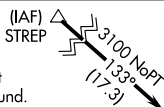
AWOS-3
118.575

LOUISVILLE APP CON
132.075 327.0

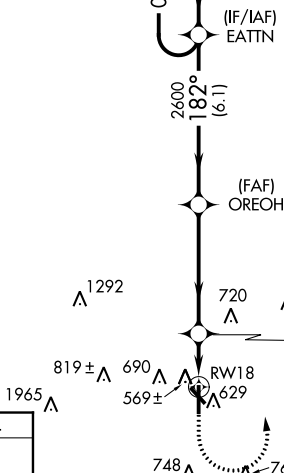
CLNC DEL
118.05

UNICOM
122.7 (CTAF) 0

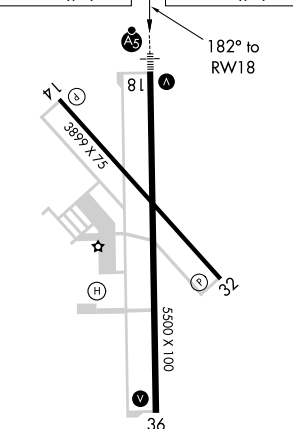
Procedure NA for arrivals at STREP on V53 northwest bound.




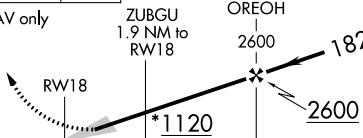
Procedure NA for arrivals at MOSEY on V47 northeast bound.

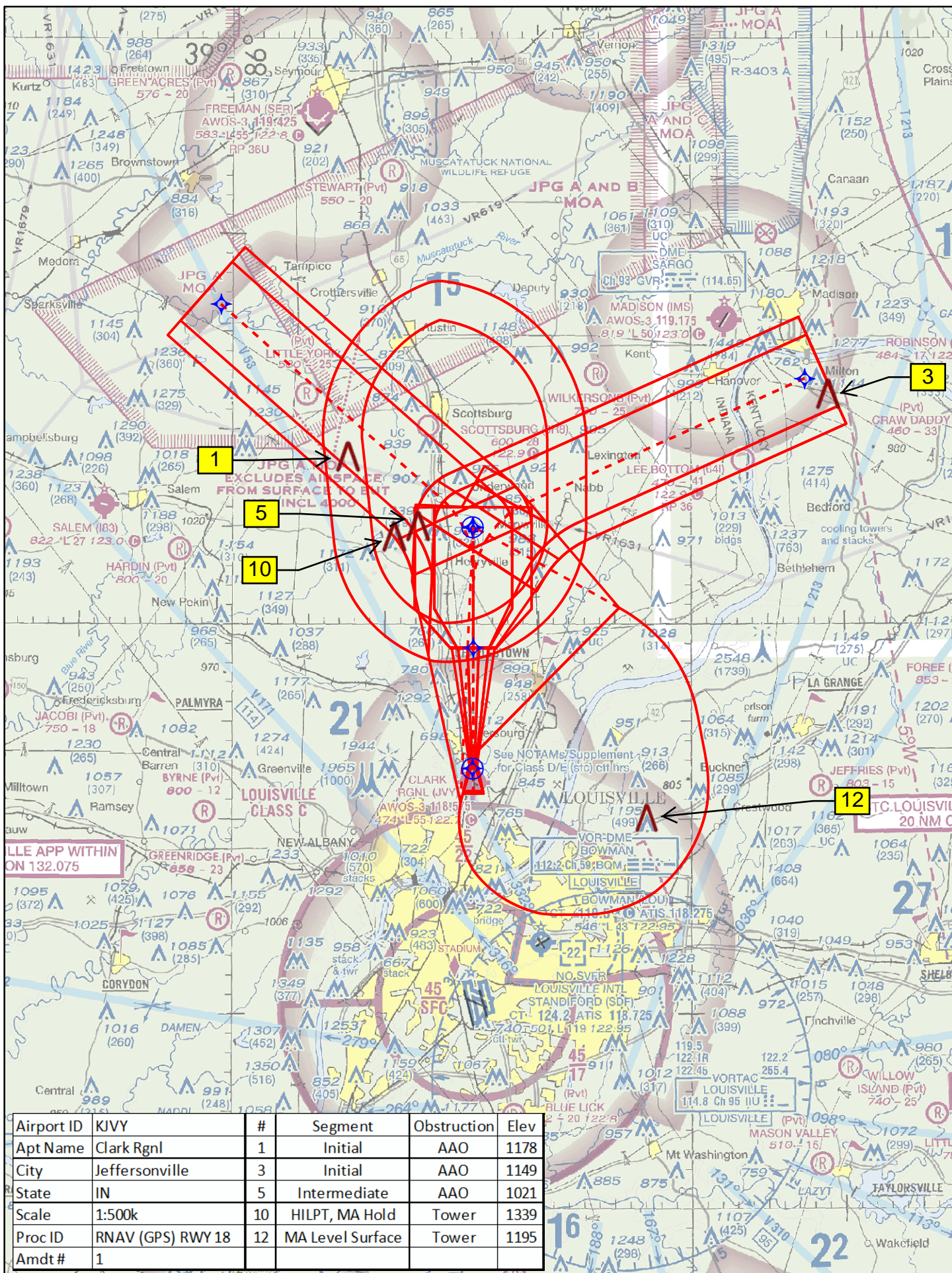


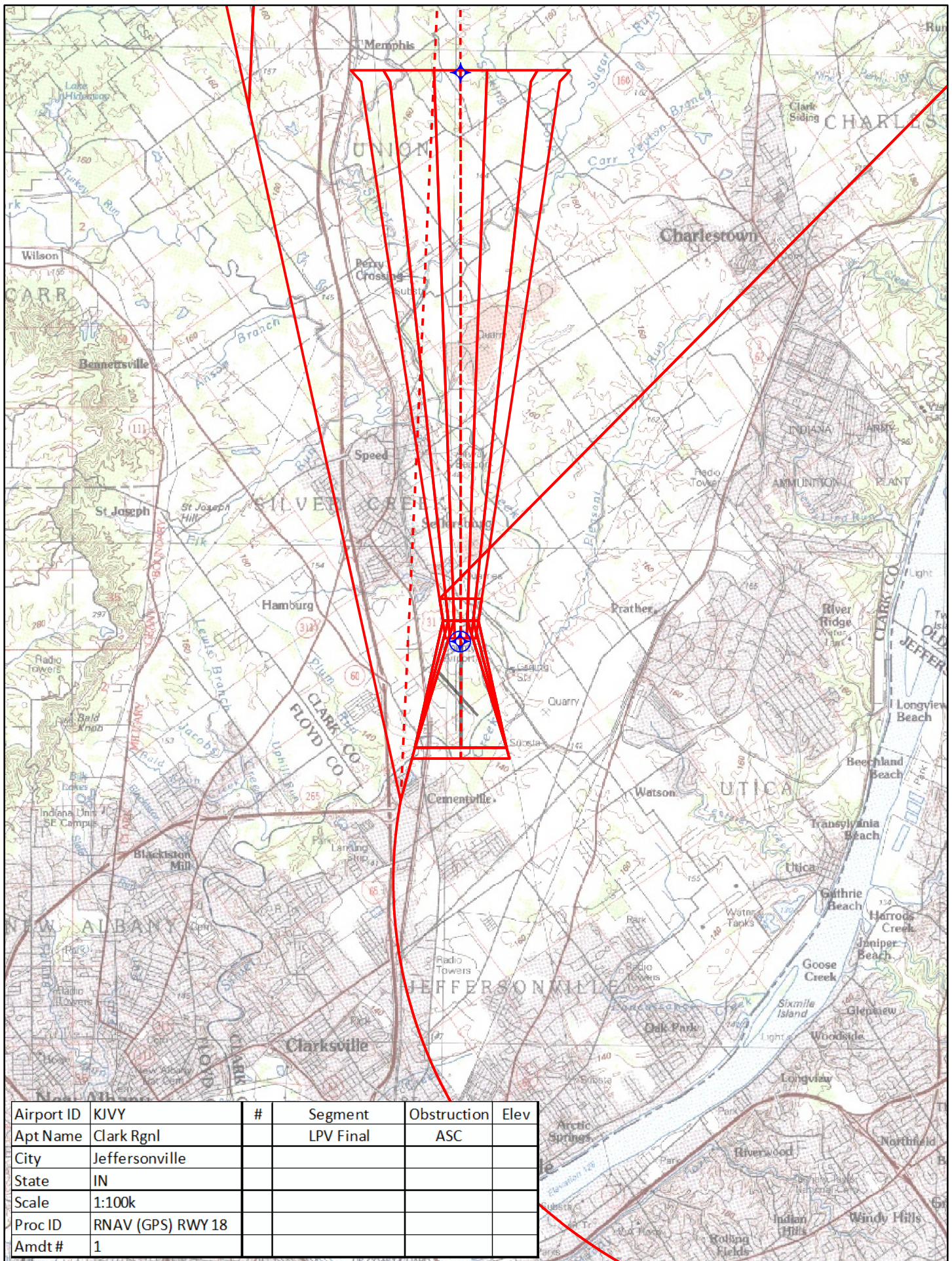
ELEV 474 TDZE 474



REIL Rwy 14, 32
REIL Rwy 18, 36
MIRL Rwy 14-32, 18-36

900 ↑		3100 ↖		EATTN 		VGSI and RNAV glidepath not coincident (VGSI 3.00 Angle/TCH 27).		4 NM Holding Pattern	
*LNAV only		ZUBGU 1.9 NM to RW18		OREOH 2600		EATTN		002° → ← 182° 3100	
		*1120		2600		GS 3.00° TCH 45°			
		1.9 NM		4.6 NM		6.1 NM			
CATEGORY		A		B		C		D	
LPV DA				674-½		200 (200-½)			
LNAV/ VNAV DA				730-½		256 (300-½)			
LNAV MDA		820-½ 346 (400-½)		820-⅝ 346 (400-⅝)					
CIRCLING		1040-1 566 (600-1)		1040-1½ 566 (600-1½)		1040-2 566 (600-2)			





Airport ID	KJVV	#	Segment	Obstruction	Elev
Apt Name	Clark Rgnl		LPV Final	ASC	
City	Jeffersonville				
State	IN				
Scale	1:100k				
Proc ID	RNAV (GPS) RWY 18				
Amdt #	1				

