


<b>Flight Procedure Tracking Form</b>		<b>Action:</b> FLIGHT CHECK	<b>Task Type:</b> IAP	<b>Date Open:</b> 03/09/2018	<b>Task #:</b> 2017112010260201001	<b>Request #:</b> 20171120102602
<b>Procedure:</b> RNAV (GPS) RWY 7 AMDT 1			<b>Airport ID:</b> KI19	<b>Airport:</b> GREENE COUNTY-LEWIS A JACKSON RGNL		<b>Reimbursable #:</b> NO
<b>City:</b> DAYTON	<b>ST:</b> OH	<b>GPS #:</b>	<b>Estimated Chart Date:</b> 11/08/2018		<b>FICO #:</b>	
<b>Fac ID:</b> N/A		<b>Fac. Type:</b>			<b>Specialist:</b> RALPH MILLER	
<b>Procedure Review</b>						
	<b>Rec'd</b>	<b>Rel'd</b>	<b>Full Name</b>	<b>Comments</b>		
<b>Lead:</b>	05/17/2018	07/19/2018	DAVID DANNER			
<b>QA:</b>	07/19/2018					
<b>Liaison:</b>						
<b>Procedure Comments:</b>			<b>Remark Type:</b> INFORMATION			
<p>UPDATED VGSI, MOVED WANKU, AND NINRE FIXES, NINRE ALT CHANGE, ADDED LNAV/VNAV FIX DISTANCES UPDATED, UPDATED MINIMUMS, UPDATED CIRCLING MINS, OBSTRUCTIONS UPDATED. PENDING DATA USED FOR BUILD.</p> <p>CONTACT LONNIE EVERHART (405) 954-4576</p>						

FIG

# RNAV (GPS) RWY 7

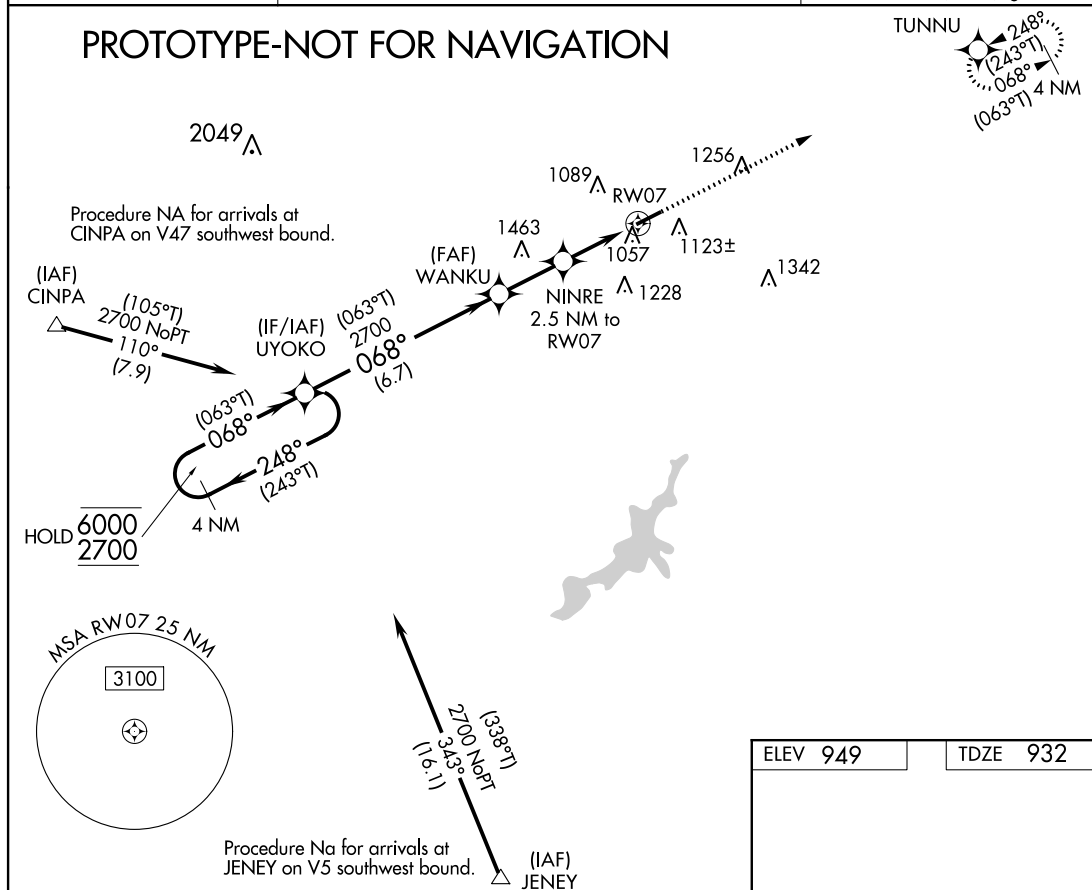
## GREENE COUNTY-LEWIS A JACKSON RGNL (I19)

**T** When local altimeter setting not received, use Dayton-Wright Brothers altimeter setting: increase LPV DA to 1235 feet; increase LNAV/VNAV DA to 1268 feet; increase all MDA 40 feet and LNAV visibility Cat C  $\frac{1}{8}$  SM. Rwy 7 helicopter visibility reduction below  $\frac{3}{4}$  NM NA. VDP and Baro-VNAV NA when using Dayton-Wright Brothers altimeter setting. For uncompensated Baro-VNAV systems, LNAV/VNAV NA below -16°C or above 54°C.

**MISSED APPROACH:**  
Climb to 2700 direct  
TUNNU and hold.

AWOS-3 <b>118.525</b>	COLUMBUS APP CON <b>118.85 269.275</b>	UNICOM <b>122.7 (CTAF) ①</b>
--------------------------	---	---------------------------------

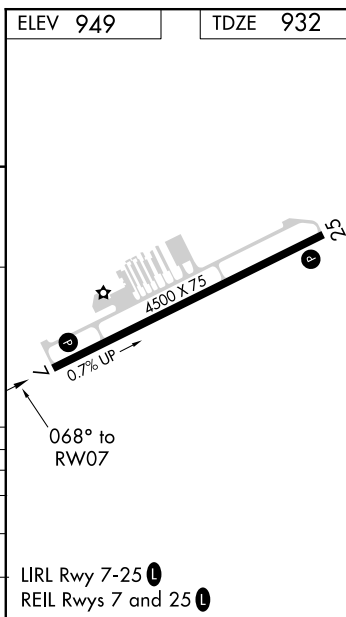
PROTOTYPE-NOT FOR NAVIGATION



**4 NM Holding Pattern**

VGSI and RNAV glidepath not coincident  
(VGSI Angle 3.50°/TCH 30).

CATEGORY	A	B	C	D
LPV DA	1205-1	273 (300-1)		NA
LNAV/ VNAV	1238-1	306 (300-1)		NA
LNAV MDA	1320-1	388 (400-1)	1320-1 $\frac{3}{8}$ 388 (400-1 $\frac{3}{8}$ )	NA
<b>C</b> CIRCLING	1480-1	531 (600-1)	1560-1 $\frac{3}{4}$ 611 (700-1 $\frac{3}{4}$ )	NA



GREENE COUNTY-LEWIS A JACKSON RGNL (I19)

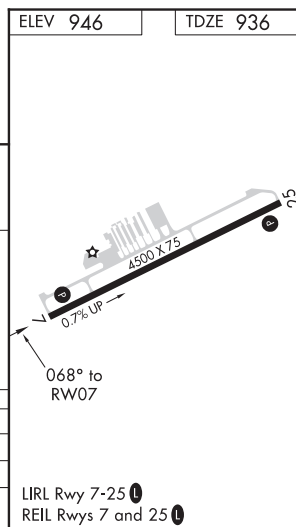
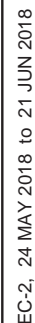
39°41'N-84°00'W

RNAV (GPS) RWY 7

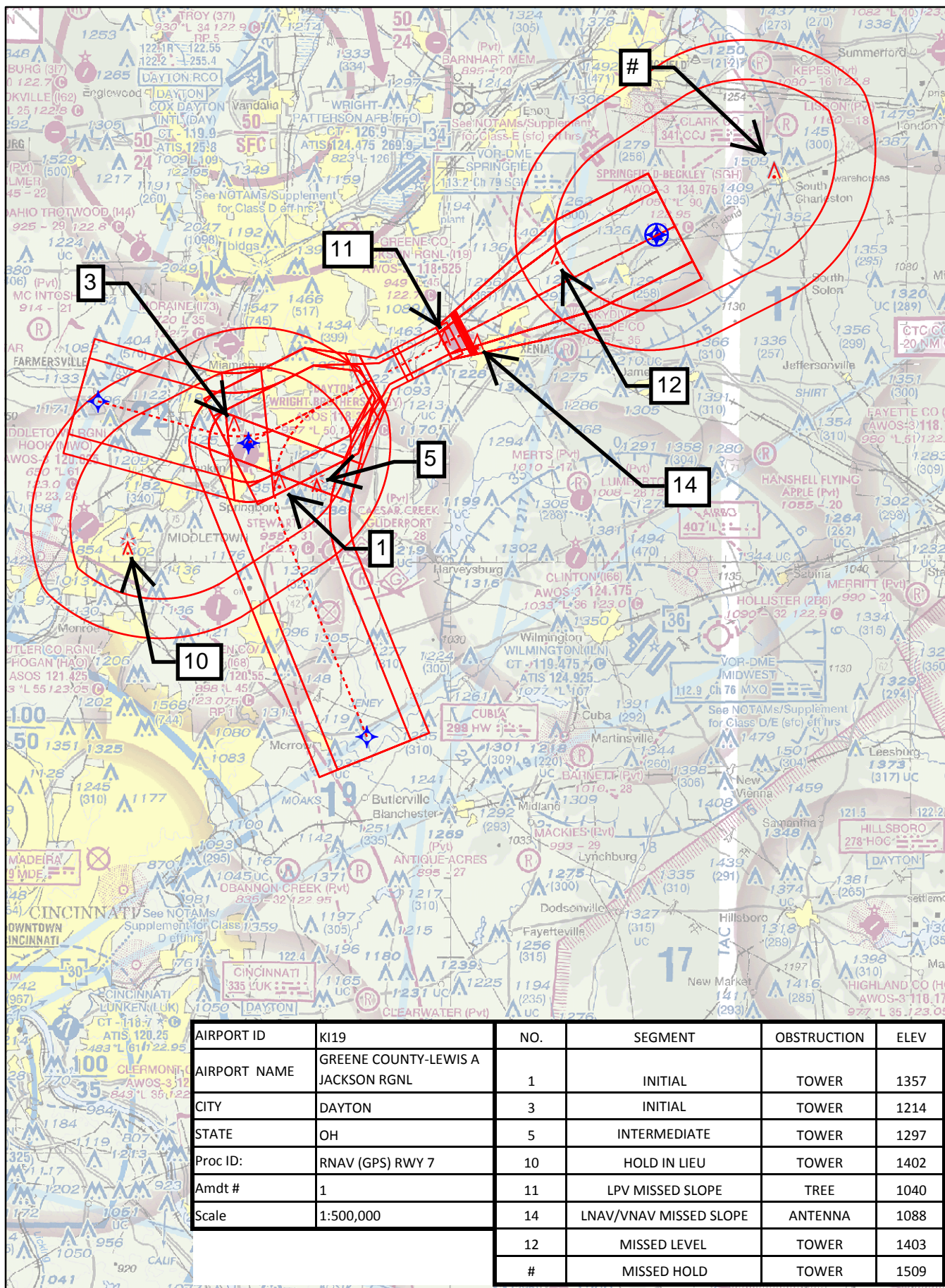
18032

GREENE COUNTY-LEWIS A JACKSON RGNL (I19)

**MISSED APPROACH:** Climb to 2700 direct TUNNU and hold.

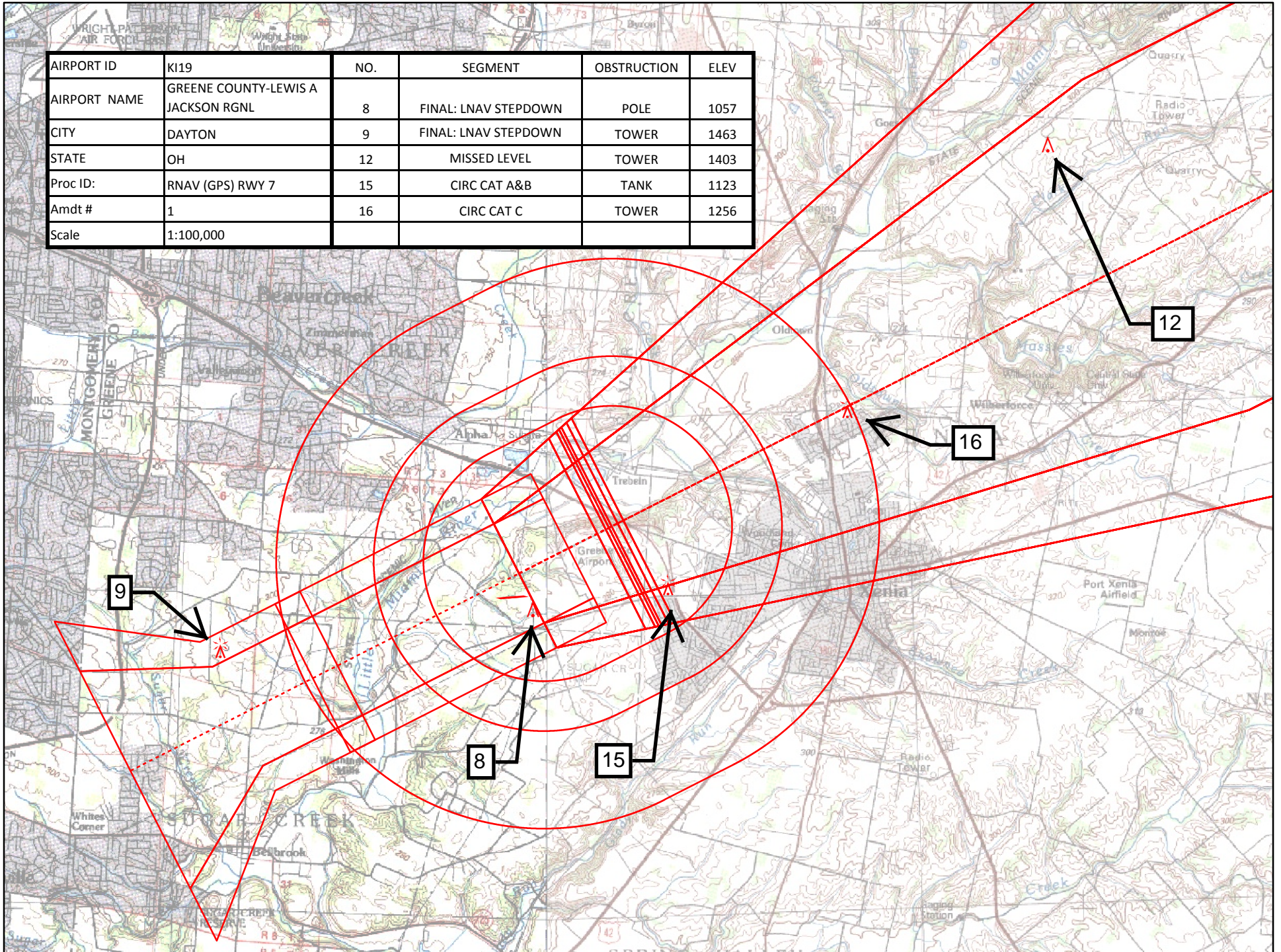
UNICOM  
122.7 (CTAF) **L**

NTY-LEWIS A JACKSON RGNL (I19)  
RNAV (GPS) RWY 7



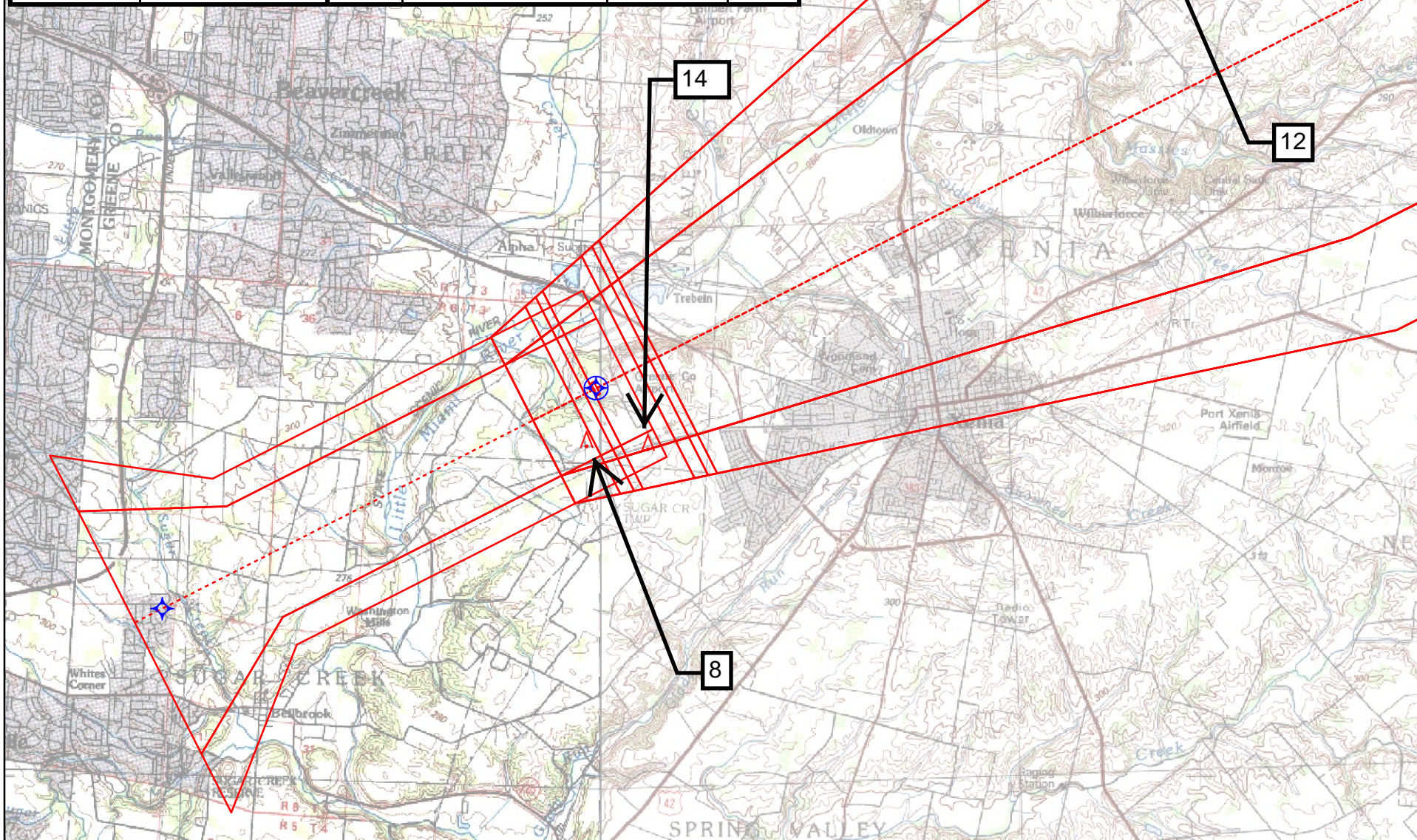


AIRPORT ID	K119	NO.	SEGMENT	OBSTRUCTION	ELEV
AIRPORT NAME	GREENE COUNTY-LEWIS A JACKSON RGNL	8	FINAL: LNAV STEPDOWN	POLE	1057
CITY	DAYTON	9	FINAL: LNAV STEPDOWN	TOWER	1463
STATE	OH	12	MISSED LEVEL	TOWER	1403
Proc ID:	RNAV (GPS) RWY 7	15	CIRC CAT A&B	TANK	1123
Amdt #	1	16	CIRC CAT C	TOWER	1256
Scale	1:100,000				





AIRPORT ID	KI19	NO.	SEGMENT	OBSTRUCTION	ELEV
AIRPORT NAME	GREENE COUNTY-LEWIS A JACKSON RGNL	8	FINAL: LNAV/VNAV	POLE	1057
CITY	DAYTON	14	MISSED SLOPE	ANTENNA	1088
STATE	OH	12	MISSED LEVEL	TOWER	1403
Proc ID:	RNAV (GPS) RWY 7				
Amdt #	1				
Scale	1:100,000				





AIRPORT ID	K119	NO.	SEGMENT	OBSTRUCTION	ELEV
AIRPORT NAME	GREENE COUNTY-LEWIS A JACKSON RGNL	7	FINAL: LPV	TREE	978
CITY	DAYTON	11	MISSSED SLOPE	TREE	1040
STATE	OH	12	MISSSED LEVEL	TOWER	1403
Proc ID:	RNAV (GPS) RWY 7				
Amdt #	1				
Scale	1:100,000				

