

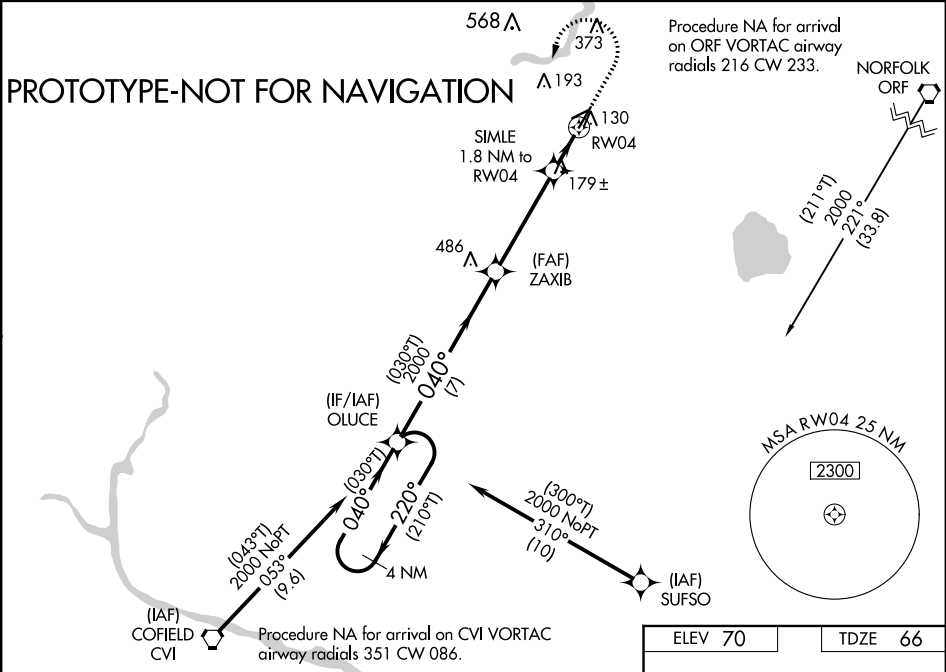
Flight Procedure Tracking Form		Action: AMENDMENT	Task Type: IAP	Date Open: 03/19/2018	Task #: 2017111614110302005	Request #: 20171116141103
Procedure: RNAV (GPS) RWY 4 AMDT 4A			Airport ID: KSFQ	Airport: SUFFOLK EXECUTIVE		Reimbursable #: NO
City: SUFFOLK	ST: VA	GPS #:	Estimated Chart Date: 11/08/2018		FICO #: 1213797	
Fac ID: N/A		Fac. Type:		Specialist: MICHAEL HARRIS		
Procedure Review						
	Rec'd	Rel'd	Full Name	Comments		
Lead:	03/22/2018	08/09/2018	ANDI LAU	Digitally signed by		
QA:	08/09/2018	06/13/2018	ANDI LAU	4	8/10CTabaka	WARDELL HENNING
Liaison:	06/13/2018	06/13/2018	MARY MCDONALD	Nov 05, 2018		
Procedure Comments:			Remark Type: INFORMATION			
<p>8/9/2018: THIS IS AN UPDATED COPY OF THE FORM DEVELOPED ON 04/24/2018:</p> <p>1. CHANGED PUBLICATION REQUIRED EFFECTIVE DATE FROM ROUTINE TO HARD (11/08/2018).</p> <p>AMEND PROCEDURE TO CLEAR NOTAM 7/1445.</p> <p>PENDING DATA USED FOR KSFQ.</p> <p>CONTACT LONNIE EVERHART 405.954.4576.</p>						

WAAS CH 65824 W04A	APP CRS 040°	Rwy Idg TDZE Apt Elev	5007 66 70
--	------------------------	-----------------------------	---------------------------------------

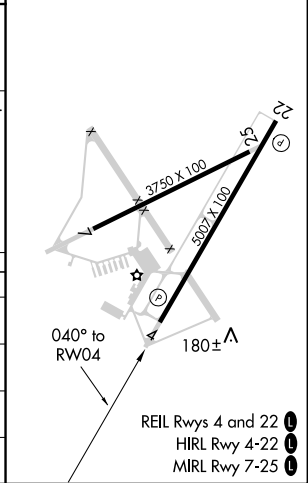
RNAV (GPS) RWY 4
SUFFOLK EXECUTIVE (SFQ)

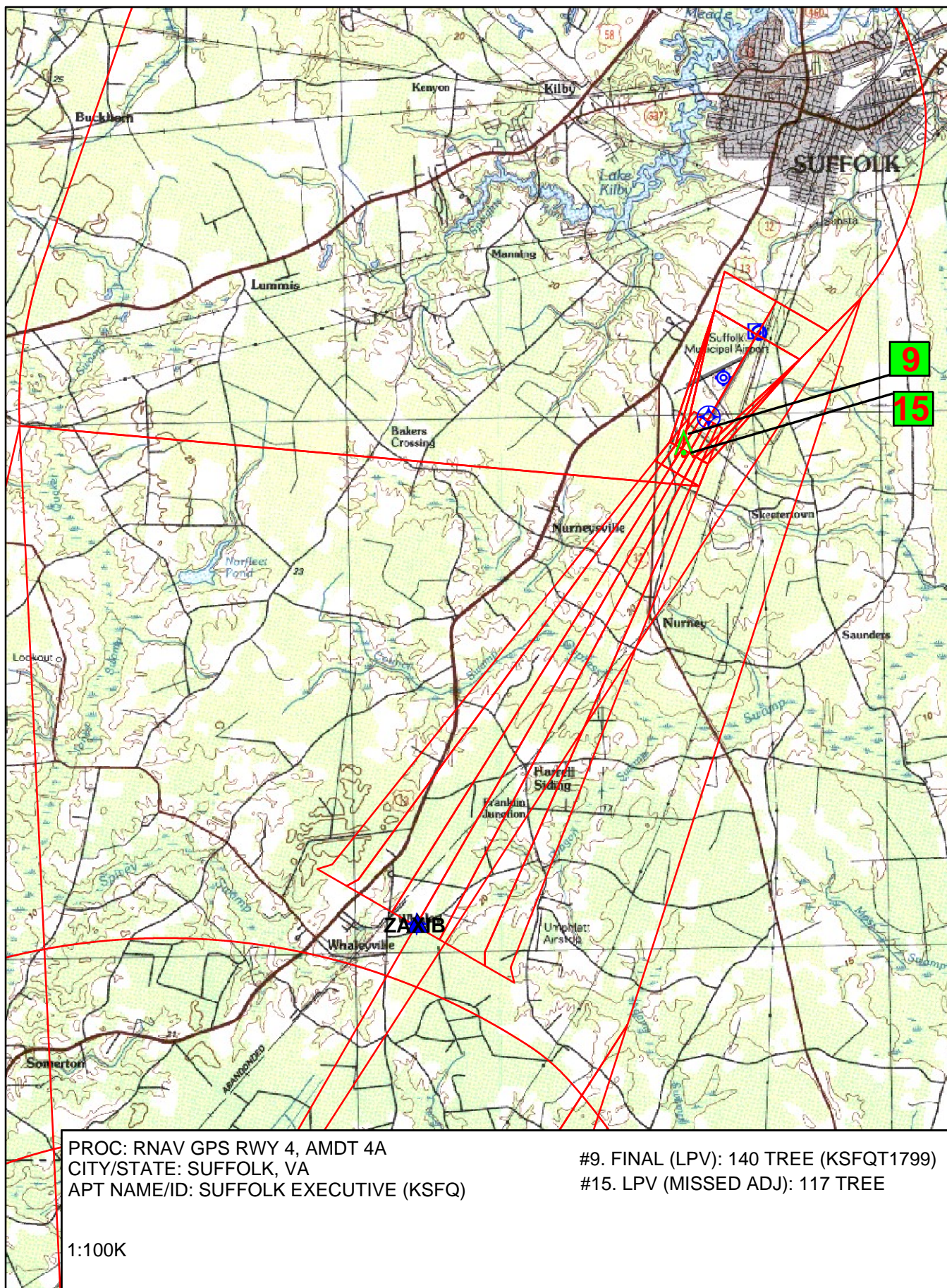
RNP APCH. <div>▼ For uncompensated Baro-VNAV systems, LNAV/VNAV NA below -15°C or above 54°C.</div>	MISSED APPROACH: Climb to 600 then climbing left turn to 2000 direct OLUCE and hold.
--	--

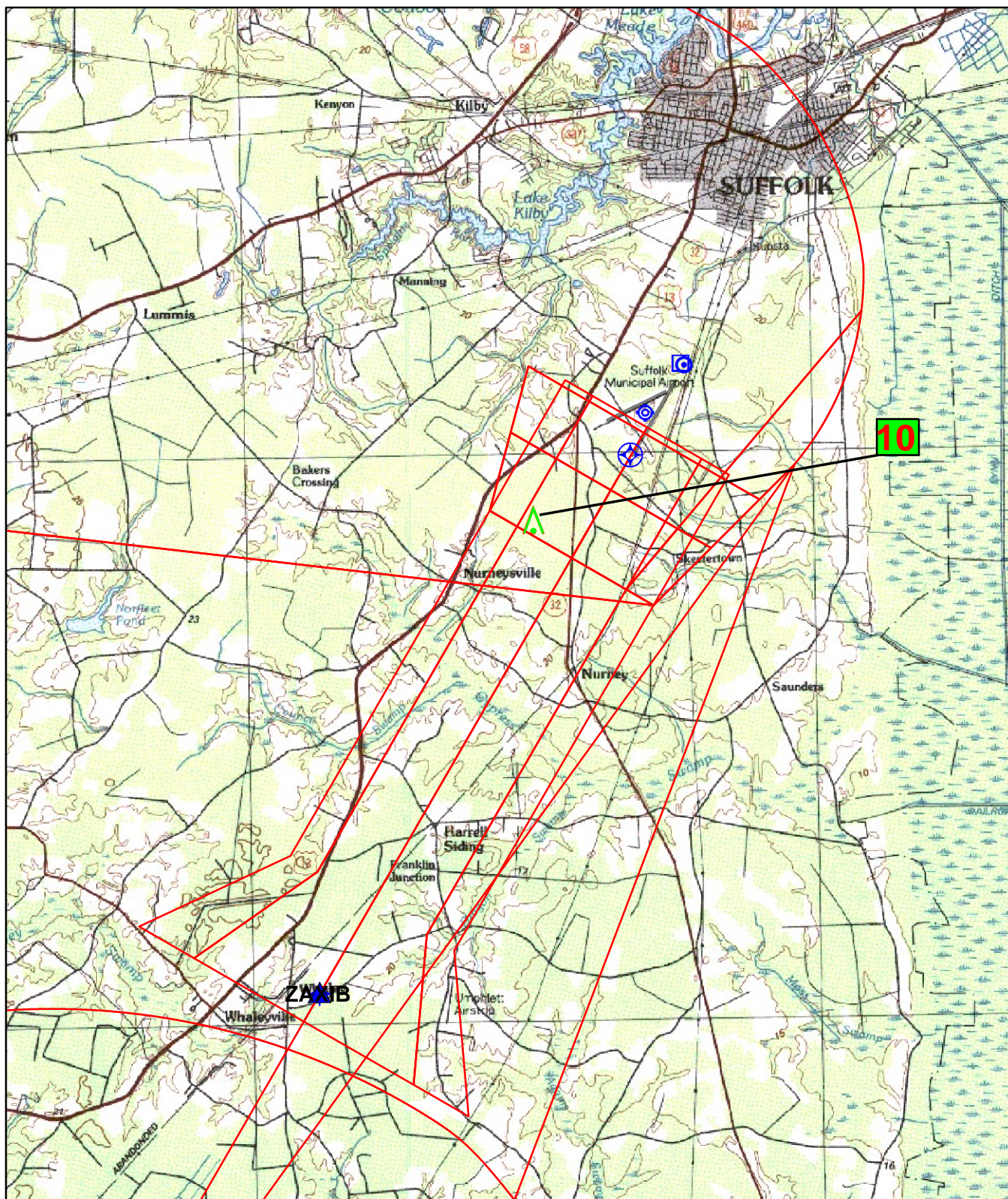
AWOS-3 119.375	NORFOLK APP CON 127.9 269.425	GCO 135.075	UNICOM 122.7 (CTAF) 0
--------------------------	---	-----------------------	---------------------------------



	VGSI and RNAV glidepath not coincident (VGSI Angle 3.00/TCH 39).		600	2000	OLUCE
	4 NM Holding Pattern		↑	↶	✧
	OLUCE		ZAXIB		
	2000 ← 220° (210°T)		2000		
	GP 3.00° TCH 45		2000		
	040° (030°T)		040° (030°T)		
	7 NM		4.1 NM	0.7	1.1
CATEGORY	A	B	C	D	
LPV DA		322-7/8	256 (300-7/8)		
LNAV/VNAV DA		474-1 3/8	408 (500-1 3/8)		
LNAV MDA		440-1	374 (400-1)		
CIRCLING	500-1 430 (500-1)	560-1 490 (500-1)	680-1 3/4 610 (700-1 3/4)	680-2 610 (700-2)	







PROC: RNAV GPS RWY 4, AMDT 4A
 CITY/STATE: SUFFOLK, VA
 APT NAME/ID: SUFFOLK EXECUTIVE (KSFQ)

#10. FINAL (LNAV/VNAV): 174 TREE

1:100K

