

<b>Flight Procedure Tracking Form</b>		<b>Action:</b> FLIGHT CHECK	<b>Task Type:</b> IAP	<b>Date Open:</b> 12/15/2017	<b>Task #:</b> 2017111316110302002	<b>Request #:</b> 20171113161103
<b>Procedure:</b> RNAV (GPS) RWY 12 AMDT 1			<b>Airport ID:</b> KHAF	<b>Airport:</b> HALF MOON BAY		<b>Reimbursable #:</b> NO
<b>City:</b> HALF MOON BAY	<b>ST:</b> CA	<b>GPS #:</b>	<b>Estimated Chart Date:</b> 02/28/2019		<b>FICO #:</b> 1221705	
<b>Fac ID:</b> N/A		<b>Fac. Type:</b>		<b>Specialist:</b> JOSEPH HILLEY		
<b>Procedure Review</b>						
	<b>Rec'd</b>	<b>Rel'd</b>	<b>Full Name</b>	<b>Comments</b>		
<b>Lead:</b>	09/07/2018	11/26/2018	JACOB POWERS	<div style="border: 1px solid black; padding: 5px; display: inline-block;"> <b>APPROVED</b>  <small>By Steven M Barnett at 10:31 am, Dec 31, 2018</small> </div> <div style="text-align: right; margin-top: -20px;"> <b>QUALITY</b>  <b>23</b>  <b>CHECKED</b> </div>		
<b>QA:</b>	11/26/2018	11/30/2018	TRACEY STILES			
<b>Liaison:</b>	11/30/2018	11/30/2018	MARY MCDONALD			
<b>Procedure Comments:</b>			<b>Remark Type:</b> INFORMATION			
<p>ACTIVE DATA USED.</p> <p>FLT CHK: 4D ACCURACY CODE EVALUATION REQUESTED, SEE 8260-9 (OBST #8): 372954.00N/1222957.00W 292 MSL, TOWER.</p> <p>CONTACT DAVE DANNER 405-954-5077</p> <p>12/27/18: THIS IS A CORRECTED COPY OF THE FORM APPROVED ON 12/10/2018.</p> <p>1. FUJCE TO JEVXY DISTANCE CHANGED FROM 6.30 TO 6.23 IN TERMINAL ROUTES.</p>						

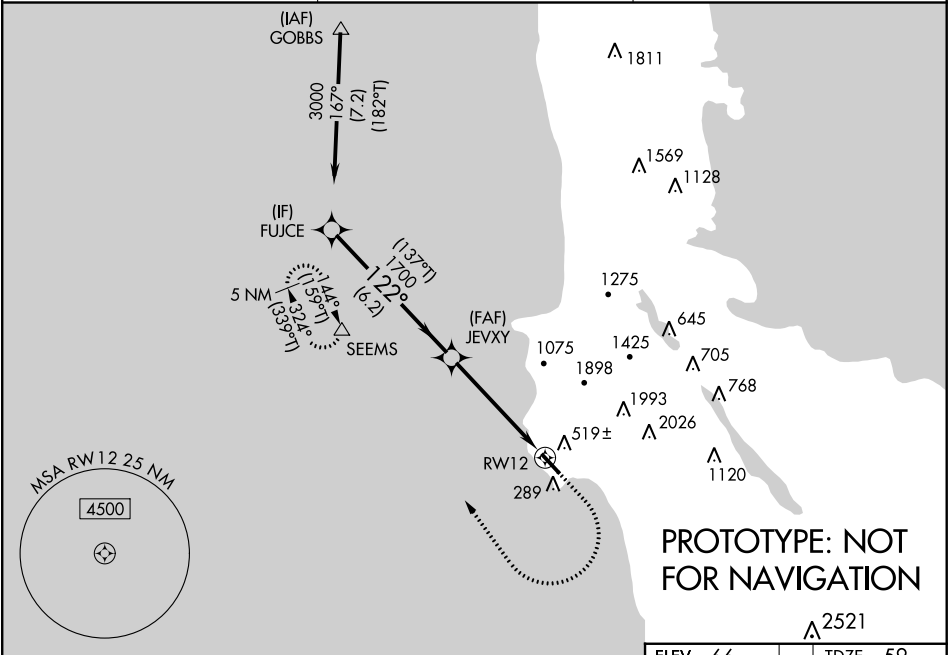
WAAS CH <b>99742</b> <b>W12A</b>	APP CRS <b>122°</b>	Rwy Idg <b>4248</b> TDZE <b>59</b> Apt Elev <b>66</b>
--	------------------------	---

RNAV (GPS) RWY 12

HALF MOON BAY (HAF)

RNP APCH	MISSED APPROACH: Climb to 700 then climbing right turn to 4000 direct SEEMS and hold, continue climb-in-hold to 4000.
Circling NA east of Rwy 12-30. Rwy 12 helicopter visibility reduction below ¾ SM NA. For uncompensated Baro-VNAV systems, LNAV/VNAV NA below -15° C or above 54° C.	

AWOS <b>127.275</b>	NORCAL APP CON <b>135.1 307.2</b>	UNICOM <b>122.8 (CTAF) 0</b>
------------------------	--------------------------------------	---------------------------------



VGSi and descent angles not coincident (VGSi Angle 3.00/TCH 24).		700	4000	SEEMS
FUJCE		1700		
JEVXY				
RWY 12				
GP 3.10° TCH 40				
6.3 NM		3.8 NM	1 NM	
CATEGORY	A	B	C	D
LPV DA		360-7/8	301 (300-7/8)	
LNAV/VNAV DA		652-1 3/4	593 (600-1 3/4)	
LNAV MDA	660-1	601 (600-1)	660-1 3/4	601 (600-1 3/4)
CIRCLING	660-1	594 (600-1)	660-1 3/4 594 (600-1 3/4)	660-2 594 (600-2)

ELEV 66

TDZE 59

122° to RWY 12

3000 X 150

0.7% UP

REIL Rwy 30

MIRL Rwy 12-30

OLD

HALF MOON BAY, CALIFORNIA

AL-6675 (FAA)

16035

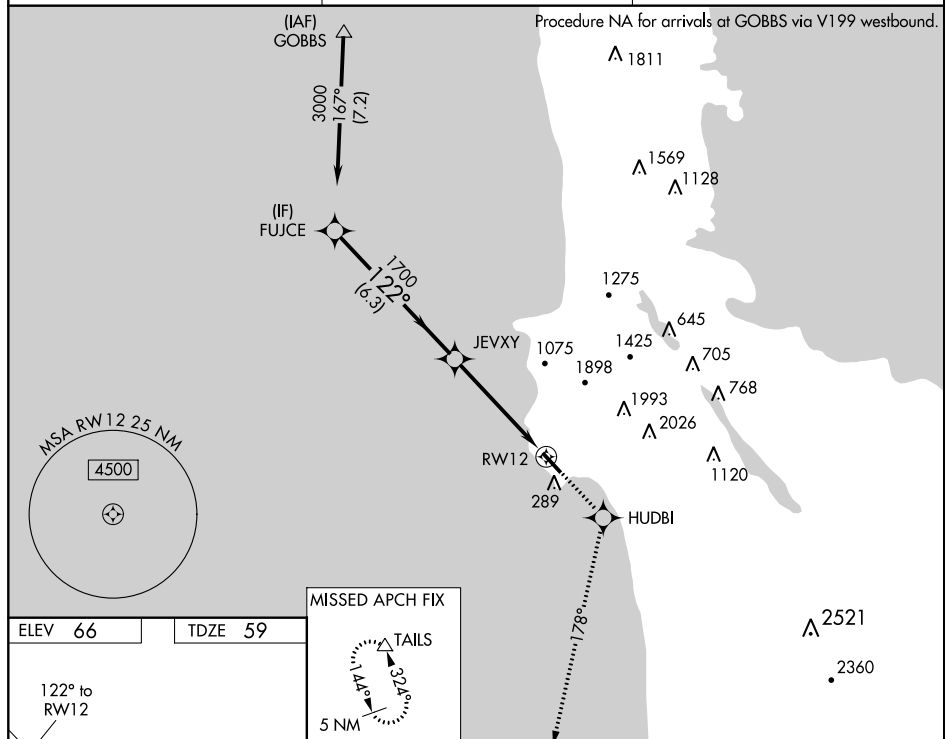
WAAS CH <b>93802</b> <b>W12A</b>	APP CRS <b>122°</b>	Rwy ldg 4248 TDZE 59 Apt Elev 66
--	------------------------	---

# RNAV (GPS) Z RWY 12

HALF MOON BAY (HAF)

<b>NA</b> DME/DME RNP-0.3 NA. When local altimeter setting not received, use San Francisco Intl altimeter setting. Helicopter visibility reduction below ¾ SM NA.	MISSED APPROACH: Climb to 6000 direct HUDBI and via 178° track to TAILS and hold, continue climb-in-hold to 6000.
--	---

AWOS <b>127.275</b>	NORCAL APP CON <b>135.1 307.2</b>	UNICOM <b>122.8 (CTAF)</b>
------------------------	--------------------------------------	-------------------------------



SW-2, 11 OCT 2018 to 08 NOV 2018

SW-2, 11 OCT 2018 to 08 NOV 2018

VGSI and RNAV glidepath not coincident (VGSI Angle 3.00/TCH 24).		6000	HUDBI	178° tr	TAILS
FUJCE		3000	JEVXY	1700	RW12
Procedure Turn NA		GP 3.10°	TCH 40	6.3 NM	4.8 NM
CATEGORY	A	B	C	D	
LPV DA	395-1¼	336 (400-1¼)	NA		
SAN FRANCISCO ALTIMETER SETTING MINIMUMS					
LPV DA	423-1¼	364 (400-1¼)	NA		

HALF MOON BAY, CALIFORNIA  
Orig-B 27JUN13

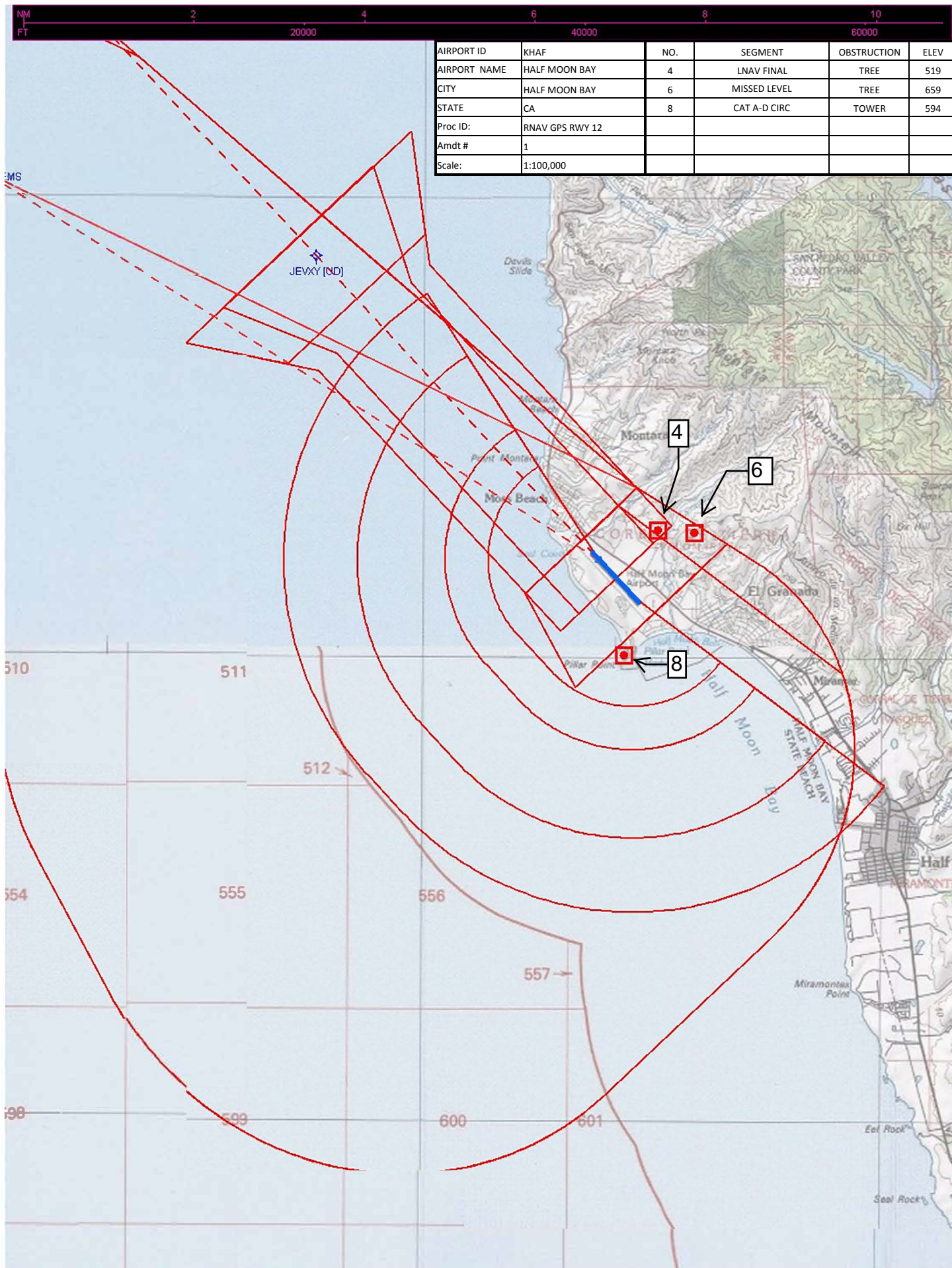
37°31'N-122°30'W

# RNAV (GPS) Z RWY 12

HALF MOON BAY (HAF)











AIRPORT ID	KHAF	NO.	SEGMENT	OBSTRUCTION	ELEV
AIRPORT NAME	HALF MOON BAY		LNAV/VNAV FINAL	ASC	
CITY	HALF MOON BAY	5	MISSED SLOPE	TREE	172
STATE	CA	6	MISSED LEVEL	TREE	659
Proc ID:	RNAV GPS RWY 12				
Amot #	1				
Scale	1:100,000				

