


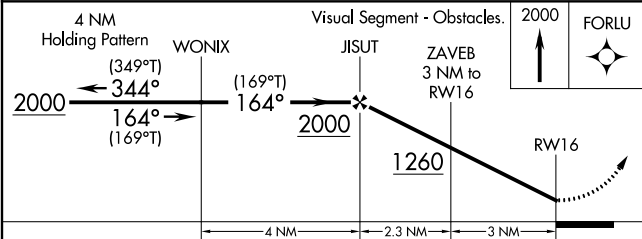
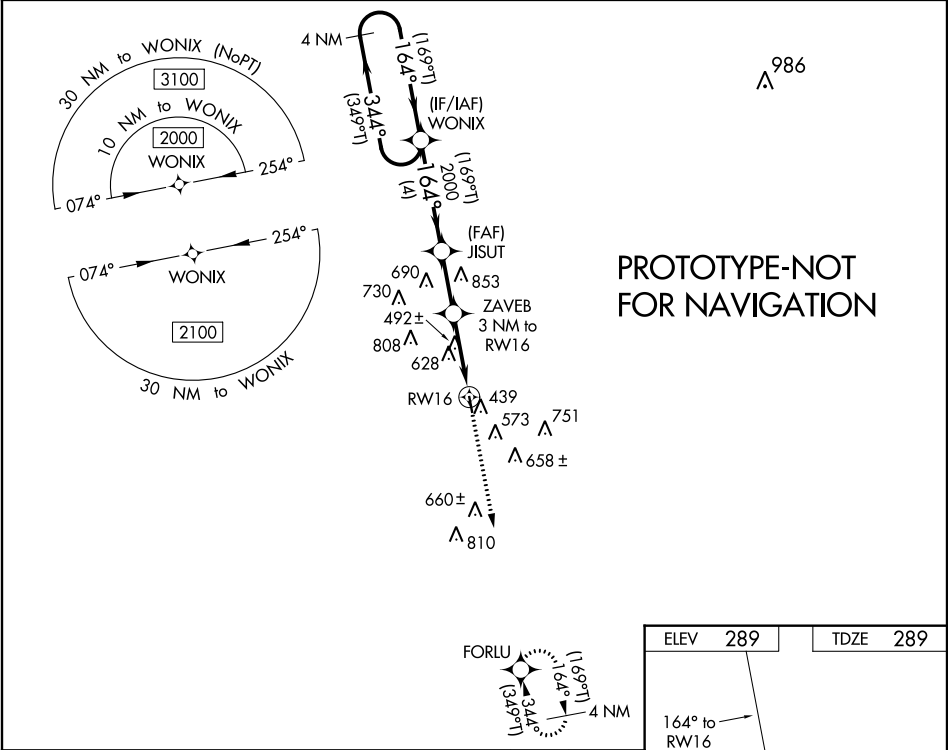
<b>Flight Procedure Tracking Form</b>		<b>Action:</b> FLIGHT CHECK	<b>Task Type:</b> IAP	<b>Date Open:</b> 11/08/2017	<b>Task #:</b> 2017110839362001001	<b>Request #:</b> 20171108393620
<b>Procedure:</b> RNAV (GPS) RWY 16 AMDT 0B			<b>Airport ID:</b> K2R9	<b>Airport:</b> KARNES COUNTY		<b>Reimbursable #:</b> NO
<b>City:</b> KENEDY	<b>ST:</b> TX	<b>GPS #:</b>	<b>Estimated Chart Date:</b> 07/19/2018		<b>FICO #:</b>	
<b>Fac ID:</b> N/A		<b>Fac. Type:</b>			<b>Specialist:</b> MICHAEL NOLAN	
<b>Procedure Review</b>						
	<b>Rec'd</b>	<b>Rel'd</b>	<b>Full Name</b>	<b>Comments</b>		
<b>Lead:</b>	12/05/2017	03/26/2018	MARK ADAMS	<div style="text-align: center;">  </div>		
<b>QA:</b>	03/26/2018					
<b>Liaison:</b>						
<b>Procedure Comments:</b>			ENROUTE-NON	<b>Remark Type:</b> INFORMATION		
<p>AMENDED PROCEDURE TO CANCEL NOTAM !FDC 7/3969.          ACTIVE DATA USED FOR K2R9 AIRPORT AND RUNWAY DATA.          CONTACT: LONNIE EVERHART: 405-954-4576</p>						

WAAS CH <b>87125</b> <b>W16A</b>	APP CRS <b>164°</b>	Rwy Idg TDZE Apt Elev	<b>3218</b> <b>289</b> <b>289</b>
--	------------------------	-----------------------------	---

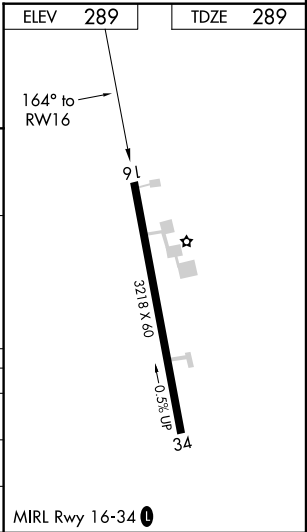
RNAV (GPS) RWY 16

KARNES COUNTY (2R9)

RNP APCH		MISSED APPROACH: Climb to 2000 direct FORLU and hold.
<div><div><div>V</div><div>NA</div></div></div> <div>Procedure NA at night. Use Pleasanton altimeter setting; when not received, use Victoria altimeter setting and increase all MDA 40 feet. Rwy 16 helicopter visibility reduction below 1 SM NA.</div>		
PLEASANTON AWOS-3 118.575	HOUSTON CENTER 134.6 322.5	UNICOM 123.0 (CTAF) 0



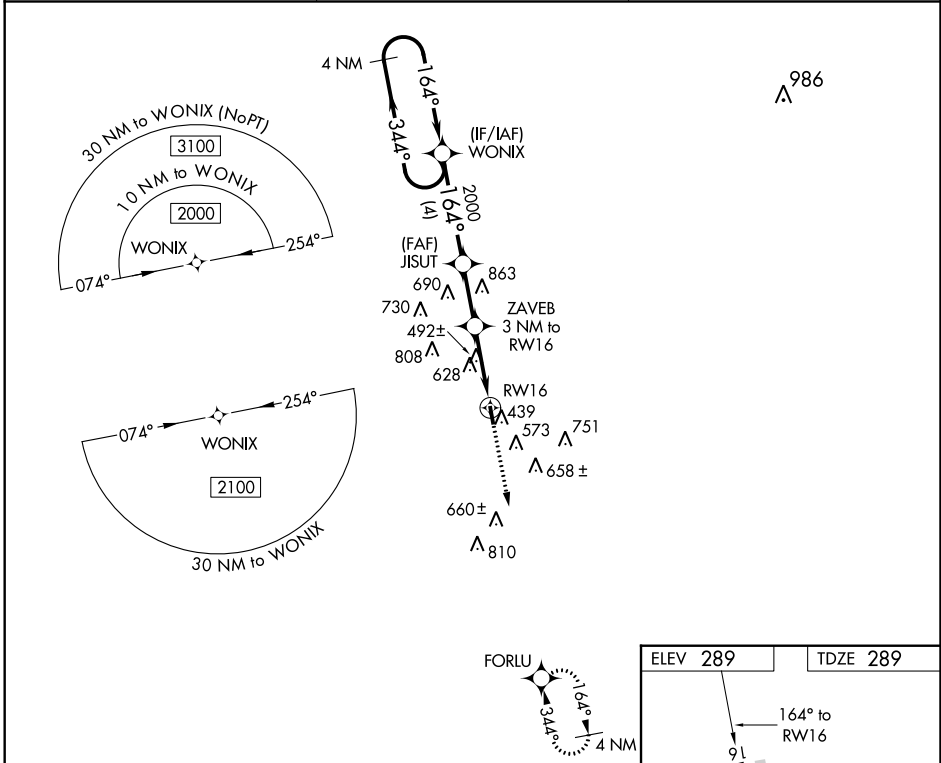
CATEGORY	A	B	C	D
LP MDA	860-1	571 (600-1)		NA
LNAV MDA	1040-1 751 (800-1)	1040-1¼ 751 (800-1¼)		NA
CIRCLING	1040-1 751 (800-1)	1040-1¼ 751 (800-1¼)		NA



WAAS CH <b>87125</b> <b>W16A</b>	APP CRS <b>164°</b>	Rwy Idg TDZE Apt Elev	<b>3218</b> <b>289</b> <b>289</b>
--	------------------------	-----------------------------	---

▼ Use Pleasanton altimeter setting; when not received, use Victoria altimeter setting and increase all MDA 40 feet. DME/DME RNP-0.3 NA. Procedure NA at night.  
 ▲ NA Visibility reduction by helicopters NA.

PLEASANTON AWOS-3 <b>118.575</b>	HOUSTON CENTER <b>134.6 322.5</b>	UNICOM <b>123.0 (CTAF) 0</b>
-------------------------------------	--------------------------------------	---------------------------------



4 NM Holding Pattern	WONIX	JISUT	ZAVEB 3.0 NM to RWY 16	2000	FORLU
2000	←344°	→164°	→2000	→1260	→RWY 16
	←4 NM	←2.3 NM	←3 NM		
CATEGORY	A	B	C	D	
LP MDA	860-1	571 (600-1)		NA	
INAV MDA	1040-1	1040-1¼		NA	
	751 (800-1)	751 (800-1¼)			
CIRCLING	1040-1	1040-1¼		NA	
	751 (800-1)	751 (800-1¼)			

