

<b>Flight Procedure Tracking Form</b>		<b>Action:</b> FLIGHT CHECK	<b>Task Type:</b> IAP	<b>Date Open:</b> 11/03/2017	<b>Task #:</b> 2017110328415301002	<b>Request #:</b> 20171103284153
<b>Procedure:</b> RNAV (GPS)-A AMDT 1			<b>Airport ID:</b> PAAQ	<b>Airport:</b> WARREN "BUD" WOODS PALMER MUNI		<b>Reimbursable #:</b> NO
<b>City:</b> PALMER	<b>ST:</b> AK	<b>GPS #:</b>	<b>Estimated Chart Date:</b> 09/13/2018			<b>FICO #:</b>
<b>Fac ID:</b> N/A		<b>Fac. Type:</b>			<b>Specialist:</b> LEO PALMER	
<b>Procedure Review</b>						
	<b>Rec'd</b>	<b>Rel'd</b>	<b>Full Name</b>	<b>Comments</b>		
<b>Lead:</b>	02/14/2018			<div>QUALITY 41 CHECKED</div>		
<b>QA:</b>						
<b>Liaison:</b>						
<b>Procedure Comments:</b> ENROUTE-NON						
<b>Remark Type:</b> INFORMATION						
MAGVAR UPDATED: OLD: 20E/2010 NEW: 16E/2020  PENDING DATA USED FOR PAAQ AIRPORT AND RUNWAYS.  CONTACT: DEZ SILAGYI (405)954-5340						

<b>FIPC BASIC FORM</b>							
<b>PROCEDURE:</b> RNAV (GPS)-A 1			<b>AIRPORT NAME:</b> WARREN "BUD" WOODS PALMER		<b>AIRPORT ID:</b> PAAQ	<b>SPECIAL CONTROL NO:</b> KG-06-062-18	
<b>FAC ID:</b> PAAQA.01		<b>CITY:</b> PALMER			<b>ST:</b> AK	<b>ORIG CHART DATE:</b> 09/13/2018	
<b>DFL TYPE:</b> PROC/G	<b>THIRD PARTY:</b> <input type="checkbox"/> YES	<b>EST. TIME ON SITE:</b> 0.5	<b>REIMB. NUMBER:</b>		<b>PTS TASK ID:</b> 2017110328415301002		
<b>PREFLIGHT NOTES</b>							
<b>REVIEWER:</b>					<b>DATE:</b>		
<b>COMMENTS:</b>					<b>CHECK ONE:</b>		
					<input type="checkbox"/> FLT CK REQ <input type="checkbox"/> NFCR <input type="checkbox"/> REJECT		
							<b>YES</b>
					<b>CPV COMPLETE?</b>		<b>X</b>
<b>PROCEDURE RESULTS</b>							
<b>INSPECTION DATE:</b> 06/14/2018		<b>CREW #:</b> VN888	<b>N #:</b>	<b>INSTRUMENT PROCEDURE STATUS:</b> <input type="checkbox"/> SAT <input type="checkbox"/> SAT W/CHANGES <input checked="" type="checkbox"/> UNSAT		<b>ARINC CODING:</b> <input type="checkbox"/> SAT <input type="checkbox"/> SAT/GOLD <input type="checkbox"/> UNSAT	
<b>FLIGHT INSPECTOR SIGNATURE:</b> elizabeth whaley @ 06/14/2018 13:53			<b>PRINTED NAME:</b> AVN, CREWMEMBER 2				<b>NOTAM INITIATED?</b> <input type="checkbox"/> YES <input checked="" type="checkbox"/> NO
<b>FLIGHT INSPECTOR REMARKS:</b> Missed altitude has you climb to 4500, but then hold at 4000. Package shows 4500 for the holding altitude.							
<b>IN-FLIGHT OBSTACLE REPORT</b>							
<b>OBSTRUCTION ID #:</b>	<b>COORDINATES OR LOCATION:</b>		<b>GNSS ALTITUDE (MSL):</b>		<b>BAROMETRIC ALTITUDE (MSL):</b>		<b>HEIGHT ABOVE GROUND LEVEL:</b>

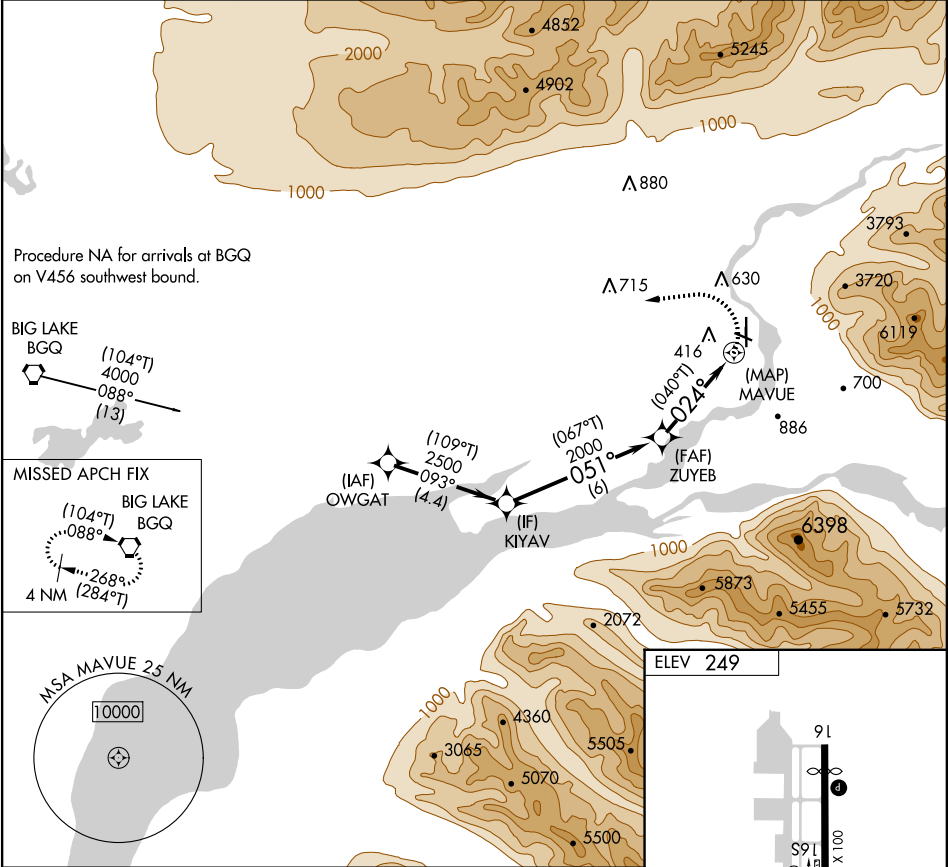
APP CRS <b>024°</b>	Rwy Idg TDZE Apt Elev	<b>N/A</b> <b>N/A</b> <b>249</b>
------------------------	-----------------------------	--

**RNAV (GPS)-A**

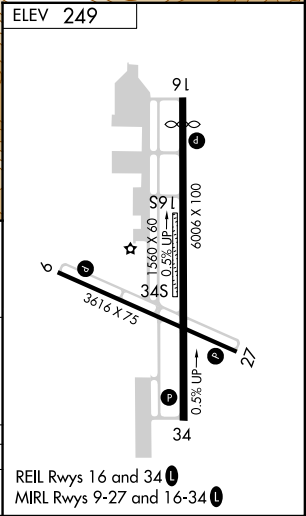
WARREN "BUD" WOODS PALMER (PAQ) (PAAQ)

RNP APCH	MISSED APPROACH: Climbing left turn to 4500 direct BGO VORTAC and hold.
Circling NA northeast of Rwy 16-28. Procedure NA at night.	

ASOS <b>134.75</b>	ANCHORAGE APP CON <b>118.6 290.5</b>	PALMER RADIO <b>123.6 (CTAF) 0 122.4</b>
-----------------------	---	---



Procedure Turn NA	KIYAV 2500	ZUYEB 2000	MAVUE	4500 BGO
	(106.7°T) 051°	(104.0°T) 024°		
	6 NM	4 NM		
CATEGORY	A	B	C	D
CIRCLING	860-1¼ 611 (700-1¼)	940-1¼ 691 (700-1¼)	1300-3	1051 (1100-3)



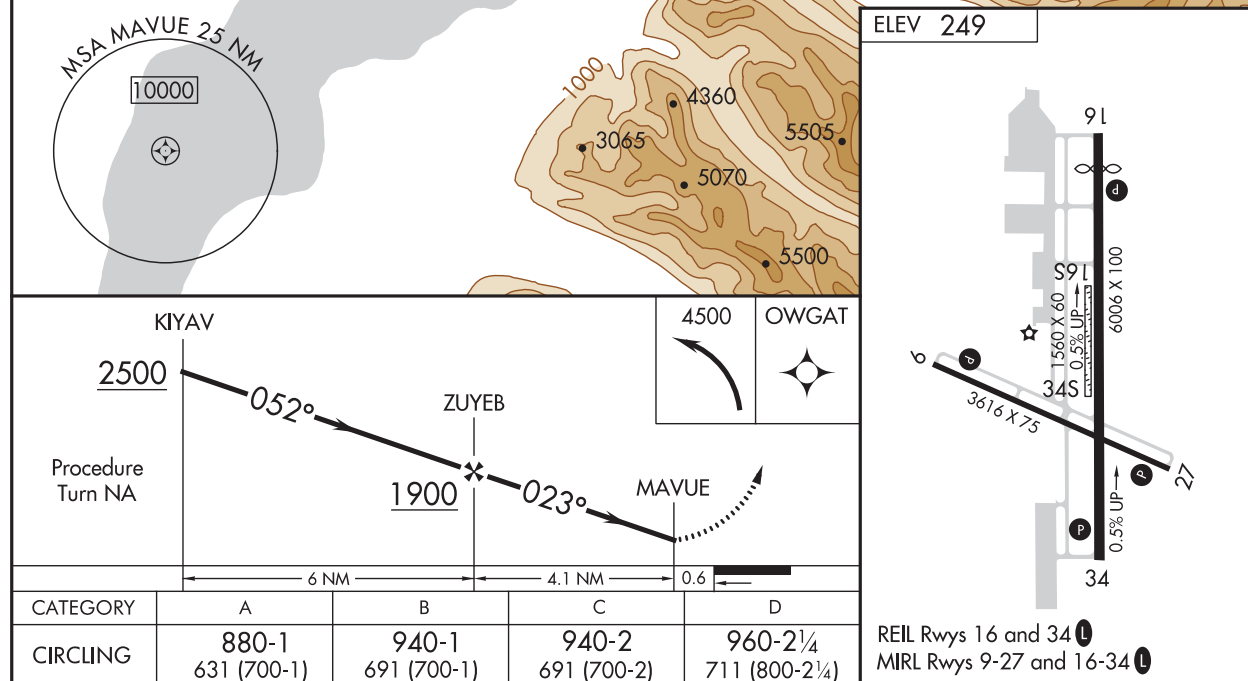
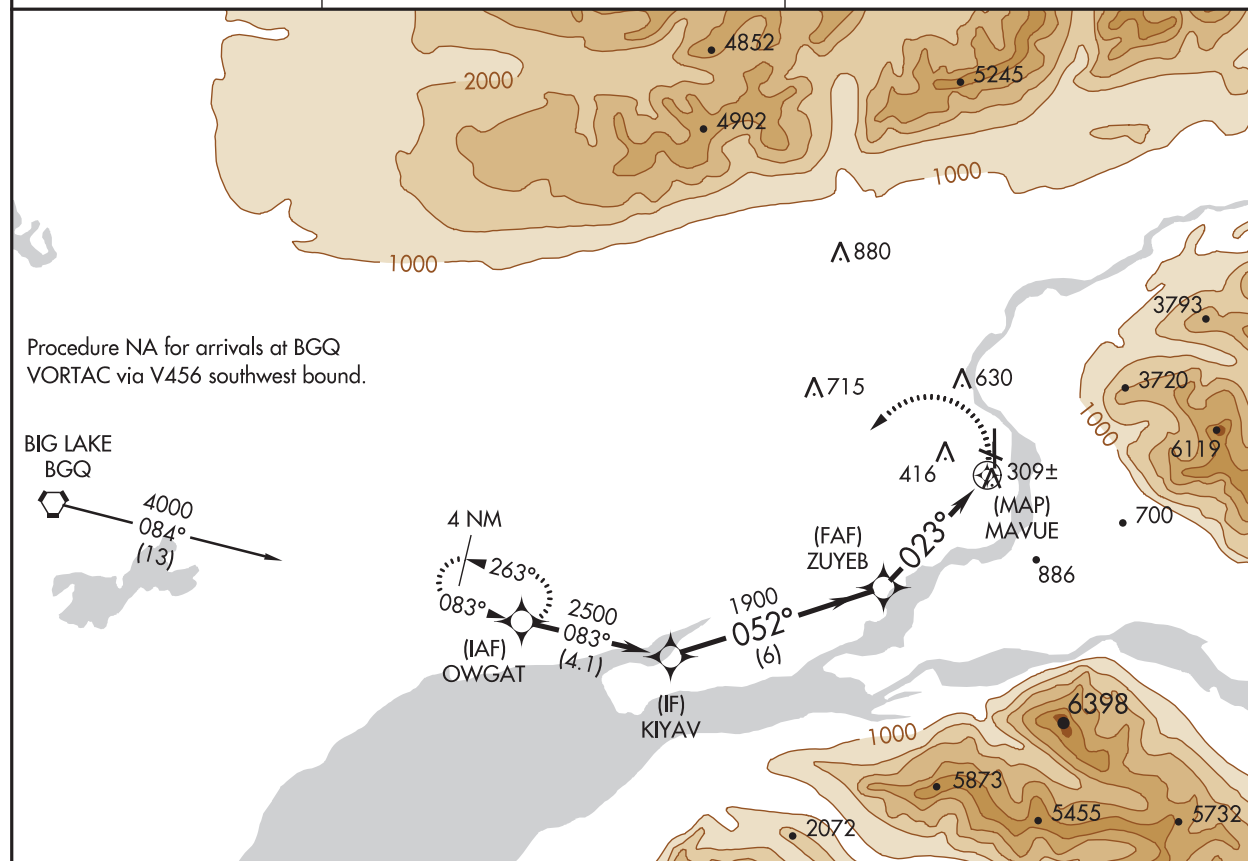
APP CRS <b>023°</b>	Rwy Idg <b>N/A</b>
TDZE <b>N/A</b>	Apt Elev <b>249</b>

**OLD****RNAV (GPS)-A**

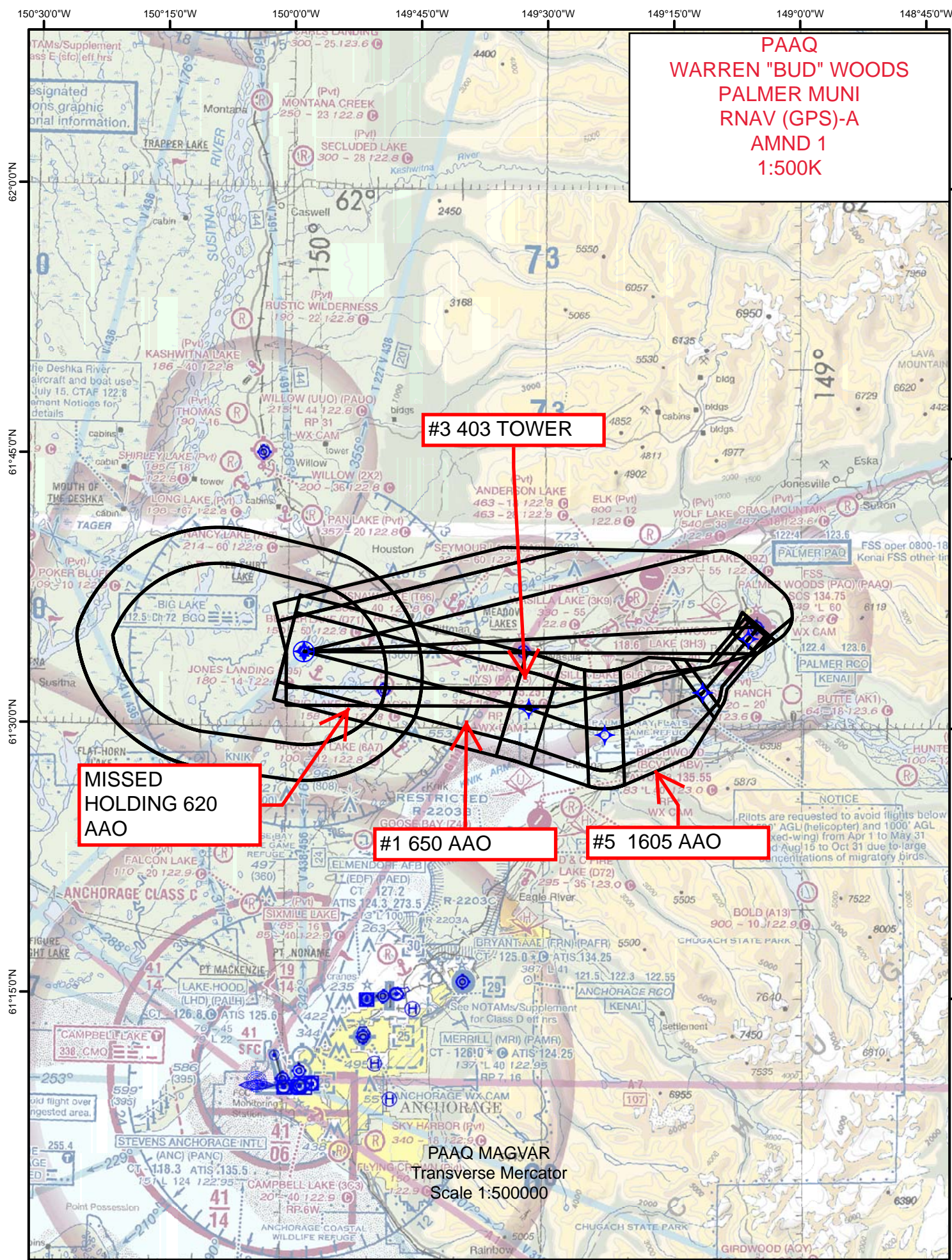
PALMER BUDDY WOODS MUNI (PAQ) (PAAQ)

<p><b>⚠</b> Circling NA northeast of Rwy 16-27. DME/DME RNP-0.3 NA. When local altimeter setting not received, use Wasilla altimeter setting and increase all MDAs 60 feet. Procedure NA at night. Rwy 9, 27, 16, 16R, 34, 34L, helicopter visibility reduction below 1 SM NA.</p>	<p><b>MISSED APPROACH:</b> Climbing left turn to 4500 direct OWGAT and hold, continue climb in hold to 4500.</p>
--	--

ASOS <b>134.75</b>	ANCHORAGE APP CON <b>118.6 290.5</b>	PALMER RADIO <b>123.6 (CTAF) 122.4</b>
-----------------------	---	---





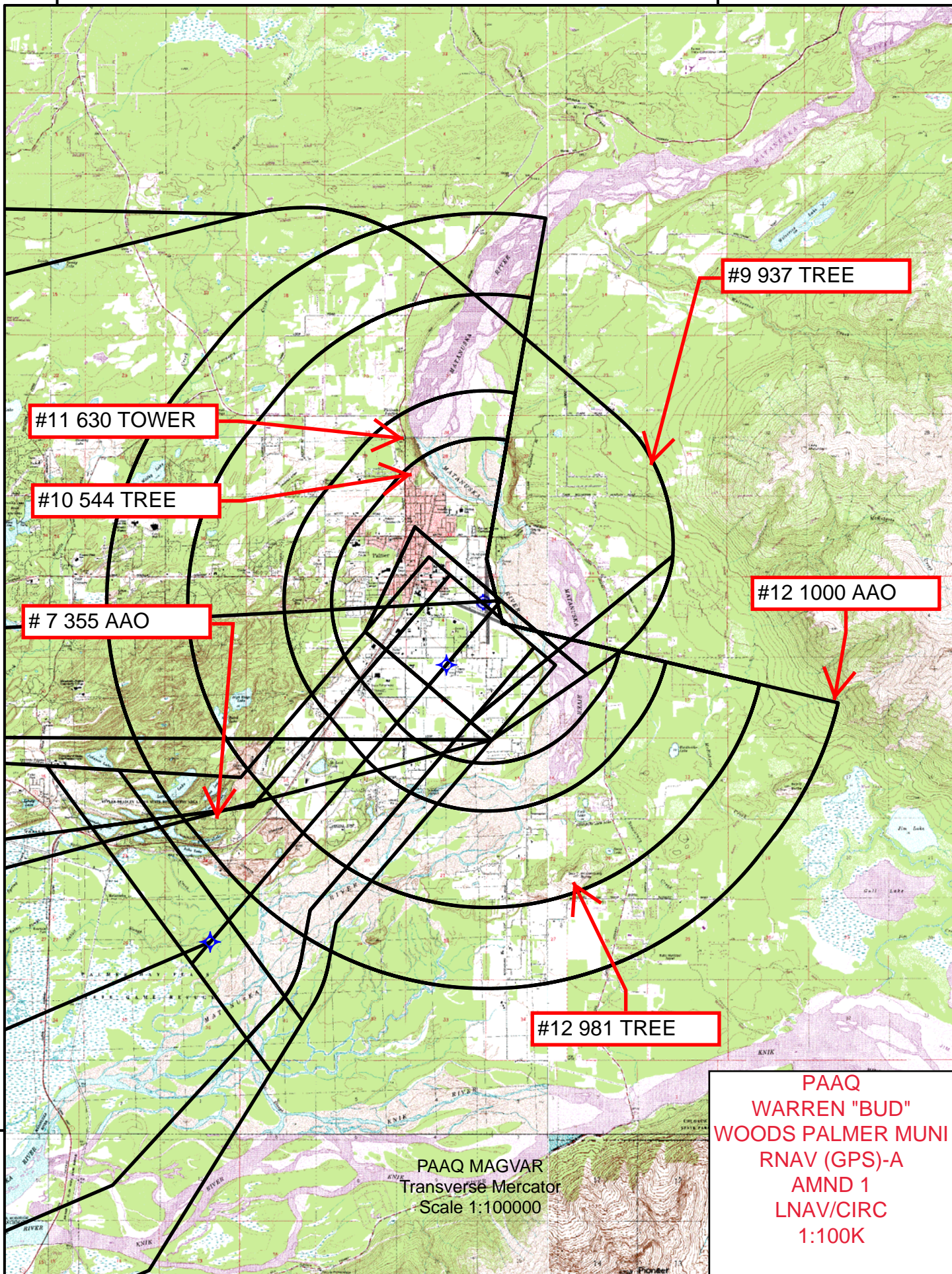




149°15'0"W

149°0'0"W

61°30'0"N





# Federal Aviation Administration

## Initial Development Notification for AIRNAV Pending Records

To: Janet Myers, National Flight Data Center, Sub Team B, AJV-5332

From: Lonnie Everhart, Manager IFP Coordination Team, AJV-531

Subject: **ACTION:** Request for Pending Records **PAAQ\_PAQ\_\_WARREN "BUD" WOODS PALMER MUNI, PALMER, AK US**

The Magnetic Variation (MV) data for the airport(s) and/or facility(s) listed will be revised effective concurrent with the publication of the procedure(s) listed below. Estimated Chart Date: 9/13/2018

Current/Assigned MV    New MV

ECD	Airport ID		Procedure Name	AMDT #	Task Report Type Selections
9/13/2018	PAAQ	PAQ	PALMER (OBSTACLE)(RNAV) FIVE PALMER AK PAAQ	/A	ENROUTE, FPT-INITIATED, MAGVAR
9/13/2018	PAAQ	PAQ	PALMER AK PAAQ AMDT 2B	/A	ABBREV AMEND, ENROUTE-NON, FPT-INI
9/13/2018	PAAQ	PAQ	RNAV (GPS) A AMDT 1	/A	ENROUTE-NON, FPT-INITIATED, MAGVAR
9/13/2018	PAAQ	PAQ	RNAV (GPS) RWY 10 AMDT 2	/A	ENROUTE-NON, FPT-INITIATED, MAGVAR

NAVAID ID / RWY	Type / Old No.	Use / New RWY/Note
RWY	27	28
RWY	09	10

RWYS WILL BE RENUMBERED.

IF you have any questions please notify: [lonnie.everhart@faa.gov](mailto:lonnie.everhart@faa.gov)

(405) 954-4576

Processed Thursday, March 01, 2018