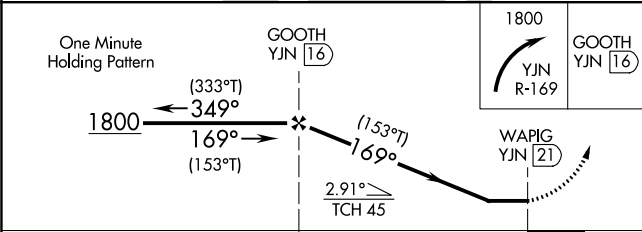
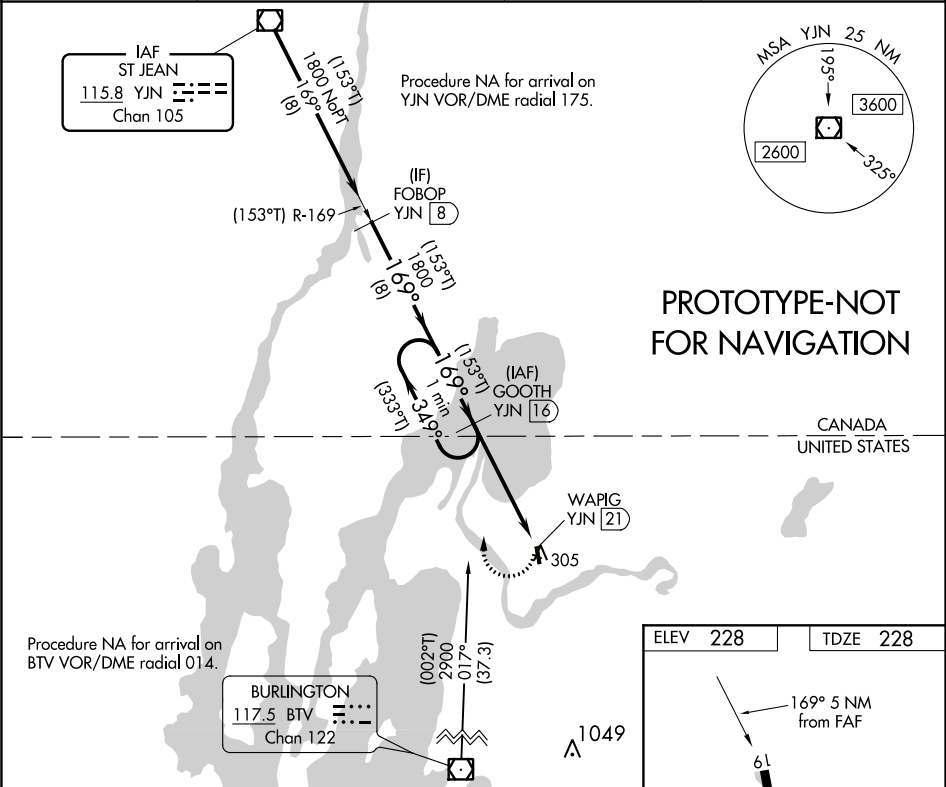


<b>Flight Procedure Tracking Form</b>		<b>Action:</b> AMENDMENT	<b>Task Type:</b> IAP	<b>Date Open:</b> 11/02/2017	<b>Task #:</b> 2017110241282501001	<b>Request #:</b> 20171102412825
<b>Procedure:</b> VOR RWY 19 AMDT 5B			<b>Airport ID:</b> KFSO	<b>Airport:</b> FRANKLIN COUNTY STATE		<b>Reimbursable #:</b> NO
<b>City:</b> HIGHGATE	<b>ST:</b> VT	<b>GPS #:</b>	<b>Estimated Chart Date:</b> 07/19/2018		<b>FICO #:</b>	
<b>Fac ID:</b> YJN		<b>Fac. Type:</b> VORTAC			<b>Specialist:</b> DAVID SCHUERHOFF	
<b>Procedure Review</b>						
	<b>Rec'd</b>	<b>Rel'd</b>	<b>Full Name</b>	<b>Comments</b>		
<b>Lead:</b>	11/02/2017	04/04/2018	MARK ADAMS	<div style="display: flex; align-items: center;"> <div style="text-align: center; margin-right: 10px;"> <b>QUALITY</b> 13 <b>CHECKED</b> </div> <div> <i>Digitally signed by</i>  <b>BEV L BORDY</b>  May 18, 2018 </div> </div>		
<b>QA:</b>	04/04/2018	04/12/2018	ANDI LAU			
<b>Liaison:</b>						
<b>Procedure Comments:</b> ENROUTE-NON <b>Remark Type:</b> INFORMATION FLIGHT INSPECTION REVIEW NOT REQUIRED - PROCESSED IAW AIRCRAFT OPERATIONS GROUP (AJW-333) MEMO, DEC 22, 2017..  REMOVED "/DME" FROM PROCEDURE NAME PER CURRENT TERPS NAMING CRITERIA; ADDED EQUIPMENT REQUIREMENTS NOTE: DME REQUIRED; ADDED EQUIPMENT REQUIREMENTS NOTE: DME REQUIRED FOR PROCEDURE ENTRY. REPLACED "STRAIGHT-IN/ CIRCLING RWY 19 PROCEDURE NA AT NIGHT" AND "WHEN VGSI INOP, CIRCLING RWY 1 NA AT NIGHT" CHART NOTES WITH "PROCEDURE NA AT NIGHT" CHART NOTE.  05/16/2018: THIS IS A CORRECTED COPY OF THE FORM APPROVED ON 12/20/2017.  1. REPLACED YJN VORTAC WITH (YJN VOR/DME) IN THE MISSED APPROACH INSTRUCTIONS.  CONTACT: LONNIE EVERHART 405-954-4576						

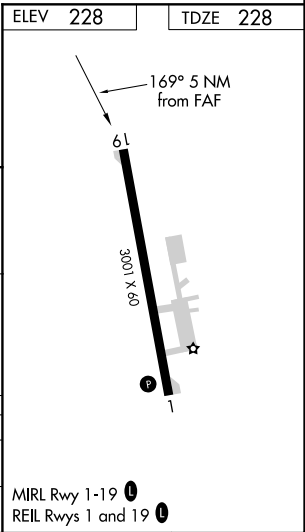
VOR/DME YJN	APP CRS	Rwy Idg	3001
115.8	169°	TDZE	228
Chan 105		Apt Elev	228

VOR RWY 19  
FRANKLIN COUNTY STATE (FSO)

DME required for procedure entry. DME required.			MISSED APPROACH: Climbing right turn to 1800 on YJN VOR/DME R-169 to GOOTH /YJN 16 DME and hold.
<div><div>▼</div><div>▲ NA</div></div> <td colspan="2">Rwy 19 helicopter visibility reduction below 1 SM NA. Procedure NA at night. When local altimeter setting not received, use Plattsburgh altimeter setting and increase all MDA 60 feet.</td>	Rwy 19 helicopter visibility reduction below 1 SM NA. Procedure NA at night. When local altimeter setting not received, use Plattsburgh altimeter setting and increase all MDA 60 feet.		
AWOS-3 119.025	BURLINGTON APP CON ★ 121.1 (EAST) 278.8 (WEST) 360.8	GCO 121.725	UNICOM 122.8 (CTAF) 0

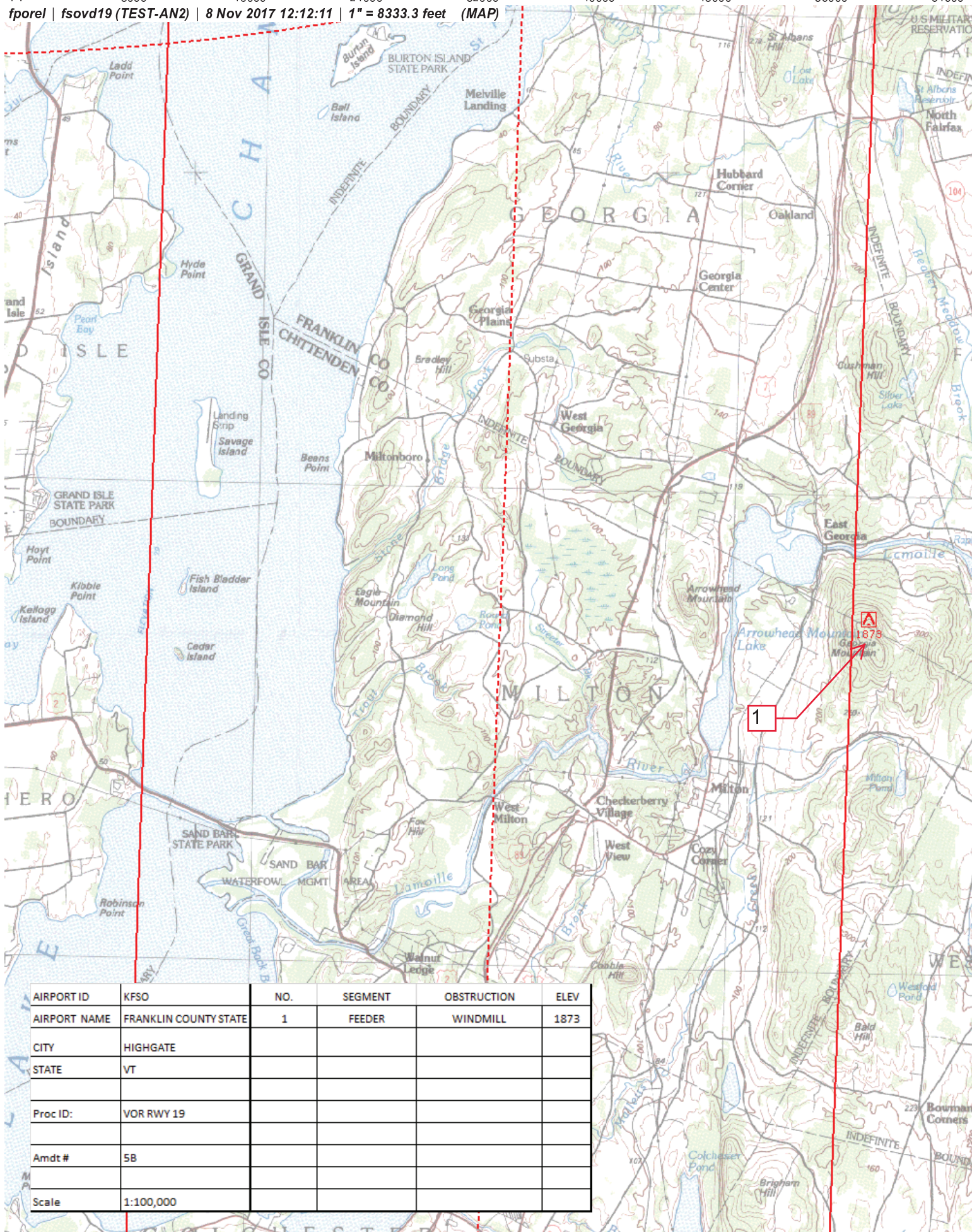


CATEGORY	A	B	C	D
S-19	880-1	652 (700-1)	NA	
CIRCLING	880-1 652 (700-1)	880-1¼ 652 (700-1¼)	NA	



NM 1 2 3 4 5 6 7 8 9 10  
FT 8000 16000 24000 32000 40000 48000 56000 64000

fporel | fsovd19 (TEST-AN2) | 8 Nov 2017 12:12:11 | 1" = 8333.3 feet (MAP)



AIRPORT ID	KFSO	NO.	SEGMENT	OBSTRUCTION	ELEV
AIRPORT NAME	FRANKLIN COUNTY STATE	1	FEEDER	WINDMILL	1873
CITY	HIGHGATE				
STATE	VT				
Proc ID:	VOR RWY 19				
Amdt #	5B				
Scale	1:100,000				