

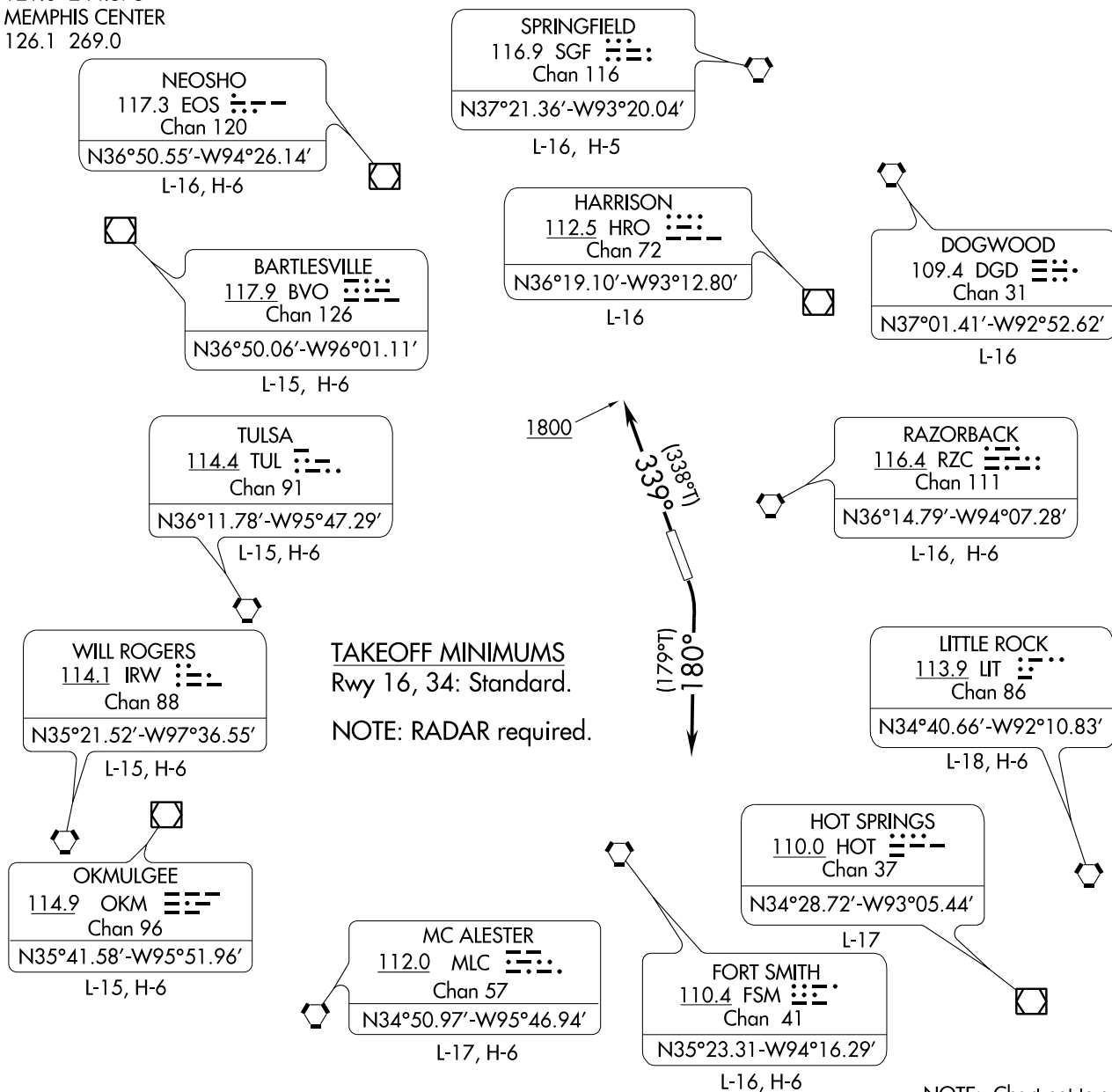
Flight Procedure Tracking Form		Action: AMENDMENT	Task Type: SID	Date Open: 11/02/2017	Task #: 2017110229396301001	Request #: 20171102293963
Procedure: SID HIGHFILL SEVEN FAYETTEVILLE/SPRINGDALE/ROGER AR KXNA			Airport ID: KXNA	Airport: NORTHWEST ARKANSAS RGNL		Reimbursable #: NO
City: FAYETTEVILLE/SPRINGDALE/ROGERS	ST: AR	GPS #:	Estimated Chart Date: 07/19/2018			FICO #:
Fac ID: N/A		Fac. Type:		Specialist: DAVID DOWLING		
Procedure Review						
	Rec'd	Rel'd	Full Name	Comments		
Lead:	01/09/2018					
QA:						
Liaison:						
Procedure Comments:			ENROUTE Remark Type: INFORMATION			
<p>FLIGHT INSPECTION REVIEW NOT REQUIRED - PROCESSED IAW AIRCRAFT OPERATIONS GROUP (AJW-333) MEMO, DEC 22, 2017.</p> <p>PUB DAY: CANCEL FDC 7/7922.</p> <p>MANAGER CONTACTS: ROBERT HAMILTON, AJV-5422, 405-954-4608; JULIE MORGAN, AJV-5420, 405-954-8568.</p>						



ATIS 119.425
 GND CON 121.9
 NORTHWEST ARKANSAS RGNL TOWER★
 127.1
 RAZORBACK DEP CON★
 121.0 244.575
 MEMPHIS CENTER
 126.1 269.0

PROTOTYPE-NOT FOR NAVIGATION

**TOP ALTITUDE:
5000**



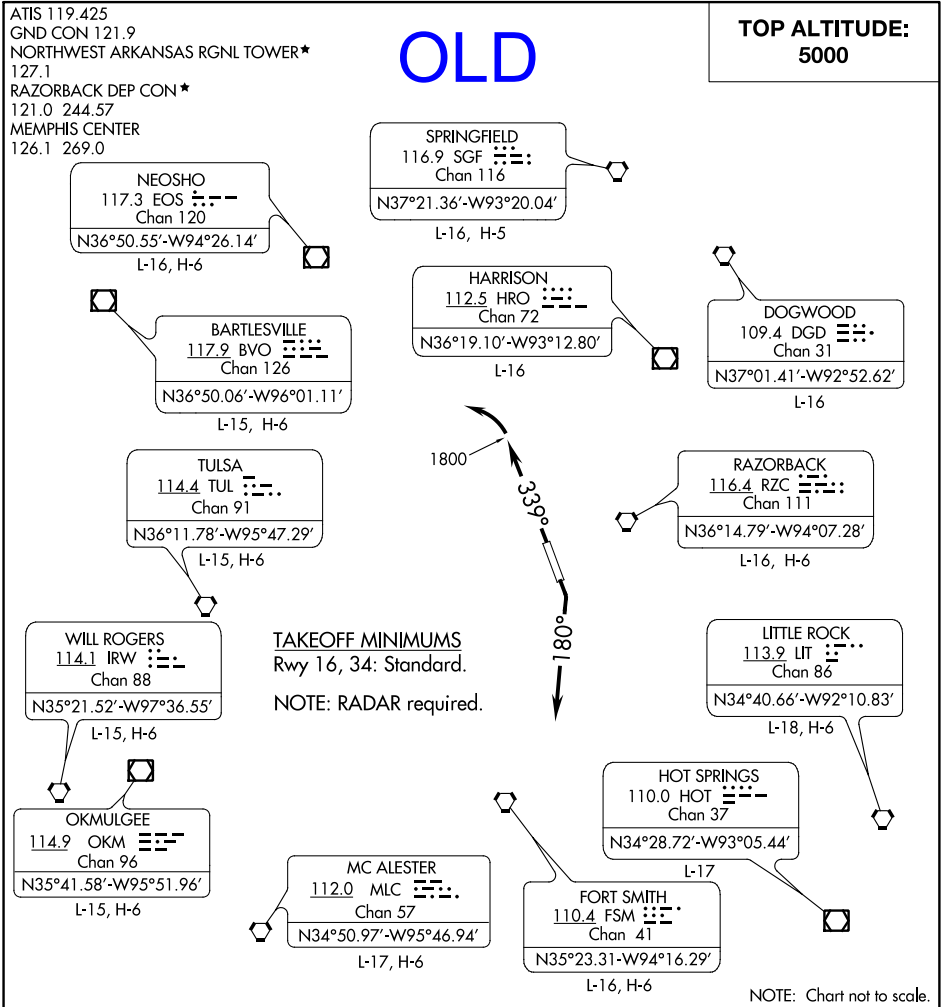
DEPARTURE ROUTE DESCRIPTION

TAKEOFF RWY 16: Climbing right turn heading 180°. Thence . . .

TAKEOFF RWY 34: Climb heading 339° to 1800, thence . . .

. . . expect RADAR vectors to filed/assigned route. Climb and maintain 5000 or other assigned altitude. Expect filed altitude ten minutes after departure.

LOST COMMUNICATION PROCEDURES: If communications are not established within 2 minutes after departure, climb and maintain 5000 feet and proceed direct RZC VORTAC, then proceed on course.



▼

DEPARTURE ROUTE DESCRIPTION

TAKEOFF RWY 16: Climbing right turn heading 180°. Thence

TAKEOFF RWY 34: Climb heading 339° to 1800 before turning left, thence

. . . . expect RADAR vectors to filed/assigned route. Climb and maintain 5000 or other assigned altitude. Expect filed altitude ten minutes after departure.

LOST COMMUNICATION PROCEDURES: If communications are not established within 2 minutes after departure, climb and maintain 5000 feet and proceed direct RZC VORTAC, then proceed on course.