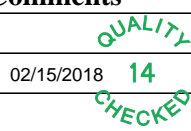





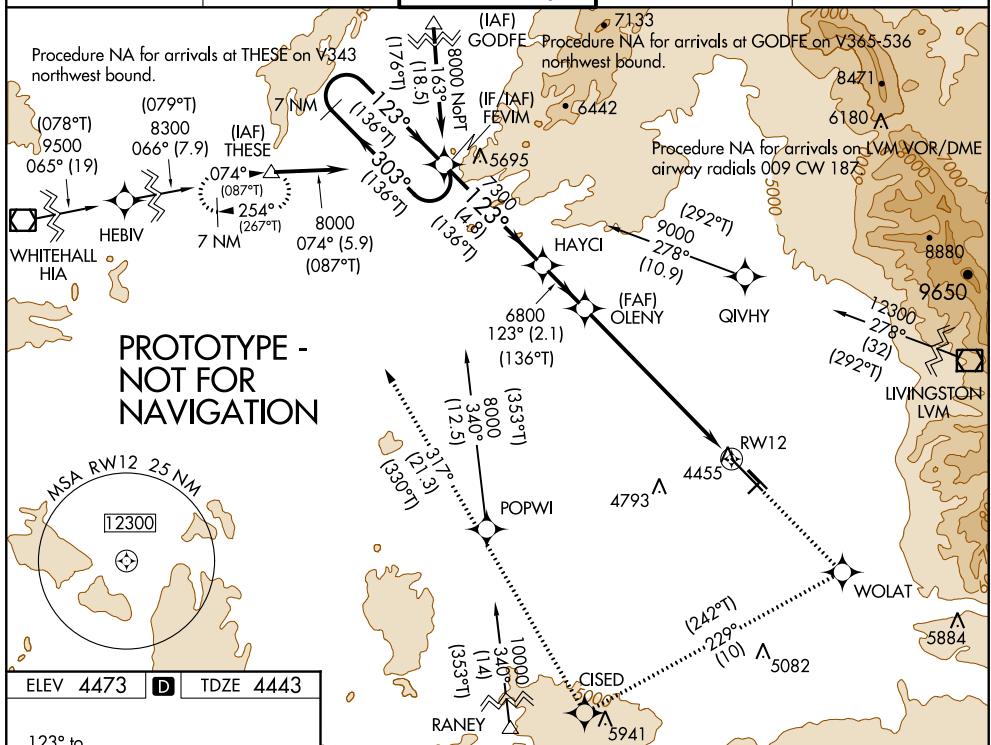
Flight Procedure Tracking Form		Action: FLIGHT CHECK	Task Type: IAP	Date Open: 10/25/2017	Task #: 2017102533356101004	Request #: 20171025333561
Procedure: RNAV (GPS) Y RWY 12 AMDT 0B			Airport ID: KBZN	Airport: BOZEMAN YELLOWSTONE INTL		Reimbursable #: NO
City: BOZEMAN	ST: MT	GPS #:	Estimated Chart Date: 05/24/2018		FICO #:	
Fac ID: N/A		Fac. Type:			Specialist: ROBERT COOK	
Procedure Review						
	Rec'd	Rel'd	Full Name	Comments		
Lead:	10/26/2017					
QA:						
Liaison:						
Procedure Comments:			ENROUTE-NON	Remark Type: INFORMATION		
CONTACT ALLAN WILL, AJV-5412, 405-954-6103, ALLAN.WILL@FAA.GOV						

FIPC BASIC FORM							
PROCEDURE: RNAV (GPS) Y RWY 12 ORIG B			AIRPORT NAME: BOZEMAN YELLOWSTONE INTL		AIRPORT ID: KBZN	SPECIAL CONTROL NO: SG-02-264-18	
FAC ID: KBZN12Y		CITY: BOZEMAN			ST: MT	ORIG CHART DATE: 05/24/2018	
DFL TYPE: PROC/S	THIRD PARTY: <input type="checkbox"/> YES	EST. TIME ON SITE: 0.4	REIMB. NUMBER:		PTS TASK ID: 2017102533356101004		
PREFLIGHT NOTES							
REVIEWER:					DATE:		
COMMENTS:					CHECK ONE:		
					<input type="checkbox"/> FLT CK REQ <input type="checkbox"/> NFCR <input type="checkbox"/> REJECT		
							YES
					CPV COMPLETE?		
PROCEDURE RESULTS							
INSPECTION DATE: 03/01/2018		CREW #: VN888	N #:	INSTRUMENT PROCEDURE STATUS: <input type="checkbox"/> SAT <input type="checkbox"/> SAT W/CHANGES <input checked="" type="checkbox"/> UNSAT		ARINC CODING: <input type="checkbox"/> SAT <input type="checkbox"/> SAT/GOLD <input type="checkbox"/> UNSAT	
FLIGHT INSPECTOR SIGNATURE: elizabeth whaley @ 03/01/2018 10:32			PRINTED NAME: AVN, CREWMEMBER 2				NOTAM INITIATED? <input type="checkbox"/> YES <input checked="" type="checkbox"/> NO
FLIGHT INSPECTOR REMARKS: LTP/FTP check is in error. FAF to LTP/FTP inverse matches at 135.67, but LTP/FTP to FPAP inverse calculation comes out at 002.28, which is approx 133 degrees off.							
IN-FLIGHT OBSTACLE REPORT							
OBSTRUCTION ID #:	COORDINATES OR LOCATION:		GNSS ALTITUDE (MSL):		BAROMETRIC ALTITUDE (MSL):		HEIGHT ABOVE GROUND LEVEL:

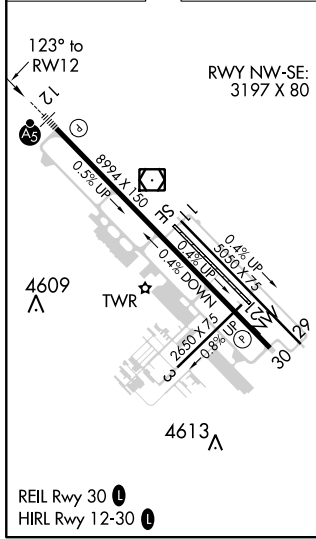
RNAV (GPS) Y RWY 12
BOZEMAN YELLOWSTONE INTL (BZN)




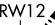

<p>  -12°C For uncompensated Baro-VNAV systems, LNAV/VNAV NA below -26°C (14°F) or above 49°C (121°F). RNAV 1-DME/DME/IRU or GPS required. </p>	<p>  MALSR  A5 </p>	<p> MISSED APPROACH: Climb to 8300 direct WOLAT and right turn on track 229° to CISED and on track 317° to THESE and hold. </p>
---	--	---

ATIS 135.425	BIG SKY APP CON ★ 118.975 226.675	BOZEMAN TOWER ★ 118.2 (CTAF) 0	GND CON 121.8	UNICOM 122.95
-----------------	--------------------------------------	-----------------------------------	------------------	------------------



ELEV 4473	D	TDZE 4443
-----------	----------	-----------



7 NM Holding Pattern (316°T) 8000 ← 303° 123° → (136°T) GP 3.00° TCH 53		FEVIM (136°T) HAYCI 7300 123°	8300 ↑ WOLAT 	tr 229° CISED 	tr 317° THESE 	* LNAV only
		4.8 NM 2.1 NM 5.7 NM 1.5 NM	OLENY 6800 * 1.5 NM to RW12	RW12 		
CATEGORY	A	B	C	D		
LPV DA	4693-1½		250 (300-½)			
LNAV/VNAV DA	5094-1¾		651 (700-1¾)			
LNAV MDA	4960-½ 517 (500-½)		4960-1 517 (500-1)	4960-1¼ 517 (500-1¼)		
 CIRCLING	4960-1 487 (500-1)		5160-2 687 (700-2)	5360-3 887 (900-3)		

WAAS CH 72816 W12A	APP CRS 123°	Rwy Idg TDZE 4443 Apt Elev 4473
--	------------------------	---



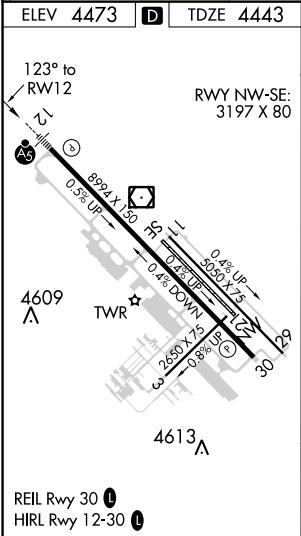
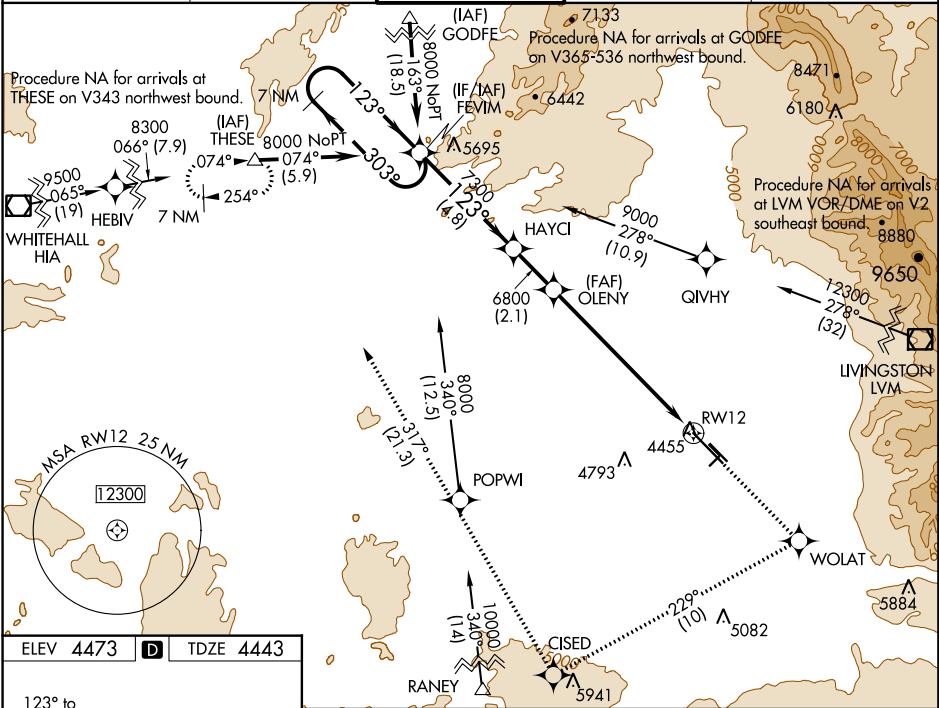
RNAV (GPS) Y RWY 12
BOZEMAN YELLOWSTONE INTL (BZN)

For uncompensated Baro-VNAV systems, LNAV/VNAV NA below -23°C (-9°F) or above 49°C (121°F).
DME/DME RNP-0.3 NA. For inoperative MALSR, increase LPV DA all Cats visibility to 1 mile.

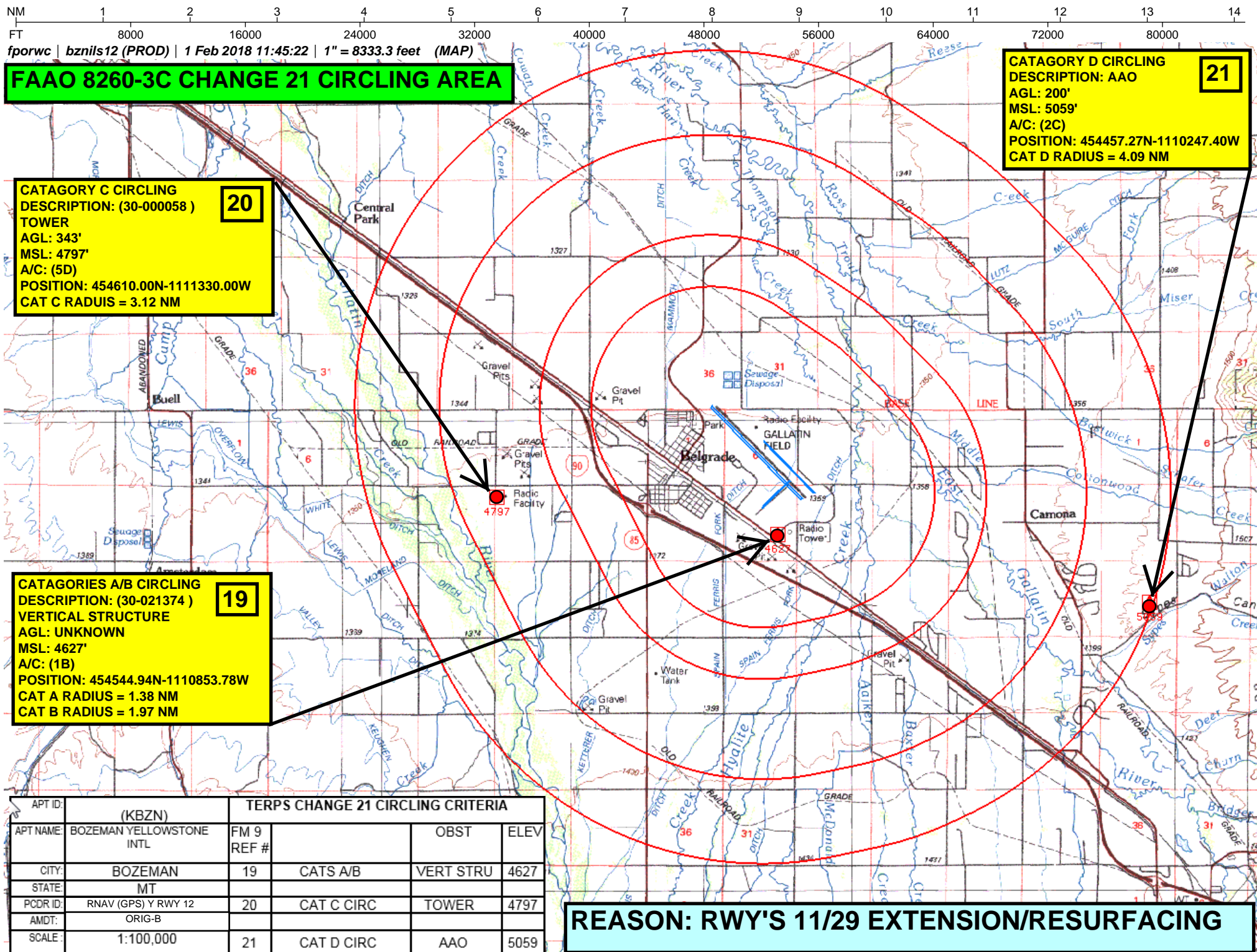


MISSED APPROACH: Climb to 8300 direct WOLAT and right turn on track 229° to CISED and on track 317° to THESE and hold.

ATIS 135.425	BIG SKY APP CON ★ 118.975 226.675	BOZEMAN TOWER ★ 118.2 (CTAF) 0	GND CON 121.8	UNICOM 122.95
------------------------	---	--	-------------------------	-------------------------



7 NM Holding Pattern FEVIM		8300	WOLAT	CISED	THESE
8000		↑	✧	tr 229°	tr 317°
303°		123°	123°		
HAYCI		OLENY			
8000		6800			
GP 3.00° TCH 53					
4.8 NM		2.1 NM	5.7 NM	1.5 NM	
CATEGORY	A	B	C	D	
LPV DA	4693-½ 250 (300-½)				
LNAV/VNAV DA	5094-1¼ 651 (700-1¼)				
LNAV MDA	4960-½ 517 (500-½)	4960-1 517 (500-1)	4960-1¼ 517 (500-1¼)	5040-2 567 (600-2)	
CIRCLING	4960-1 487 (500-1)	4960-1½ 487 (500-1½)	5040-2 567 (600-2)		



Periodic Review

Bryan Herrick

06-08-16

BOZEMAN YELLOWSTONE INTL AIRPORT
BOZEMAN, MT (KBZN)

RNAV _GPS_ Y RWY 12 ORIG A

Summary/Findings

FULL REVIEW

AIRPORT MAG VAR IS WITHIN TOLERANCE

2. AMENDMENT: YES

- PFAF LOCATION WILL CHANGE WITH REVISED FORMULA
- INTERMEDIATE SEGMENT LENGTH PRIOR TO PFAF LESS THAN 2 NM WITH RELOCATED PFAF
- CIRCLING REQUIRES NEW RADII IAW 8260-3C
- TEMPERATURE DATA AVAILABLE FOR BARO-VNAV

3. ADDITIONAL INFORMATION:

- LOWER LPV AND LNAV/VNAV MINIMA ARE POSSIBLE: OCS AND MISSED PENETRATIONS ARE NO LONGER A FACTOR.
- MISSED APPCH EVALUATED TO FIRST WAYPOINT (WOLAT) USING IPDS. SUBSEQUENT MISSED SEGMENT CONSTRUCTED DIRECT TO THESE INTERSECTION TO FACILITATE HOLDING, BUT NOT EVALUATED DUE TO AUTOMATION LIMITATIONS.
- IPDS PRECIPITOUS TERRAIN CALCULATIONS AFFECTED MORE INTERMEDIATE AND INITIAL SEGMENTS THAN DOCUMENTED. HOWEVER, WITH DOCUMENTED AIR TRAFFIC ALT ADJUSTMENTS, THE MINIMUM ALTITUDES WERE NOT AFFECTED.
- AIRSPACE LETTER IS IN THE FOLDER
- VISCHECK COMPLETE: NO ACTION REQUIRED

REVIEWED BY BRYAN HERRICK (LOCKHEED MARTIN)

Actions/Notes

TERMINAL AIRSPACE DATA REQUIREMENTS

CITY: **BOZEMAN**

STATE: **MT**

AIRPORT NAME: **BOZEMAN YELLOWSTONE INTL**

ID: **KBZN**

PROCEDURE: **RNAV (GPS) Y RWY 12**

AMDT: **ORIG-B**

DOCKET#: **NOT REQUIRED**
(96-AXX-X/Required/Not Required)

ALL DIST TO 1/100 NM; ELEV TO NEAREST FT; COORD TO 1/100 SEC; DEG TO 1/100 DG.

- | | | | |
|---|---------------------------------|--------------------------------|---------------|
| 1. Distance from | <u>THLD</u> | to 1000' point | <u>2.58</u> |
| <small>(Enter THLD, FAF, ARP, FACILITY, as appropriate)</small> | | | |
| 2. Width of | <u>FINAL</u> | segment at 1000' point | <u>1.20</u> |
| <small>(Enter appropriate segment, final, intermediate, etc.)</small> | | | |
| 3. True Course of | <u>FINAL</u> | segment containing 1000' point | <u>135.67</u> |
| 4. High Terrain in | <u>FINAL</u> | segment containing 1000' point | <u>4339</u> |
| 5. Distance from | <u>THLD</u> | to 1500' point | <u>5.15</u> |
| <small>(If 1500' point in PT maneuvering area or holding pattern note in remarks)</small> | | | |
| 6. Width of | <u>FINAL</u> | segment at 1500' point | <u>1.20</u> |
| 7. True Course of | <u>FINAL</u> | segment containing 1500' point | <u>135.67</u> |
| 8. High Terrain in | <u>FINAL</u> | segment containing 1500' point | <u>4339</u> |
| 9. Threshold Coordinates (if straight-in) ... | <u>454717.11N / 1110959.33W</u> | | |
| 10. ARP Coordinates | <u>454638.30N / 1110910.90W</u> | | |
| 11. Runway Approach End and distance furthest from ARP | RWY | <u>12</u> | |
| | Distance | <u>0.88</u> | NM |
| 12. FAF Coordinates | <u>455224.20N / 1111707.76W</u> | | |

REMARKS: Approach/Drawing attached.