

Flight Procedure Tracking Form		Action: FLIGHT CHECK	Task Type: IAP	Date Open: 01/26/2018	Task #: 2017101034458018006	Request #: 20171010344580
Procedure: RNAV (GPS)-A ORIG			Airport ID: KDUH	Airport: TOLEDO SUBURBAN		Reimbursable #: NO
City: LAMBERTVILLE	ST: MI	GPS #:	Estimated Chart Date: 05/24/2018		FICO #:	
Fac ID: N/A		Fac. Type:			Specialist: MICHAEL GARRITY	
Procedure Review						
	Rec'd	Rel'd	Full Name	Comments		
Lead:	11/09/2017	01/18/2018	DION LANCIA	Digitally signed by		
QA:	01/18/2018			19 JON DENTON		
Liaison:				CHECKED Jan 31, 2018		
Procedure Comments: ENROUTE-NON Remark Type: INFORMATION PENDING DATA USED FOR KDUH AIRPORT AND RUNWAYS ASSIGNED MAG VAR, KDUH: OLD 2W-NEW 7W CONTACT DION LANCIA, TEAM 2 SUBTEAM-C MANAGER, 405.954.1267, OR JULIE MORGAN, TEAM 2 MANAGER, 405.954.8568						

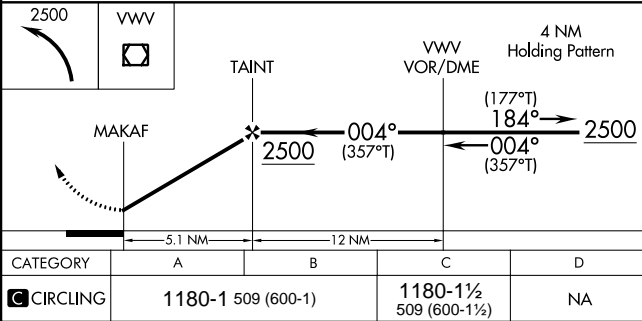
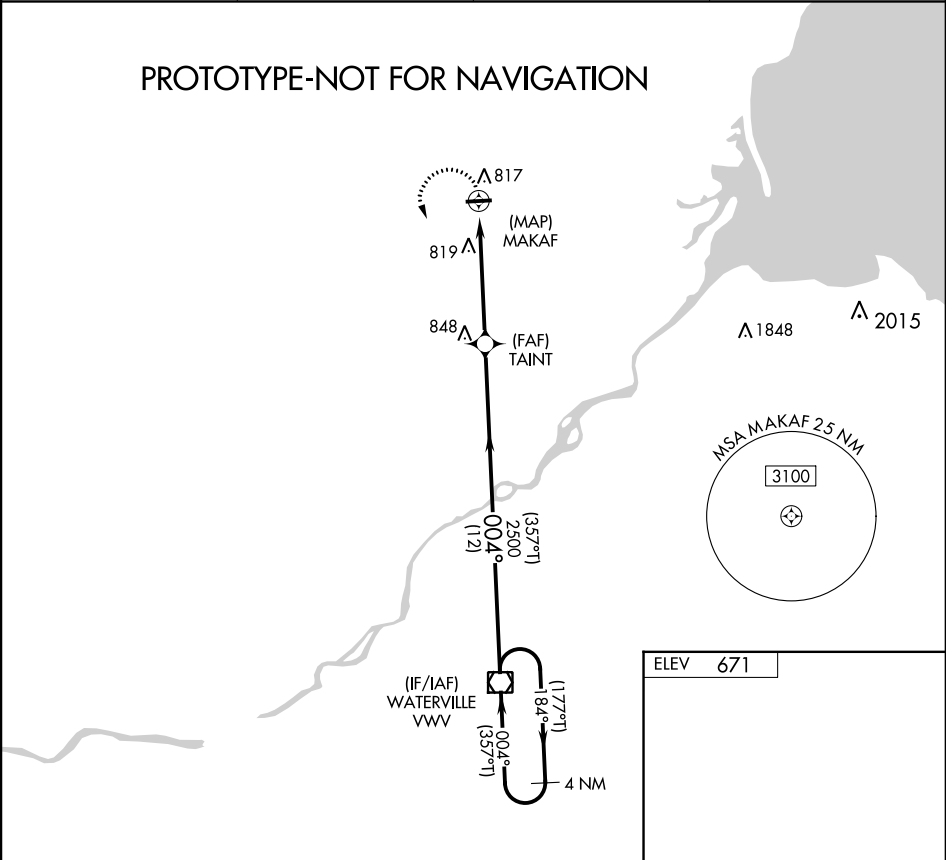
APP CRS	Rwy Idg	N/A
004°	TDZE	N/A
	Apt Elev	671

RNAV (GPS)-A
TOLEDO SUBURBAN (DUH)

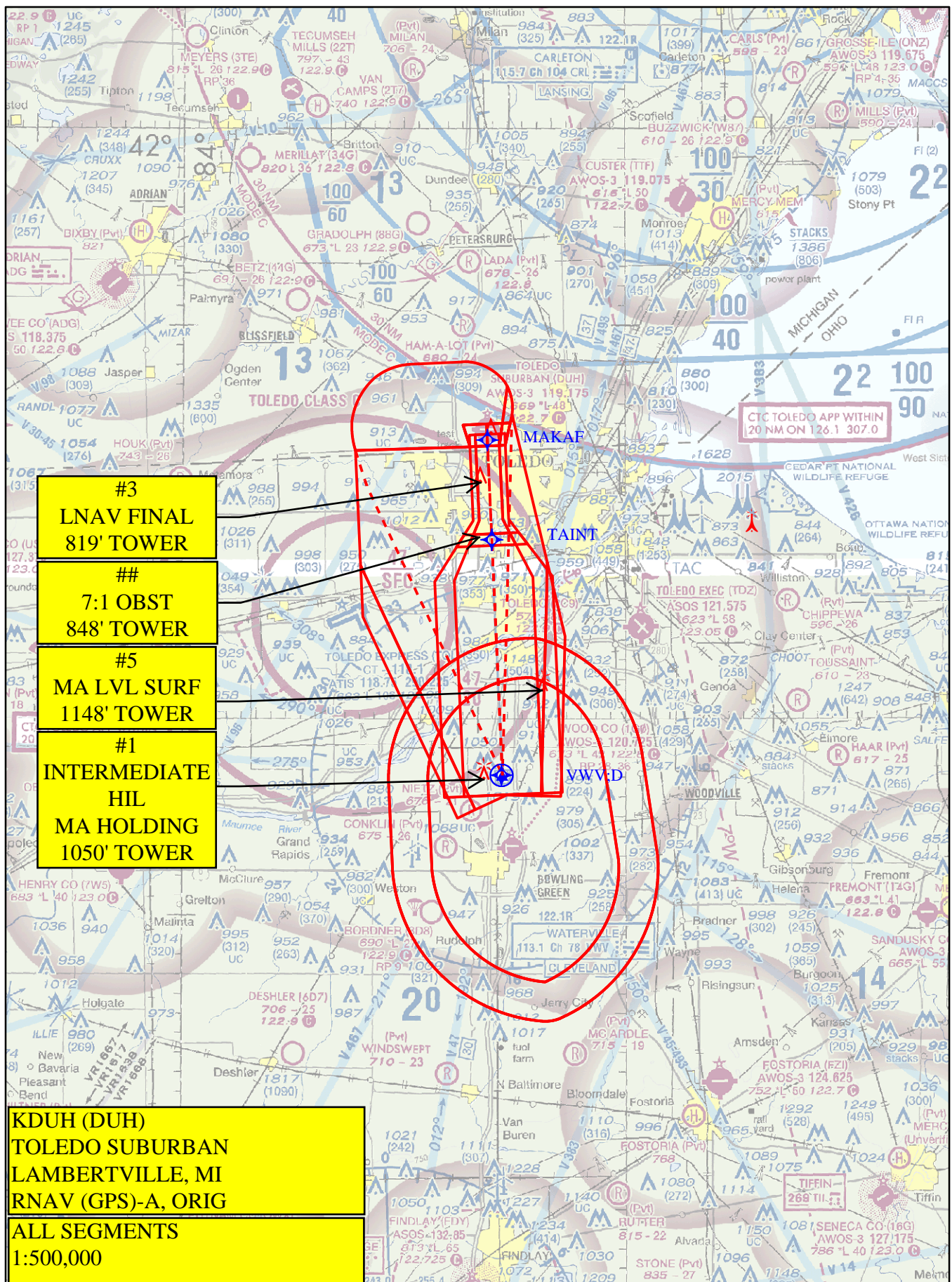
RNP approach. Radar required for procedure entry.

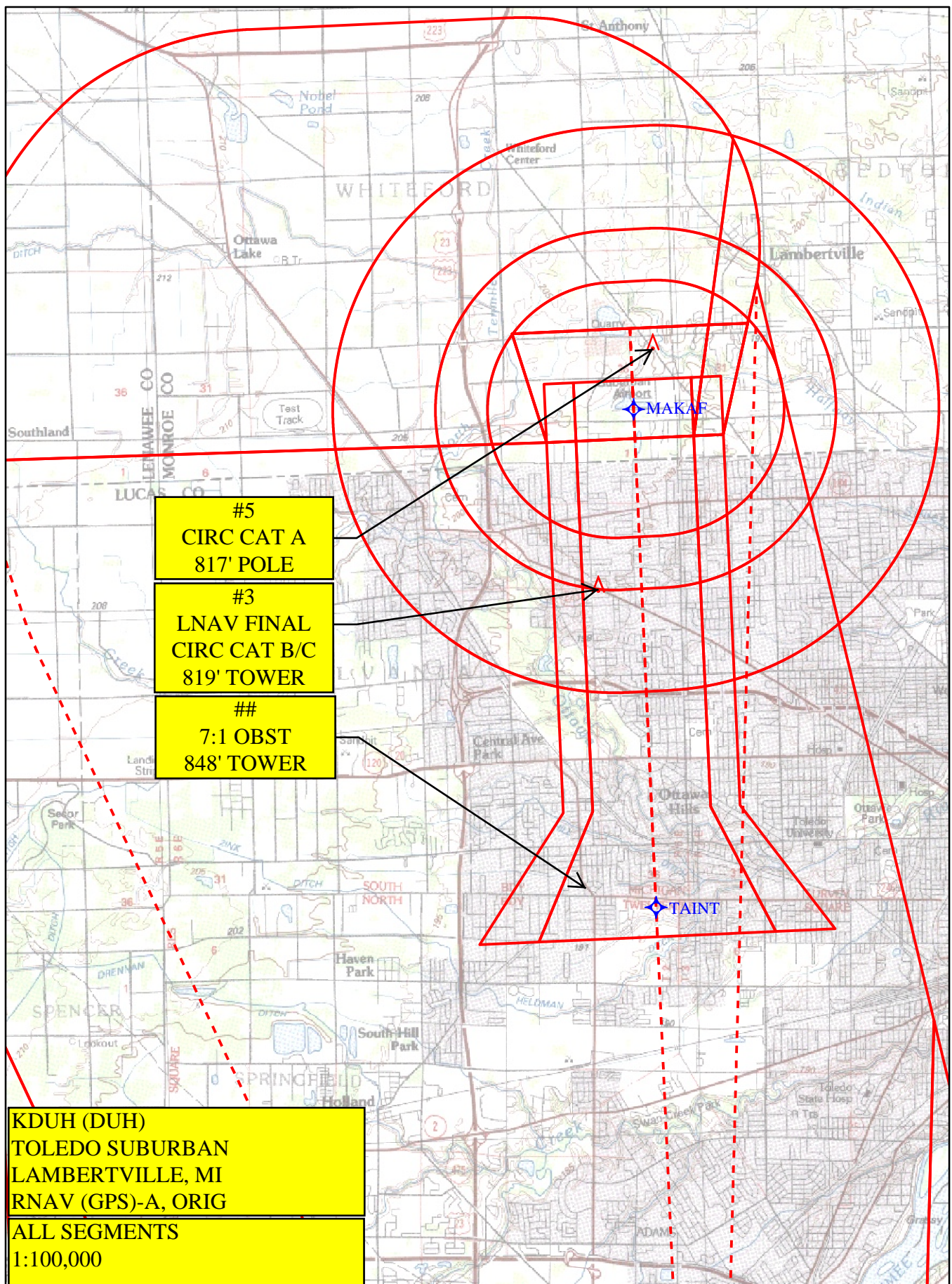
MISSED APPROACH: Climbing left turn to 2500
direct Waterville VOR/DME and hold.

Procedure NA at night.			
AWOS-3 119.175	TOLEDO APP CON 126.1 317.55	GCO 121.725	UNICOM 122.7 (CTAF) 0



ELEV 671
004° 5.1 NM from FAF
MIRL Rwy 9-27 0





TERMINAL AIRSPACE DATA REQUIREMENTS

STATE: MI

ID: KDUH

AMDT: **ORIG**

DOCKET#: **NOT REQUIRED**
(96-AXX-X/Required/Not Required)

ALL DIST TO 1/100 NM; ELEV TO NEAREST FT; COORD TO 1/100 SEC; DEG TO 1/100 DG.

1. Distance from THLD to 1000' point 2.40
(Enter THLD, FAF, ARP, FACILITY, as appropriate)

2. Width of FINAL segment at 1000' point 1.20
(Enter appropriate segment, final, intermediate, etc.)

3. True Course of FINAL segment containing 1000' point 357.42

4. High Terrain in FINAL segment containing 1000' point 653

5. Distance from THLD to 1500' point 4.47
(If 1500' point in PT maneuvering area or holding pattern note in remarks)

6. Width of FINAL segment at 1500' point 1.57

7. True Course of	FINAL	segment containing 1500' point	357.42
-------------------	--------------	--------------------------------	---------------

8. High Terrain in FINAL segment containing 1500' point 653

9. Threshold Coordinates (if straight-in) ... _____ / _____

10. ARP Coordinates **414409.15N / 0833920.75W**

11. Runway Approach End and distance furthest from ARP	RWY	9
--	-----	----------

Distance 0.40 NM

12. FAF Coordinates **413904.98N / 0833902.44W**

REMARKS: Approach/Drawing attached.

Federal Aviation Administration

Initial Development Notification for AIRNAV Pending Records

To: Janet Myers, National Flight Data Center, Sub Team B, AJV-5332

From: Lonnie Everhart, Manager IFP Coordination Team, AJV-531

Subject: **ACTION:** Request for Pending Records **KDUH_DUH__TOLEDO SUBURBAN, LAMBERTVILLE, MI US**

The Magnetic Variation (MV) data for the airport(s) and/or facility(s) listed will be revised effective concurrent with the publication of the procedure(s) listed below. Estimated Chart Date: 5/24/2018

Current/Assigned MV W 2 1980 New MV W 7 2020

ECD	Airport ID		Procedure Name	AMDT #	Task Report Type Selections
5/24/2018	KDUH	DUH	RNAV (GPS)-A ORIG	0	ENROUTE-NON, FPT-INITIATED, MAGVAR

IF you have any questions please notify: patrick.j.mulqueen@faa.gov

(405) 954-4576

Processed Tuesday, January 30, 2018