


Flight Procedure Tracking Form		Action: FLIGHT CHECK	Task Type: IAP	Date Open: 10/18/2017	Task #: 201710103445800U001	Request #: 20171010344580
Procedure: RNAV (GPS) RWY 6 AMDT 0B			Airport ID: K16G	Airport: SENECA COUNTY		Reimbursable #: NO
City: TIFFIN	ST: OH	GPS #:	Estimated Chart Date: 05/24/2018		FICO #:	
Fac ID: N/A		Fac. Type:		Specialist: RALPH DUMAR		
Procedure Review						
	Rec'd	Rel'd	Full Name	Comments		
Lead:	11/27/2017	02/15/2018	ROBERT HAMILTON			
QA:	02/15/2018					
Liaison:						
Procedure Comments: ENROUTE-NON Remark Type: INFORMATION K16G ACTIVE DATA USED. REMARKS: FEEDER SEGMENT REMOVED, CIRCLING MDA RAISED 20 FEET, FINAL SEGMENT 7:1 OBSTACLE ADDED. CONTACT ROBERT HAMILTON 405-954-4608.						

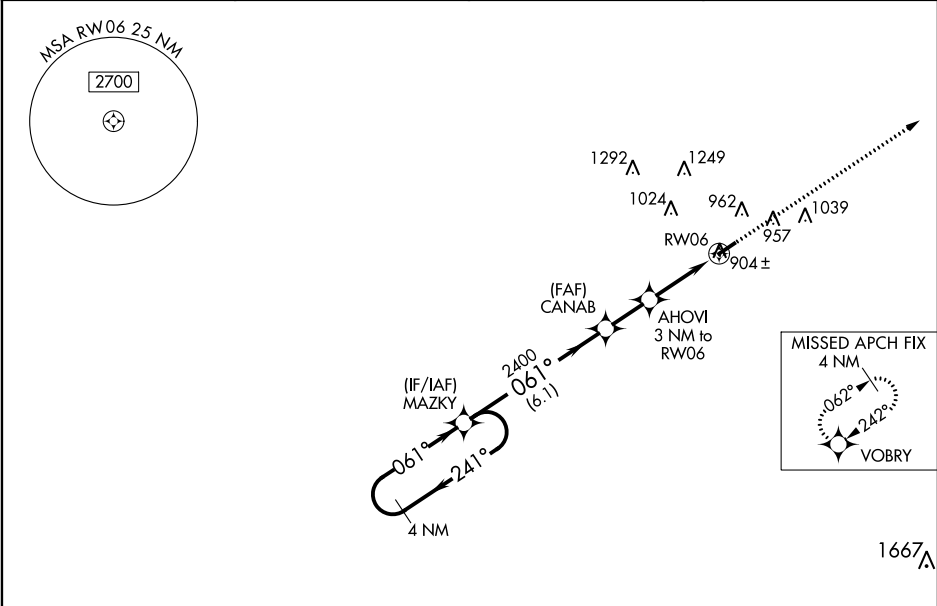
WAAS CH 77713 W06A	APP CRS 061°	Rwy Idg TDZE Apt Elev	4000 786 786
--	------------------------	-----------------------------	---

RNAV (GPS) RWY 6
SENECA COUNTY (16G)

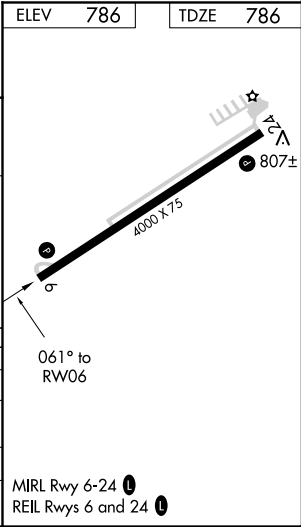
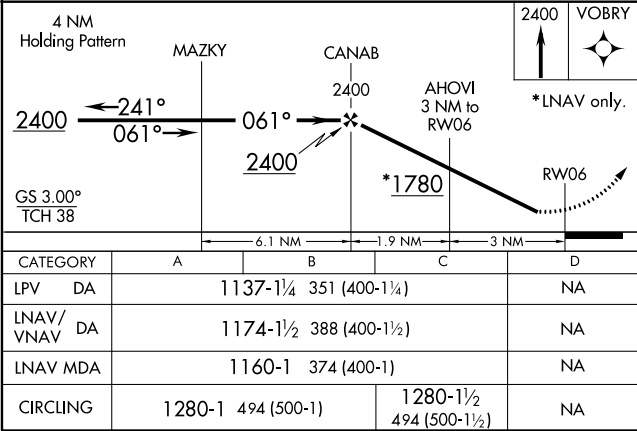
RNP APCH.

<p>⚠ Baro-VNAV NA when using Findlay altimeter setting. For uncompensated Baro-VNAV systems, LNAV/VNAV NA below -16°C or above 54°C. When local altimeter setting not received, use Findlay altimeter setting and increase all DA 53 feet and all MDA 60 feet, increase LPV all Cats visibilities ¼ mile and LNAV Cat C visibility ¼ mile. Circling to Rwy 24 NA at night.</p> <p>⚠ NA</p>	<p>MISSED APPROACH: Climb to 2400 direct VOBRY and hold.</p>
--	---

AWOS-3 127.175	FINDLAY ASOS 132.85	TOLEDO APP CON 120.8 317.55	UNICOM 123.0 (CTAF) 1
--------------------------	-------------------------------	---------------------------------------	---------------------------------



PROTOTYPE-NOT FOR NAVIGATION



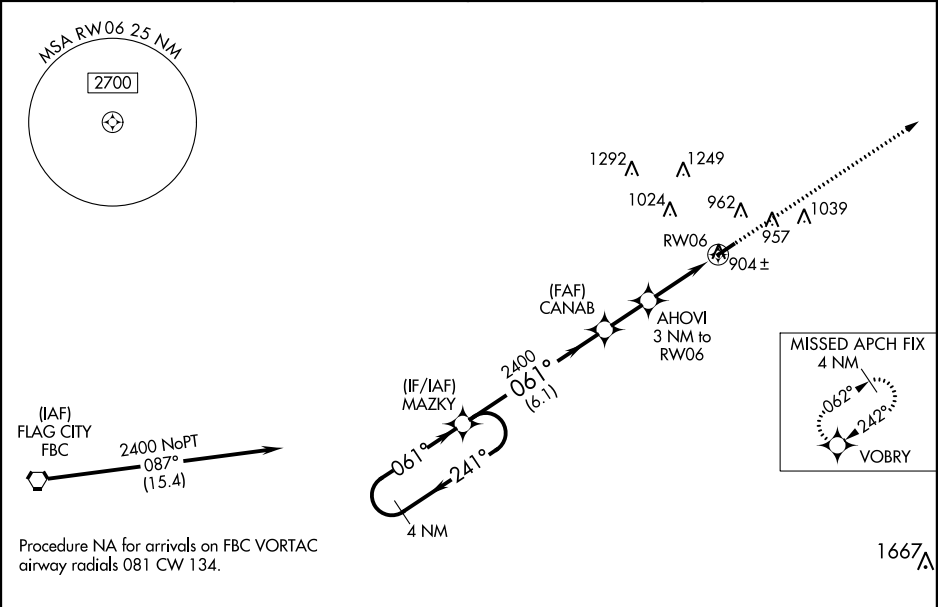
WAAS CH 77713 W06A	APP CRS 061°	Rwy Idg TDZE Apt Elev	4000 786 786
--	------------------------	-----------------------------	---

OLD

RNAV (GPS) RWY 6
SENECA COUNTY (16G)

 Baro-VNAV NA when using Findlay altimeter setting. For uncompensated Baro-VNAV systems, LNAV/VNAV NA below -16°C (4°F) or above 54°C (130°F). DME/DME RNP-0.3 NA. NA Visibility reduction by helicopters NA. When local altimeter setting not received, use Findlay altimeter setting and increase all DA 53 feet and all MDA 60 feet, increase LPV all Cats visibilities ¼ mile and LNAV Cat C visibility ¼ mile. Straight-in/Circling Rwy 6 NA at night.	MISSED APPROACH: Climb to 2400 direct VOBRY and hold.
--	---

AWOS-3 127.175	FINDLAY ASOS 132.85	TOLEDO APP CON 120.8 317.55	UNICOM 123.0 (CTAF)
--------------------------	-------------------------------	---------------------------------------	-------------------------------



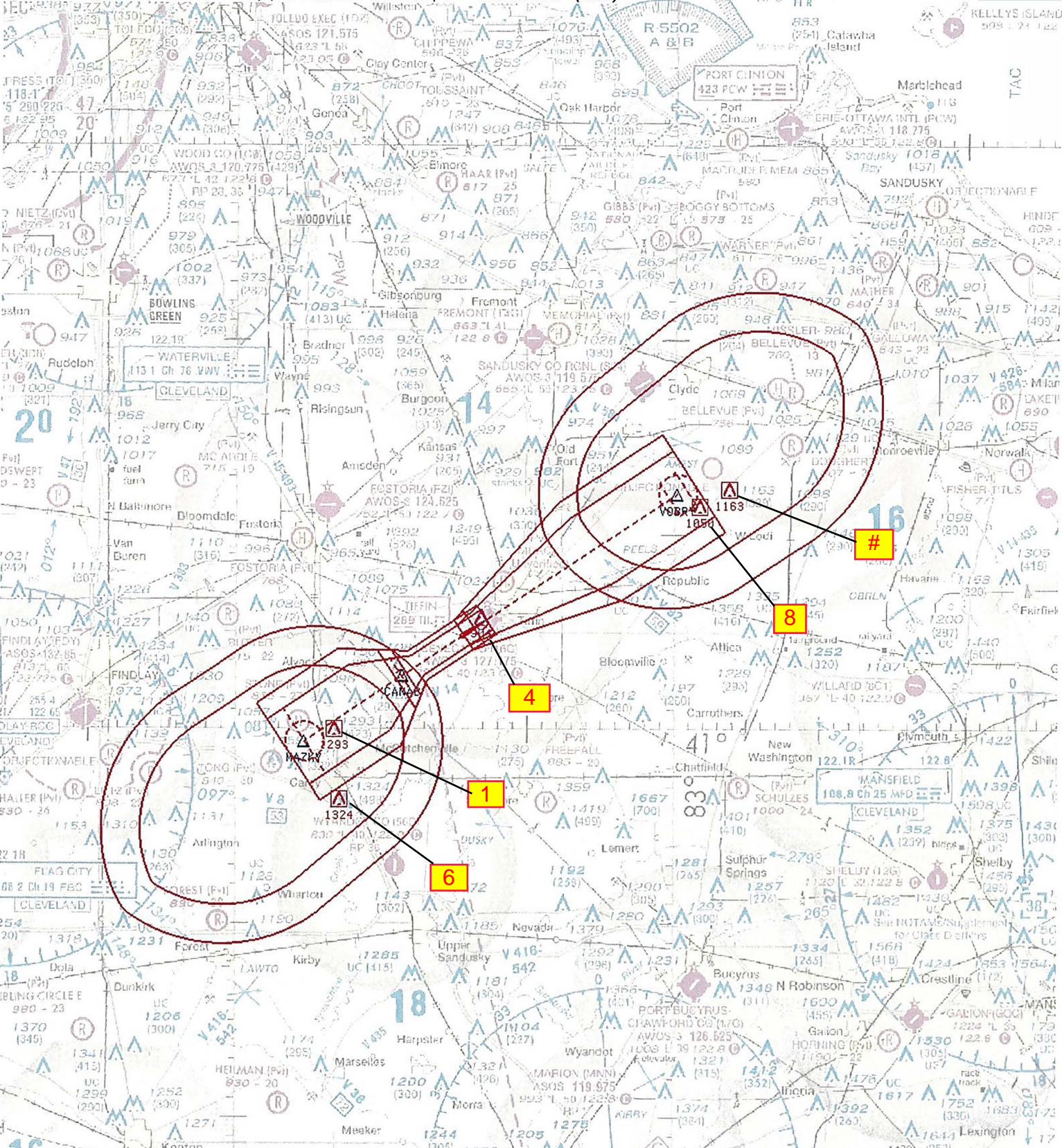
4 NM Holding Pattern		ELEV 786		TDZE 786	
MAZKY		CANAB		AHOVI 3 NM to RW06	
2400		2400		RW06	
←241°		061°		*LNAB only.	
061°→		2400		2400 VOBRY	
GS 3.00°		*1780		4000 x 7.5	
TCH 38		6.1 NM		061° to RW06	
		1.9 NM		MIRL Rwy 6-24	
		3 NM		REIL Rwy 6 and 24	
CATEGORY	A	B	C	D	
LPV DA	1137-1¼	351 (400-1¼)		NA	
LNAV/VNAV DA	1174-1½	388 (400-1½)		NA	
LNAV MDA	1160-1	374 (400-1)		NA	
CIRCLING	1260-1	474 (500-1)	1260-1½ 474 (500-1½)	NA	

EC-2, 07 DEC 2017 to 04 JAN 2018

EC-2, 07 DEC 2017 to 04 JAN 2018

NM 7 14 21 28 35 42 49
 FT 42000 84000 126000 168000 210000 252000 294000

fporzd | k16g_r6cir (TEST-NOV2012) | 27 Feb 2018 10:43:30 | 1" = 41666.7 feet (MAP)



Airport ID:	K16G	FM 9			
Apt Name:	SENECA COUNTY	No	SEGMENT	OBSTRUCTION	ELEV
City:	TIFFIN	1	INTERMEDIATE	TOWER	1293
State:	OH	6	HOLD-IN-LIEU OF PT	TOWER	1324
Proc ID:	RNAV (GPS) RWY 6	4	LNAV/VNAV FINAL	TREE	904
Amdt #:	ORIG-B		MISSED APCH	ASC	
Scale:	1:500,000	8	MISSED LVL SFC	AAO	1050
		#	MISSED HOLDING	TOWER	1163

