


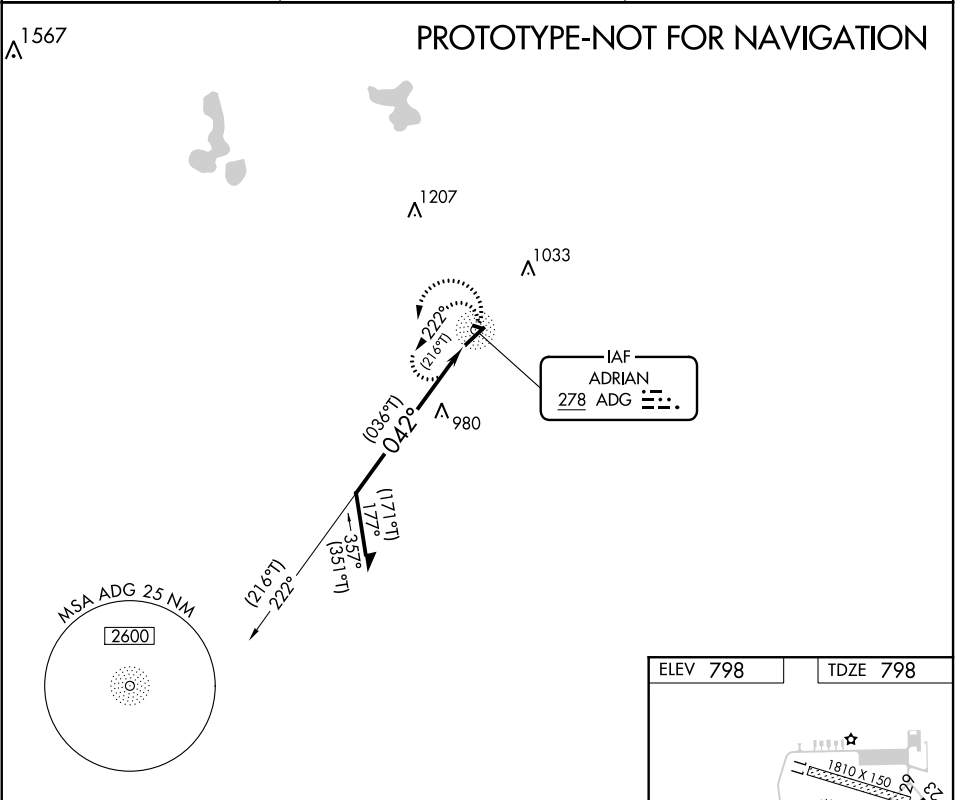
Flight Procedure Tracking Form		Action: FLIGHT CHECK	Task Type: IAP	Date Open: 10/17/2017	Task #: 201710103445800K002	Request #: 20171010344580
Procedure: NDB RWY 5 AMDT 0A			Airport ID: KADG	Airport: LENAWEE COUNTY		Reimbursable #: NO
City: ADRIAN	ST: MI	GPS #:	Estimated Chart Date: 05/24/2018		FICO #:	
Fac ID: N/A		Fac. Type:			Specialist: WILLIAM HANBY	
Procedure Review						
	Rec'd	Rel'd	Full Name	Comments		
Lead:	11/08/2017	01/11/2018	DION LANCIA			
QA:	01/11/2018					
Liaison:						
Procedure Comments: ENROUTE-NON Remark Type: INFORMATION AIRWAY CLEAN-UP PROJECT (CLE/DET METROPLEX/VOR MON). FINAL CONTROLLING OBSTACLE CHANGED FROM 980 ANTENNA 414719N/0841035W TO 980 TOWER 414909N/0840614W. CONTACT MANAGER: DION LANCIA 405-954-1267.						

ADG NDB	APP CRS	Rwy Idg	5001
278	042°	TDZE	798
		Apt Elev	798

NDB RWY 5
LENAAWEE COUNTY (ADG)

<div><div>T</div><div>NA</div></div> <div>RADAR required for procedure entry.</div>	MISSED APPROACH: Climbing left turn to 2500 in ADG NDB holding pattern.
---	---

ASOS 118.375	TOLEDO APP CON 134.35 317.55	UNICOM 122.8 (CTAF) 0
-----------------	---------------------------------	--------------------------



Remain within 10 NM		ADG NDB	2500	ADG
2500		(216°T) 222°	(036°T) 042°	
CATEGORY	A	B	C	D
S-5	1380-1	582 (600-1)	1380-1¾	582 (600-1¾)
CIRCLING	1380-1	582 (600-1)	1380-1¾	1380-2
			582 (600-1¾)	582 (600-2)

ELEV 798

TDZE 798

HIRL Rwy 5-23 0
REIL Rwy 5 0

ADRIAN, MICHIGAN


AL-5555 (FAA)

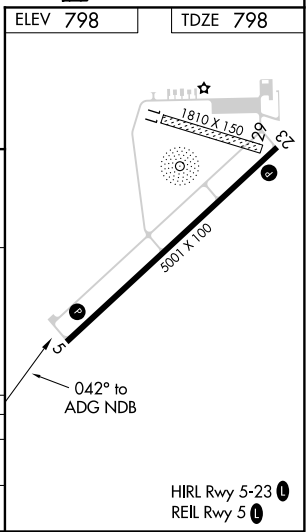
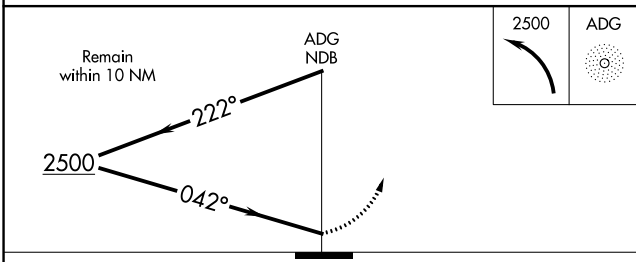
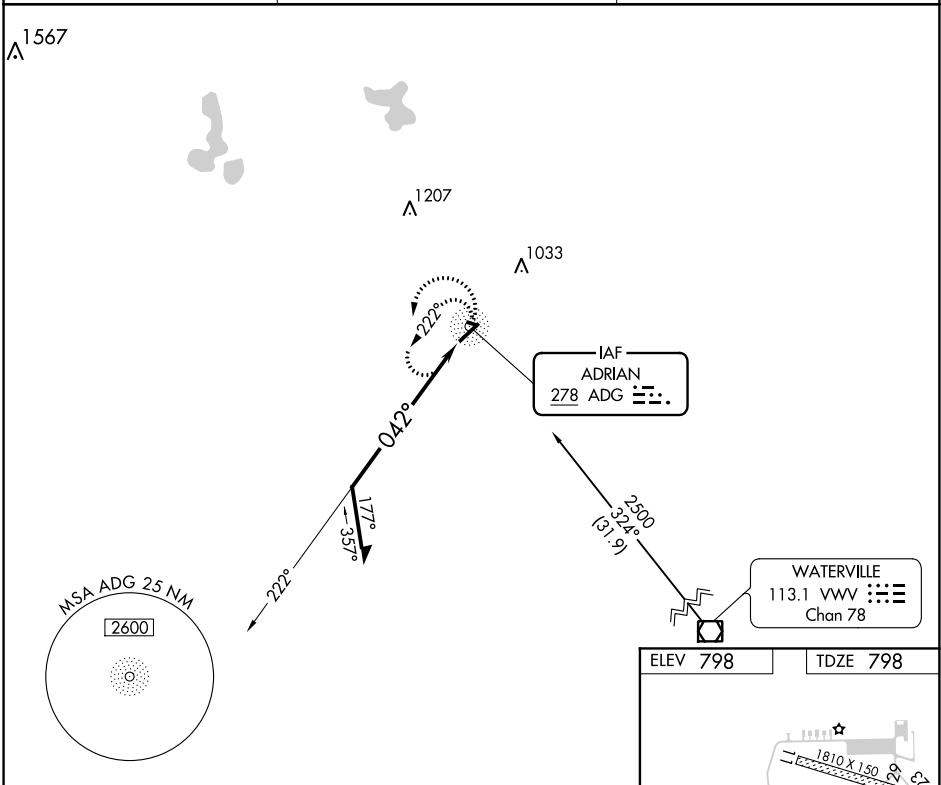
17117

ADG NDB	APP CRS	Rwy Idg	5001
<u>278</u>	<u>042°</u>	TDZE	798
		Apt Elev	798

NDB RWY 5
LENAAWEE COUNTY (ADG)

 NA	MISSED APPROACH: Climbing left turn to 2500 in ADG NDB holding pattern.
---	---

ASOS 118.375	TOLEDO APP CON 134.35 317.55	UNICOM 122.8 (CTAF) 
-----------------	---------------------------------	--



CATEGORY	A	B	C	D
S-5	1380-1	582 (600-1)	1380-1½ 582 (600-1½)	1380-1¾ 582 (600-1¾)
CIRCLING	1380-1	582 (600-1)	1380-1½ 582 (600-1½)	1380-2 582 (600-2)

ADRIAN, MICHIGAN
Orig 30DEC99

41° 52'N-84° 05'W

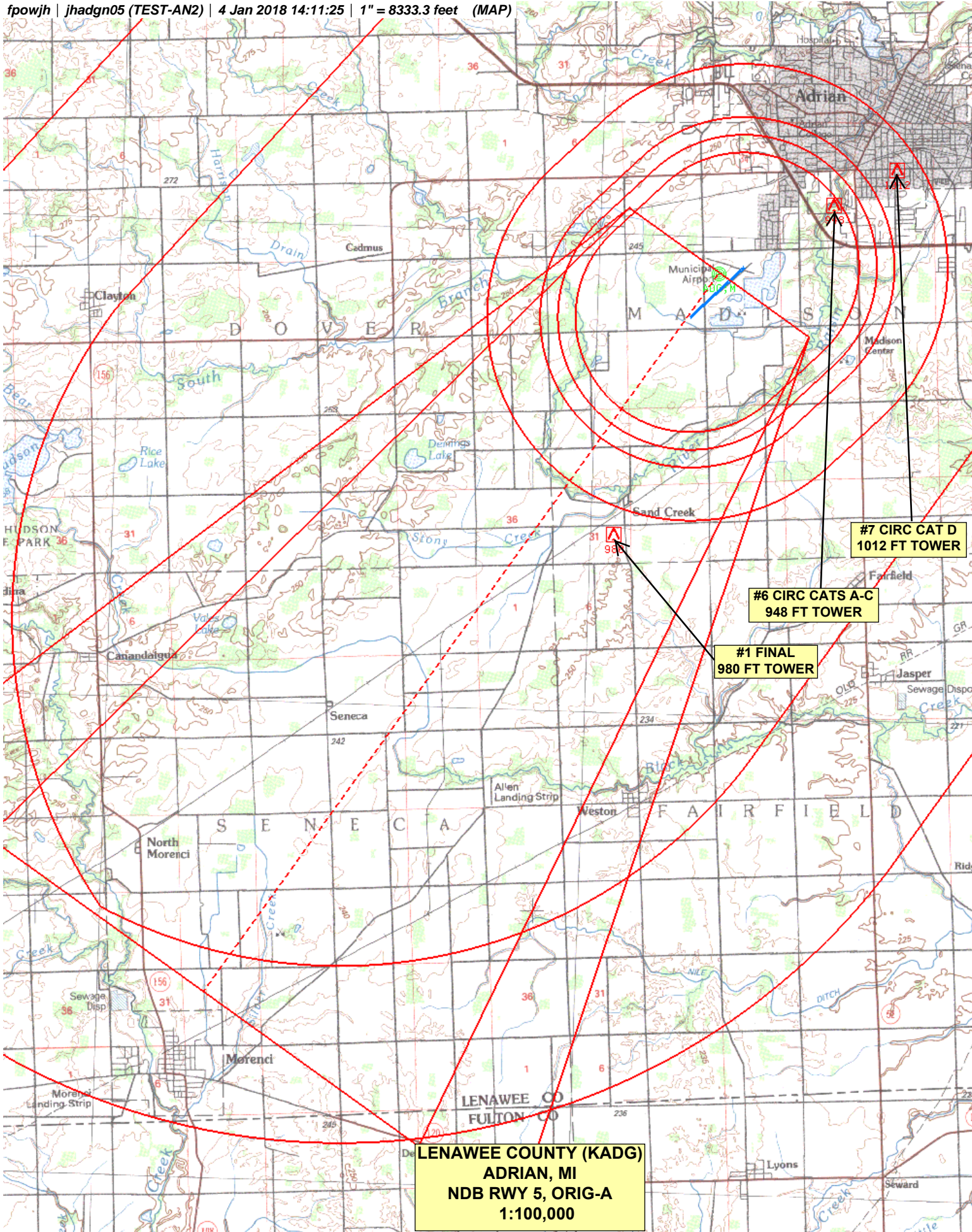
LENAAWEE COUNTY (ADG)
NDB RWY 5

EC-1, 04 JAN 2018 to 01 FEB 2018

EC-1, 04 JAN 2018 to 01 FEB 2018

NM 1 2 3 4 5 6 7 8 9 10
FT 8000 16000 24000 32000 40000 48000 56000 64000

fpowjh | jhadgn05 (TEST-AN2) | 4 Jan 2018 14:11:25 | 1" = 8333.3 feet (MAP)



NM 7 14 21 28 35 42 49
FT 42000 84000 126000 168000 210000 252000 294000

fpowjh | jhadgn05 (TEST-AN2) | 4 Jan 2018 14:05:45 | 1" = 41666.7 feet (MAP)

