



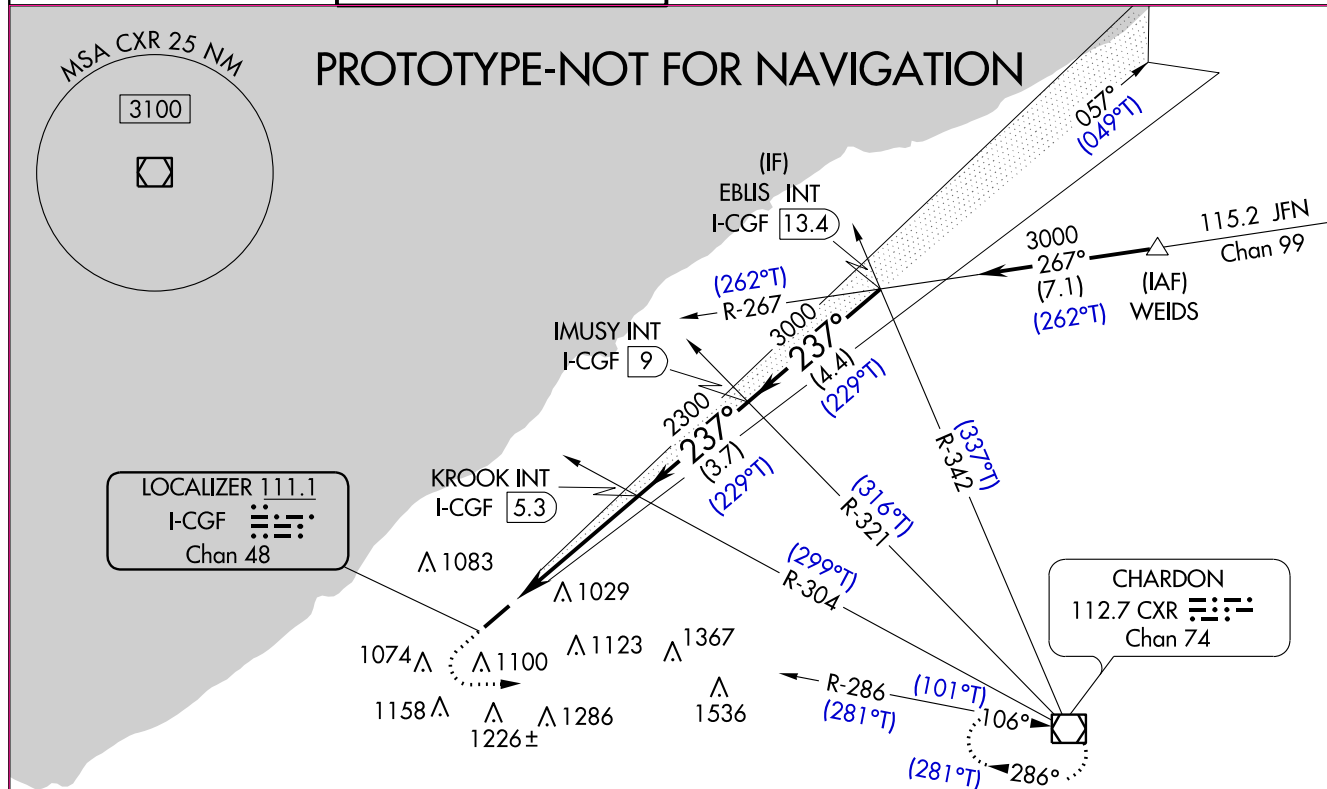
<b>Flight Procedure Tracking Form</b>		<b>Action:</b> AMENDMENT	<b>Task Type:</b> IAP	<b>Date Open:</b> 10/11/2017	<b>Task #:</b> 201710103445800E001	<b>Request #:</b> 20171010344580
<b>Procedure:</b> ILS OR LOC RWY 24 AMDT 15B			<b>Airport ID:</b> KCGF	<b>Airport:</b> CUYAHOGA COUNTY		<b>Reimbursable #:</b> NO
<b>City:</b> CLEVELAND	<b>ST:</b> OH	<b>GPS #:</b>	<b>Estimated Chart Date:</b> 05/24/2018		<b>FICO #:</b>	
<b>Fac ID:</b> CGF		<b>Fac. Type:</b> ILS			<b>Specialist:</b> DEANNA FIELDS	
<b>Procedure Review</b>						
	<b>Rec'd</b>	<b>Rel'd</b>	<b>Full Name</b>	<b>Comments</b>		
<b>Lead:</b>	11/20/2017	01/30/2018	DION LANCIA			
<b>QA:</b>	01/30/2018			2/16CTabaka		
<b>Liaison:</b>						
<b>Procedure Comments:</b>			<b>Remark Type:</b> INFORMATION			
<p>ENROUTE-NON</p> <p>CONTACT: DEZ SILAGYI, SUB-TEAM MANAGER, IFP TEAM 2, 405.954.5340 (OR)          JULIE MORGAN, MANAGER, AJV-542, INSTRUMENT FLIGHT PROCEDURES TEAM 2, 405.954.8568.</p> <p>THIS CANCELS NOTAM FDC 7/0487.</p>						

LOC/DME I-CGF <b>111.1</b> Chan <b>48</b>	APP CRS <b>237°</b>	Rwy Idg TDZE Apt Elev	<b>5102</b> <b>879</b> <b>879</b>
-------------------------------------------------	------------------------	-----------------------------	-----------------------------------------

# ILS or LOC RWY 24

CUYAHOGA COUNTY (CGF)

RNAV 1.		<div>MALSR</div> <div></div>	<div>MISSED APPROACH:</div> <div>Climb to 1600 then climbing left turn to 3100 via CXR VOR/DME R-286 to CXR VOR/DME and hold.</div>
RNAV 1-GPS or RADAR required for procedure entry. Aircraft not GPS equipped - RADAR required for procedure entry.			
<div><div><div>T</div><div>A</div></div><div>Rwy 24 helicopter visibility reduction below ¾ SM NA. Autopilot coupled approach NA below 2020. For inop MALSR increase S-LOC visibility all Cats to 1 SM.</div></div>			
CLEVELAND APP CON 125.35 354.025	COUNTY TOWER★ 118.5 (CTAF) 	GND CON 121.85	CLNC DEL 121.85



# OLD

CLEVELAND, OHIO

AL-5027 (FAA)

17229

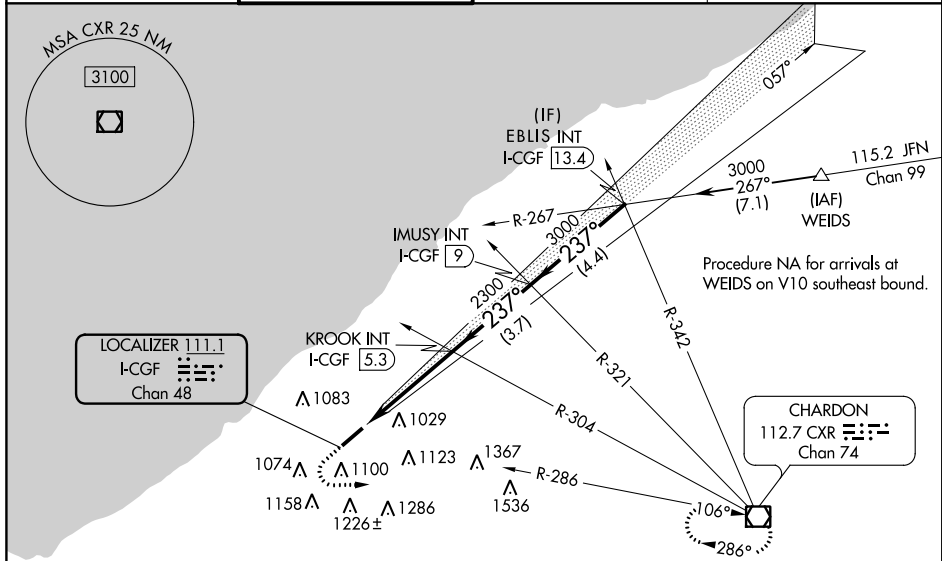
LOC/DME I-CGF <b>111.1</b> Chan 48	APP CRS <b>237°</b>	Rwy Idg TDZE Apt Elev	<b>5102</b> <b>879</b> <b>879</b>
------------------------------------------	------------------------	-----------------------------	-----------------------------------------

## ILS or LOC RWY 24

CUYAHOGA COUNTY (CGF)

<p><b>⚠</b> Autopilot coupled approach NA below 2020. Visibility reduction by helicopters NA. VDP NA with Cleveland-Hopkins Intl altimeter setting. When local altimeter setting not received, use Cleveland-Hopkins Intl altimeter setting and increase all DA 57 feet and all MDA 60 feet, increase Circling Cat C ¼ mile. For inoperative MALSR increase S-LOC visibility all Cats to 1 mile. For inoperative MALSR when using Cleveland-Hopkins Intl altimeter setting, increase S-ILS visibility all Cats to 1½ mile, increase S-LOC Cat A, B visibility to 1 mile.</p>	<p><b>MALSR</b></p> <p><b>⚠</b></p>	<p><b>MISSED APPROACH:</b> Climb to 1600 then climbing left turn to 3100 via CXR VOR/DME R-286 to CXR VOR/DME and hold.</p>
------------------------------------------------------------------------------------------------------------------------------------------------------------------------------------------------------------------------------------------------------------------------------------------------------------------------------------------------------------------------------------------------------------------------------------------------------------------------------------------------------------------------------------------------------------------------------	-------------------------------------	---------------------------------------------------------------------------------------------------------------------------------

CLEVELAND APP CON <b>125.35 354.025</b>	COUNTY TOWER★ <b>118.5 (CTAF) 0</b>	GND CON <b>121.85</b>	CLNC DEL <b>121.85</b>
--------------------------------------------	----------------------------------------	--------------------------	---------------------------



ELEV 879	<b>D</b>	TDZE 879
----------	----------	----------

237° 4.3 NM from FAF	947±
925	985±
974±	TWR 968
REIL Rwy 6	HIRL Rwy 6-24
FAF to MAP 4.3 NM	
Knots	60 90 120 150 180
Min:Sec	4:18 2:52 2:09 1:43 1:26

1600	3100	CXR R-286	CXR	KROOK INT I-CGF 5.3	IMUSY INT I-CGF 9	EBLIS INT I-CGF 13.4
*LOC only.	*I-CGF 2	2300	237°	237°	3000	GS 3.00° TCH 50
1 NM	3.3 NM	3.7 NM	4.4 NM			
CATEGORY	A	B	C	D		
S-ILS 24	1192-¾	313 (400-¾)				
S-LOC 24	1240-¾	361 (400-¾)				
CIRCLING	1400-1 521 (600-1)	1420-1 541 (600-1)	1420-1½ 541 (600-1½)	1480-2 601 (700-2)		

CLEVELAND, OHIO

Amdt 15A 02APR15

41°34'N-81°29'W

CUYAHOGA COUNTY (CGF)

## ILS or LOC RWY 24

EC-2, 07 DEC 2017 to 04 JAN 2018

EC-2, 07 DEC 2017 to 04 JAN 2018

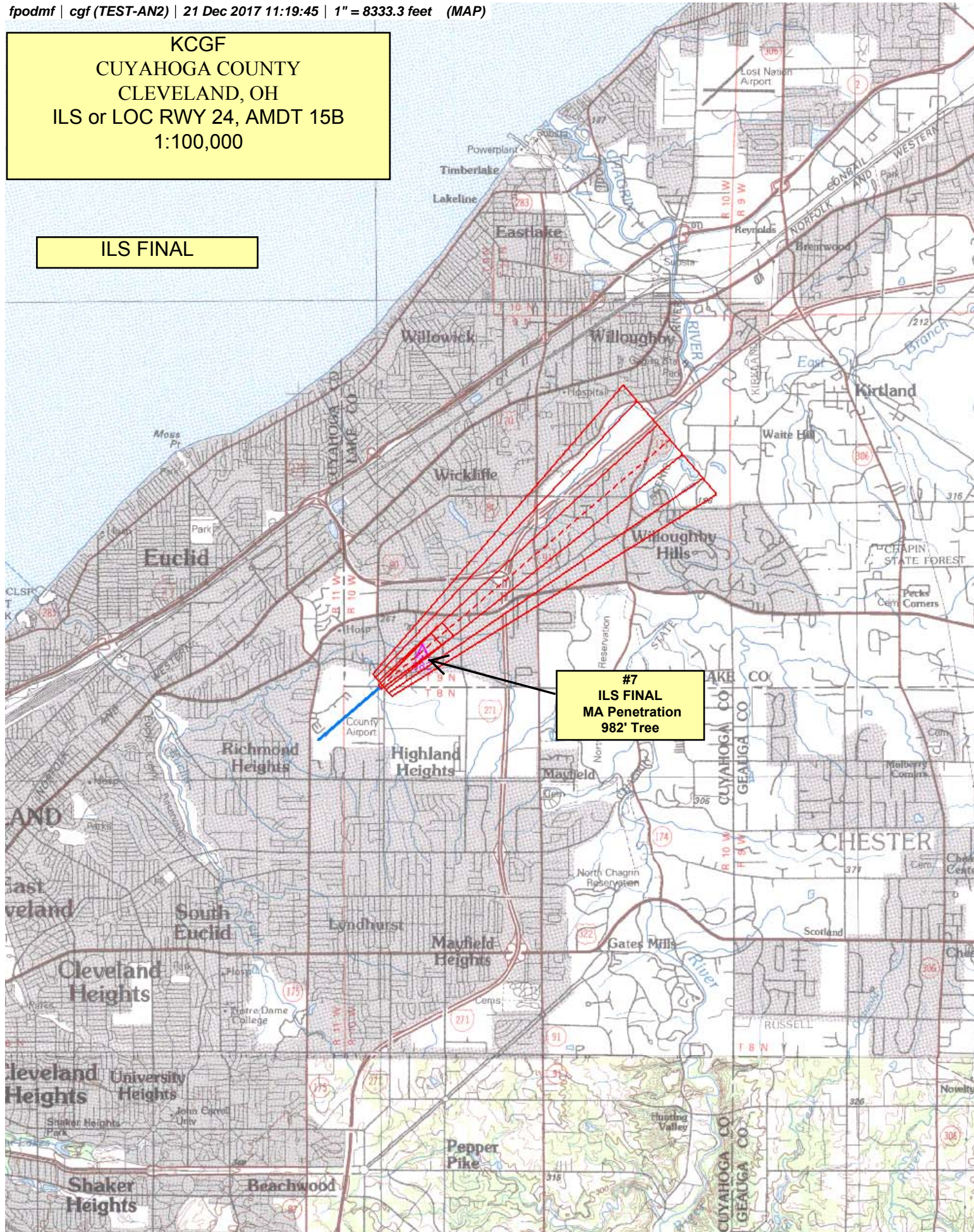


NM 1 2 3 4 5 6 7 8 9 10  
FT 8000 16000 24000 32000 40000 48000 56000 64000

fpodmf | cgf (TEST-AN2) | 21 Dec 2017 11:19:45 | 1" = 8333.3 feet (MAP)

KCGF  
CUYAHOGA COUNTY  
CLEVELAND, OH  
ILS or LOC RWY 24, AMDT 15B  
1:100,000

ILS FINAL





NM 1 2 3 4 5 6 7 8 9 10  
FT 8000 16000 24000 32000 40000 48000 56000 64000

fpodmf | cgf (TEST-AN2) | 2 Jan 2018 10:38:44 | 1" = 8333.3 feet (MAP)

KCGF  
CUYAHOGA COUNTY  
CLEVELAND, OH

ILS or LOC RWY 24, AMDT 15B  
1:100,000

