

Flight Procedure Tracking Form		Action: FLIGHT CHECK	Task Type: IAP	Date Open: 10/11/2017	Task #: 201710103445800C002	Request #: 20171010344580
Procedure: RNAV (GPS) RWY 28 AMDT 1			Airport ID: KJYM	Airport: HILLSDALE MUNI		Reimbursable #: NO
City: HILLSDALE	ST: MI	GPS #:	Estimated Chart Date: 05/24/2018		FICO #:	
Fac ID: N/A		Fac. Type:			Specialist: RALPH DUMAR	
Procedure Review						
	Rec'd	Rel'd	Full Name	Comments		
Lead:	11/08/2017					
QA:			J ZEDER 01/05/2018 16			
Liaison:						
Procedure Comments:			Remark Type: INFORMATION			
VOR MON PROGRAM KJYM ACTIVE DATA USED. REMARKS: MISSED HOLDING ALTITUDE LOWERED FROM 6000 TO 3100. CONTACT ROBERT HAMILTON 405-954-4608.						

HILLSDALE, MICHIGAN

AL-5484 (FAA)

FIG

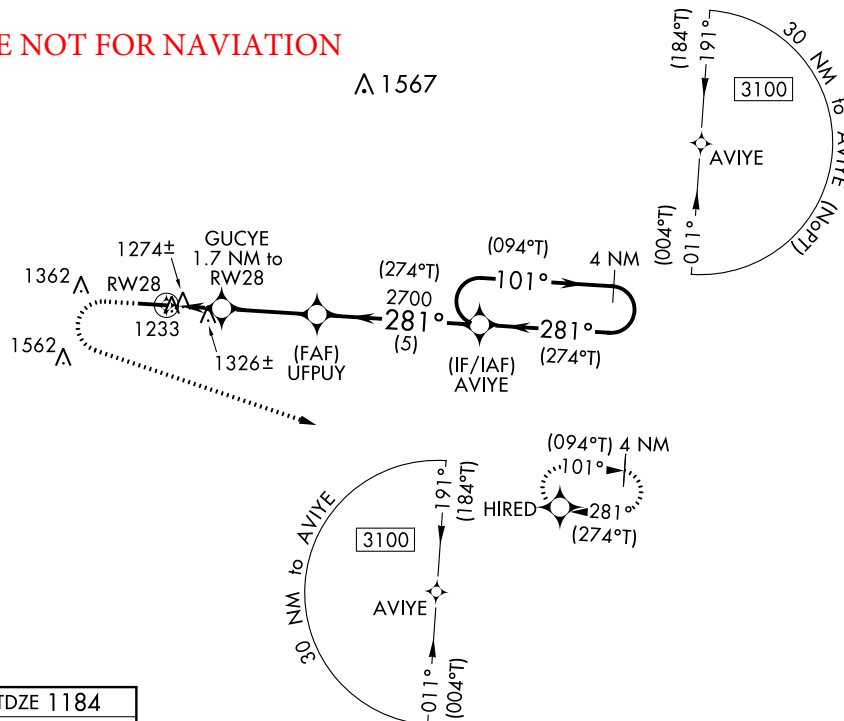
WAAS CH 50134 W28A	APP CRS 281°	Rwy Idg TDZE Apt Elev	5000 1184 1184
--	------------------------	-----------------------------	---

RNAV (GPS) RWY 28

HILLSDALE MUNI (JYM)

RNP APCH		MISSED APPROACH: Climb to 1700 then climbing left turn to 3100 direct HIRED and hold.
▼ Rwy 28 helicopter visibility reduction below ¾ SM NA. DME/DME RNP-0.3 NA. For uncompensated Baro-VNAV systems, LNAV/VNAV NA below -17°C or above 54°C.		
AWOS-3 121.025	TOLEDO APP CON 134.35 317.55	UNICOM 122.8 (CTAF) 0

PROTOTYPE NOT FOR NAVIATION



ELEV 1184	TDZE 1184
<p>1339±</p> <p>281° to RW28</p> <p>0.6% UP → 5000 X 100</p>	
<p>REIL Rwy 10 and 28 0</p> <p>HIRL Rwy 10-28 0</p>	

1700		3100	HIRED	AVIYE		4 NM Holding Pattern
*LNAV only		GUCYE	1.7 NM to RW28	UFPUY	2700	281° (274°T)
*1.1 NM to RW28		*1760		GP 3.00°		TCH 40
1.1		0.6	2.9 NM	5 NM		
CATEGORY	A	B	C	D		
LPV DA	1474-1		290 (300-1)		NA	
LNAV/VNAV DA	1489-1		305 (400-1)		NA	
LNAV MDA	1580-1		396 (400-1)		1580-1½ 396 (400-1½)	
CIRCLING	1640-1 456 (500-1)		1680-1 496 (500-1)		1680-1½ 496 (500-1½)	

HILLSDALE, MICHIGAN

Amdt 1 FIG

41°55'N-84°35'W

HILLSDALE MUNI (JYM)

RNAV (GPS) RWY 28

AUTOMATED AL-5484 RNAV (GPS) RWY 28

EC-1

01-09-18

COMPILER: CMN

REVIEWER: (JG)

DBL CHKR:

EFF: FIG

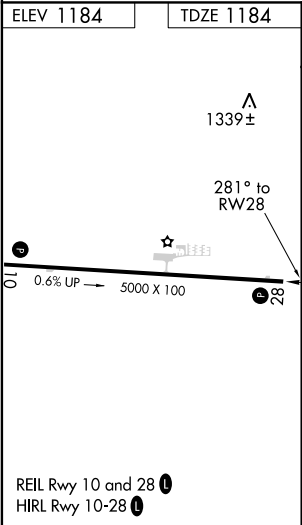
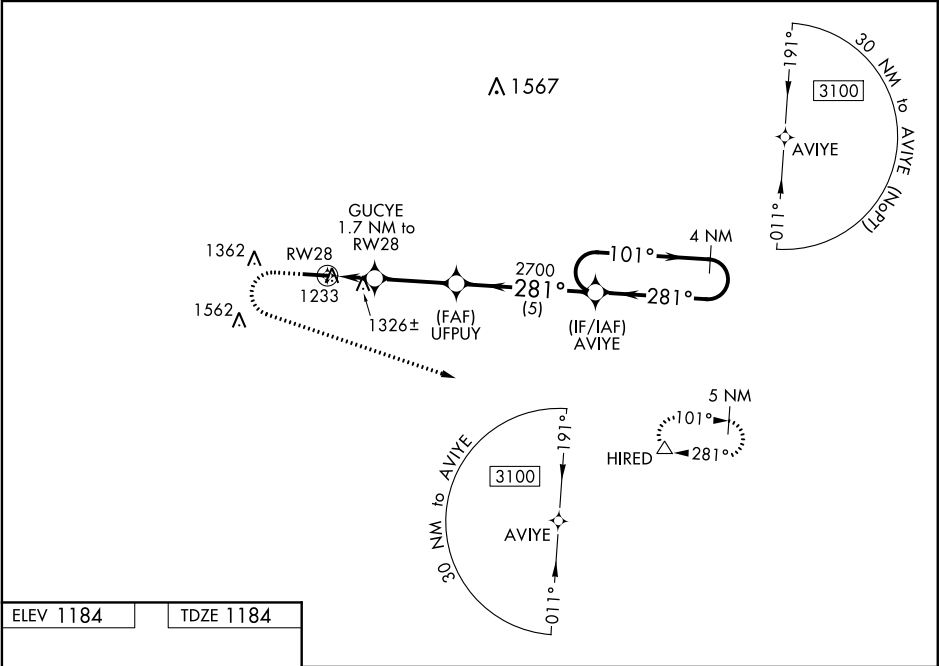
WAAS CH 50134 W28A	APP CRS 281°	Rwy Idg TDZE 1184 Apt Elev 1184
--	------------------------	---



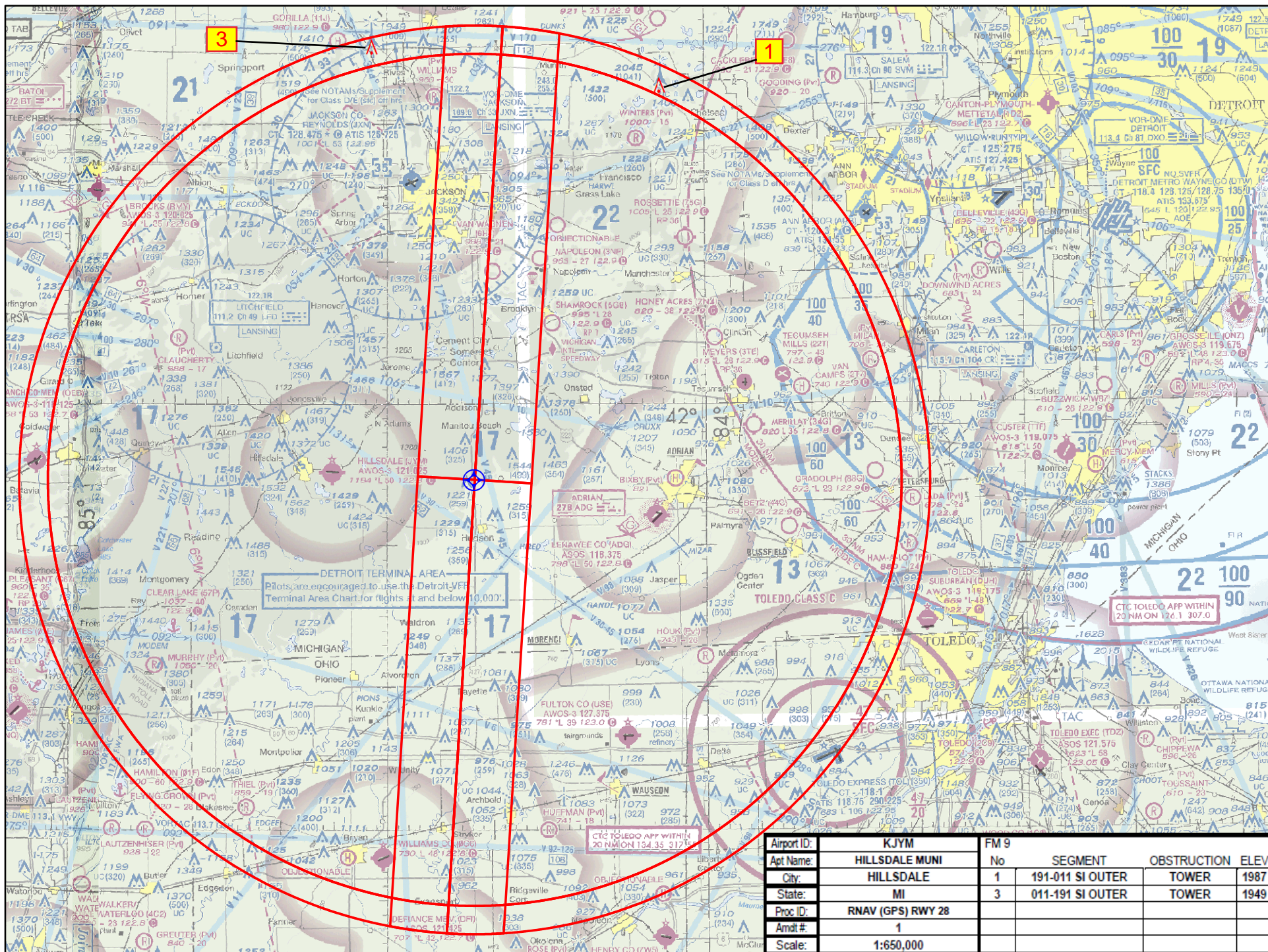
RNAV (GPS) RWY 28
HILLSDALE MUNI (JYM)

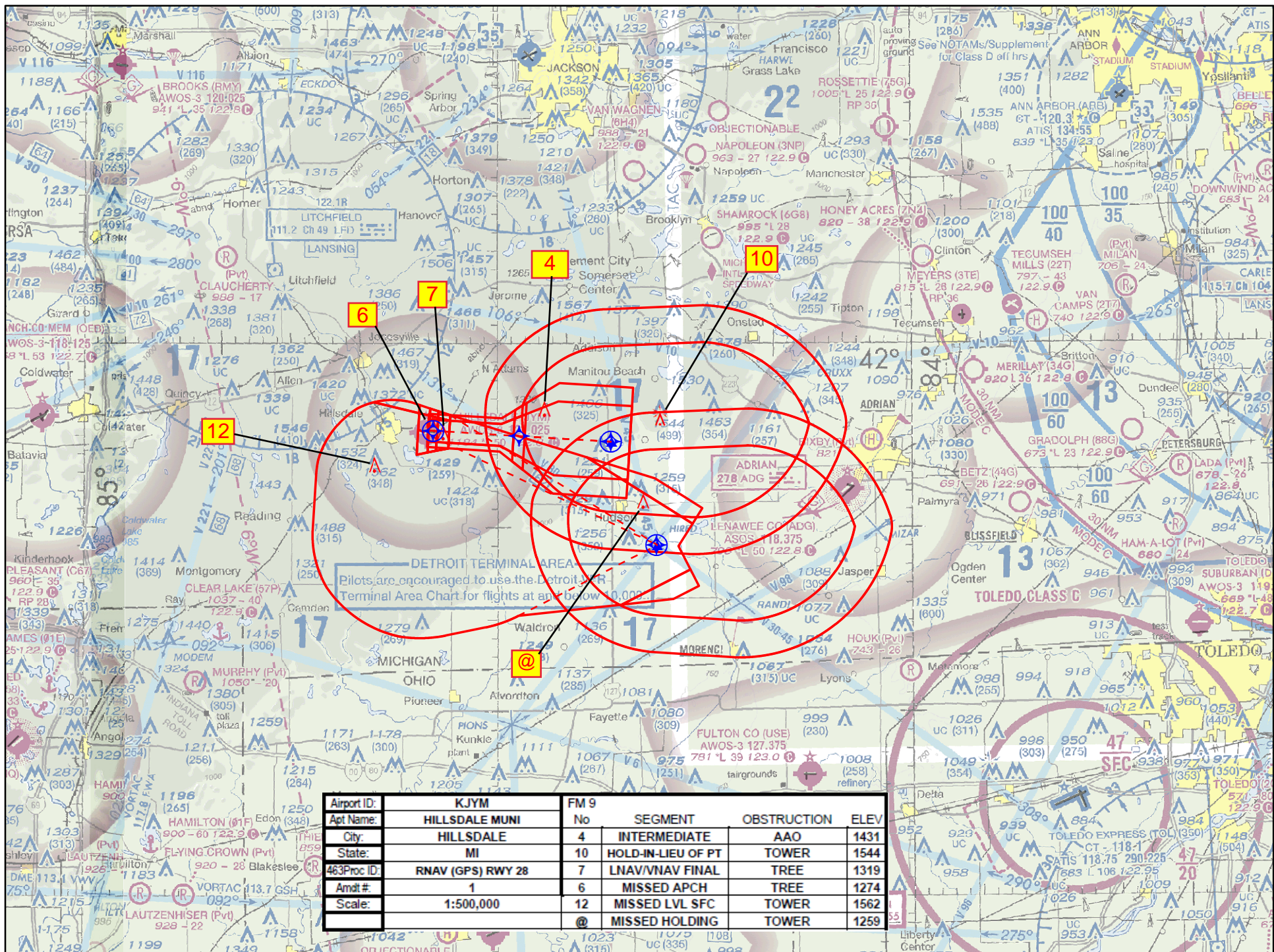
<p>▽</p> <p>For uncompensated Baro-VNAV systems, LNAV/VNAV NA below -17°C (2°F) or above 54°C (130°F). DME/DME RNP-0.3 NA. Rwy 28 helicopter visibility reduction below ¾ SM NA.</p>	<p>MISSED APPROACH: Climb to 1700, then climbing left turn to 6000 direct HIRED and hold, continue climb-in-hold to 6000.</p>
---	---

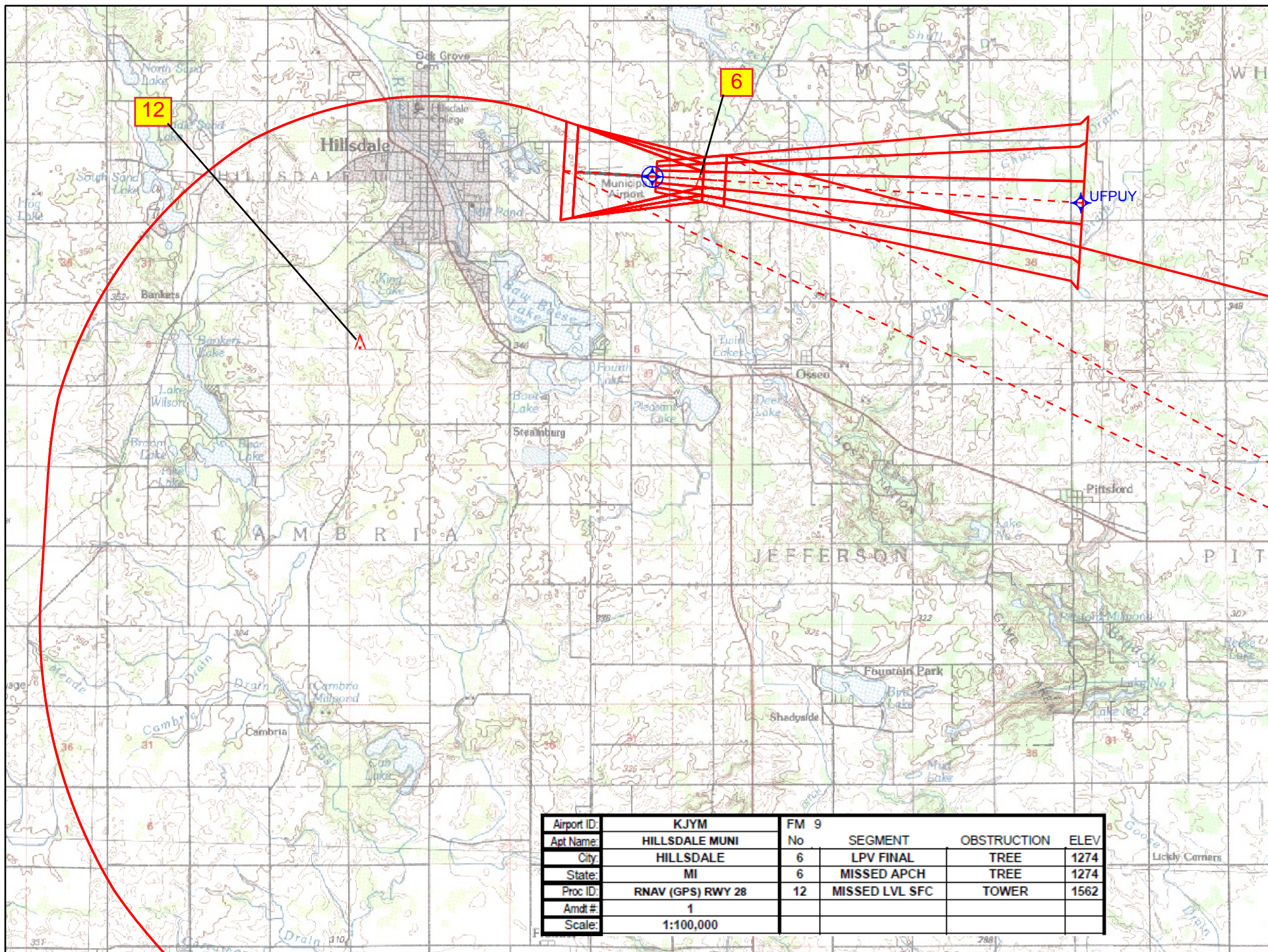
AWOS-3 121.025	TOLEDO APP CON 134.35 317.55	UNICOM 122.8 (CTAF) 0
--------------------------	--	---------------------------------

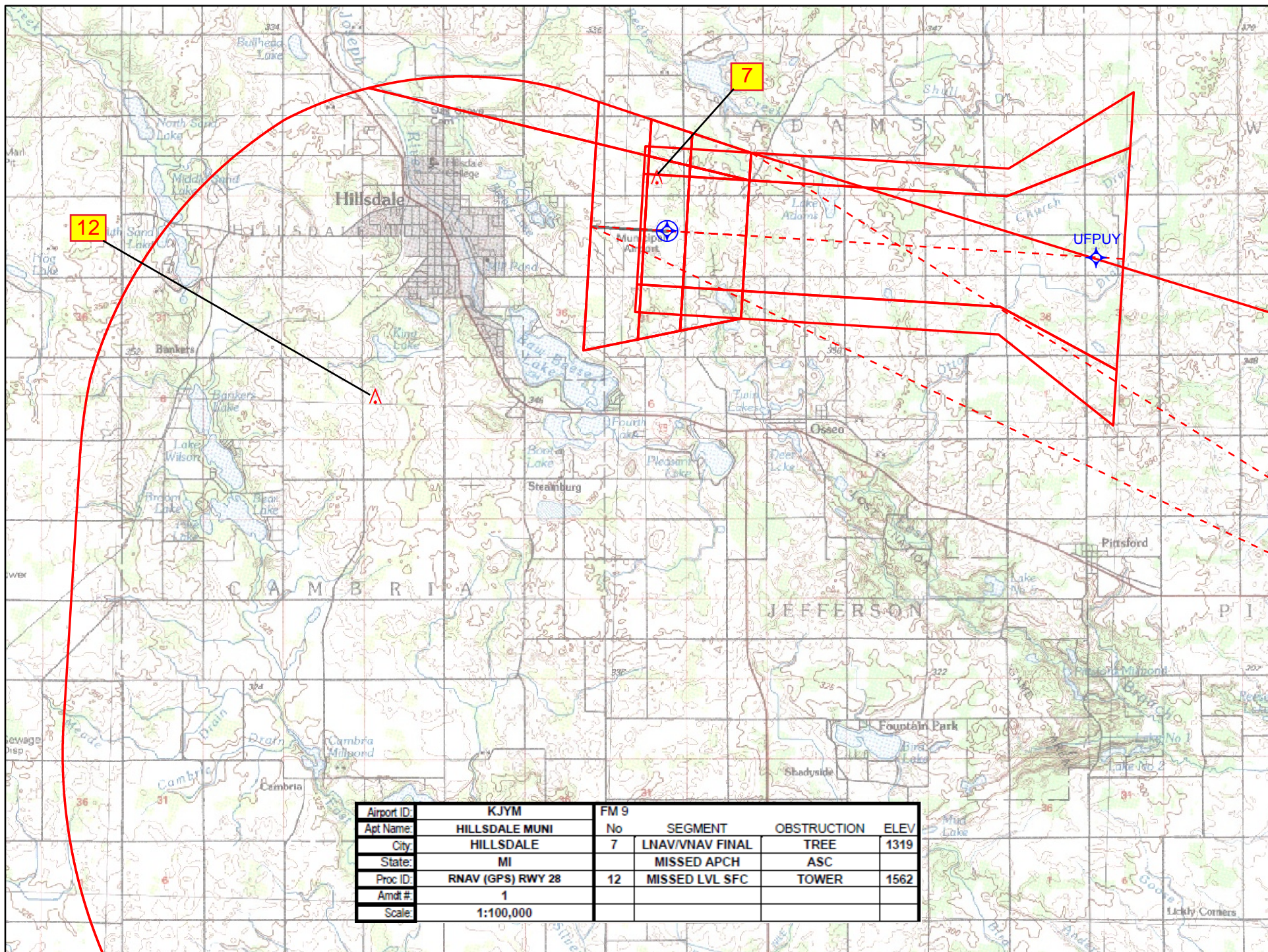


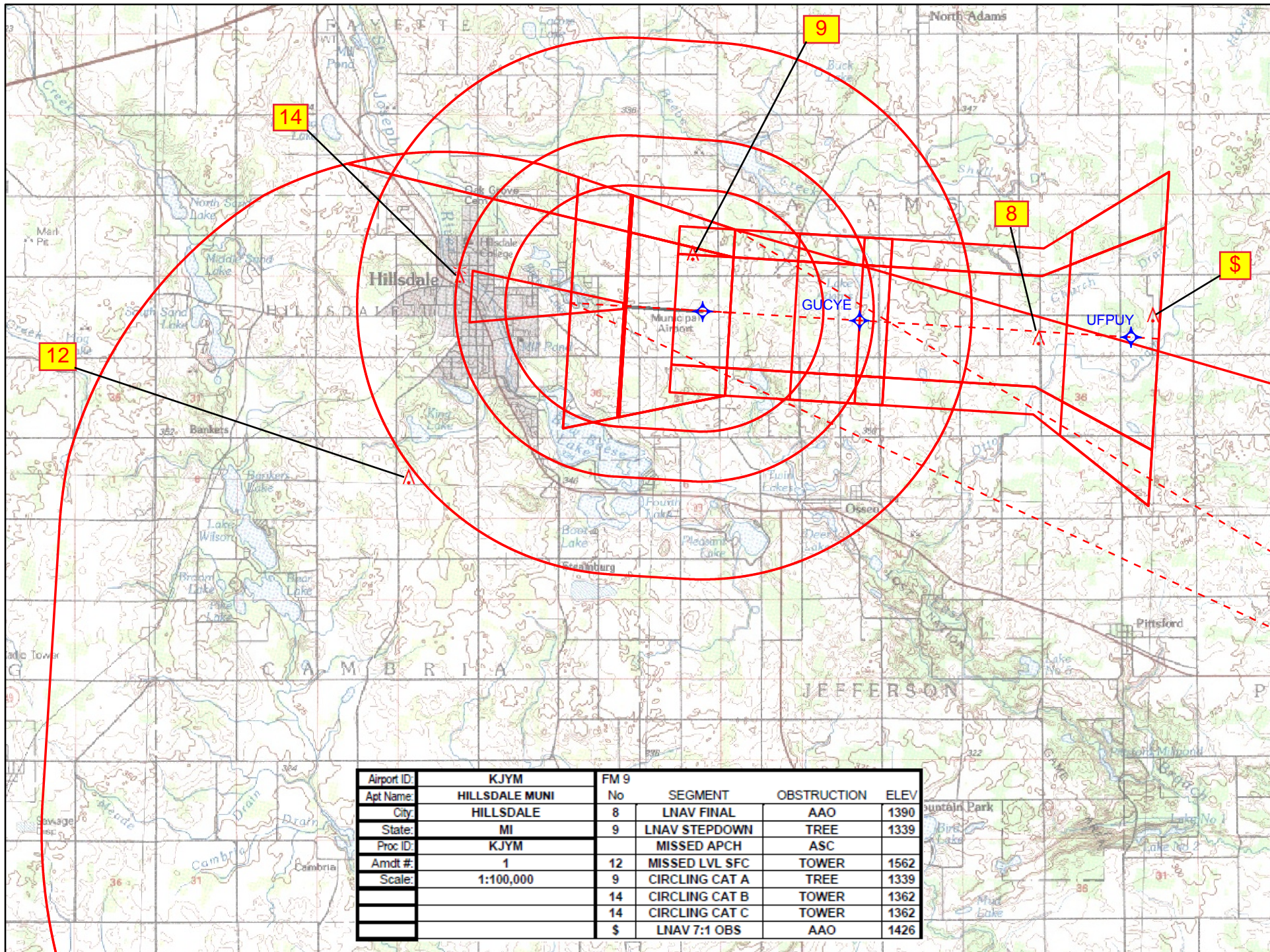
	1700	6000	HIRED	
	↑	↶	△	
*LNAV only	GUCYE 1.7 NM to RW28	UFPYU 2700	AVIYE 4 NM Holding Pattern	
*1.1 NM to RW28	*1760	2700	101° → 3100	GP 3.00° TCH 40
	1.1	0.6	2.9 NM	5 NM
CATEGORY	A	B	C	D
LPV DA	1474-1	290 (300-1)		NA
LNAV/VNAV DA	1561-1¼	377 (400-1¼)		NA
LNAV MDA	1580-1	396 (400-1)	1580-1⅛ 396 (400-1⅛)	NA
CIRCLING	1640-1 456 (500-1)	1720-1 536 (600-1)	1720-1½ 536 (600-1½)	NA











TERMINAL AIRSPACE DATA REQUIREMENTS

City: HILLSDALE Airport Name: HILLSDALE MUNI Procedure: RNAV (GPS) RWY 28 Docket #:	State: MI ID: KJYM Amendment: AMDT 1
ALL DIST TO 1/100 NM; ELEV TO NEAREST FT; COORD TO 1/100 SEC; DEG TO 1/100 DG.	
1. Distance from 2. Width of 3. True Course of 4. High Terrain in 5. Distance from 6. Width of 7. True Course of 8. High Terrain in 9. Threshold Coordinates (if straight-in) 10. ARP Coordinates 11. Runway Approach End and distance furthest from ARP: Runway 28 Distance 0.41 NM 12. FAF Coordinates	THLD to 1000' point 3.06 FINAL segment at 1000' point 1.20 FINAL segment containing 1000' point 273.60 FINAL segment containing 1000' point 1229 THLD to 1500' point 4.63 FINAL segment at 1500' point 2.14 FINAL segment containing 1500' point 273.60 FINAL segment containing 1500' point 1229 41 55 15.17 N / 084 34 39.11 W 41 55 16.69 N / 084 35 12.12 W 41 54 57.87 N / 084 28 27.39 W
Remarks: TAA: 30 NM RADIUS FROM IF/IAF AVIYE. IF/IAF AVIYE: 41 54 38.84 N / 084 21 46.38 W	