

Flight Procedure Tracking Form		Action: FLIGHT CHECK	Task Type: IAP	Date Open: 10/04/2017	Task #: 2017100427117601001	Request #: 20171004271176
Procedure: RNAV (GPS) RWY 9 AMDT 0B				Airport ID: KGDW	Airport: GLADWIN ZETTEL MEMORIAL	Reimbursable #: NO
City: GLADWIN	ST: MI	GPS #:	Estimated Chart Date: 03/29/2018		FICO #:	
Fac ID: N/A		Fac. Type:			Specialist: PETER GUIMOND	
Procedure Review						
	Rec'd	Rel'd	Full Name	Comments		
Lead:	10/09/2017		J ZEDER 12/20/2017			
QA:						
Liaison:						
Procedure Comments: ENROUTE-NON Remark Type: INFORMATION ACTIVE DATA USED. SPECIAL FLIGHT CHECK INSTRUCTIONS: ABBREVIATED AMDT, REQUEST TABLE TOP REVIEW. CONTACT: ROBERT HAMILTON, AJV-5422 LEAD, 405.954.4608						

RNAV (GPS) RWY 9

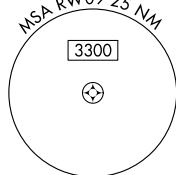
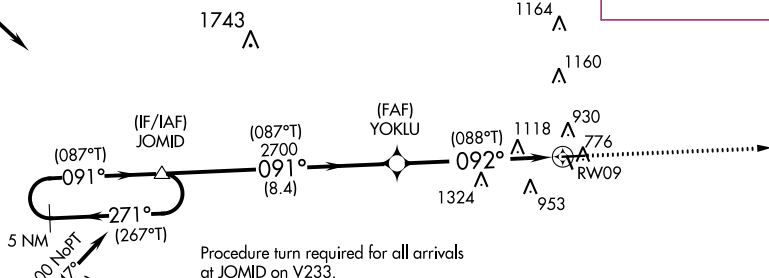
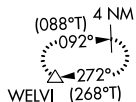
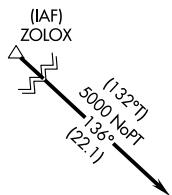
GLADWIN ZETTEL MEMORIAL (GDW)

MISSED APPROACH: Climb to 3000 direct WELVI and hold.

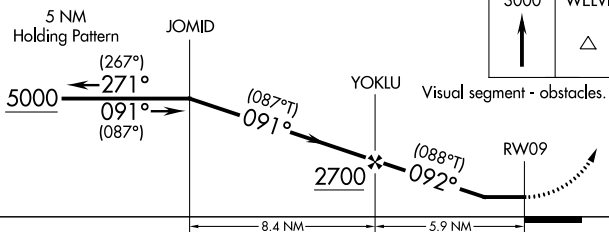
UNICOM
122.8 (CTAF) **L**

PROTOTYPE-NOT FOR NAVIGATION

MISSED APCH FIX



ELEV	774		TDZE	774
------	-----	--	------	-----



CATEGORY	A	B	C	D
LP MDA	1440-1	666 (700-1)	1440-1 $\frac{7}{8}$	666 (700-1 $\frac{7}{8}$)
LNAV MDA	1440-1	666 (700-1)	1440-1 $\frac{7}{8}$	666 (700-1 $\frac{7}{8}$)
CIRCLING	1440-1 666 (700-1)	1500-1 726 (800-1)	1500-2 726 (800-2)	1500-2 $\frac{1}{4}$ 726 (800-2 $\frac{1}{4}$)

MIRL Rwy 9-27 **L**
REIL Rwy 9 and 27 **L**

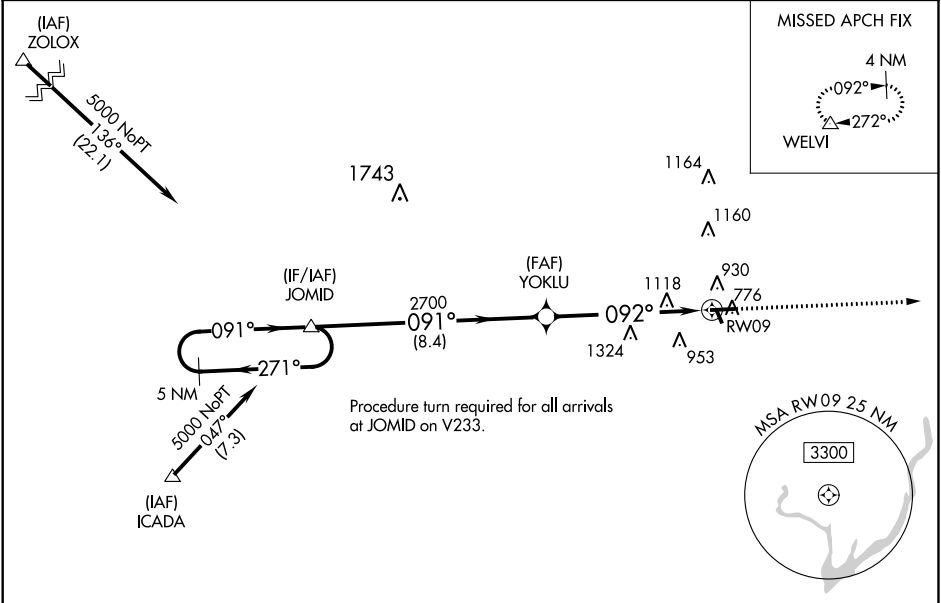
WAAS CH 48826 W09A	APP CRS 092°	Rwy Idg TDZE Apt Elev	4699 774 774
--	------------------------	-----------------------------	---

OLD

RNAV (GPS) RWY 9
GLADWIN ZETTEL MEMORIAL (GDW)

<p>⚠ NA DME/DME RNP-0.30 NA. Visibility reduction by helicopters NA. Use Mount Pleasant altimeter setting; when not received, use Midland altimeter setting and increase all MDA 20 feet. Increase LP and LNAV MDA Cat C and D visibility $\frac{1}{8}$ mile and Circling Cat C and D visibility $\frac{1}{4}$ mile. When VGSI inop, Circling Rwy 27 NA at night. When VGSI inop, Straight-in/Circling Rwy 9 procedure NA at night.</p>	<p>MISSED APPROACH: Climb to 3000 direct WELVI and hold.</p>
--	--

<p>SAGINAW APP CON ★ 126.45 235.625</p>	<p>UNICOM 122.8 (CTAF) 0</p>
--	---



					ELEV 774		TDZE 774		
<div><div>5 NM Holding Pattern</div><div><div>5000</div><div>←271°</div><div>091°→</div></div><div>JOMID</div><div><div>091°</div><div>YOKLU</div><div>3.00° TCH 40</div><div>2700</div><div>092°</div><div>RW09</div></div><div>VGSI and descent angles not coincident (VGSI Angle 3.00/TCH 25).</div><div><div>8.4 NM</div><div>5.9 NM</div></div></div>					<div>3000</div> <div>↑</div>		<div>WELVI</div> <div>△</div>		
<div><div>51</div><div>2680 X 150</div><div>33</div><div>092° to RW09</div><div>4699 X 75</div><div>27</div></div>									
CATEGORY		A		B		C		D	
LP MDA		1440-1		666 (700-1)		1440-1 $\frac{7}{8}$		666 (700-1 $\frac{1}{2}$)	
LNAV MDA		1440-1		666 (700-1)		1440-1 $\frac{7}{8}$		666 (700-1 $\frac{1}{2}$)	
CIRCLING		1440-1 666 (700-1)		1500-1 726 (800-1)		1500-2 726 (800-2)		1500-2 $\frac{1}{4}$ 726 (800-2 $\frac{1}{4}$)	
MIRL Rwy 9-27 0									
REIL Rwy 9 and 27 0									

EC-1, 09 NOV 2017 to 07 DEC 2017

EC-1, 09 NOV 2017 to 07 DEC 2017