

| | | | | | | |
|--|---------------|--------------------------------|---|------------------------------------|---------------------------------------|-------------------------------------|
| Flight Procedure Tracking Form | | Action: FLIGHT CHECK | Task Type: IAP | Date Open: 09/27/2017 | Task #: 2017092726331801007 | Request #: 20170927263318 |
| Procedure: VOR RWY 18 AMDT 7E | | | Airport ID: KSBN | Airport: SOUTH BEND INTL | | Reimbursable #: NO |
| City: SOUTH BEND | ST: IN | GPS #: | Estimated Chart Date: 09/13/2018 | | FICO #: | |
| Fac ID: GIJ | | Fac. Type: VORTAC | | | Specialist: JOSHUA LEETE | |
| Procedure Review | | | | | | |
| | Rec'd | Rel'd | Full Name | Comments | | |
| Lead: | 09/28/2017 | | | QUALITY 10 CHECKED | | |
| QA: | | | | | | |
| Liaison: | | | | | | |
| Procedure Comments: ENROUTE-NON Remark Type: INFORMATION MINOR AMENDMENT TO UPDATE CIRCLING ONLY. CONTACT: ROBERT HAMILTON (405) 954-4608. | | | | | | |

VOR RWY 18
SOUTH BEND INTL (SBN)

MISSED APPROACH: Climbing right turn to 2400 direct GJJ VORTAC and hold.

[illegible]

PROTOTYPE-NOT FOR NAVIGATION

2400

GIJ

VGS and descent angles not coincident
(VGS Angle 3.00/TCH 49).

GIJ VORTAC

Remain within 10 NM

1001°
001°

2400

181°
(181°)

1900

GIJ
1.8

3.31°
TCH 50

1.2

1.8 NM

| CATEGORY | A | B | C | D |
|-------------------|--------------------|---|--|--|
| S-18 | 1260-1 462 (500-1) | | 1260-1 ³ / ₈ 462 (500-1 ³ / ₈) | 1260-1 ¹ / ₂ 462 (500-1 ¹ / ₂) |
| C CIRCLING | 1280-1 482 (500-1) | | 1440-1 ³ / ₄ 642 (700-1 ³ / ₄) | 1500-2 ¹ / ₄ 702 (800-2 ¹ / ₄) |

| | | | |
|--------------|-------------|----------|------|
| VORTAC GIJ | APP CRS | Rwy Idg | 7101 |
| <u>115.4</u> | <u>181°</u> | TDZE | 799 |
| Chan 101 | | Apt Elev | 799 |

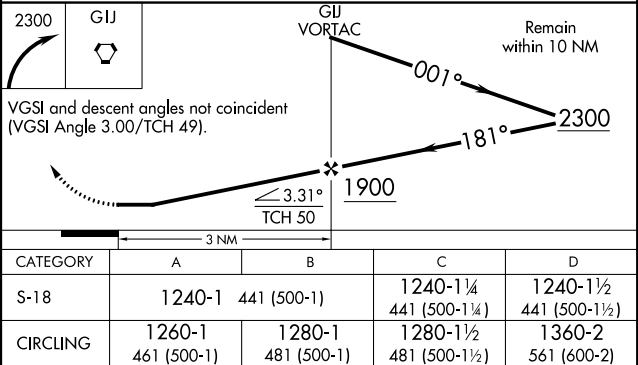
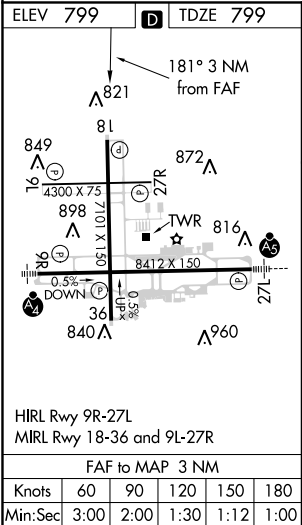
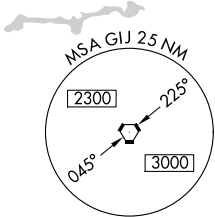
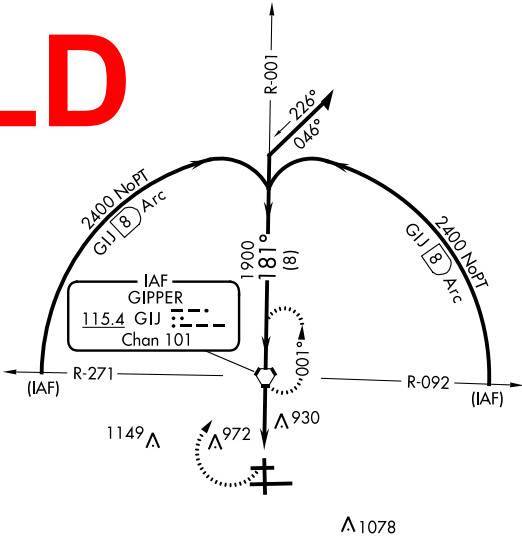
VOR RWY 18
SOUTH BEND INTL (SBN)



MISSED APPROACH: Climbing right turn to 2300 direct GIJ VORTAC and hold.

| | | | | |
|-----------------|--------------------------------------|--|------------------|-------------------|
| ATIS 120.675 | SOUTH BEND APP CON ★ 118.55 257.8 | SOUTH BEND TOWER ★ 118.9 (CTAF) 257.8 | GND CON 121.7 | CLNC DEL 121.9 |
|-----------------|--------------------------------------|--|------------------|-------------------|

OLD



| | | | | |
|---------------------------|-----------|------------|------------|-------------|
| Airport ID: KSBN | <u>NO</u> | <u>SEG</u> | <u>OBS</u> | <u>ELEV</u> |
| Apt Name: SOUTH BEND INTL | 8 | CAT A CIR | TREE | 966 |
| City: SOUTH BEND | 9 | CAT B CIR | TANK | 972 |
| State: IN | 10 | CAT C CIR | BLDG | 1078 |
| Proc ID: VOR RWY 18 | 6 | CAT D CIR | TWR | 1149 |
| Amdt: 7E | | | | |
| Date: 13 SEP 2018 | | | | |
| Scale: 1:100,000 | | | | |

