

Flight Procedure Tracking Form		Action: FLIGHT CHECK	Task Type: IAP	Date Open: 08/17/2017	Task #: 2017081735130001001	Request #: 20170817351300
Procedure: ILS OR LOC RWY 13 AMDT 4				Airport ID: KPVU	Airport: PROVO MUNI	Reimbursable #: NO
City: PROVO	ST: UT	GPS #:	Estimated Chart Date: 02/01/2018		FICO #:	
Fac ID: PVU		Fac. Type: ILS			Specialist: DEANNA FIELDS	
Procedure Review						
	Rec'd	Rel'd	Full Name	Comments		
Lead:	09/06/2017			<div>QUALITY</div> <div>10</div> <div>CHECKED</div>		
QA:						
Liaison:						
Procedure Comments: ENROUTE-NON Remark Type: INFORMATION CONTACT: JACOB POWERS, SUB-TEAM MANAGER, IFP TEAM 3, 405.954.8702 (OR) PATRICK MULQUEEN, MANAGER, AJV-543, INSTRUMENT FLIGHT PROCEDURES TEAM 3, 405.954.4073.						

FIG

ILS or LOC RWY 13
PROVO MUNI (PVU)

MISSED APPROACH: Climb to 6200 then climbing right turn to 9000 direct FFU VORTAC and hold.
Missed approach requires minimum climb of 300 feet per NM to 8700.

[illegible]

VGSI and ILS glidepath not coincident
(VGSI Angle 3.00°/TCH 42).
*LOC only

CATEGORY	A	B	C	D
S-ILS 13		5077-15 $\frac{1}{8}$	580 (600-1 $\frac{1}{8}$)	
# S-ILS 13		4697-3 $\frac{1}{4}$	200 (200-3 $\frac{1}{4}$)	
S-LOC 13	5220-1	723 (800-1)	5220-2	723 (800-2)
# S-LOC 13		4820-1	323 (400-1)	
C CIRCLING	5220-1	723 (800-1)	5220-2 723 (800-2)	5260-2 $\frac{1}{2}$ 763 (800-2 $\frac{1}{2}$)

PROVO MUNI (PVU)
ILS or LOC RWY 13

OLD

PROVO, UTAH

AL-683 (FAA)

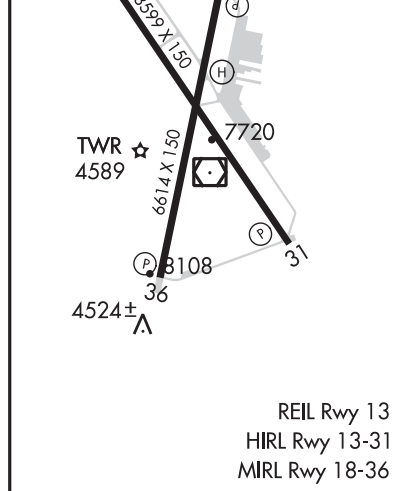
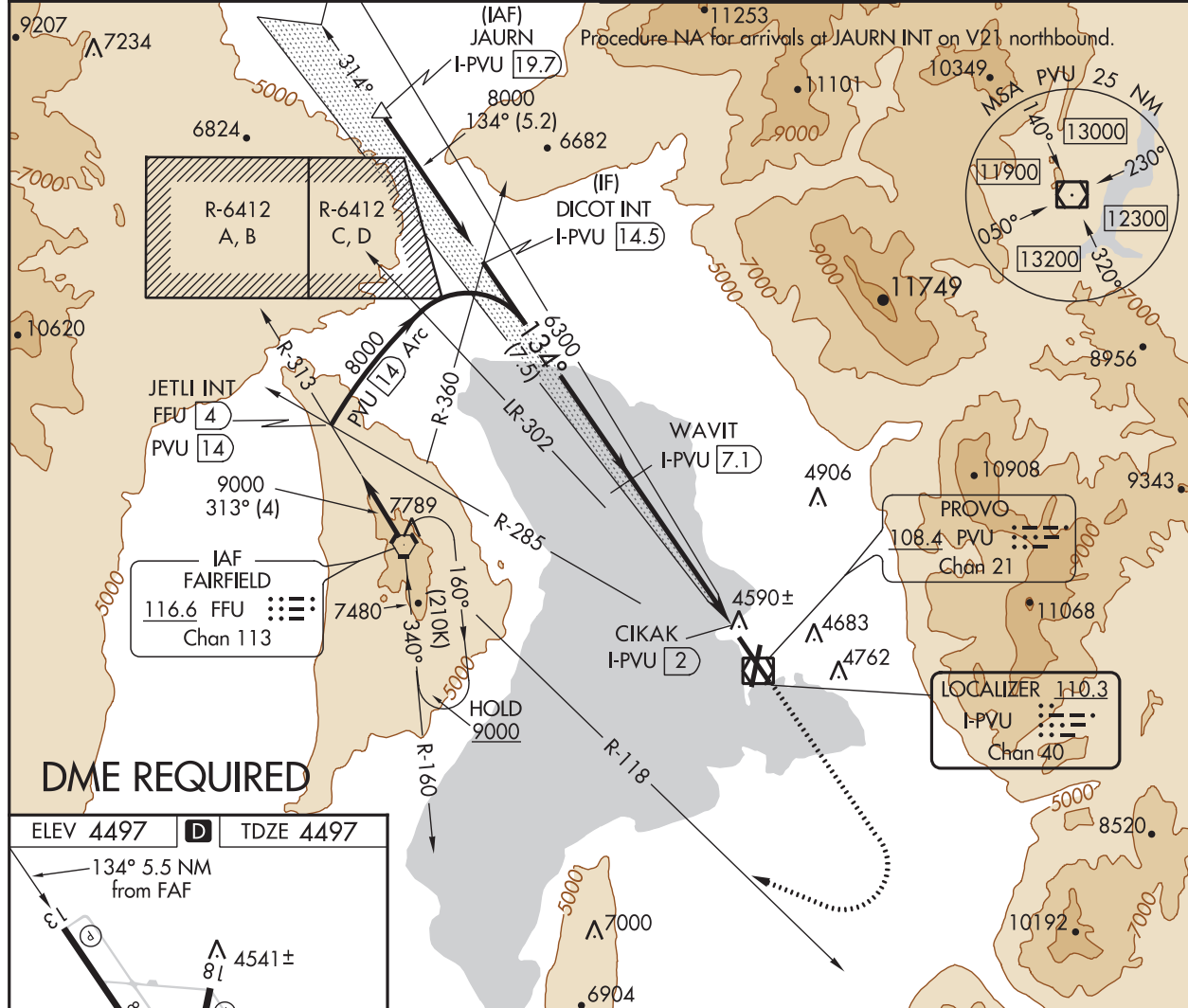
17061



LOC/DME I-PVU 110.3 Chan 40	APP CRS 134°	Rwy Idg TDZE Apt Elev 8599 4497 4497
--	------------------------	--

ILS or LOC RWY 13 PROVO MUNI (PVU)

<p>⚠ Circling to Rwy 18 NA at night. Circling NA east of Rws 18 and 36. Use I-PVU DME when on localizer course. DME REQUIRED.</p>	<p>MISSED APPROACH: Climb to 6100 then climbing right turn to 9000 on heading 300° and on FFU VORTAC R-118 to FFU VORTAC and hold.</p>
--	--

ATIS 135.175	SALT LAKE CITY APP CON 118.85 233.7	PROVO TOWER ★ 125.3 (CTAF)	GND CON 119.4
------------------------	---	--------------------------------------	-------------------------



DICOT INT I-PVU 14.5 FFU 8.3		VGSI and ILS glidepath not coincident (VGSI Angle 3.00/TCH 42).		6100 ↑	9000 hdg 300°	FFU R-118	FFU 
		WAVIT I-PVU 7.1					
8000		6300		CIKAK I-PVU 2			
GS 3.00° TCH 50		6300					
7.5 NM		5 NM		0.5			
CATEGORY	A	B	C	D			
S-ILS 13	4697-1		200 (200-1)				
S-LOC 13	4820-1		323 (400-1)				
 CIRCLING	4940-1 443 (500-1)	4960-1 463 (500-1)	5120-1¾ 623 (700-1¾)	5260-2½ 763 (800-2½)			

SW-4, 14 SEP 2017 to 12 OCT 2017

SW-4, 14 SEP 2017 to 12 OCT 2017

PROVO, UTAH
Amdt 3 02MAR17

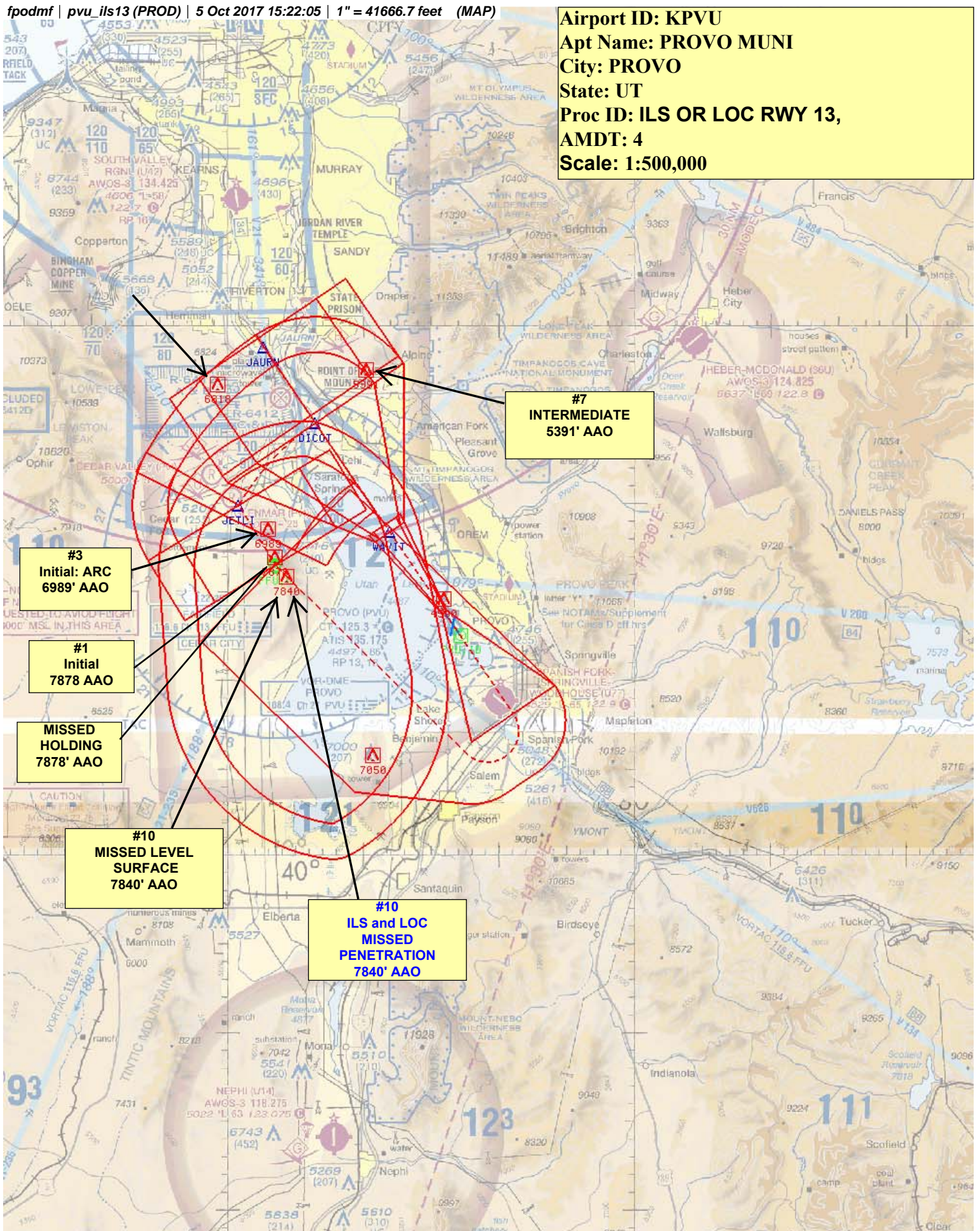
40°13'N-111°43'W

PROVO MUNI (PVU)
ILS or LOC RWY 13

NM 7 14 21 28 35 42 49
FT 42000 84000 126000 168000 210000 252000 294000

fpodmf | pvu_ils13 (PROD) | 5 Oct 2017 15:22:05 | 1" = 41666.7 feet (MAP)

Airport ID: KPVU
Apt Name: PROVO MUNI
City: PROVO
State: UT
Proc ID: ILS OR LOC RWY 13,
AMDT: 4
Scale: 1:500,000



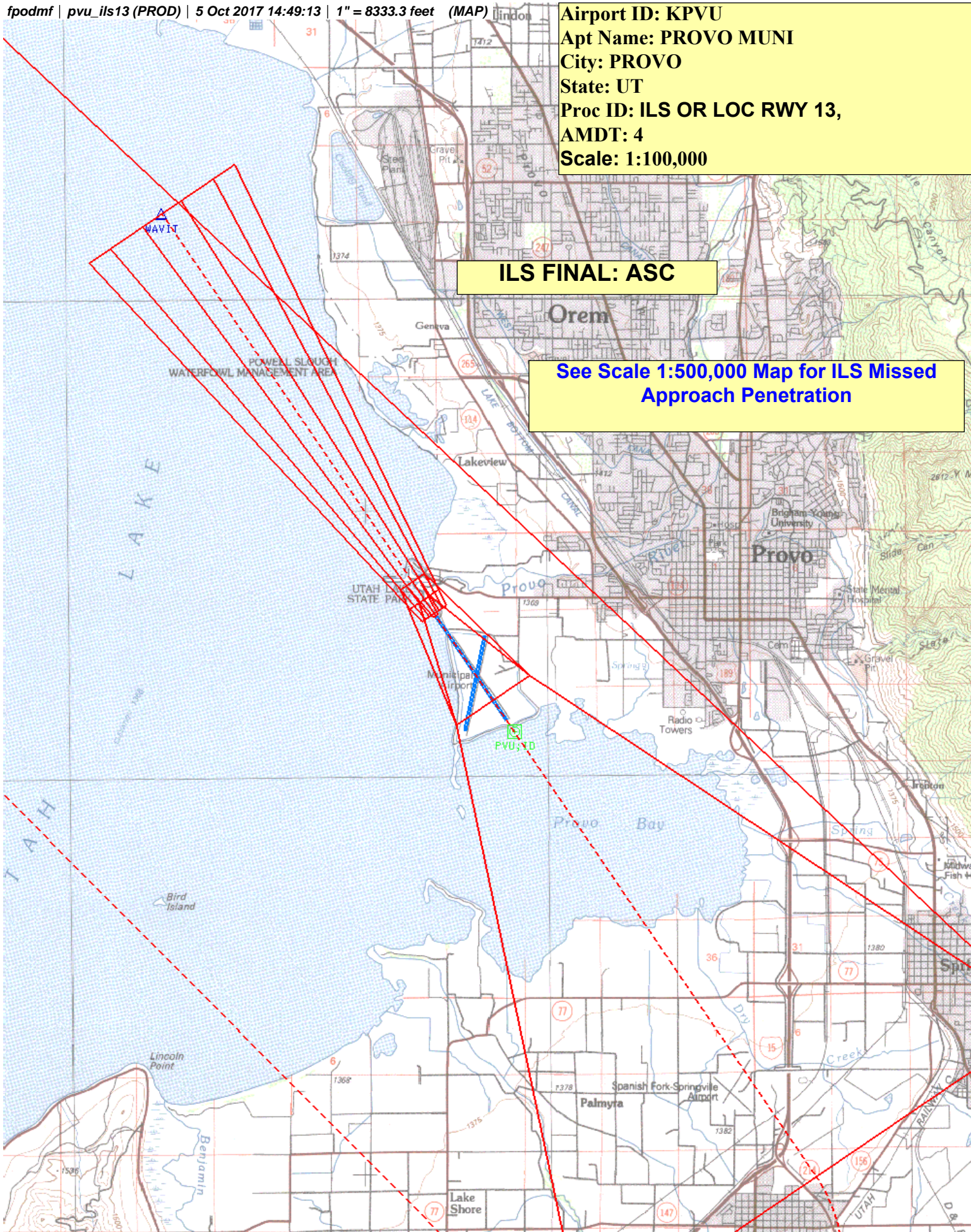
NM 1 2 3 4 5 6 7 8 9 10
FT 8000 16000 24000 32000 40000 48000 56000 64000

fpodmf | pvu_ils13 (PROD) | 5 Oct 2017 14:49:13 | 1" = 8333.3 feet (MAP)

Airport ID: KPVU
Apt Name: PROVO MUNI
City: PROVO
State: UT
Proc ID: ILS OR LOC RWY 13,
AMDT: 4
Scale: 1:100,000

ILS FINAL: ASC

See Scale 1:500,000 Map for ILS Missed Approach Penetration



NM 1 2 3 4 5 6 7 8 9 10
FT 8000 16000 24000 32000 40000 48000 56000 64000

fpodmf | pvu_ils13 (PROD) | 5 Oct 2017 14:46:35 | 1" = 8333.3 feet (MAP)

LOC FINAL

Airport ID: KPVU

Apt Name: PROVO MUNI

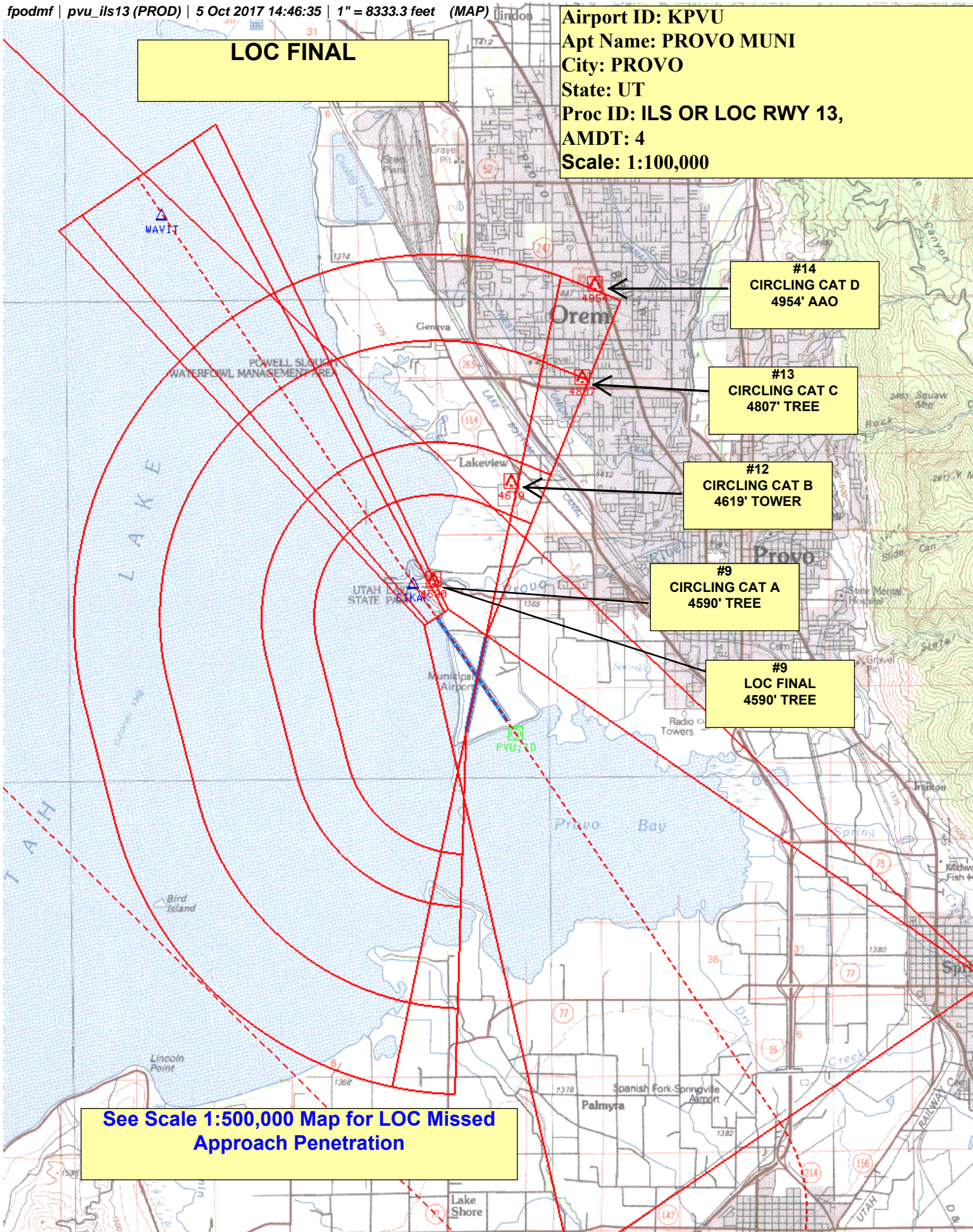
City: PROVO

State: UT

Proc ID: ILS OR LOC RWY 13,

AMDT: 4

Scale: 1:100,000



TERMINAL AIRSPACE DATA REQUIREMENTS

CITY: **PROVO**

Info only

STATE: **UT**

AIRPORT NAME: **PROVO MUNI**

ID: **KPVU**

PROCEDURE: **ILS OR LOC RWY 13**

AMDT: **3**

DOCKET#: **NOT REQUIRED**
(96-AXX-X/Required/Not Required)

ALL DIST TO 1/100 NM; ELEV TO NEAREST FT; COORD TO 1/100 SEC; DEG TO 1/100 DG.

- | | | | |
|---|---------------------------------|--------------------------------|---------------|
| 1. Distance from | <u>THLD</u> | to 1000' point | <u>2.99</u> |
| <small>(Enter THLD, FAF, ARP, FACILITY, as appropriate)</small> | | | |
| 2. Width of | <u>FINAL</u> | segment at 1000' point | <u>0.87</u> |
| <small>(Enter appropriate segment, final, intermediate, etc.)</small> | | | |
| 3. True Course of | <u>FINAL</u> | segment containing 1000' point | <u>145.79</u> |
| 4. High Terrain in | <u>FINAL</u> | segment containing 1000' point | <u>4495</u> |
| 5. Distance from | <u>THLD</u> | to 1500' point | <u>4.90</u> |
| <small>(If 1500' point in PT maneuvering area or holding pattern note in remarks)</small> | | | |
| 6. Width of | <u>FINAL</u> | segment at 1500' point | <u>1.28</u> |
| 7. True Course of | <u>FINAL</u> | segment containing 1500' point | <u>145.79</u> |
| 8. High Terrain in | <u>FINAL</u> | segment containing 1500' point | <u>4495</u> |
| 9. Threshold Coordinates (if straight-in) ... | <u>401348.76N / 1114356.79W</u> | | |
| 10. ARP Coordinates | <u>401309.10N / 1114324.10W</u> | | |
| 11. Runway Approach End and distance furthest from ARP | RWY | <u>13</u> | |
| | Distance | <u>0.78</u> | NM |
| 12. FAF Coordinates | <u>401821.91N / 1114759.41W</u> | | |

REMARKS: Approach/Drawing attached.