

<b>Flight Procedure Tracking Form</b>		<b>Action:</b> FLIGHT CHECK	<b>Task Type:</b> IAP	<b>Date Open:</b> 08/03/2017	<b>Task #:</b> 2017080328197201001	<b>Request #:</b> 20170803281972
<b>Procedure:</b> RNAV (GPS) RWY 5 AMDT 1			<b>Airport ID:</b> KDPL	<b>Airport:</b> DUPLIN CO		<b>Reimbursable #:</b> NO
<b>City:</b> KENANSVILLE	<b>ST:</b> NC	<b>GPS #:</b>	<b>Estimated Chart Date:</b> 11/08/2018		<b>FICO #:</b>	
<b>Fac ID:</b> N/A		<b>Fac. Type:</b>		<b>Specialist:</b> BARBARA GORMAN		
<b>Procedure Review</b>						
	<b>Rec'd</b>	<b>Rel'd</b>	<b>Full Name</b>	<b>Comments</b>		
<b>Lead:</b>	05/18/2018			QUALITY		
<b>QA:</b>				20 B. BICKETT 8/16/2018		
<b>Liaison:</b>				CHECKED		
<b>Procedure Comments:</b>			<b>ENROUTE-NON</b>			
PENDING DATA USED FOR KDPL AIRPORT AND RUNWAYS. CONTACT: LONNIE EVERHART 405.954.4576			<b>Remark Type:</b> INFORMATION			
09/04/18: THIS IS AN UPDATED COPY OF THE FORM DEVELOPED ON 06/20/2018. 1. ENTERED "11/08/2018" IN REQUIRED EFFECTIVE DATE BLOCK.						

RNP APCH.

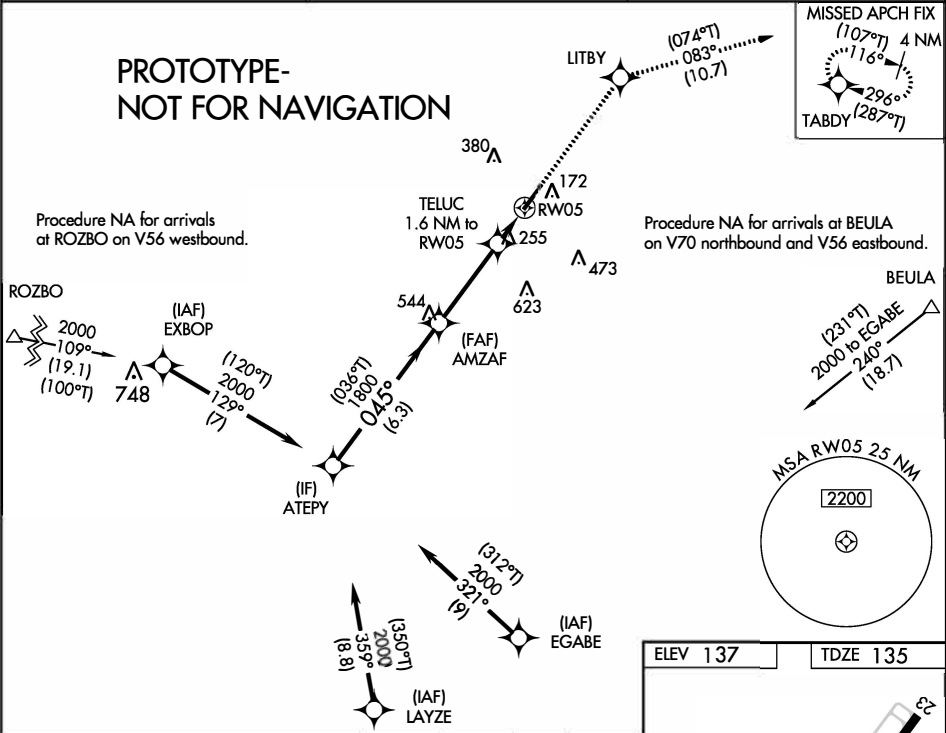
▼ For uncompensated Baro-VNAV systems, LNAV/VNAV NA below -15°C or above 54°C.

MISSED APPROACH: Climb to 2000 direct LITBY and on track 083° to TABDY and hold.

AWOS-3  
120.675

SEYMOUR JOHNSON APP CON ★  
119.7 273.6

UNICOM  
123.0 (CTAF) 0



VGSI and RNAV glidepath not coincident (VGSI Angle 3.00/TCH 26).

	ATEPY	AMZAF	LITBY	TABDY
	2000	1800	tr 083°	
	GP 3.00° TCH 40			* LNAV only
	6.3 NM	3.5 NM	1.6 NM	
CATEGORY	A	B	C	D
LPV DA		385-¾	250 (300-¾)	
LNAV/ VNAV DA		396-⅞	261 (300-⅞)	
LNAV MDA	520-1	385 (400-1)	520-1⅛	385 (400-1⅛)
	540-1	600-1	780-1¾	940-2½
	403 (500-1)	463 (500-1)	643 (700-1¾)	803 (900-2½)

CIRCLING

REIL Rwy 5 and 23 0  
MIRL Rwy 5-23 0

KENANSVILLE, NORTH CAROLINA

AL-6228 (FAA)

17117

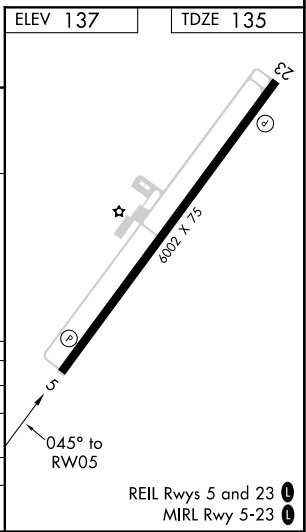
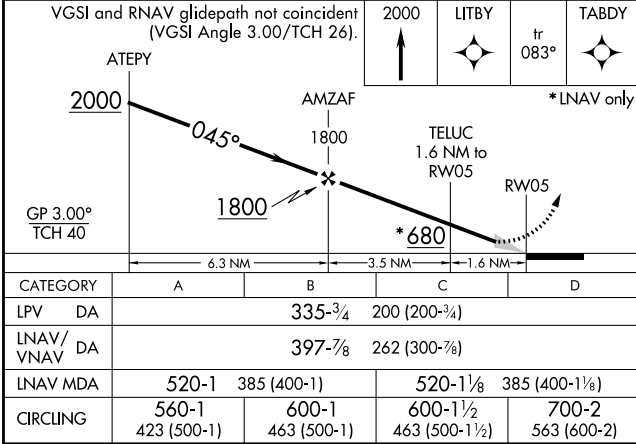
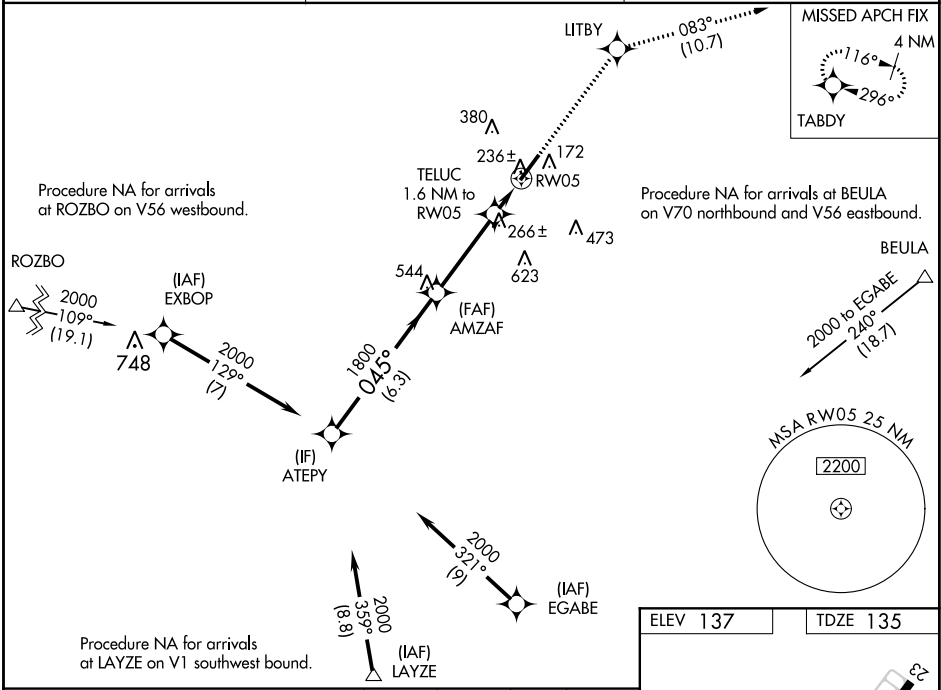
WAAS CH <b>63121</b> <b>W05A</b>	APP CRS <b>045°</b>	Rwy Idg TDZE <b>135</b> Apt Elev <b>137</b>	<b>6002</b>
----------------------------------------	------------------------	---------------------------------------------------	-------------

RNAV (GPS) RWY 5  
DUPLIN COUNTY (DPL)

**⚠** DME/DME RNP-0.3 NA. When local altimeter setting not received, use Clinton altimeter setting and increase all DA 45 feet and all MDA 60 feet; increase LNAV/VNAV all Cats visibility 1/8 mile and increase LNAV Cats C/D visibility 1/4 mile. For uncompensated Baro-VNAV systems, LNAV/VNAV NA below -15°C (5°F) or above 43°C (109°F). Baro-VNAV NA when using Clinton altimeter setting.

MISSED APPROACH: Climb to 2000 direct LITBY and on track 083° to TABDY and hold.

AWOS-3 <b>120.675</b>	SEYMOUR JOHNSON APP CON * <b>119.7 273.6</b>	UNICOM <b>123.0 (CTAF) 0</b>
--------------------------	-------------------------------------------------	---------------------------------



KENANSVILLE, NORTH CAROLINA

Orig-A 11DEC14

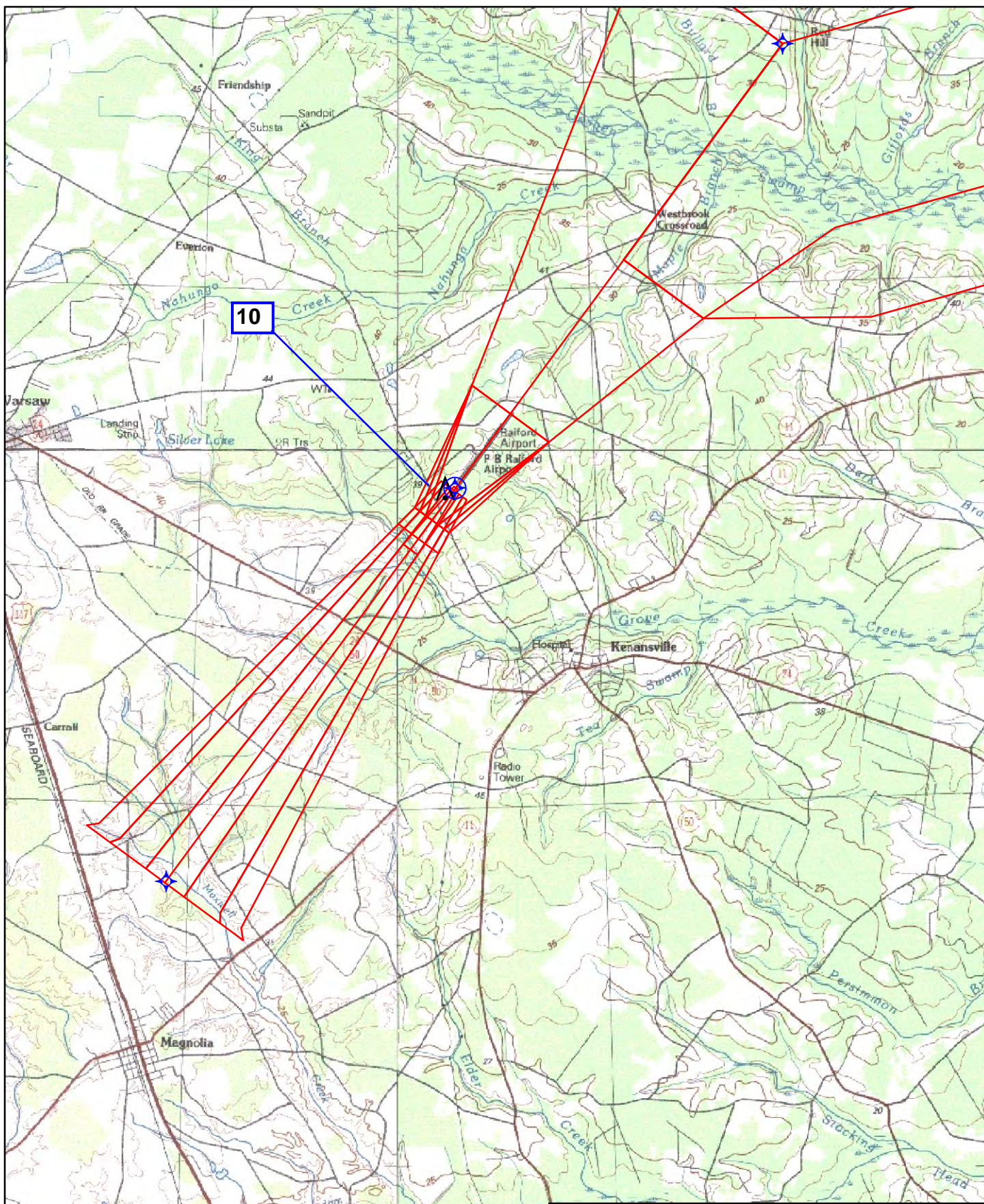
35°00'N-77°59'W

DUPLIN COUNTY (DPL)  
RNAV (GPS) RWY 5

SE-2, 24 MAY 2018 to 21 JUN 2018

SE-2, 24 MAY 2018 to 21 JUN 2018





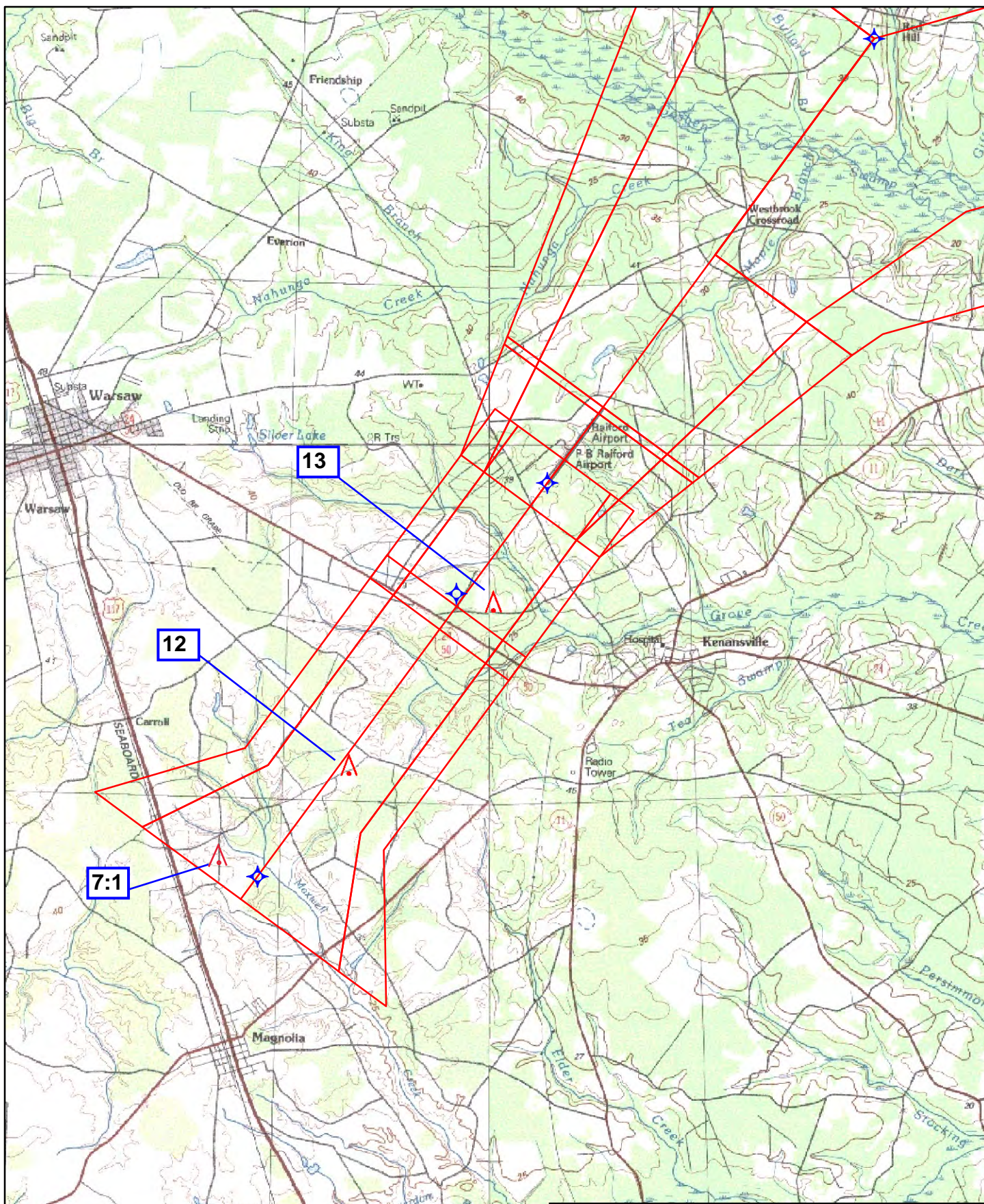
APT NAME/ID: DUPLIN CO (KDPL)  
CITY/STATE: KENANSVILLE, NC  
PROCEDURE: RNAV (GPS) RWY 5, AMDT 1  
1:100,000

10: LPV FINAL: 208 TREE (37-108847)





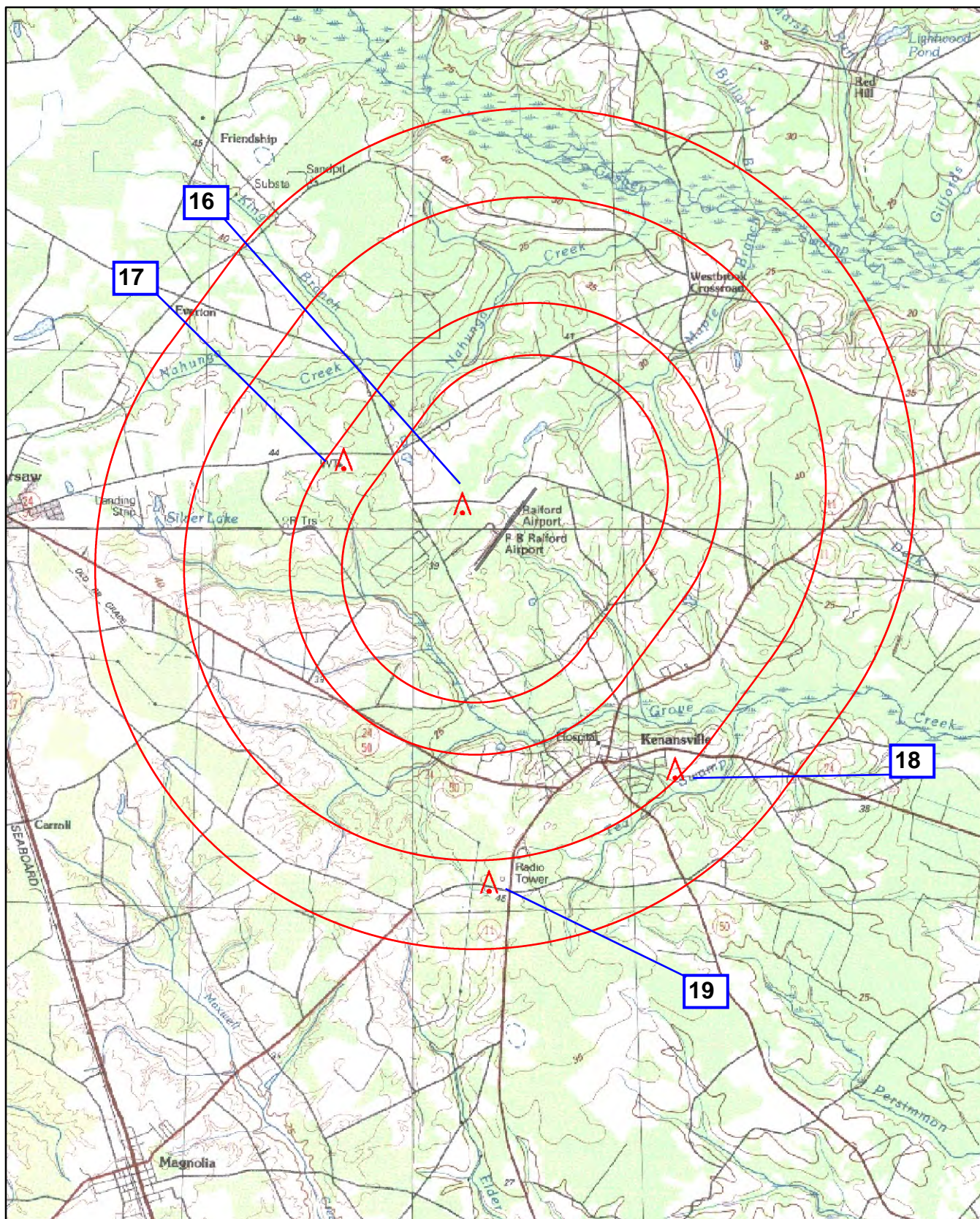




**APT NAME/ID:** DUPLIN CO (KDPL)  
**CITY/STATE:** KENANSVILLE, NC  
**PROCEDURE:** RNAV (GPS) RWY 5, AMDT 1  
**1:100,000**

**12: LNAV FINAL: 354 AAO**  
**13: LNAV STEPDOWN: 255 TANK (37-020890)**  
**7:1 OBS: 544 TOWER (37-001099)**

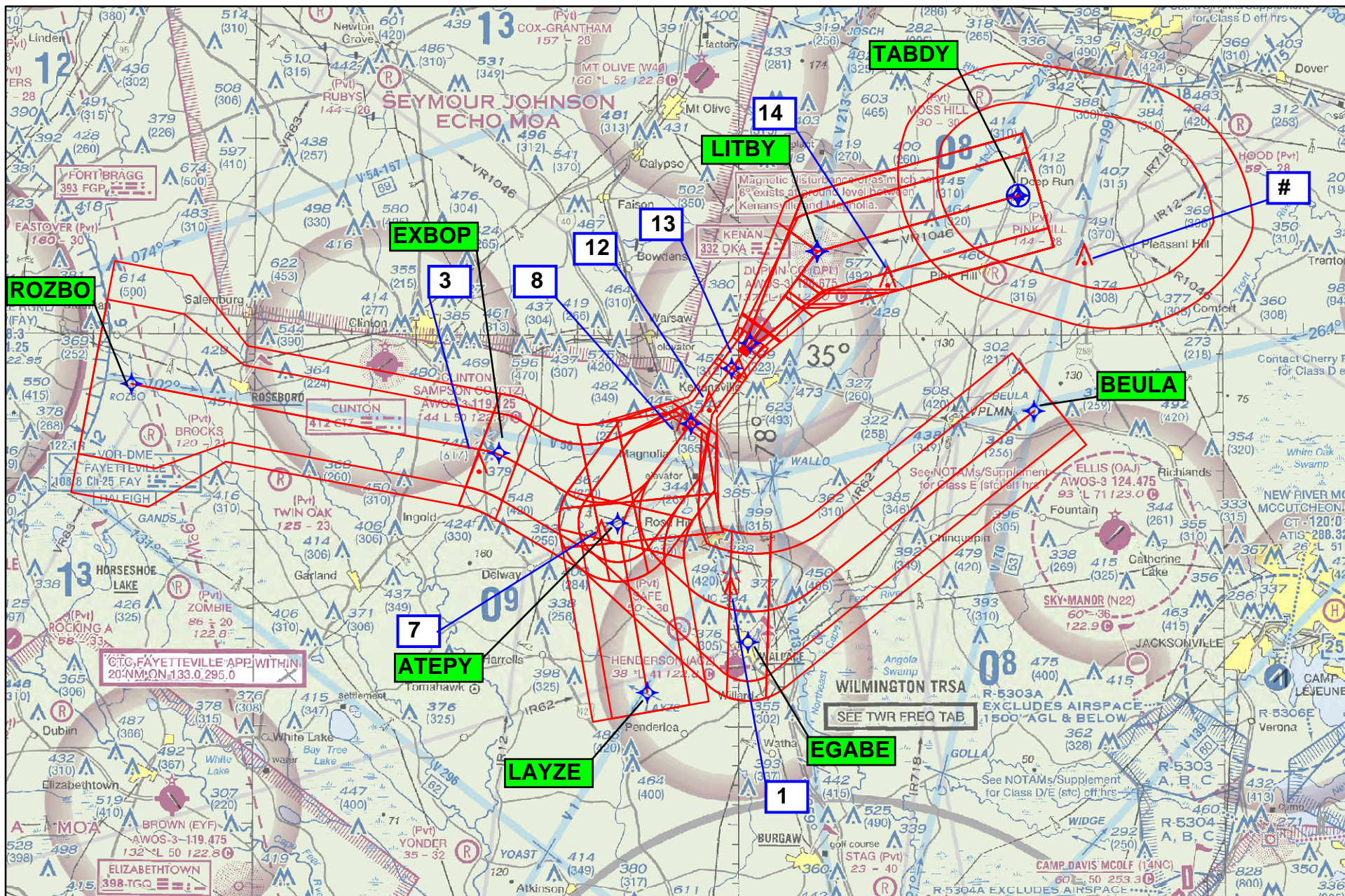




APT NAME/ID: DUPLIN CO (KDPL)  
 CITY/STATE: KENANSVILLE, NC  
 PROCEDURE: RNAV (GPS) RWY 5, AMDT 1  
 1:100,000

16: CIRC CAT A: 240 TREE (37-026636)  
 17: CIRC CAT B: 270 WATER TWR (37-109002)  
 18: CIRC CAT C: 472 TWR (37-002476)  
 19: CIRC CAT D: 623 TWR (37-003186)





APT NAME/ID: DUPLIN CO (KDPL)  
CITY/STATE: KENANSVILLE, NC  
PROCEDURE: RNAV (GPS) RWY 5, AMDT 1  
1:500,000

1: FEEDER: BEULA-EGABE: 494 TWR(37-001654)  
INITIAL: EGABE-ATEPY  
3: FEEDER: ROZBO-EXBOP: 748 TWR (37-003059)  
INITIAL: EXBOP-ATEPY  
7: INITIAL: LAYZE-ATEPY: 338 AAO

8: INT: 544 TWR(37-001099)  
12: LNAV FINAL: 354 AAO  
13: LNAV STEPDOWN: 255 TANK (37-020890)  
14: MA: 577 TWR (37-000598)  
#: MA HOLD: 491 TWR (37-002388)