

Flight Procedure Tracking Form		Action: FLIGHT CHECK	Task Type: IAP	Date Open: 08/04/2017	Task #: 201707273383870T001	Request #: 20170727338387
Procedure: ILS OR LOC RWY 32 AMDT 0A			Airport ID: KRTS	Airport: RENO/STEAD		Reimbursable #: NO
City: RENO	ST: NV	GPS #:	Estimated Chart Date: 02/01/2018		FICO #:	
Fac ID: RTS		Fac. Type: ILS			Specialist: JASON KRETSCHMER	
Procedure Review						
	Rec'd	Rel'd	Full Name		Comments	
Lead:	08/09/2017	09/18/2017	DION LANCIA			
QA:	09/18/2017		J ZEDER 10/16/2017			
Liaison:						
Procedure Comments:			ENROUTE-NON			
			Remark Type: INFORMATION			
<p>CONTACT DION LANCIA, AJV-5423, 405-954-1267.</p> <p>ACTIVE DATA (7-21-16) USED FOR KRTS AIRPORT AND RUNWAYS.</p> <p>ABBREVIATED AMENDMENT TO ADD PLANVIEW CHART NOTE.</p> <p>1. CHANGED PROCEDURE NAME FROM "ILS OR LOC/DME RWY 32" TO "ILS OR LOC RWY 32".</p> <p>2. ADDED CHART PLANVIEW NOTE "PROCEDURE NA FOR ARRIVAL ON SWR VOR/DME AIRWAY RADIALS 004 CW 062."</p> <p>3. ADDED CHART PLANVIEW NOTE "PROCEDURE NA FOR ARRIVAL ON HZN VORTAC AIRWAY RADIALS 227 CW 255."</p> <p>FLIGHT INSPECTION REVIEW NOT REQUIRED - PROCESSED IAW FLIGHT INSPECTION TEAM (AJW-333) MEMO, MAY 30, 2017.</p>						

INFORMATION ONLY

RENO, NEVADA

AL-524 (FAA)

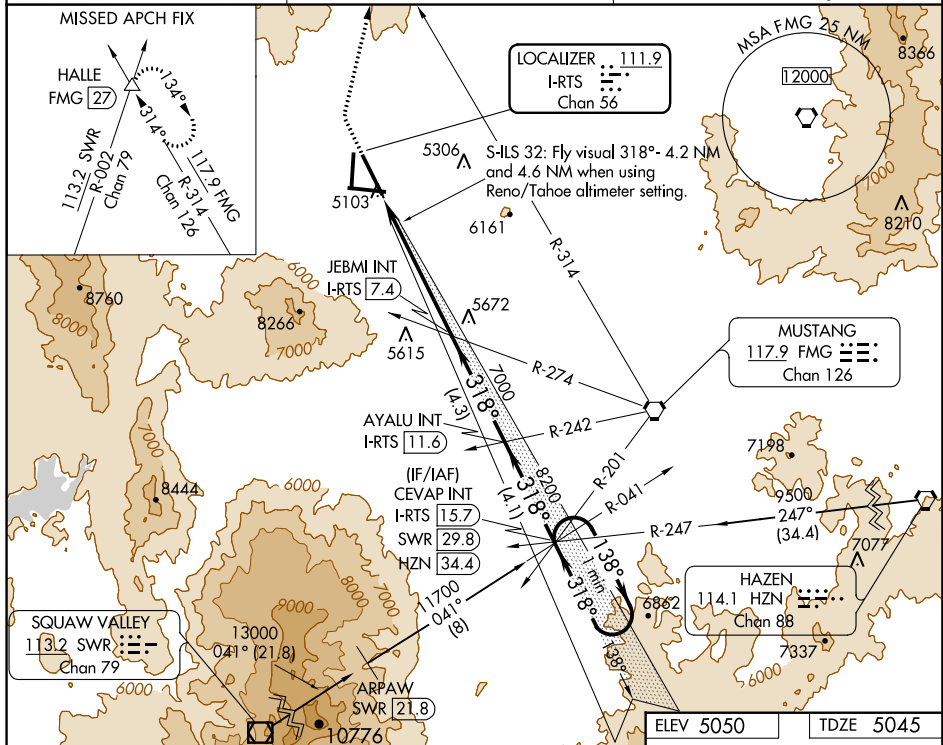
17229

LOC/DME I-RTS 111.9 Chan 56	APP CRS 318°	Rwy Idg TDZE Apl Elev 7800 5045 5050
---	------------------------	--

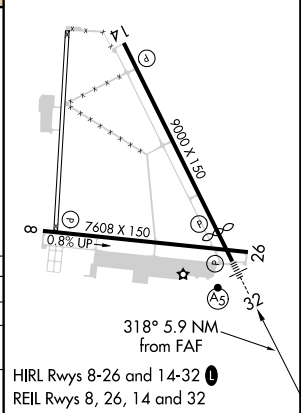
ILS or LOC/DME RWY 32 RENO/STEAD (RTS)

<p>NA Inoperative table does not apply. Procedure NA at night. When local altimeter setting not received, use Reno/Tahoe Intl altimeter setting and increase all DA/MDA 120 feet. VDP NA when using Reno/Tahoe Intl altimeter setting.</p>	<p>MALSR A5</p>	<p>MISSED APPROACH: Climb to 6740 then climbing right turn to 14000 via heading 356° and FMG VORTAC R-314 to HALLE INT/FMG 27 DME and hold, continue climb-in-hold to 14000.</p>
---	----------------------------	---

AWOS-3 135.175	NORCAL APP CON 126.3 353.9	UNICOM 122.7 (CTAF)
--------------------------	--------------------------------------	-------------------------------



6740 ↑	14000 hdg 356°	FMG R-314	HALLE △	Use I-RTS DME when on the localizer course.			
S-ILS 32: Fly visual 318°- 4.2 NM and 4.6 NM when using Reno/Tahoe altimeter setting.				JEBMI INT I-RTS 7.4 7000	AYALU INT I-RTS 11.6	CEVAP INT I-RTS 15.7	One Minute Holding Pattern
I-RTS 1.5				I-RTS 6.6	7000	318° → 9400 ← 318°	GS 3.00° TCH 40
5.1 NM				0.8	4.3 NM	4.1 NM	
CATEGORY	A		B		C		D
S-ILS 32			6425-3		1380 (1400-3)		
S-LOC 32	6720-1¼ 1675 (1700-1¼)		6720-1½ 1675 (1700-1½)		6720-3		1675 (1700-3)
CIRCLING	6720-1¼ 1670 (1700-1¼)		6720-1½ 1670 (1700-1½)		6720-3		1670 (1700-3)



RENO, NEVADA

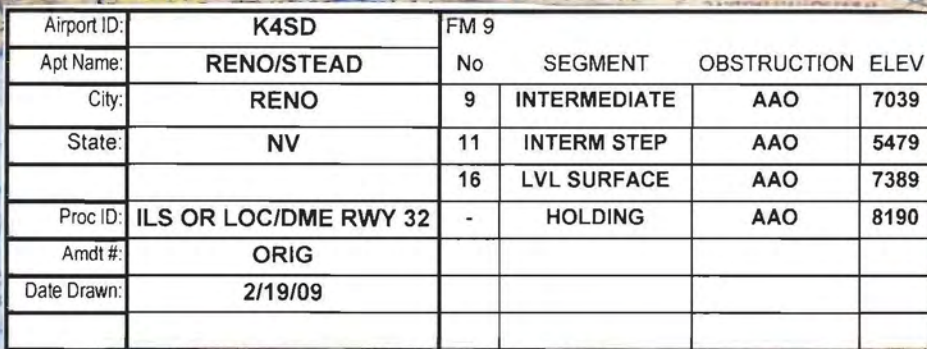
Orig 02JUL09

39°40'N-119°53'W

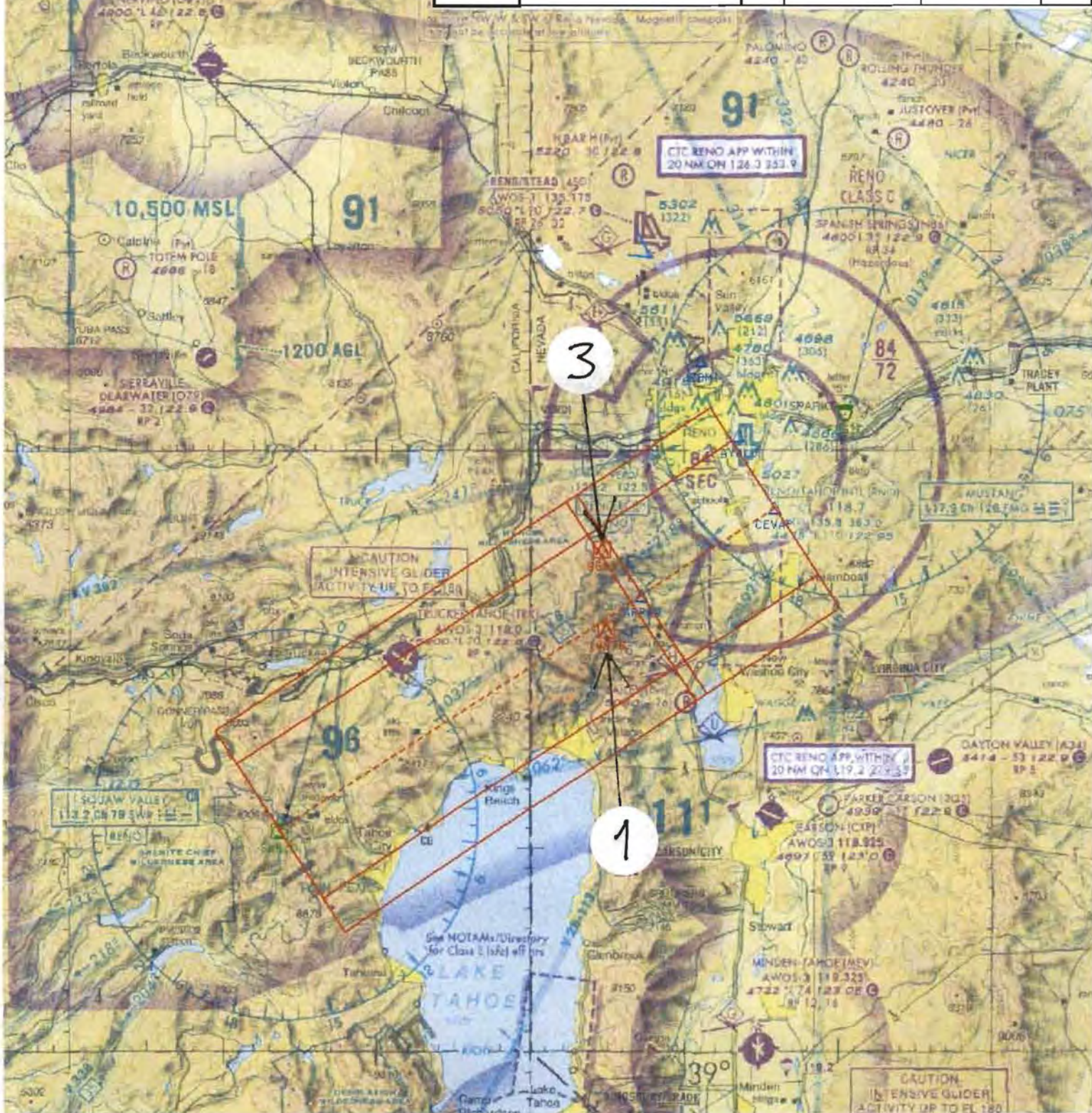
ILS or LOC/DME RWY 32 RENO/STEAD (RTS)

SW-4, 17 AUG 2017 to 14 SEP 2017

*f*podad | *k4sd*missed (PROD) | 19 Feb 2009 09:04:50 | 1" = 41666.7 feet (MAP)

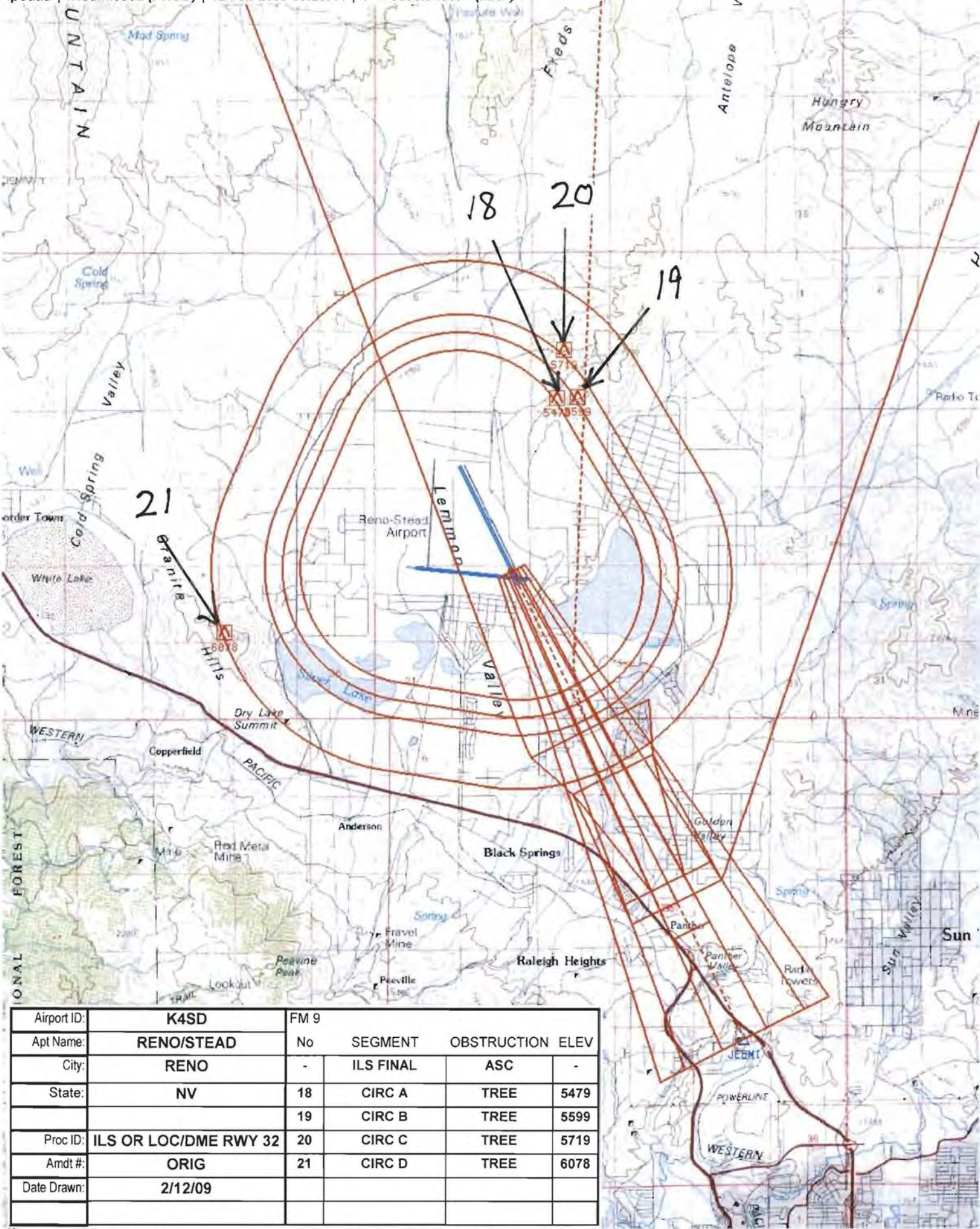


Airport ID:	K4SD	FM 9			
Apt Name:	RENO/STEAD	No	SEGMENT	OBSTRUCTION	ELEV
City:	RENO	1	FEEDER	AAO	10976
State:	NV	3	FEEDER STEP	AAO	9613
Proc ID:	ILS OR LOC/DME RWY 32				
Amdt #:					
Date Drawn:	5/6/2009				



NM 1 2 4 5 6 8 9 10
FT 8000 16000 24000 32000 40000 48000 56000 64000

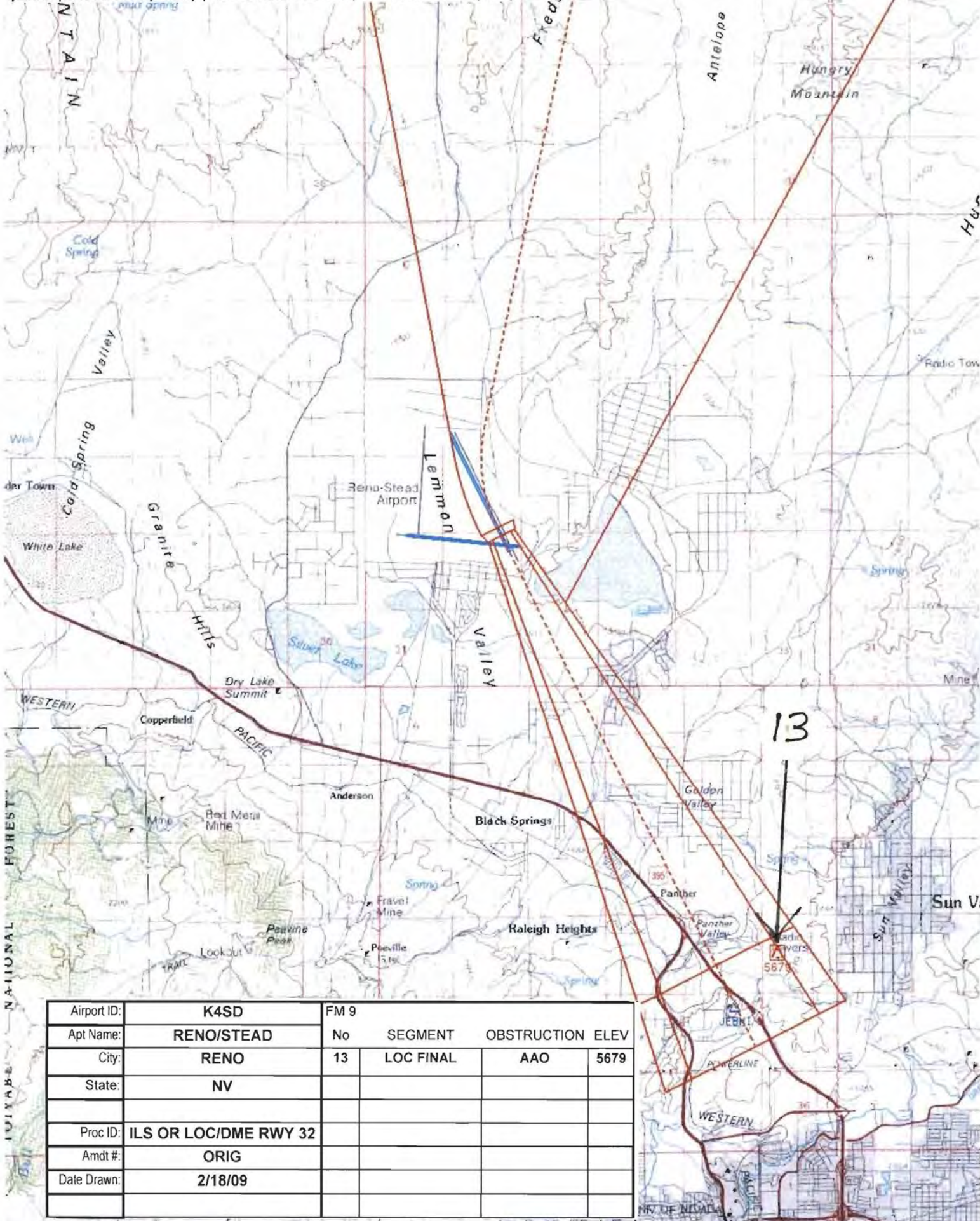
fpodad | k4sdmissd (PROD) | 12 Feb 2009 09:29:44 | 1" = 8333.3 feet (MAP)



Airport ID:	K4SD	FM 9			
Apt Name:	RENO/STEAD	No	SEGMENT	OBSTRUCTION	ELEV
City:	RENO	-	ILS FINAL	ASC	-
State:	NV	18	CIRC A	TREE	5479
		19	CIRC B	TREE	5599
Proc ID:	ILS OR LOC/DME RWY 32	20	CIRC C	TREE	5719
Amdt #:	ORIG	21	CIRC D	TREE	6078
Date Drawn:	2/12/09				

NM 1 2 4 5 6 8 9 10
 FT 8000 16000 24000 32000 40000 48000 56000 64000

fpodad | k4sdmissd (PROD) | 18 Feb 2009 14:01:16 | 1" = 8333.3 feet (MAP)



Airport ID:	K4SD	FM 9			
Apt Name:	RENO/STEAD	No	SEGMENT	OBSTRUCTION	ELEV
City:	RENO	13	LOC FINAL	AAO	5679
State:	NV				
Proc ID:	ILS OR LOC/DME RWY 32				
Amdt #:	ORIG				
Date Drawn:	2/18/09				

TERMINAL AIRSPACE DATA REQUIREMENTS

CITY: **RENO**

STATE: **NV**

AIRPORT NAME: **RENO/STEAD**

ID: **KRTS**

PROCEDURE: **ILS OR LOC/DME RWY 32**

AMDT: **ORIG**

DOCKET#: **NOT REQUIRED**

(96-AXX-X/Required/Not Required)

ALL DIST TO 1/100 NM; ELEV TO NEAREST FT; COORD TO 1/100 SEC; DEG TO 1/100 DG.

- | | | | |
|---|----------------------------------|--------------------------------|---------------|
| 1. Distance from | <u>THLD</u> | to 1000' point | <u>4.44</u> |
| <small>(Enter THLD, FAF, ARP, FACILITY, as appropriate)</small> | | | |
| 2. Width of | <u>FINAL</u> | segment at 1000' point | <u>1.18</u> |
| <small>(Enter appropriate segment, final, intermediate, etc.)</small> | | | |
| 3. True Course of | <u>FINAL</u> | segment containing 1000' point | <u>333.59</u> |
| 4. High Terrain in | <u>FINAL</u> | segment containing 1000' point | <u>5479</u> |
| 5. Distance from | <u>THLD</u> | to 1500' point | <u>10.22</u> |
| <small>(If 1500' point in PT maneuvering area or holding pattern note in remarks)</small> | | | |
| 6. Width of | <u>INTERMEDIATE</u> | segment at 1500' point | <u>2.43</u> |
| 7. True Course of | <u>INTERMEDIATE</u> | segment containing 1500' point | <u>333.59</u> |
| 8. High Terrain in | <u>INTERMEDIATE</u> | segment containing 1500' point | <u>6044</u> |
| 9. Threshold Coordinates (if straight-in) ... | <u>*393951.16N / 1195209.37W</u> | | |
| 10. ARP Coordinates | <u>394002.50N / 1195234.30W</u> | | |
| 11. Runway Approach End and distance furthest from ARP | RWY | <u>14</u> | |
| | Distance | <u>0.99</u> | NM |
| 12. FAF Coordinates | <u>393432.94N / 1194845.19W</u> | | |

REMARKS: Approach/Drawing attached. * DRWT