


<b>Flight Procedure Tracking Form</b>		<b>Action:</b> AMENDMENT	<b>Task Type:</b> IAP	<b>Date Open:</b> 10/11/2017	<b>Task #:</b> 2017071727944802001	<b>Request #:</b> 20170717279448
<b>Procedure:</b> RNAV (GPS) Y RWY 30 AMDT 1B			<b>Airport ID:</b> KGYG	<b>Airport:</b> GARY/CHICAGO INTL		<b>Reimbursable #:</b> NO
<b>City:</b> GARY	<b>ST:</b> IN	<b>GPS #:</b>	<b>Estimated Chart Date:</b> 02/01/2018		<b>FICO #:</b>	
<b>Fac ID:</b> N/A		<b>Fac. Type:</b>		<b>Specialist:</b> THOMAS KIRKPATRICK		
<b>Procedure Review</b>						
	<b>Rec'd</b>	<b>Rel'd</b>	<b>Full Name</b>	<b>Comments</b>		
<b>Lead:</b>	10/11/2017			QUALITY Digitally signed by		
<b>QA:</b>				32 PABLO ORTIZ-JR		
<b>Liaison:</b>				CHECKED Oct 11, 2017		
<b>Procedure Comments:</b>			<b>Remark Type:</b> INFORMATION			
<p>P-NOTAM: 1800 RVR NOTE PER AFS-400 AUTHORIZING 1800 RVR FOR LPV, GLS, AND ILS APPROACH PROCEDURES. ADD "NA WHEN USING CHICAGO MIDWAY INTL ALTIMETER SETTING."</p> <p>FLIGHT INSPECTION NOT REQUIRED MEMO DATED MAY 30, 2017.</p> <p>CONTACT VIC NASO: 405-954-5181</p>						

WAAS CH <b>78323</b> <b>W30A</b>	APP CRS <b>306°</b>	Rwy Idg <b>7959</b> TDZE <b>591</b> Apt Elev <b>597</b>
--	------------------------	---

RNAV (GPS) Y RWY 30  
GARY/CHICAGO INTL (GYY)

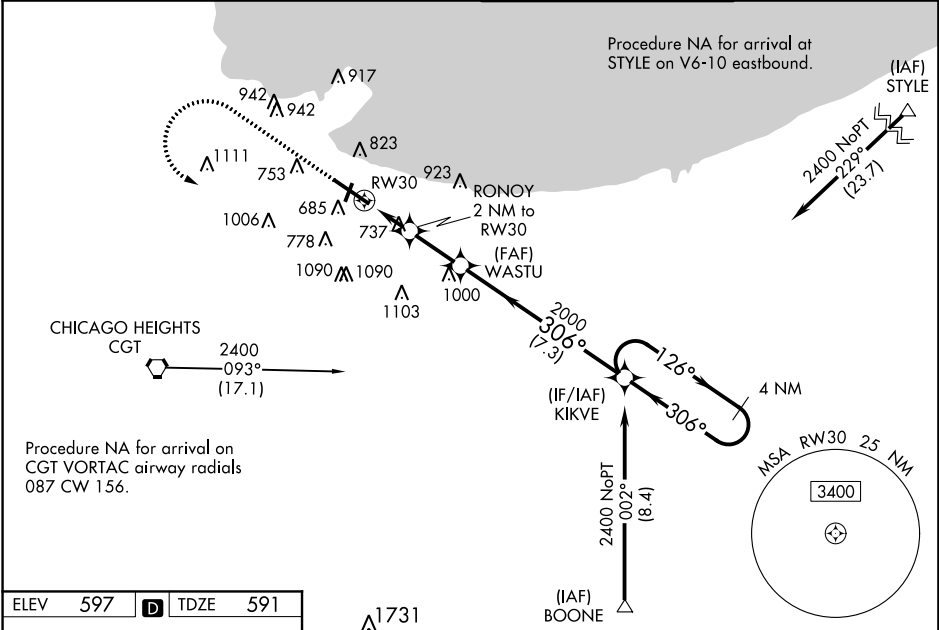
**⚠** For uncompensated Baro-VNAV systems, LNAV/VNAV NA below -16°C (4°F) or above 54°C (130°F). DME/DME RNP-0.3 NA. When local altimeter setting not received, use Chicago Midway Intl altimeter setting and increase all DA 47 feet and all MDA 60 feet, increase LNAV/VNAV visibility all Cats and LNAV Cats C/D visibility to RVR 5000, increase Circling Cat C/D visibility ¼ mile. Baro-VNAV and VDP NA with Chicago Midway Intl altimeter setting.  
\*\* RVR 1800 authorized with use of FD or AP or HUD to DA.

MALSR

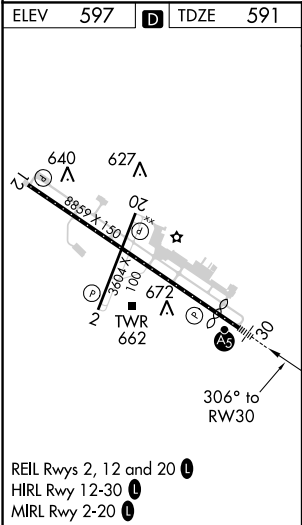


MISSED APPROACH:  
Climb to 1100 then  
climbing left turn to  
2400 direct KIKVE  
and hold

ATIS <b>134.575</b>	CHICAGO APP CON <b>133.1 285.6</b>	GARY TOWER ★ <b>125.6 (CTAF) 0</b>	GND CON <b>121.9</b>
------------------------	---------------------------------------	---------------------------------------	-------------------------



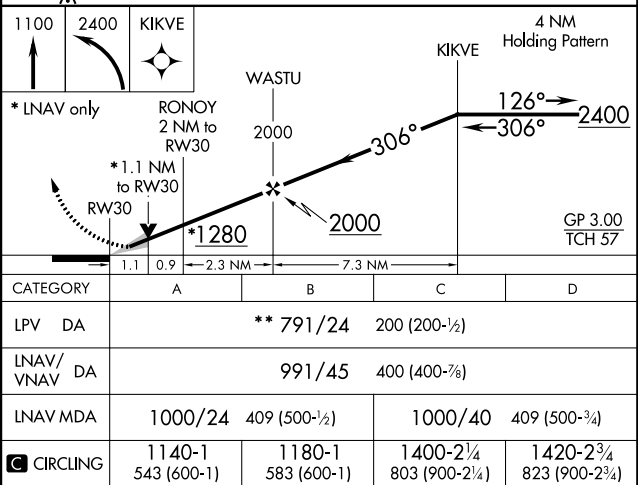
ELEV 597	<b>D</b>	TDZE 591
----------	----------	----------



REIL Rwy 2, 12 and 20 **0**  
HIRL Rwy 12-30 **0**  
MIRL Rwy 2-20 **0**

1100	2400	KIKVE
↑	↻	✦

\* LNAV only



1.1	0.9	2.3 NM	7.3 NM
-----	-----	--------	--------

CATEGORY	A	B	C	D
LPV DA	** 791/24 200 (200-½)			
LNAV/VNAV DA	991/45 400 (400-¾)			
LNAV MDA	1000/24 409 (500-½)	1000/40 409 (500-¾)		
<b>C</b> CIRCLING	1140-1 543 (600-1)	1180-1 583 (600-1)	1400-2¼ 803 (900-2¼)	1420-2¾ 823 (900-2¾)