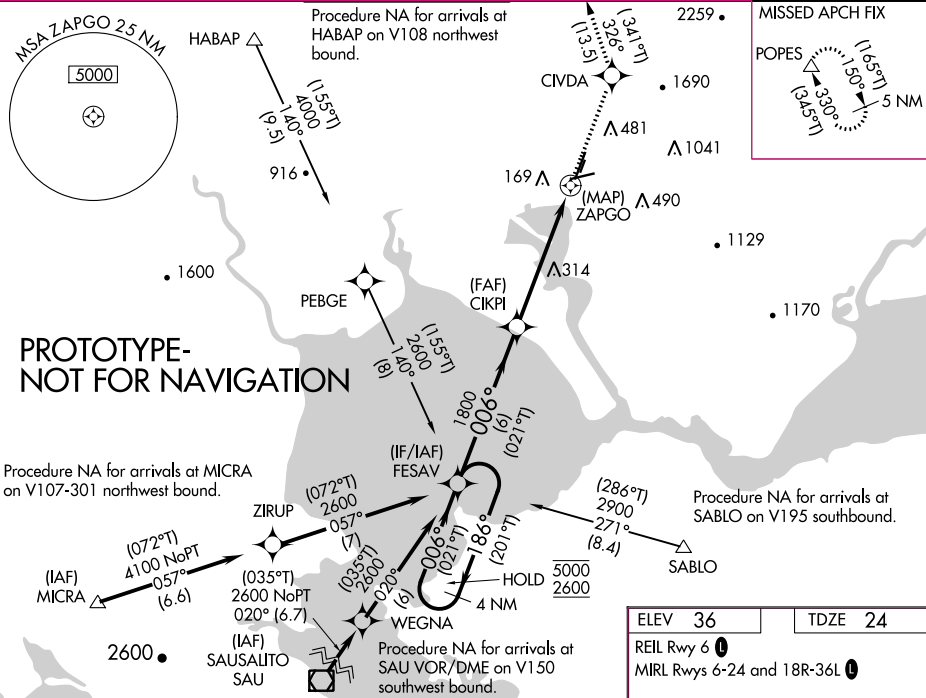


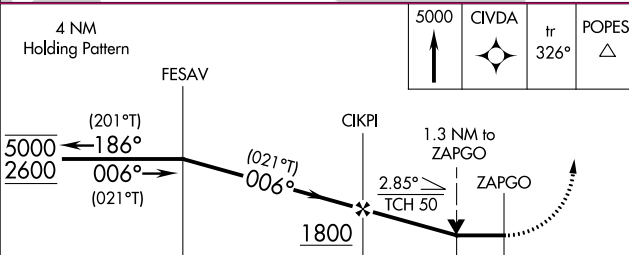
RNAV (GPS) X RWY 36L
NAPA COUNTY (APC)


MISSED APPROACH: Climb to 5000 direct CIVDA and on track 326° to POPES and hold, continue climb-in-hold to 5000.
****Missed approach requires minimum climb of 410 feet per NM to 2000.**

UNICOM
122.95

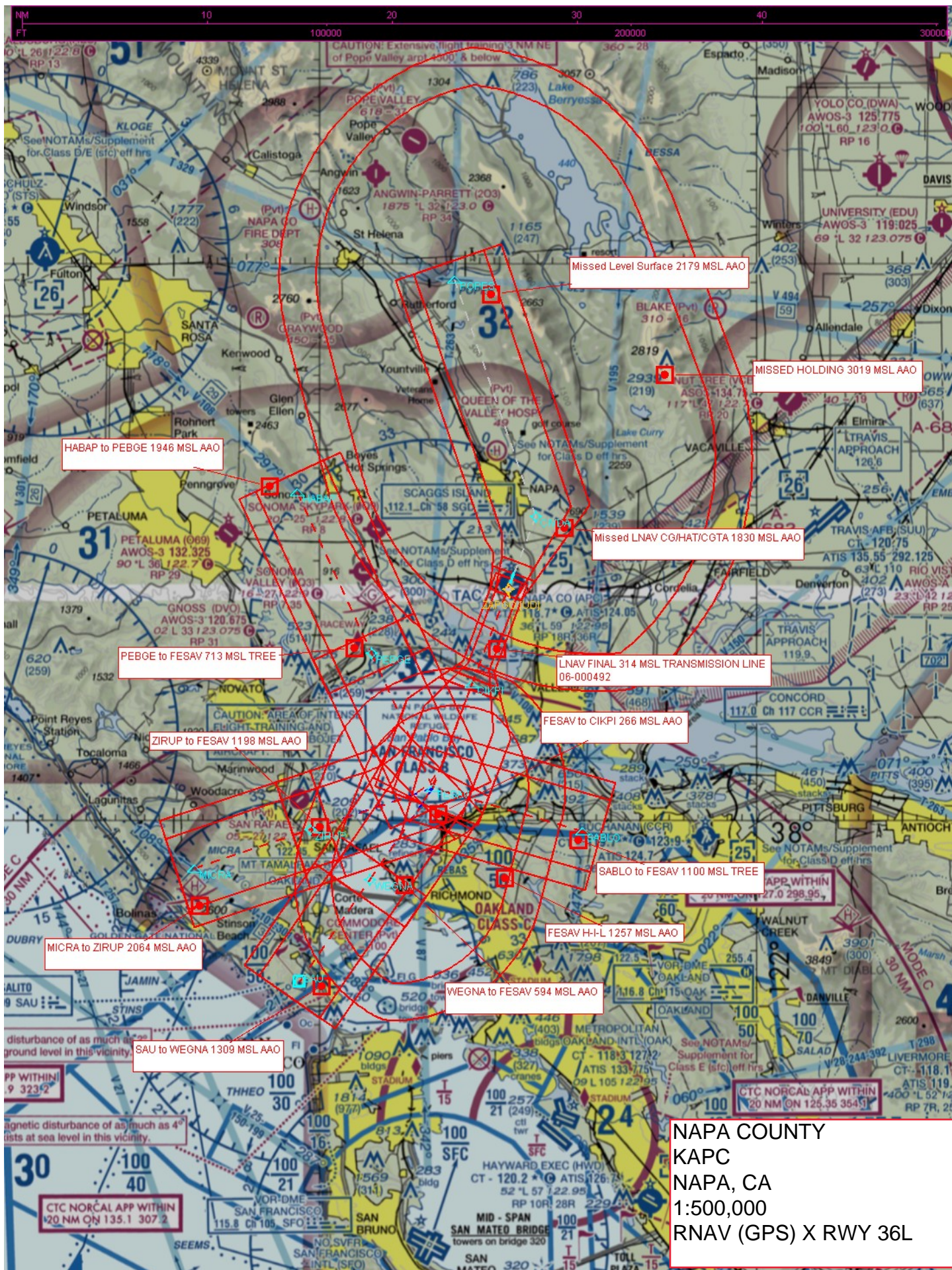
ELEV 36	TDZE 24
---------	---------

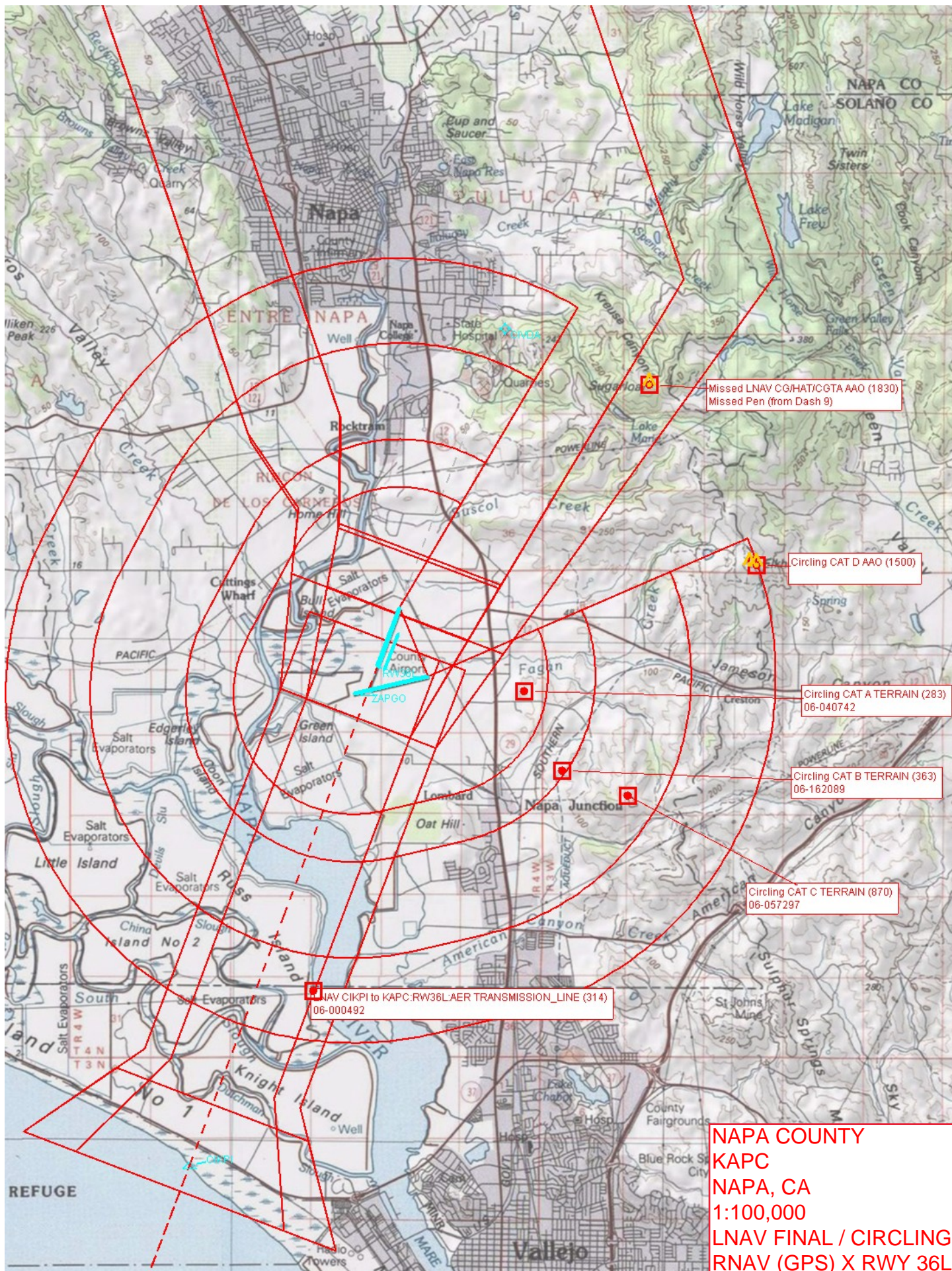
REIL Rwy 6 **L**
MIRL Rwy 6-24 and 18R-36L **L**



CATEGORY	A	B	C	D
LNAP MDA**	580-1	556 (600-1)	580-1 $\frac{5}{8}$	556 (600-1 $\frac{1}{8}$)
LNAP MDA	1280-1 $\frac{1}{4}$ 1256 (1300-1 $\frac{1}{4}$)	1280-1 $\frac{1}{2}$ 1256 (1300-1 $\frac{1}{2}$)	1280-3	1256 (1300-3)
 CIRCLING	1280-1 $\frac{1}{4}$ 1244 (1300-1 $\frac{1}{4}$)	1280-1 $\frac{1}{2}$ 1244 (1300-1 $\frac{1}{2}$)	1280-3 1244 (1300-3)	1800-3 1764 (1800-3)

NAPA COUNTY (APC)
RNAV (GPS) X RWY 36L





NAPA COUNTY
KAPC
NAPA, CA
1:100,000
LNAV FINAL / CIRCLING
RNAV (GPS) X RWY 36L