

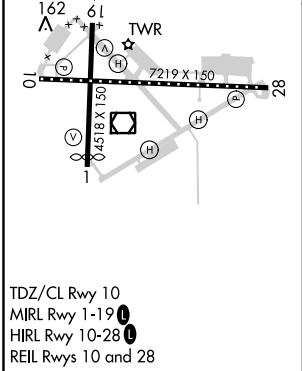
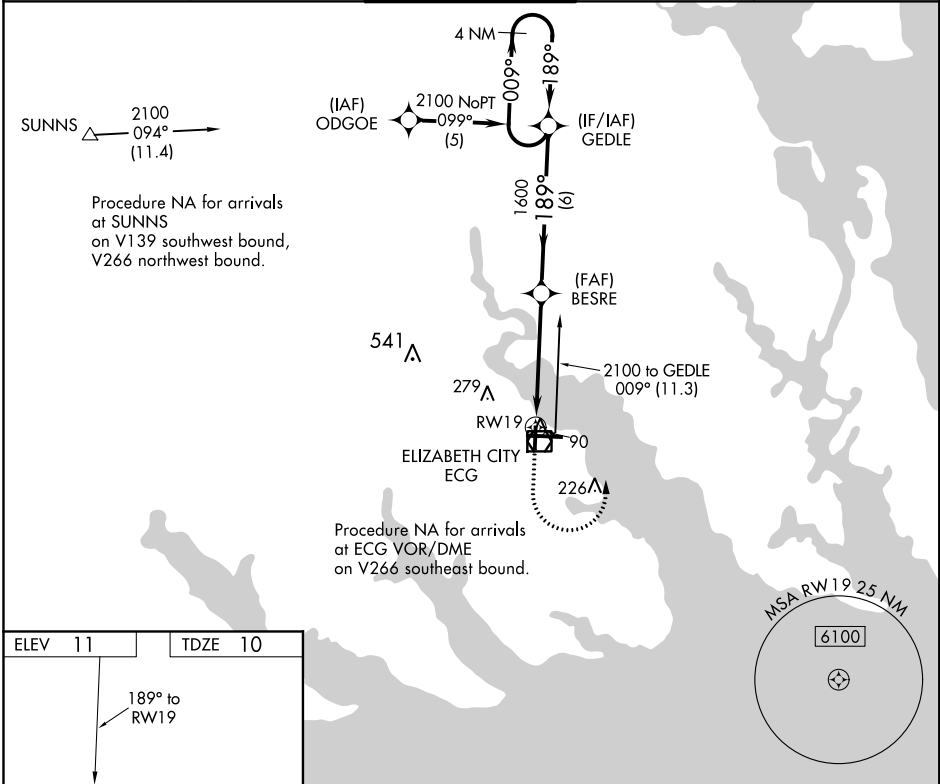
<b>Flight Procedure Tracking Form</b>		<b>Action:</b> AMENDMENT	<b>Task Type:</b> IAP	<b>Date Open:</b> 07/11/2017	<b>Task #:</b> 2017071130212601003	<b>Request #:</b> 20170711302126
<b>Procedure:</b> RNAV (GPS) RWY 19 AMDT 0C			<b>Airport ID:</b> KECG	<b>Airport:</b> ELIZABETH CITY CG AIR STATION/RGNL		<b>Reimbursable #:</b> NO
<b>City:</b> ELIZABETH CITY	<b>ST:</b> NC	<b>GPS #:</b>	<b>Estimated Chart Date:</b> 05/24/2018		<b>FICO #:</b>	
<b>Fac ID:</b> N/A		<b>Fac. Type:</b>			<b>Specialist:</b> JAMES LAFFERTY	
<b>Procedure Review</b>						
	<b>Rec'd</b>	<b>Rel'd</b>	<b>Full Name</b>	<b>Comments</b>		
<b>Lead:</b>	11/02/2017	01/02/2018	DAVID TEFFETELLER			
<b>QA:</b>	01/02/2018					
<b>Liaison:</b>						
<b>Procedure Comments:</b>			ENROUTE	<b>Remark Type:</b> INFORMATION		
MAG VAR CHANGED FROM 7W TO 11W. PENDING DATA USED FOR KECG CONTACT DAVE TEFFETELLER AT 301-427-4767 OR PATRICK MULQUEEN AT 405-954-4073 PROCESSED IAW FLIGHT INSPECTION TEAM (AJW-333) MEMO, MAY 30, 2017, SUBJECT: FLIGHT INSPECTION REVIEW NOT REQUIRED						

APP CRS	Rwy Idg	4518
189°	TDZE	10
	Apt Elev	11

RNAV (GPS) RWY 19  
ELIZABETH CITY COAST GUARD AIR STATION/RGNL (ECG)

<p>⚠</p> <p>DME/DME RNP-0.3 NA. Procedure not authorized when tethered balloon located approximately 2 miles southeast of airport is flying. When local altimeter setting not received, use Currituck altimeter setting and increase all MDA 40 feet and increase LNAV Cat C visibility ¼ mile.</p>	<p>MISSED APPROACH: Climb to 900 then climbing left turn to 2100 direct GEDLE WP and hold.</p>
---	--

ASOS 124.375	NORFOLK APP CON 119.55 269.42	ELIZABETH CITY TOWER★ 120.5(CTAF) 355.6	GND CON 121.9	UNICOM 122.95
-----------------	----------------------------------	--	------------------	------------------



<div><div><div>900</div><div>2100</div><div>GEDLE</div></div><div><div>VGSI and descent angles not coincident (VGSI Angle 2.75/TCH 30).</div><div>4 NM Holding Pattern</div></div></div>		<div><div><div>BESRE</div><div>GEDLE</div></div><div><div>009°</div><div>189°</div><div>2100</div></div></div>			
<div><div><div>RW19</div><div>1.5 NM to RW19</div><div>3.04° TCH 45</div></div><div><div>1.5</div><div>3.3 NM</div><div>6 NM</div></div></div>					
CATEGORY	A		B	C	D
LNAV MDA	480-1		470 (500-1)	480-1¼ 470 (500-1¼)	480-1½ 470 (500-1½)
CIRCLING	480-1		469 (500-1)	480-1½ 469 (500-1½)	640-2 629 (700-2)