



Flight Procedure Tracking Form		Action: FLIGHT CHECK	Task Type: IAP	Date Open: 06/22/2017	Task #: 2017062233086501001	Request #: 20170622330865
Procedure: ILS OR LOC RWY 15 AMDT 7			Airport ID: KGRK	Airport: ROBERT GRAY AAF		Reimbursable #: NO
City: FORT HOOD/KILLEEN	ST: TX	GPS #:	Estimated Chart Date: 03/29/2018		FICO #:	
Fac ID: GRK		Fac. Type: ILS			Specialist: PETER GUIMOND	
Procedure Review						
	Rec'd	Rel'd	Full Name	Comments		
Lead:	07/20/2017			QUALITY		
QA:				20 B. Bickett 11/20/2017		
Liaison:				CHECKED		
Procedure Comments: <div style="display: inline-block; background-color: yellow; padding: 2px;">ENROUTE</div> Remark Type: INFORMATION						
PENDING DATA USED. ASSIGNED MAGVAR: KGRK: OLD 7E - NEW 4E. I-GRK: OLD 7E - NEW 4E. STARN LOM DASH 2 CANCELLATION WILL REQUIRE IT TO BE REMOVED FROM THE ENROUTE LOW CHART. CONTACT: ROBERT HAMILTON, AJV-5422 LEAD, 405.954.4608						

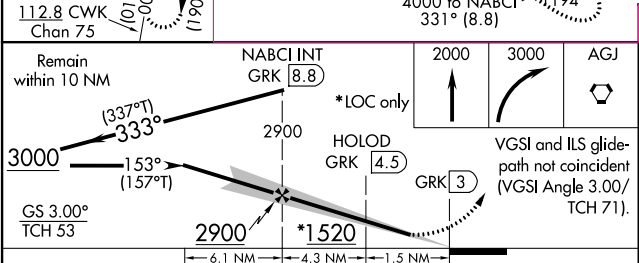
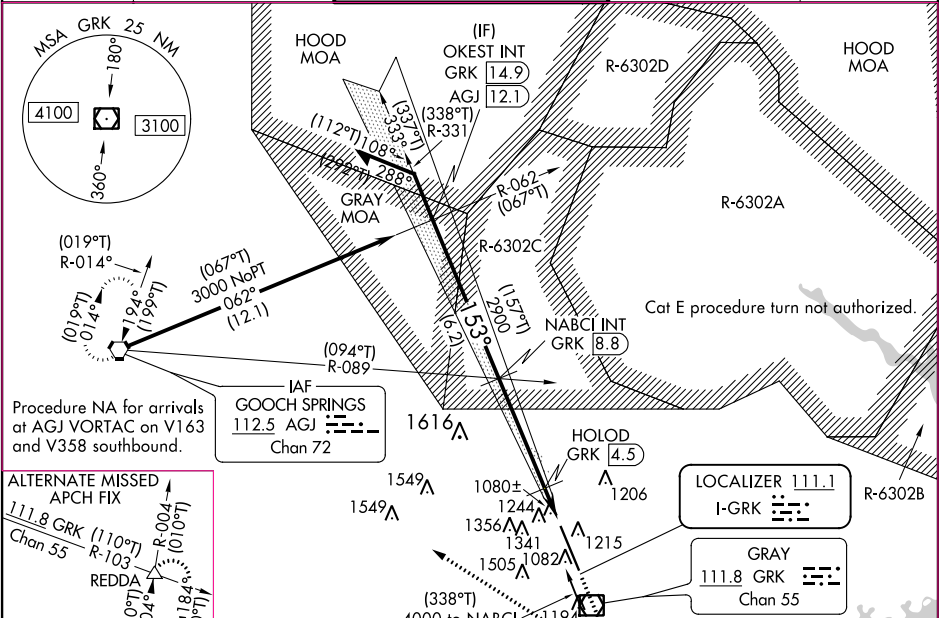
LOC I-GRK	APP CRS	Rwy Idg	10000
111.1	153°	TDZE	1015
		Apt Elev	1015



NEW

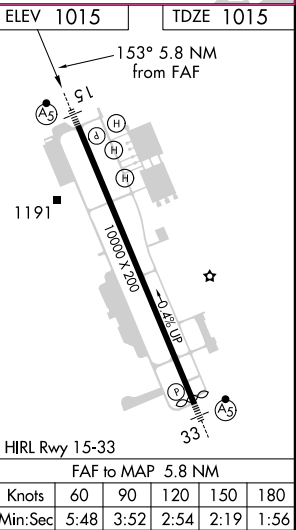
ILS or LOC RWY 15
ROBERT GRAY AAF (GRK)

 #RVR 1800 authorized with use of FD or AP or HUD to DA. Circling NA W of Rwy 15-33. For inop ALS, increase S-ILS 15 Cat E visibility to RVR 4000, S-LOC 15 Cats C/D/E visibility to 1 3/4 SM, and HOLOD fix minimums S-LOC 15 Cats C/D/E visibility to RVR 5500. DME from GRK VOR/DME. Simultaneous reception of I-GRK and GRK VOR/DME required.	 MISSED APPROACH: Climb to 2000 then climbing right turn to 3000 direct AGJ VORTAC and hold.
--	---

ATIS	GRAY APP CON	GRAY TOWER	GND CON	CLNC DEL
124.9	120.075 323.15	120.75 285.5	126.2 279.5	121.8 251.1



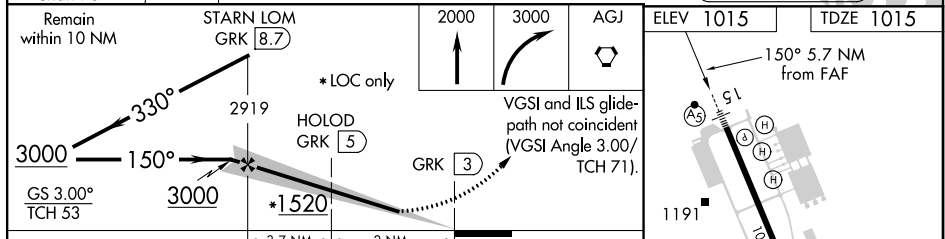
CATEGORY	A	B	C	D	E
#S-ILS 15	1215/24		200 (300-1/2)		
S-LOC 15	1520/24	505 (600-1/2)	1520/55	505 (600-1/4)	
 CIRCLING	1540-1	525 (600-1)	1560-1 1/2 545 (600-1 1/2)	1620-2 605 (700-2)	1740-2 1/2 725 (800-2 1/2)
HOLOD FIX MINIMUMS (DME REQUIRED)					
S-LOC 15	1380/24	365 (400-1/2)	1380/35	365 (400-3/4)	
 CIRCLING	1540-1	525 (600-1)	1560-1 1/2 545 (600-1 1/2)	1620-2 605 (700-2)	1740-2 1/2 725 (800-2 1/2)




ILS or LOC RWY 15
 1.5 Miles (2.4 Kilometers) (CDR)

FORT HOOD/KILLEEN/ ROBERT GRAY AAF (GRK)

ATIS 124.9	GRAY APP CON 120.075 323.15	GRAY TOWER 120.75 285.5	GND CON 126.2 279.5	CLNC DEL 121.8 251.1
---------------	--------------------------------	----------------------------	------------------------	-------------------------



CATEGORY	A	B	C	D	E
S-ILS 15	1217/24 202 (300-½)				
S-LOC 15	1520/24	505 (600-½)	1520/50	505 (600-1)	1520/60 505 (600-1¼)
CIRCLING	1540-1	525 (600-1)	1560-1½ 545 (600-1½)	1580-2 565 (600-2)	1740-2½ 725 (800-2½)
HOLOD FIX MINIMUMS					
S-LOC 15	1480/24	465 (500-½)	1480/40 465 (500-¾)	1480/50 465 (500-1)	1480/60 465 (500-1¼)
CIRCLING	1540-1	525 (600-1)	1560-1½ 545 (600-1½)	1580-2 565 (600-2)	1740-2½ 725 (800-2½)

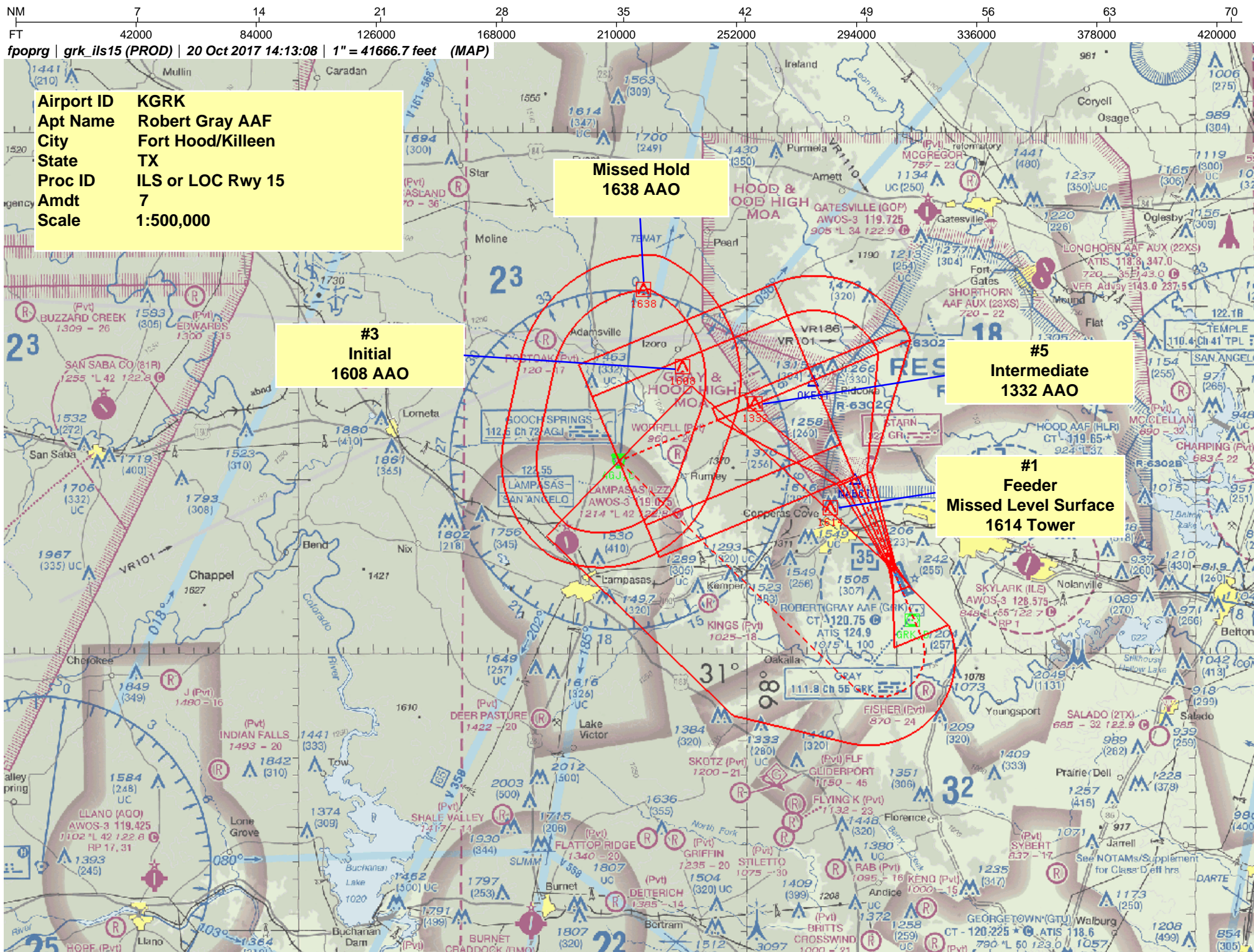


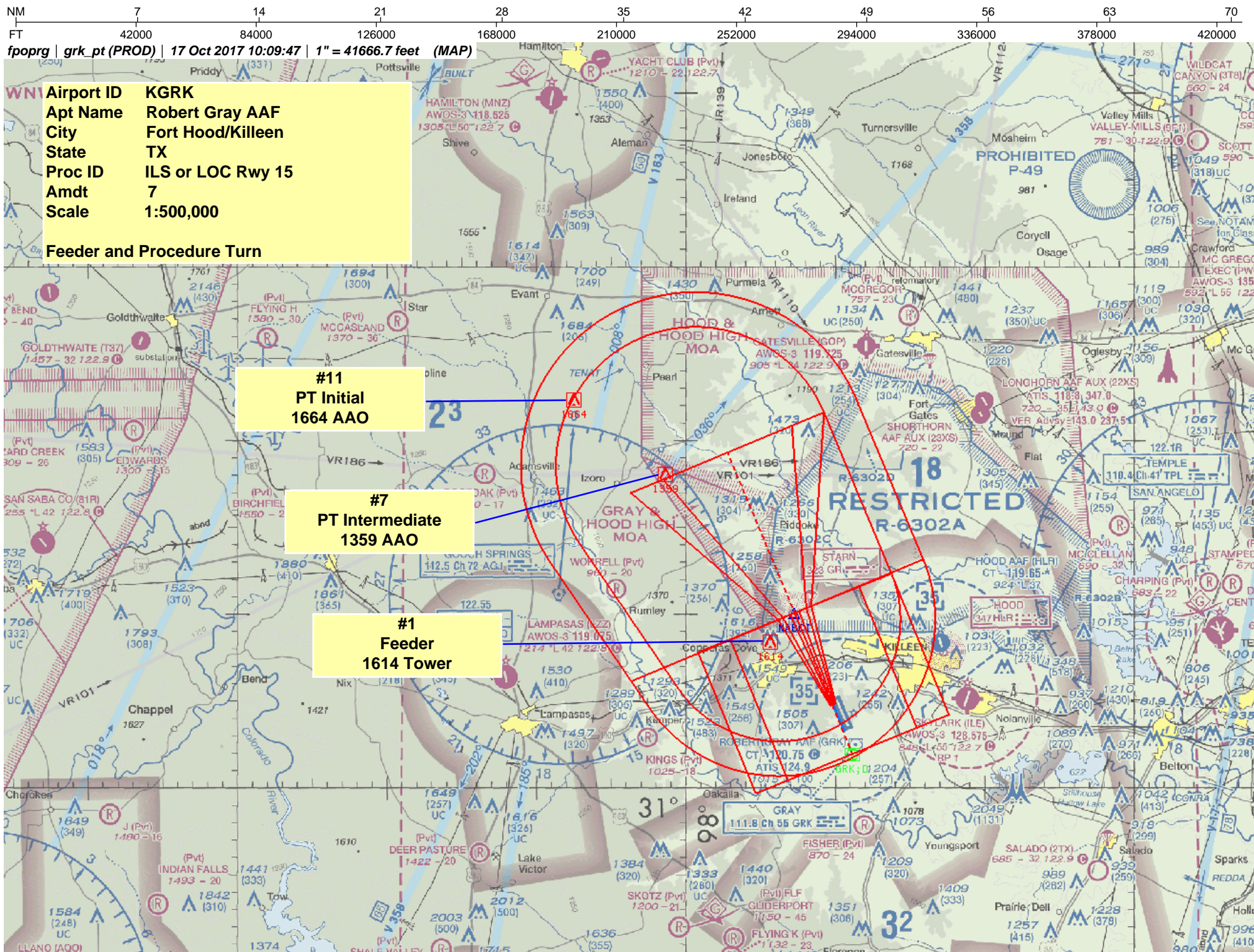
HIRL Rwy 15-33

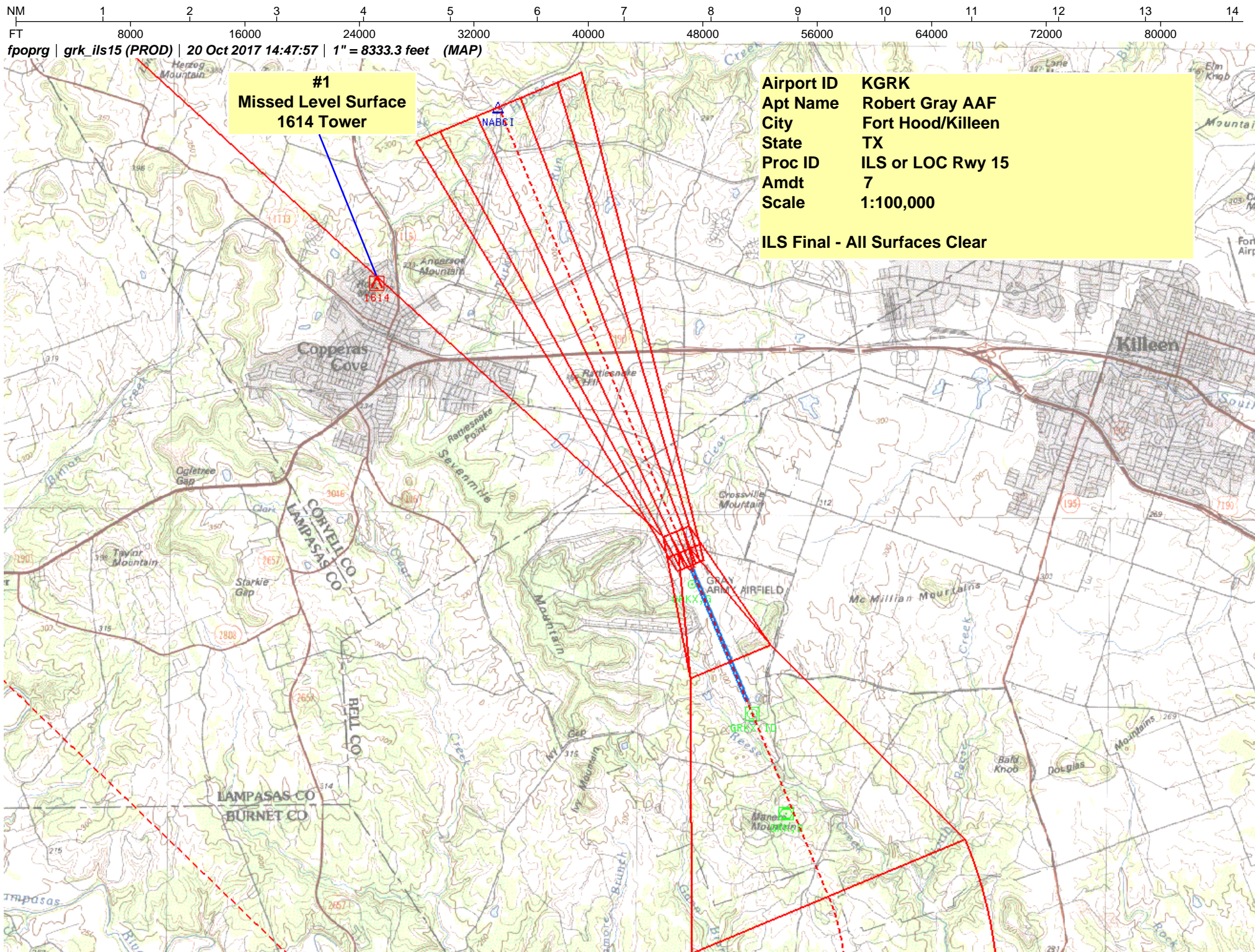
FAF to MAP 5.7 NM					
Knots	60	90	120	150	180
Min:Sec	5:42	3:48	2:51	2:17	1:54

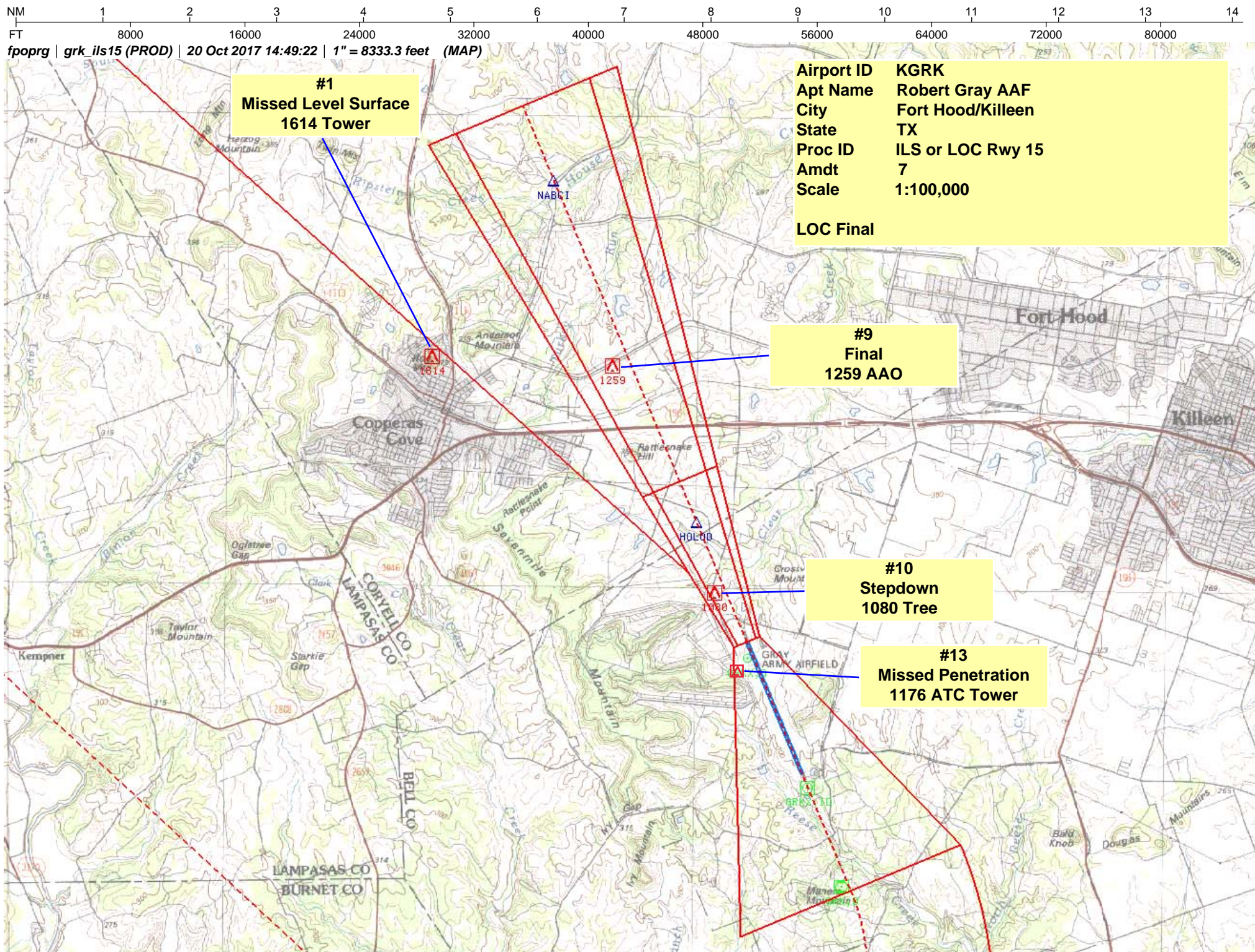
ILS or LOC RWY 15

SC-3, 12 OCT 2017 to 09 NOV 2017



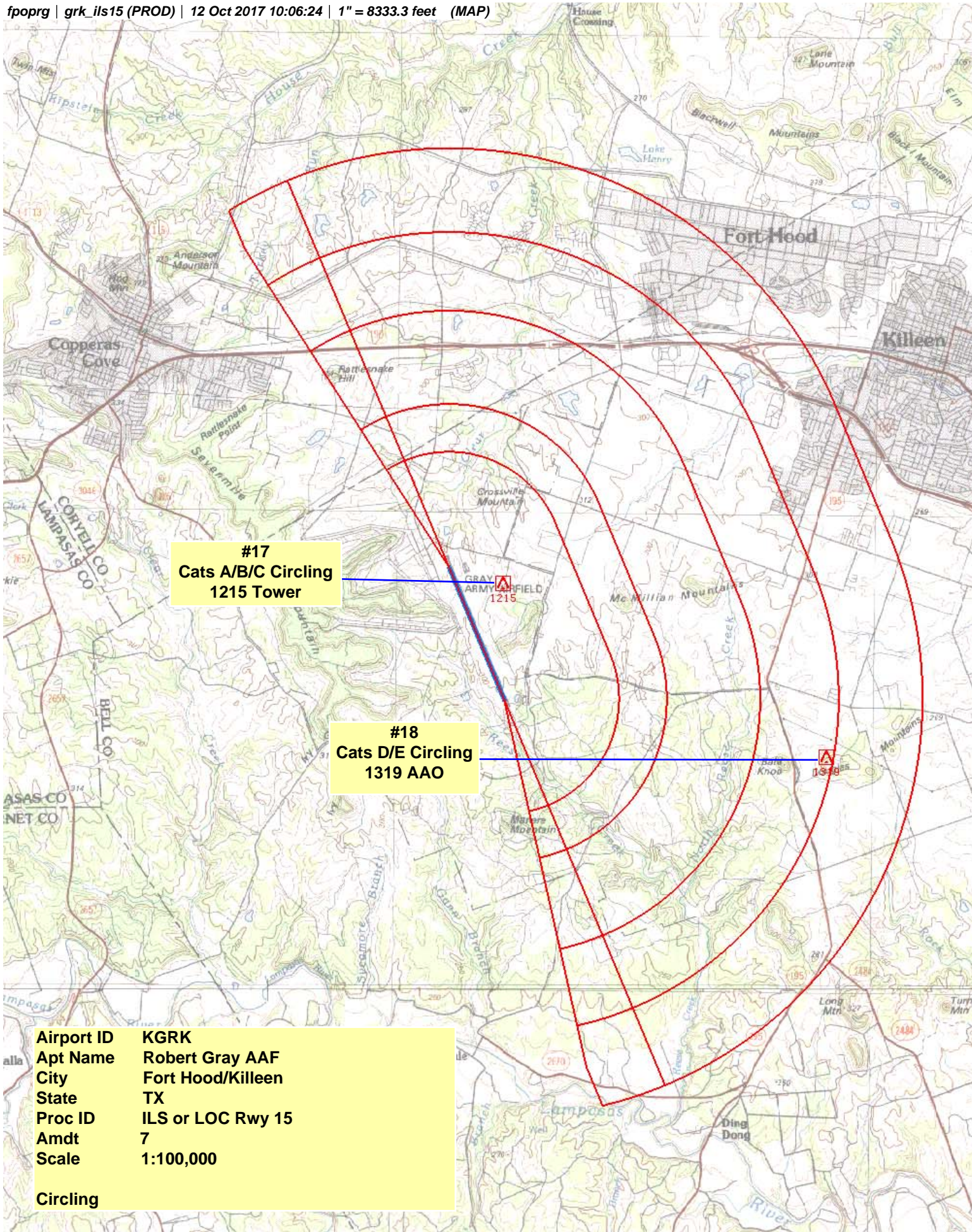






NM 1 2 3 4 5 6 7 8 9 10
FT 8000 16000 24000 32000 40000 48000 56000 64000

fpoprg | grk_ils15 (PROD) | 12 Oct 2017 10:06:24 | 1" = 8333.3 feet (MAP)



NM 7 14 21 28 35 42 49 56 63 70
FT 42000 84000 126000 168000 210000 252000 294000 336000 378000 420000
fpoprg | grk_alt15 (PROD) | 17 Oct 2017 09:38:43 | 1" = 41666.7 feet (MAP) 18 725 Gatesville 1220 Oglesby 1156 Mc Gregor 84 HEATHROW

Airport ID	KGRK
Apt Name	Robert Gray AAF
City	Fort Hood/Killeen
State	TX
Proc ID	ILS or LOC Rwy 15
Amdt	7
Scale	1:500,000

Alternate Missed Approach

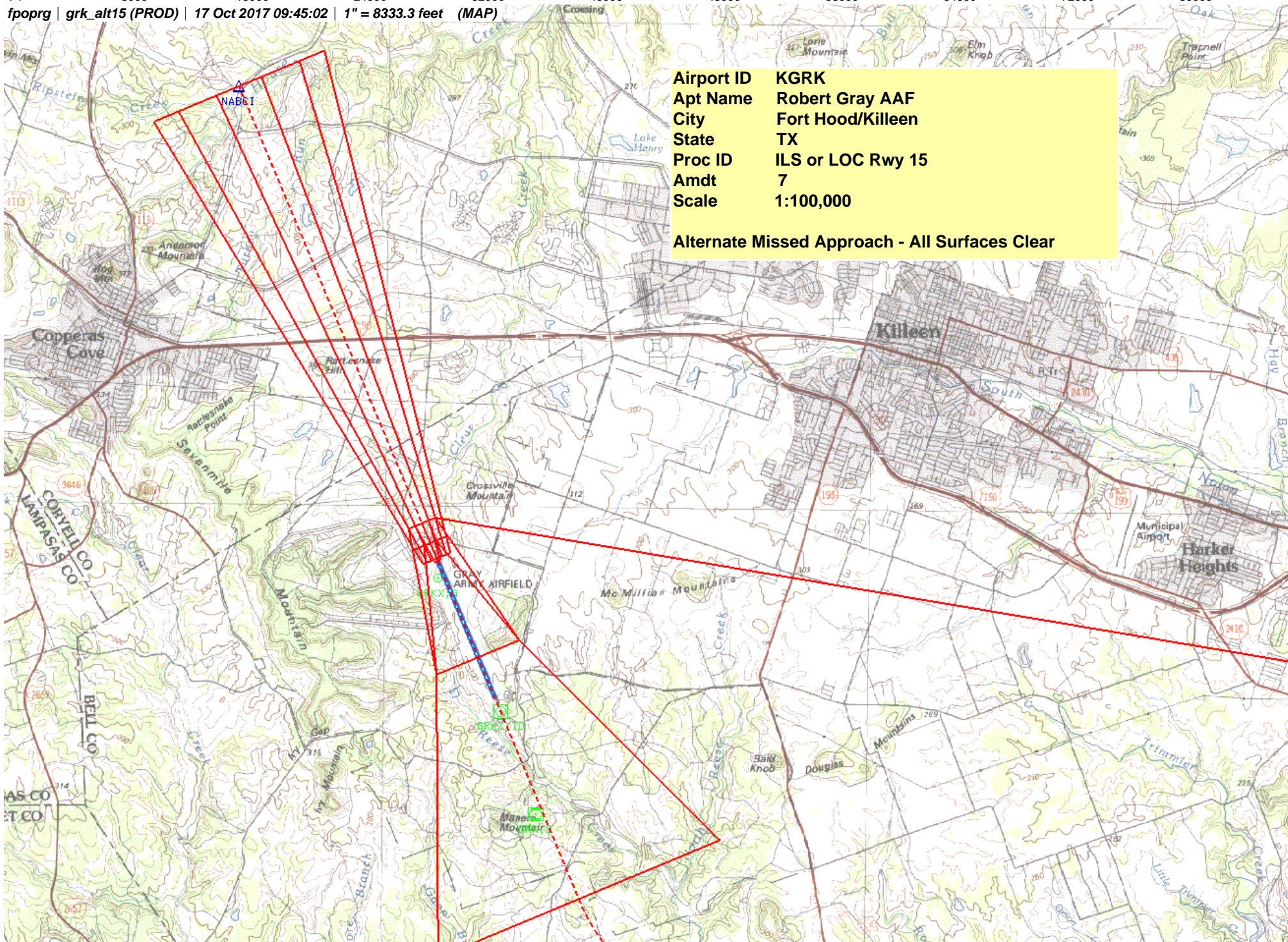
#15 Missed Level Surface 2049 Tower

**Missed Hold
996 Tower**

fpoprg | *grk_alt15 (PROD)* | 17 Oct 2017 09:45:02 | 1" = 8333.3 feet (MAP)

Airport ID	KGRK
Apt Name	Robert Gray AAF
City	Fort Hood/Killeen
State	TX
Proc ID	ILS or LOC Rwy 15
Amdt	7
Scale	1:100,000

Alternate Missed Approach - All Surfaces Clear



TERMINAL AIRSPACE DATA REQUIREMENTS

City: FORT HOOD/KILLEEN Airport Name: ROBERT GRAY AAF Procedure: ILS OR LOC RWY 15 Docket #:	State: TX ID: KGRK Amendment: AMDT 7
ALL DIST TO 1/100 NM; ELEV TO NEAREST FT; COORD TO 1/100 SEC; DEG TO 1/100 DG.	
1. Distance from 2. Width of 3. True Course of 4. High Terrain in 5. Distance from 6. Width of 7. True Course of 8. High Terrain in 9. Threshold Coordinates (if straight-in) 10. ARP Coordinates 11. Runway Approach End and distance furthest from ARP: Runway 33 Distance 0.82 NM 12. FAF Coordinates	THLD to 1000' point 3.55 FINAL segment at 1000' point 0.99 FINAL segment containing 1000' point 157.34 FINAL segment containing 1000' point 1159 THLD to 1500' point 5.35 FINAL segment at 1500' point 1.37 FINAL segment containing 1500' point 157.34 FINAL segment containing 1500' point 1159 31 04 47.72 N / 097 50 06.28 W 31 04 02.10 N / 097 49 44.10 W 31 10 06.83 N / 097 52 41.23 W
Remarks:	