

<b>Flight Procedure Tracking Form</b>		<b>Action:</b> AMENDMENT	<b>Task Type:</b> IAP	<b>Date Open:</b> 06/15/2017	<b>Task #:</b> 201706143103330M001	<b>Request #:</b> 20170614310333
<b>Procedure:</b> APPROACH RNAV (GPS) RWY 31 AMDT 1B			<b>Airport ID:</b> KHEZ	<b>Airport:</b> HARDY-ANDERS FIELD NATCHEZ-ADAMS COUNTY		<b>Reimbursable #:</b> NO
<b>City:</b> NATCHEZ	<b>ST:</b> MS	<b>GPS #:</b>	<b>Estimated Chart Date:</b> 09/14/2017		<b>FICO #:</b>	
<b>Fac ID:</b> N/A		<b>Fac. Type:</b>			<b>Specialist:</b> MARLON ROBINSON	
<b>Procedure Review</b>						
	<b>Rec'd</b>	<b>Rel'd</b>	<b>Full Name</b>	<b>Comments</b>		
<b>Lead:</b>	06/15/2017			QUALITY		
<b>QA:</b>				13 07/07/17 L.Zuest		
<b>Liaison:</b>				CHECKED		
<b>Procedure Comments:</b>			ENROUTE-NON			
			<b>Remark Type:</b>		INFORMATION	
FLIGHT INSPECTION REVIEW NOT REQUIRED - PROCESSED IAW FLIGHT INSPECTION TEAM (AJW-333) MEMO, MAY 30, 2017. P-NOTAM						

WAAS  
CH **90334**  
**W31A**

APP CRS  
**316°**

Rwy ldg **6500**  
TDZE **272**  
Apt Elev **272**

**RNAV (GPS) RWY 31**

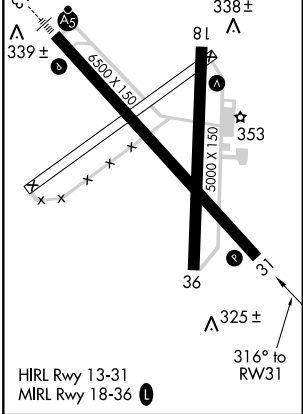
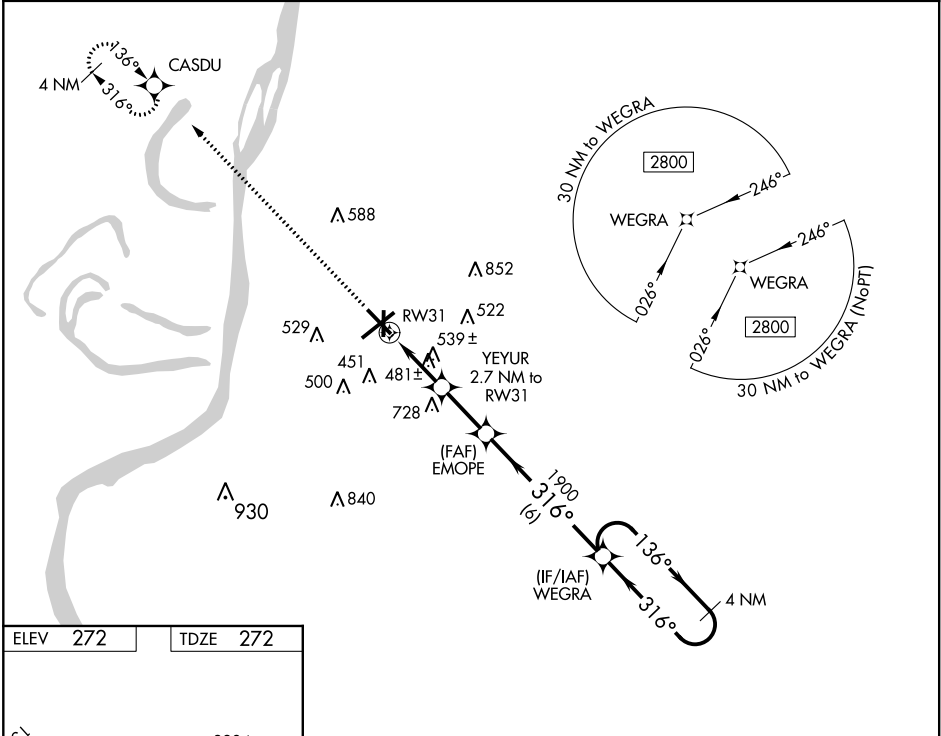
HARDY-ANDERS FIELD NATCHEZ-ADAMS COUNTY (HE/Z)



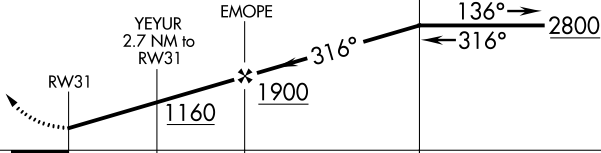
**⚠**

DME/DME RNP-0.3 NA. Helicopter visibility reduction below  $\frac{3}{4}$  SM NA. When local altimeter setting not received, use Vicksburg Tallulah Rgnl altimeter setting and increase all MDAs 140 feet: increase LP Cats C and D visibility  $\frac{1}{2}$  mile, LNAV Cats C and D visibility  $\frac{3}{8}$  mile, Circling Cat C visibility  $\frac{1}{2}$  mile, and Circling Cat D visibility  $\frac{1}{4}$  mile.

MISSED APPROACH: Climb to 2800 direct CASDU and hold.

AWOS-3 <b>124.675</b>	HOUSTON CENTER <b>120.975 299.6</b>	UNICOM <b>122.8 (CTAF) 0</b>
--------------------------	--	---------------------------------



2800	CASDU	Descent angle NA.		4 NM Holding Pattern	
					
					
CATEGORY		A	B	C	D
LP	MDA	740-1	468 (500-1)	740-1 $\frac{3}{8}$	468 (500-1 $\frac{3}{8}$ )
LNAV	MDA	800-1	528 (600-1)	800-1 $\frac{1}{2}$	528 (600-1 $\frac{1}{2}$ )
CIRCLING		800-1	528 (600-1)	800-1 $\frac{1}{2}$ 528 (600-1 $\frac{1}{2}$ )	840-2 568 (600-2)