

Flight Procedure Tracking Form		Action: FLIGHT CHECK	Task Type: IAP	Date Open: 06/09/2017	Task #: 2017060930983301001	Request #: 20170609309833
Procedure: RNAV (GPS) Y RWY 5R AMDT 2B			Airport ID: KRDU	Airport: RALEIGH-DURHAM INTL		Reimbursable #: NO
City: RALEIGH/DURHAM	ST: NC	GPS #:	Estimated Chart Date: 12/07/2017		FICO #:	
Fac ID: N/A		Fac. Type:		Specialist: THOMAS KIRKPATRICK		
Procedure Review						
	Rec'd	Rel'd	Full Name	Comments		
Lead:	06/09/2017					
QA:			Wilson 7/7/2017			
Liaison:						
Procedure Comments:			Remark Type: INFORMATION			
<p>DIGITAL PROCESS</p> <p>P-NOTAM: 1800 RVR NOTE PER AFS-400 AUTHORIZING 1800 RVR FOR LPV AND GLS APPROACH PROCEDURES. AND NEW LNAV/VNAV FINAL OBSTACLE.</p> <p>CONTACT: DION LANCIA 405-954-1267</p>						


WAAS CH 90213 W05B	APP CRS 052°	Rwy Idg 7500 TDZE 420 Apt Elev 435
--	------------------------	---

RNAV (GPS) Y RWY 5R

RALEIGH-DURHAM INTL (RDU)

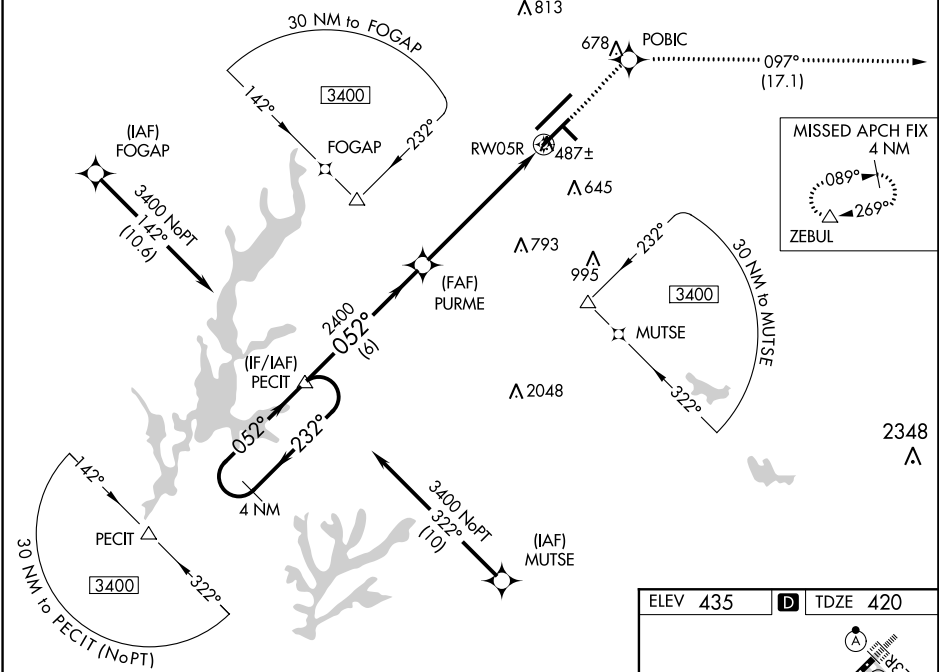
▼ For uncompensated Baro-VNAV systems, LNAV/VNAV NA below -15°C (5°F) or above 41°C (105°F). DME/DME RNP-0.3 NA. Simultaneous approach authorized with ILS or LOC Rwy 5L, RNAV (GPS) Y Rwy 5L, RNAV (RNP) Z Rwy 5L. Use of FD or AP providing RNAV track guidance required during simultaneous operations. LNAV procedure NA during simultaneous operations. For inop MALSR, increase LNAV/VNAV all Cats visibility to RVR 4500 and LNAV Cats C/D visibility to 1½ mile.

MALSR

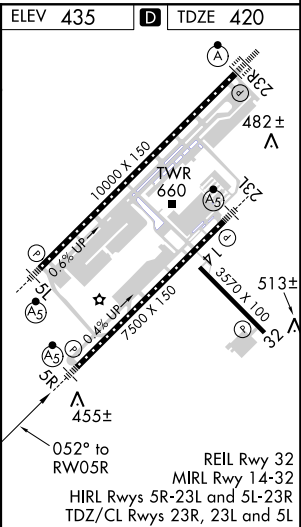


MISSED APPROACH:
Climb to 2600 direct POBIC and on track 097° to ZEBUL and hold.

D-ATIS	RALEIGH APP CON	(EAST) RALEIGH TOWER	(WEST)	(EAST) GND CON	(WEST)	CLNC DEL	CPDLC
123.8	128.3 307.9	127.45 257.8	119.3 257.8	121.9 348.6	121.7 348.6	120.1	
		Rwys 5R-23L and 14-32	Rwy 5L-23R	Rwys 5R-23L and 14-32	Rwy 5L-23R		



4 NM Holding Pattern		PECTIT	2600 ↑	POBIC ✱	tr 097°	ZEBUL △
3400 ←232° 052°→		PURME 2400		*LNAV only.		
GP 3.00° TCH 55		052° 2400		*1.4 NM to RW05R		
		6 NM		4.7 NM		1.4
CATEGORY	A	B	C	D		
LPV DA	620/24 200 (200-½)					
LNAV/ VNAV DA	690/24 270 (300-½)					
LNAV MDA	900/24 480 (500-½)			900/55 480 (500-1¼)		
CIRCLING	960-1 525 (600-1)			960-1½ 525 (600-1½)		1060-2 625 (700-2)



(RDU)
RALEIGH-DURHAM INTL
RALEIGH/DURHAM, NC
RNAV (GPS) Y RWY 5R, AMDT 2B
SCALE = 1:100,000

13. VNAV FINAL:
527 MSL TREE

