

Flight Procedure Tracking Form		Action: AMENDMENT	Task Type: IAP	Date Open: 10/31/2017	Task #: 2017060833205201024	Request #: 20170608332052
Procedure: RNAV (GPS) RWY 34 AMDT 2B			Airport ID: KABY	Airport: SOUTHWEST GEORGIA RGNL		Reimbursable #: NO
City: ALBANY	ST: GA	GPS #:	Estimated Chart Date: 02/01/2018		FICO #:	
Fac ID: N/A		Fac. Type:		Specialist: LUCAS MCCLOUD		
Procedure Review						
	Rec'd	Rel'd	Full Name	Comments		
Lead:	07/12/2017					
QA:		11/13	CLARK			
Liaison:						
Procedure Comments:			Remark Type: INFORMATION			
<p>HARD DATE PER MGMT/PRODUCTION FOR MAG VAR CHANGE</p> <p>FLIGHT INSPECTION REVIEW NOT REQUIRED - PROCESSED IAW FLIGHT INSPECTION TEAM (AJW-333) MEMO, MAY 30, 2017</p> <p>ABBREV AMDT</p> <p>ASSIGNED MAG VAR: KABY: OLD 2W - NEW 5W</p> <p>PENDING DATA USED FOR KABY</p> <p>CONTACT: ROBERT HAMILTON 405-954-4608; AJV-5422 POC</p>						



EXISTING

ALBANY, GEORGIA

AL-8 (FAA)

17061

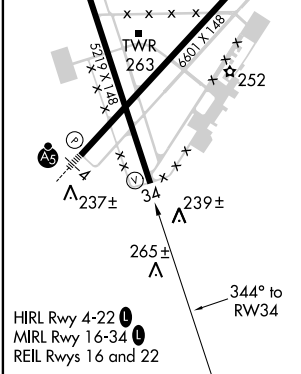
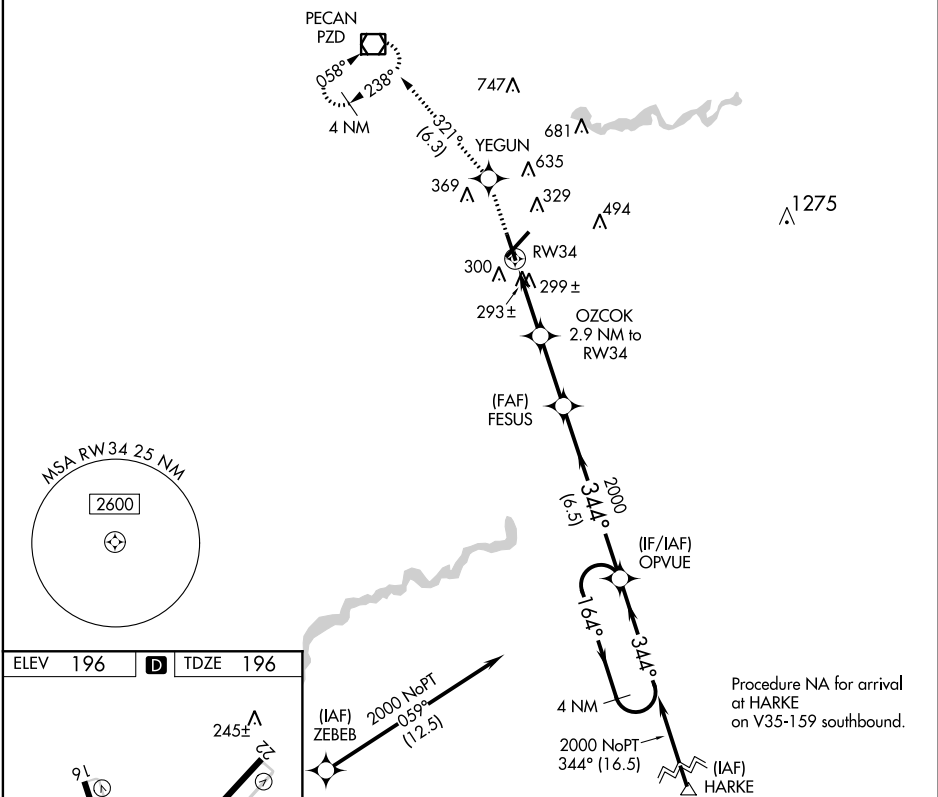
WAAS CH 97415 W34A	APP CRS 344°	Rwy Idg 5219 TDZE 196 Apt Elev 196
----------------------------------------	------------------------	---------------------------------------------------------------

RNAV (GPS) RWY 34
SOUTHWEST GEORGIA RGNL (ABY)

▼ For uncompensated Baro-VNAV systems, LNAV/VNAV NA below -7°C (19°F) or above 54°C (130°F). DME/DME RNP-0.3 NA. Helicopter visibility reduction below 1 SM NA.
▲ Procedure NA at night.

MISSED APPROACH: Climb to 2000 direct YEGUN and 2000 on track 321° to PZD VOR/DME and hold.

ATIS 133.05	JACKSONVILLE CENTER 125.75 226.8	ALBANY TOWER ★ 120.25 (CTAF) 0336.4	GND CON 121.9 348.6	UNICOM 122.95
-----------------------	--------------------------------------------	-----------------------------------------------	-------------------------------	-------------------------



2000	YEGUN	2000	PZD	FESUS	OPVUE	4 NM Holding Pattern
2000	tr 321°	2000	tr 321°	2000	2000	2000
*LNAV only.	OZCOK 2.9 NM to RW34	*1160	2000	344°	164°	GP 3.00° TCH 44
	2.9 NM	2.6 NM	6.5 NM			
CATEGORY	A	B	C	D		
LPV DA	495-1	299 (300-1)				
LNAV/VNAV DA	475-1	279 (300-1)				
LNAV MDA	560-1	364 (400-1)				
CIRCLING	640-1 444 (500-1)	660-1 464 (500-1)	660-1½ 464 (500-1½)	940-2½ 744 (800-2½)		

ALBANY, GEORGIA
Amdt 2A 15SEP16

31°32'N-84°12'W

SOUTHWEST GEORGIA RGNL (ABY)
RNAV (GPS) RWY 34

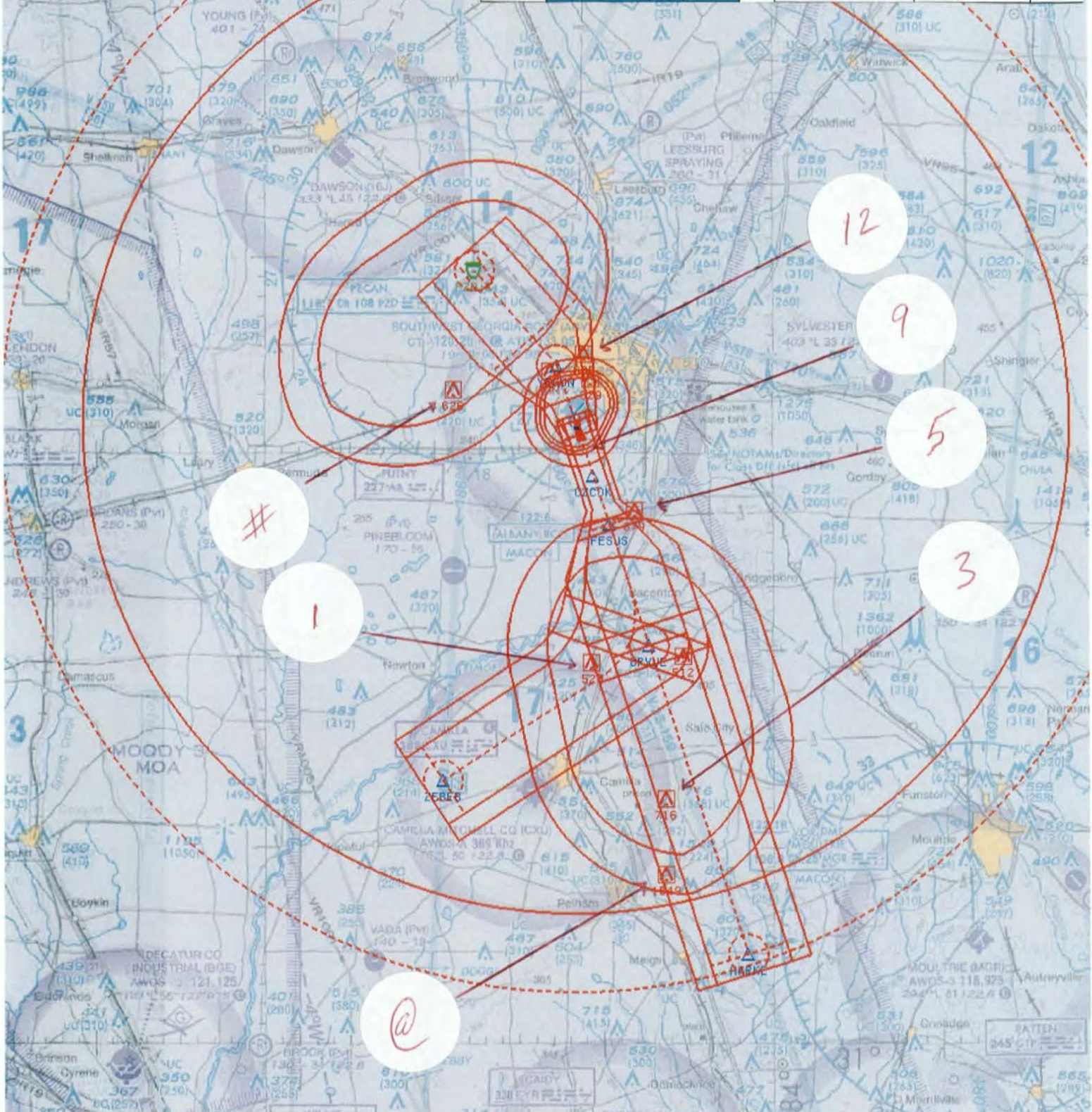
SE-4, 09 NOV 2017 to 07 DEC 2017

SE-4, 09 NOV 2017 to 07 DEC 2017

INFORMATION ONLY

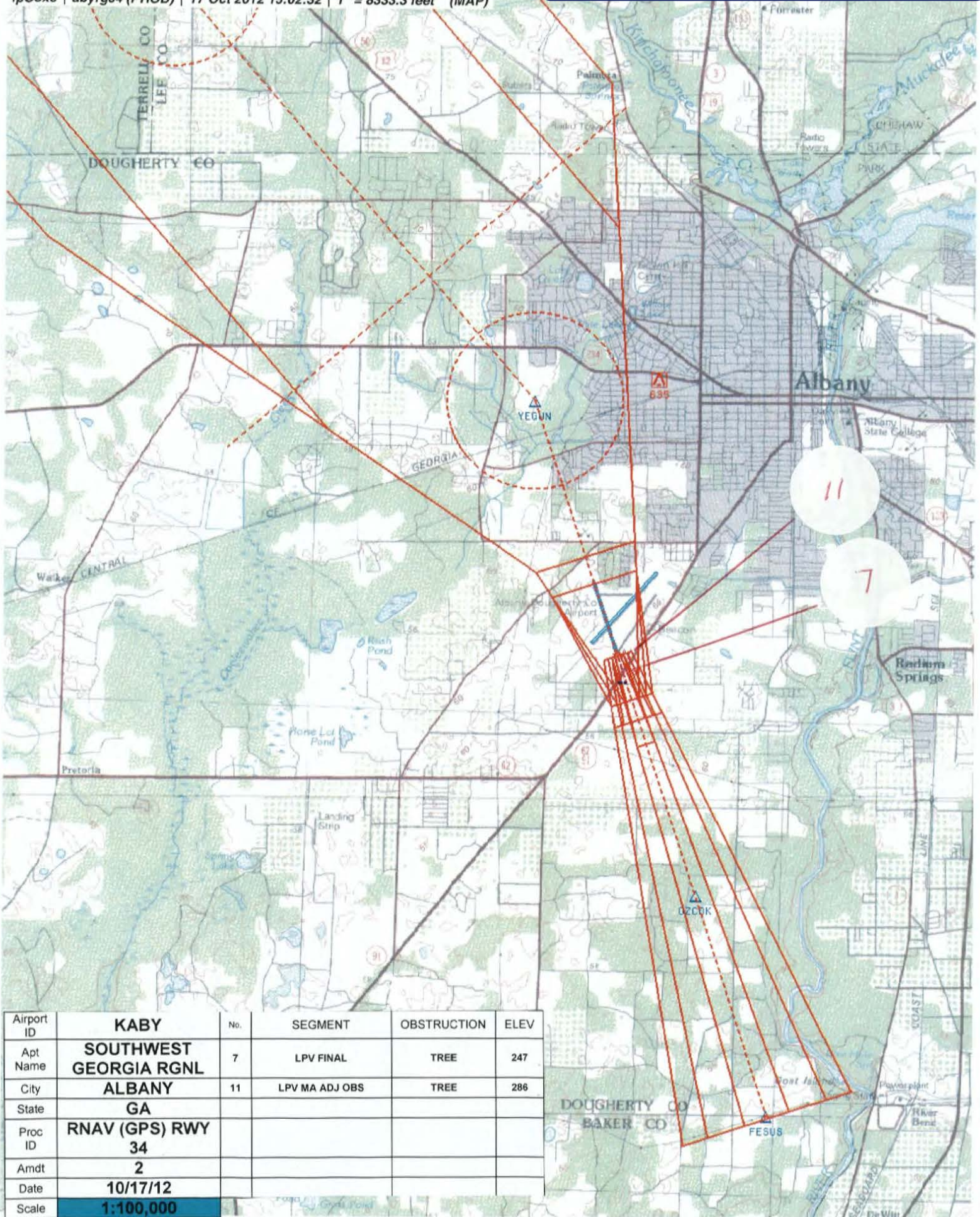
NM 7 14 21
FT 42000 84000 126000
iposxs | abyrg34 (PROD) | 17 Oct 2012 15:19:42 | 1" = 41666.7 feet

Airport ID	KABY	No.	SEGMENT	OBSTRUCTION	ELEV
Apt Name	SOUTHWEST GEORGIA RGNL	3	HARKE INITIAL / HIL	TOWER	716
City	ALBANY	1	ZEBEB INITIAL	TOWER	525
State	GA	5	INTERMEDIATE / LNAV FINAL	STACK	679
Proc ID	RNAV (GPS) RWY 34	9	LNAV STEPDOWN	TREE	299
Amdt	2	12	MISSED	TOWER	635
Date	10/17/12	#	HOLDING	TOWER	626
Scale	1:500,000	@	MSA	TOWER	1549

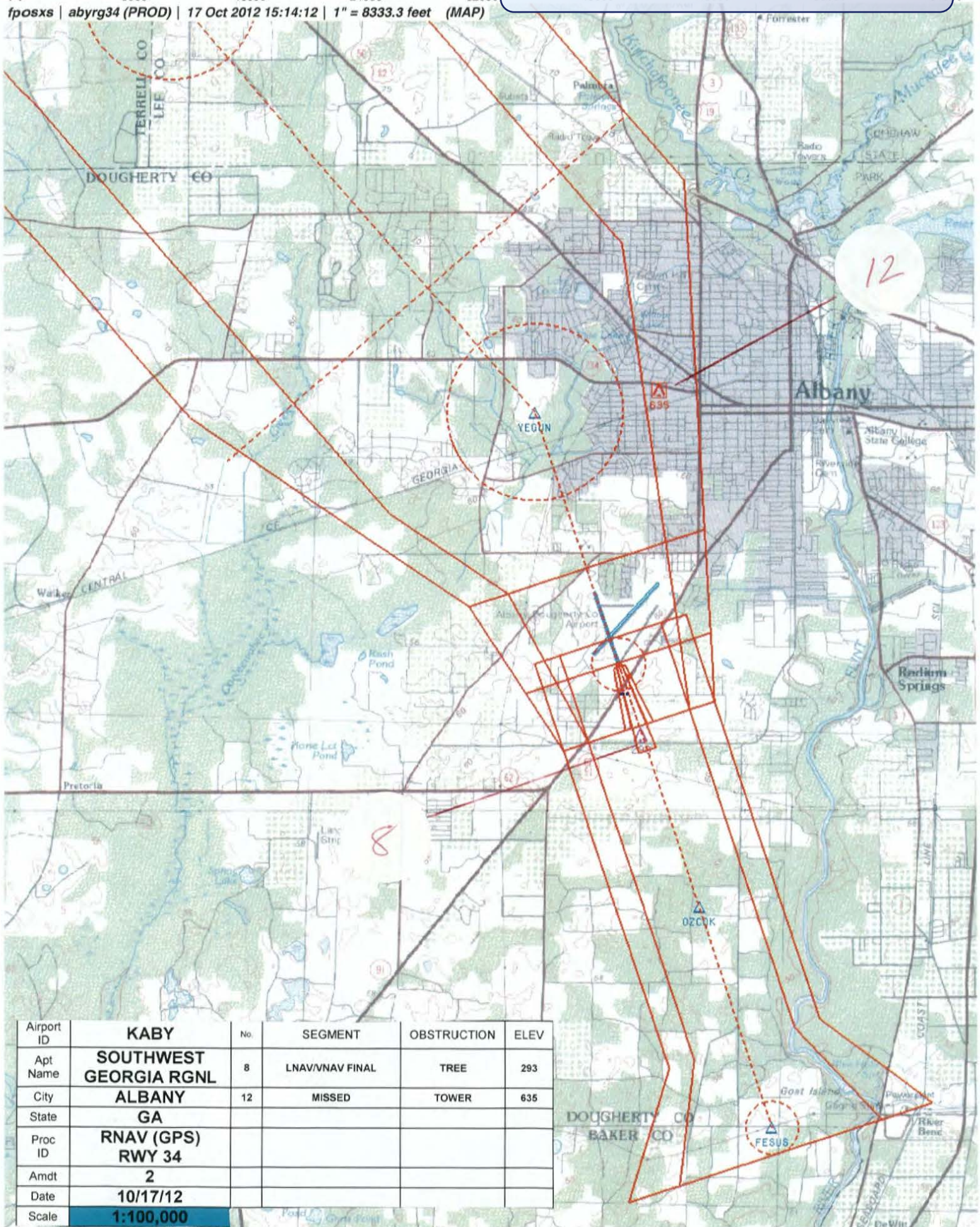


INFORMATION ONLY

NM
FT
1 2 3 4 5
8000 16000 24000 32000
fposxs | abyrg34 (PROD) | 17 Oct 2012 15:02:32 | 1" = 8333.3 feet (MAP)



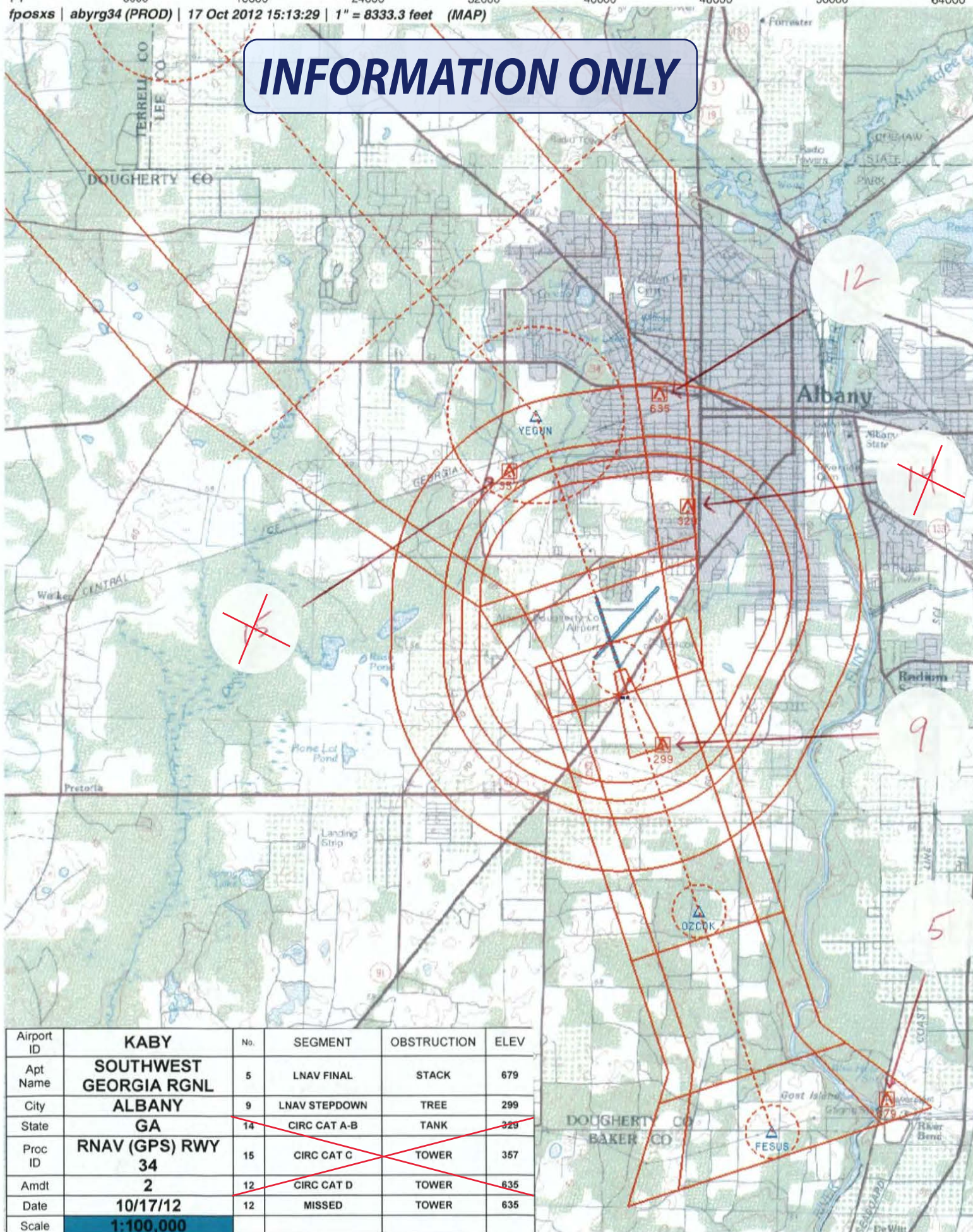
NM 1 2 3 4 5
FT 8000 16000 24000 32000
fposxs | *abyrg34* (PROD) | 17 Oct 2012 15:14:12 | 1" = 8333.3 feet (MAP)



Airport ID	KABY	No.	SEGMENT	OBSTRUCTION	ELEV
Apt Name	SOUTHWEST GEORGIA RGNL	8	LNAV/VNAV FINAL	TREE	293
City	ALBANY	12	MISSED	TOWER	635
State	GA				
Proc ID	RNAV (GPS) RWY 34				
Amdt	2				
Date	10/17/12				
Scale	1:100,000				

NM 1 2 3 4 5 6 7 8 9 10
FT 8000 16000 24000 32000 40000 48000 56000 64000
fposxs | abyrg34 (PROD) | 17 Oct 2012 15:13:29 | 1" = 8333.3 feet (MAP)

INFORMATION ONLY



NM 1 2 3 4 5 6 7 8 9 10
FT 8000 16000 24000 32000 40000 48000 56000 64000

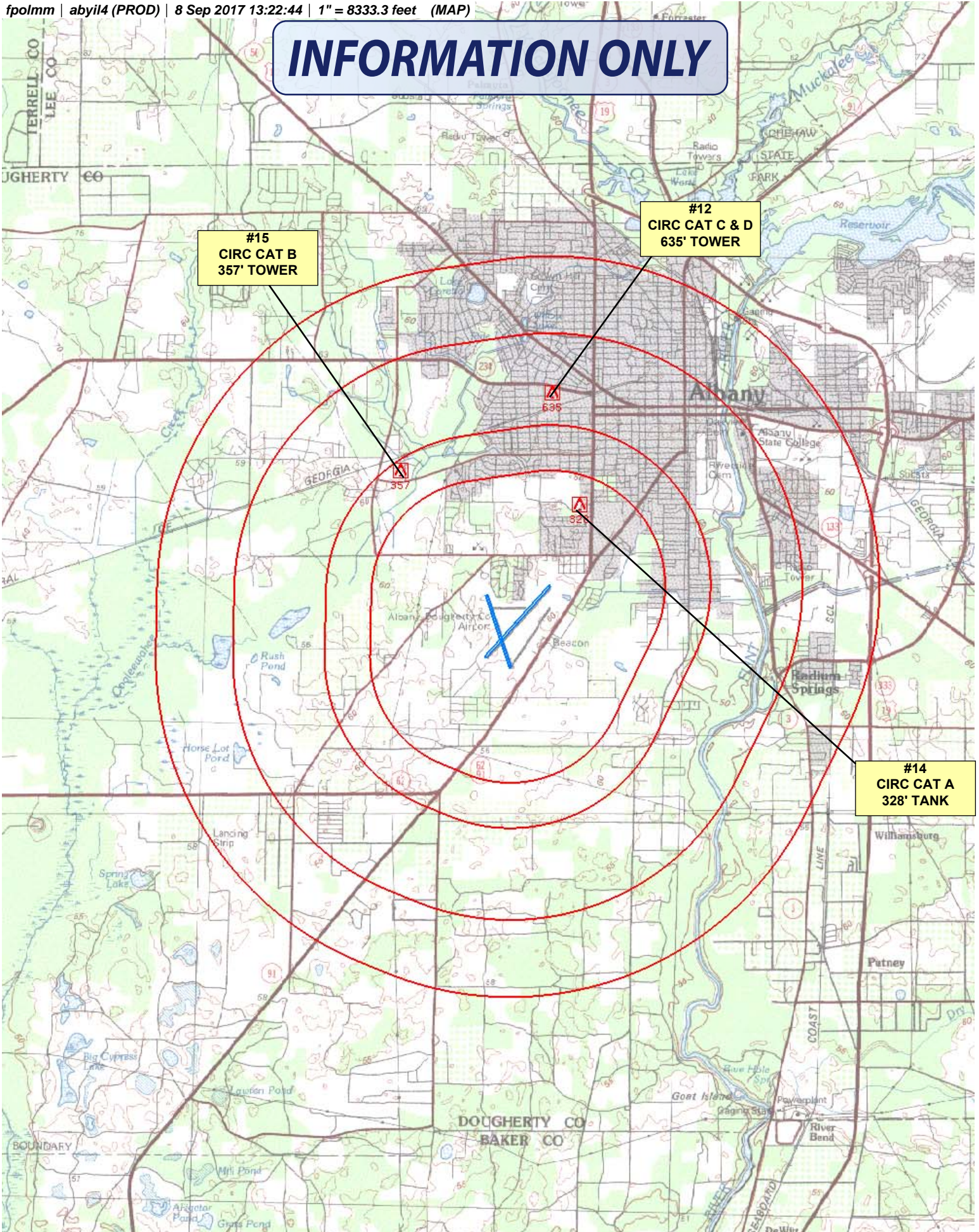
fpolmm | abyil4 (PROD) | 8 Sep 2017 13:22:44 | 1" = 8333.3 feet (MAP)

INFORMATION ONLY

#15
CIRC CAT B
357' TOWER

#12
CIRC CAT C & D
635' TOWER

#14
CIRC CAT A
328' TANK



INFORMATION ONLY

TERMINAL AIRSPACE DATA REQUIREMENTS

CITY: ALBANY

STATE: GA

AIRPORT NAME: SOUTHWEST GEORGIA RGNL

ID: KABY

PROCEDURE: RNAV (GPS) RWY 34

AMDT: 2

DOCKET # :

(96-AXX-X/Required/Not Required)

ALL DIST TO 1/100 NM; ELEV TO NEAREST FT; COORD TO 1/100 SEC; DEG TO 1/100 DG.

1. Distance from THLD to 1000' point 3.01
(Enter THLD, FAF, ARP, FACILITY, as appropriate)

2. Width of FINAL segment at 1000' point 1.20
(Enter appropriate segment , final, intermediate, etc.)

3. True Course of FINAL segment containing 1000' point 341.84

4. High Terrain in FINAL segment containing 1000' point 201

5. Distance from THLD to 1500' point 4.93
(If 1500' point in PT maneuvering area or holding pattern note in remarks)

6. Width of FINAL segment at 1500' point 1.57

7. True Course of FINAL segment containing 1500' point 341.84

8. High Terrain in FINAL segment containing 1500' point 201

9. Threshold Coordinates (if straight-in) ... 313139.60N / 0841139.22W

10. ARP Coordinates 313207.90N / 0841140.10W

11. Runway Approach End and distance furthest from ARP.....RWY 22

Distance .64 NM

12. FAF Coordinates 312623.67N / 0840938.21W
(Click to Select)

REMARKS: Approach/Drawing attached.