


Flight Procedure Tracking Form		Action: AMENDMENT	Task Type: IAP	Date Open: 06/07/2017	Task #: 201706072876980C001	Request #: 20170607287698
Procedure: APPROACH RNAV (GPS) RWY 35 ORIG-A			Airport ID: KMKN	Airport: COMANCHE COUNTY-CITY		Reimbursable #: NO
City: COMANCHE	ST: TX	GPS #:	Estimated Chart Date: 10/12/2017		FICO #:	
Fac ID: N/A		Fac. Type:			Specialist: MARLON ROBINSON	
Procedure Review						
	Rec'd	Rel'd	Full Name	Comments		
Lead:	06/07/2017					
QA:						
Liaison:						
Procedure Comments:			ENROUTE-NON			
			Remark Type: INFORMATION			
FLIGHT INSPECTION REVIEW NOT REQUIRED - PROCESSED IAW FLIGHT INSPECTION TEAM (AJW-333) MEMO, MAY 30, 2017. P-NOTAM						

COMANCHE, TEXAS

AL-10216 (FAA)

15232

WAAS CH 61136 W35A	APP CRS 353°	Rwy Idg TDZE 1374 Apt Elev 1387
----------------------------------------	------------------------	-----------------------------------------------------

RNAV (GPS) RWY 35

COMANCHE COUNTY-CITY (MKN)

⚠ When local altimeter setting not received, use Brownwood altimeter setting and increase all MDA 60 feet. DME/DME RNP-0.3 NA. Rwy 35 Straight-In and Circling minimums NA at night. Helicopter visibility reduction below 1 SM NA.

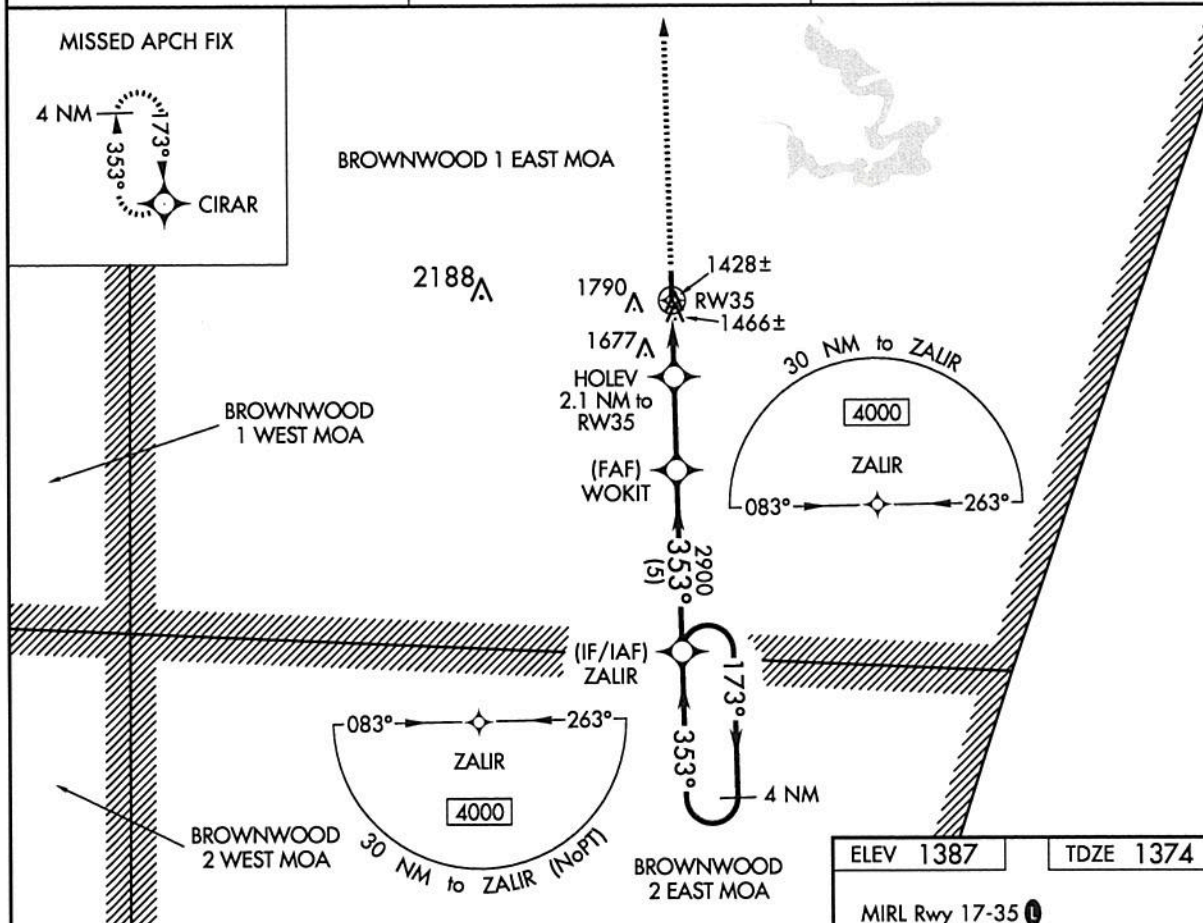
MISSED APPROACH: Climb to 4000 direct CIRAR and hold.

AWOS-3
118.575

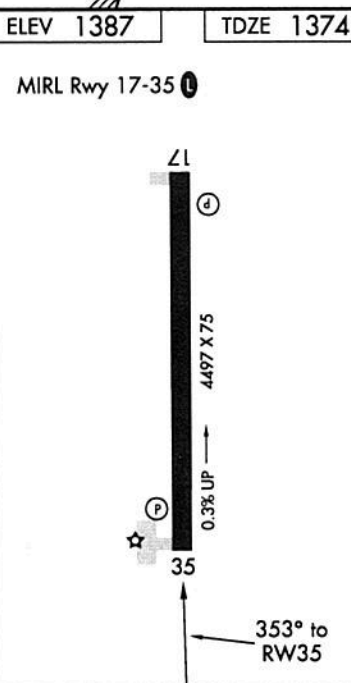
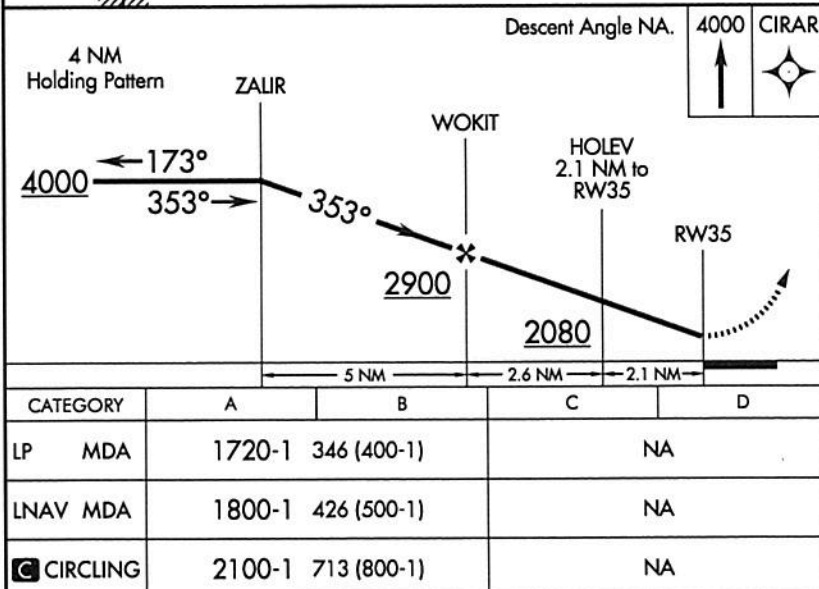
FORT WORTH CENTER
127.15 314.0

UNICOM
123.075 (CTAF)

SC-3, 27 APR 2017 to 25 MAY 2017



SC-3, 27 APR 2017 to 25 MAY 2017



COMANCHE, TEXAS
Orig 08JAN15

31°55'N-98°36'W

COMANCHE COUNTY-CITY (MKN)
RNAV (GPS) RWY 35