


<b>Flight Procedure Tracking Form</b>		<b>Action:</b> AMENDMENT	<b>Task Type:</b> IAP	<b>Date Open:</b> 06/07/2017	<b>Task #:</b> 2017060728769807001	<b>Request #:</b> 20170607287698
<b>Procedure:</b> APPROACH RNAV (GPS) RWY 17 ORIG-B			<b>Airport ID:</b> KO47	<b>Airport:</b> PRAGUE MUNI		<b>Reimbursable #:</b> NO
<b>City:</b> PRAGUE	<b>ST:</b> OK	<b>GPS #:</b>	<b>Estimated Chart Date:</b> 10/12/2017		<b>FICO #:</b>	
<b>Fac ID:</b> N/A		<b>Fac. Type:</b>		<b>Specialist:</b> MARLON ROBINSON		
<b>Procedure Review</b>						
	<b>Rec'd</b>	<b>Rel'd</b>	<b>Full Name</b>	<b>Comments</b>		
<b>Lead:</b>	06/07/2017			<div style="text-align: center;">  </div>		
<b>QA:</b>						
<b>Liaison:</b>						
<b>Procedure Comments:</b>			ENROUTE-NON			
			<b>Remark Type:</b> INFORMATION			
FLIGHT INSPECTION REVIEW NOT REQUIRED - PROCESSED IAW FLIGHT INSPECTION TEAM (AJW-333) MEMO, MAY 30, 2017. P-NOTAM						

PRAGUE, OKLAHOMA

AL-6872 (FAA)

16175

APP CRS	Rwy Idg	<b>3490</b>
<b>177°</b>	TDZE	<b>1041</b>
	Apt Elev	<b>1041</b>

**RNAV (GPS) RWY 17**

PRAGUE MUNI (O47)

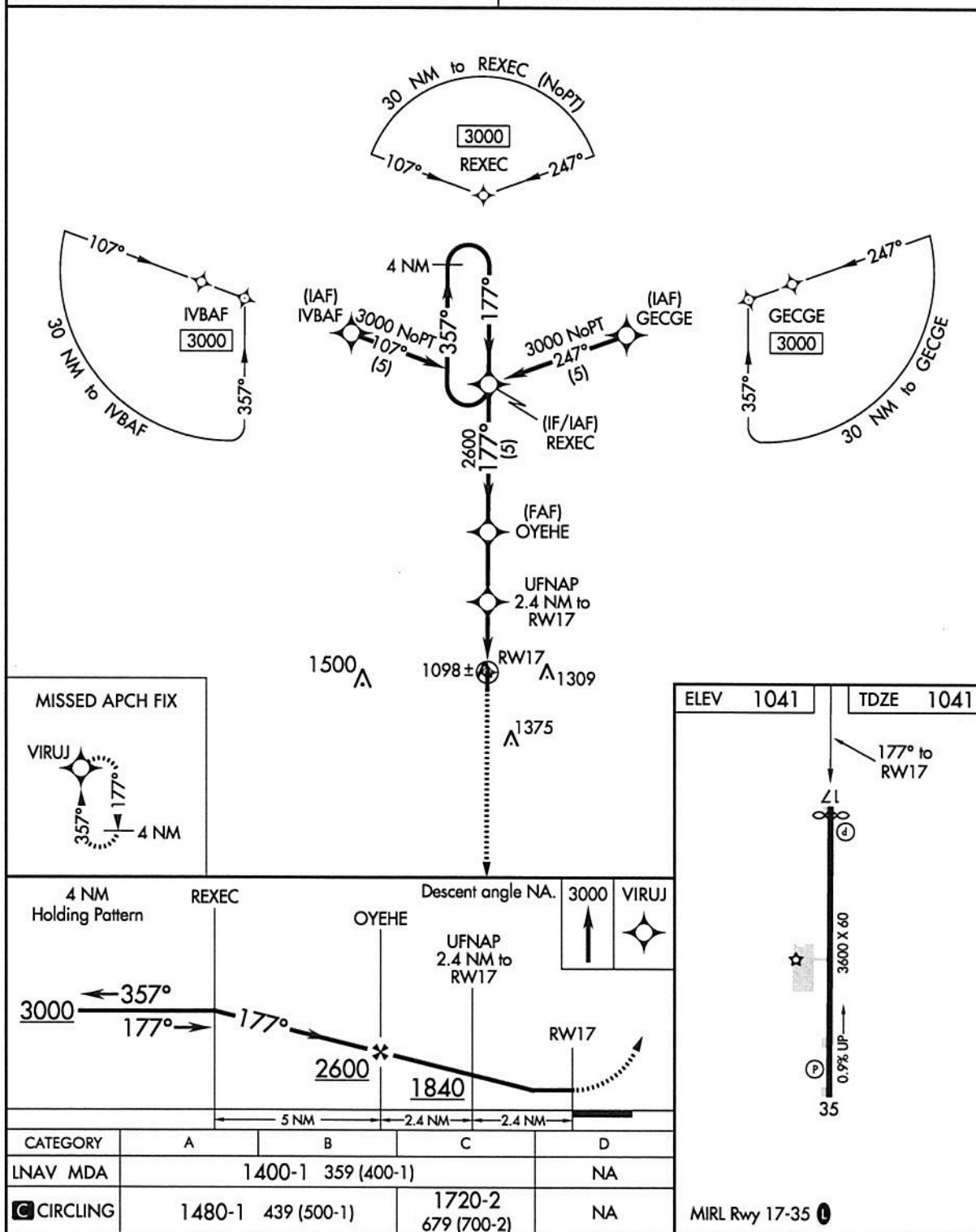


DME/DME RNP-0.3 NA. Helicopter visibility reduction below 1 SM NA. Procedure NA at night. Use Shawnee altimeter setting. When not received, use Seminole altimeter setting.

**MISSED APPROACH:**  
Climb to 3000 direct VIRUJ and hold.

FORT WORTH CENTER  
**132.2 338.35**

CTAF  
**122.9**



SC-1, 27 APR 2017 to 25 MAY 2017

SC-1, 27 APR 2017 to 25 MAY 2017

PRAGUE, OKLAHOMA

Orig-A 23JUN16

35°29'N-96°43'W

PRAGUE MUNI (O47)

**RNAV (GPS) RWY 17**