


<b>Flight Procedure Tracking Form</b>		<b>Action:</b> AMENDMENT	<b>Task Type:</b> IAP	<b>Date Open:</b> 06/07/2017	<b>Task #:</b> 2017060728769801002	<b>Request #:</b> 20170607287698
<b>Procedure:</b> APPROACH RNAV (GPS) RWY 19 ORIG-C			<b>Airport ID:</b> KMO3	<b>Airport:</b> STOCKTON MUNI		<b>Reimbursable #:</b> NO
<b>City:</b> STOCKTON	<b>ST:</b> MO	<b>GPS #:</b>	<b>Estimated Chart Date:</b> 10/12/2017		<b>FICO #:</b>	
<b>Fac ID:</b> N/A		<b>Fac. Type:</b>		<b>Specialist:</b> MARLON ROBINSON		
<b>Procedure Review</b>						
	<b>Rec'd</b>	<b>Rel'd</b>	<b>Full Name</b>	<b>Comments</b>		
<b>Lead:</b>				<div style="text-align: center;">  </div>		
<b>QA:</b>						
<b>Liaison:</b>						
<b>Procedure Comments:</b>			ENROUTE-NON			
			<b>Remark Type:</b> INFORMATION			
FLIGHT INSPECTION REVIEW NOT REQUIRED - PROCESSED IAW FLIGHT INSPECTION TEAM (AJW-333) MEMO, MAY 30, 2017. P-NOTAM						

STOCKTON, MISSOURI

AL-6771 (FAA)

15176

WAAS CH <b>50334</b> <b>W19A</b>	APP CRS <b>193°</b>	Rwy Idg <b>3060</b> TDZE <b>1037</b> Apt Elev <b>1042</b>
----------------------------------------	------------------------	-----------------------------------------------------------------

# RNAV (GPS) RWY 19

STOCKTON MUNI (MO3)

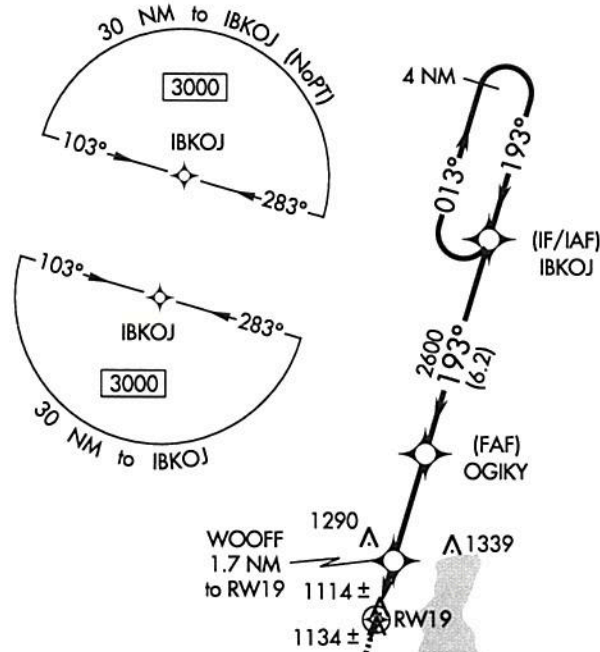
**Procedure NA at night. Use Nevada altimeter setting; when not received, use Springfield altimeter setting and increase all MDA 40 feet. DME/DME RNP-0.3 NA. Helicopter visibility reduction below 1 SM NA.**

**MISSED APPROACH:** Climb to 3000 direct EWETA and hold.

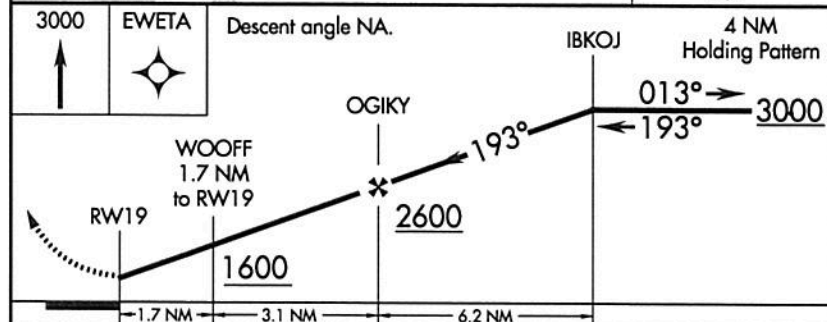
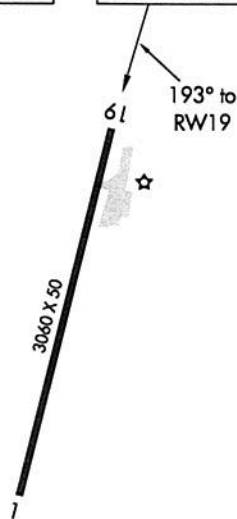
NEVADA MUNI AWOS-3  
**119.175**

SPRINGFIELD APP CON  
**124.95**

CTAF  
**122.90**



ELEV 1042 TDZE 1037



CATEGORY	A	B	C	D
LP MDA	1460-1	423 (500-1)		NA
LNAV MDA	1480-1	443 (500-1)		NA
CIRCLING	1540-1	498 (500-1)		NA

LRL Rwy 1-19

STOCKTON, MISSOURI  
Orig-B 25JUN15

37°40'N-93°49'W

STOCKTON MUNI (MO3)  
RNAV (GPS) RWY 19

NC-3, 27 APR 2017 to 25 MAY 2017

NC-3, 27 APR 2017 to 25 MAY 2017