

Flight Procedure Tracking Form		Action: AMENDMENT	Task Type: IAP	Date Open: 06/02/2017	Task #: 201706022819090C001	Request #: 20170602281909
Procedure: APPROACH RNAV (GPS) RWY 8 ORIG-B			Airport ID: K6D9	Airport: IOSCO COUNTY		Reimbursable #: NO
City: EAST TAWAS	ST: MI	GPS #:	Estimated Chart Date: 10/12/2017		FICO #:	
Fac ID: N/A		Fac. Type:			Specialist: MARLON ROBINSON	
Procedure Review						
	Rec'd	Rel'd	Full Name	Comments		
Lead:	06/05/2017			<div style="text-align: center;"> <div>QUALITY</div> <div>4</div> <div>CHECKED</div> </div> 6/13 CTabaka		
QA:						
Liaison:						
Procedure Comments:			ENROUTE-NON			
			Remark Type: INFORMATION			
FLIGHT INSPECTION REVIEW NOT REQUIRED - PROCESSED IAW FLIGHT INSPECTION TEAM (AJW-333) MEMO, MAY 30, 2017. P-NOTAM						

APP CRS	Rwy Idg	4802
086°	TDZE	605
	Apt Elev	606

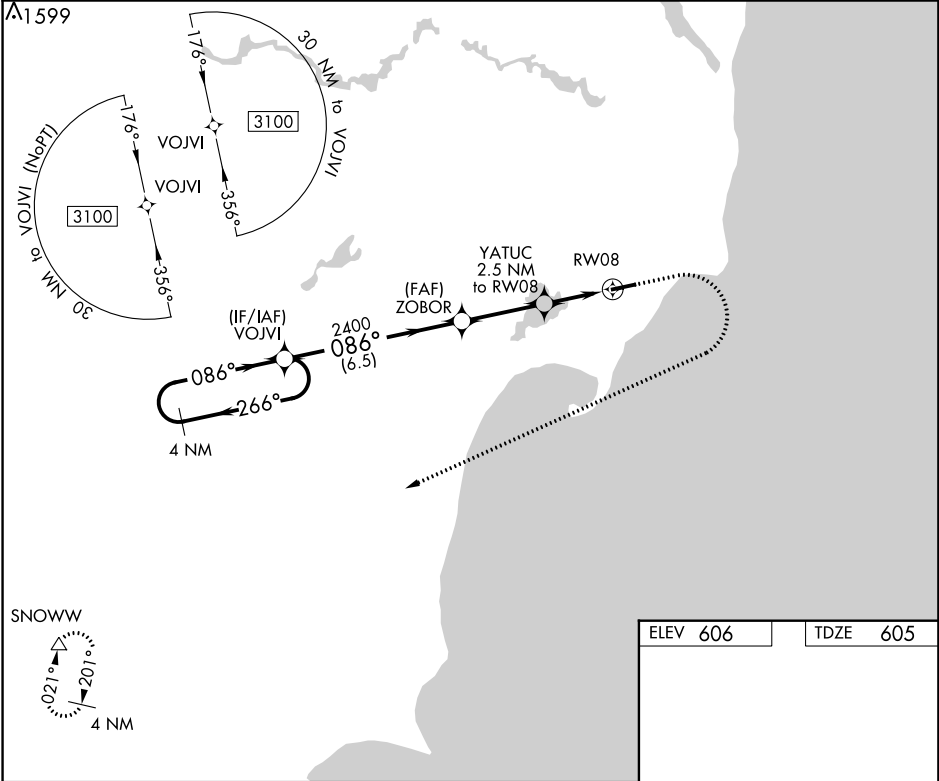
RNAV (GPS) RWY 8

IOSCO COUNTY (6D9)

▼ DME/DME RNP-0.3 NA. Procedure NA at night. Helicopter visibility reduction below 1 SM NA. Use Oscoda altimeter setting: when not received, use Bad Axe altimeter setting and increase all MDA 100 feet; increase LNAV Cats C and D visibilities ¼ mile, increase Circling visibility Cat C ¼ mile.

▲ NA MISSED APPROACH: Climb to 1100 then climbing right turn to 3500 direct SNOWW and hold.

OSCODA-WURTSMITH AWOS-3 118.7	MINNEAPOLIS CENTER 125.475 269.45	UNICOM 122.8 (CTAF)	122.85 0
-------------------------------------	--------------------------------------	------------------------	-----------------



	VOJVI		Descent angle NA.		1100	3500	SNOWW
	3100		ZOBOR		↑	↘	△
	086°		086°		YATUC 2.5 NM to RW08		
	266°		2400		RW08		
	086°		1440		086° to RW08		
	6.5 NM		3 NM		4802 X 75		
	2.5 NM				REIL Rwy 8 and 26 0		
CATEGORY	A	B	C	D	MIRL Rwy 8-26 0		
LNAV MDA	1000 - 1	395 (400-1)	1000 - 1 1/8	395 (400-1 1/8)			
CIRCLING	1120 - 1	514 (600-1)	1120 - 1 1/2	1160 - 2			
			514 (600-1 1/2)	554 (600-2)			