

Flight Procedure Tracking Form		Action: FLIGHT CHECK	Task Type: SID	Date Open: 06/09/2017	Task #: 2017052415560603002	Request #: 20170524155606
Procedure: SID CTRUS (RNAV) THREE SANTA MONICA CA KSMO			Airport ID: KSMO	Airport: SANTA MONICA MUNI		Reimbursable #: NO
City: SANTA MONICA	ST: CA	GPS #:	Estimated Chart Date: 02/01/2018		FICO #:	
Fac ID: N/A		Fac. Type:			Specialist: JIMMY HUGHES	
Procedure Review						
	Rec'd	Rel'd	Full Name	Comments		
Lead:	08/09/2017			QUALITY		
QA:				3		
Liaison:				CHECKED		
Procedure Comments:			ENROUTE	Remark Type: INFORMATION		QUALITY
CONTACT: ROBERT HAMILTON, IFP TEAM 2 LEAD, 405-954-8568						15 CHECKED

**TOP ALTITUDE:
IKAYE TRANSITION: AS ASSIGNED BY ATC;
ALL OTHER TRANSITIONS: FL230**

TAKEOFF MINIMUMS

Rwy 3: NA-ATC.

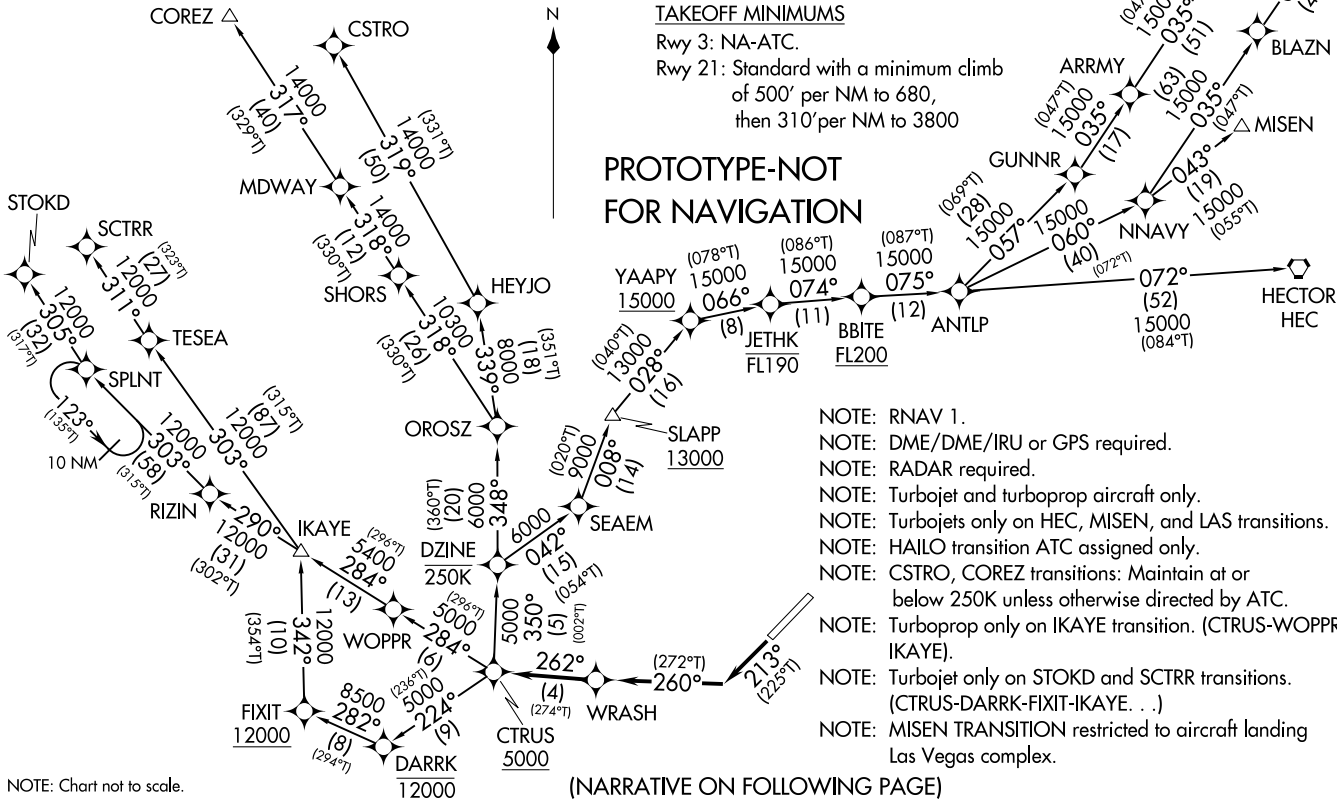
Rwy 21: Standard with a minimum climb
of 500' per NM to 680,
then 310' per NM to 3800

PROTOTYPE-NOT FOR NAVIGATION

- NOTE: RNAV 1.
NOTE: DME/DME/IRU or GPS required.
NOTE: RADAR required.
NOTE: Turbojet and turboprop aircraft only.
NOTE: Turbojets only on HEC, MISEN, and LAS transitions.
NOTE: HAILO transition ATC assigned only.
NOTE: CSTRO, COREZ transitions: Maintain at or below 250K unless otherwise directed by ATC.
NOTE: Turboprop only on IKAYE transition. (CTRUS-WOPPR-IKAYE).
NOTE: Turbojet only on STOKD and SCTRR transitions. (CTRUS-DARRK-FIXIT-IKAYE. . .)
NOTE: MISEN TRANSITION restricted to aircraft landing Las Vegas complex.

(NARRATIVE ON FOLLOWING PAGE)

ATIS
119.15
SANTA MONICA TOWER★
120.1 257.8
SOCAL DEP CON
125.2 323.275



DEPARTURE ROUTE DESCRIPTION

TAKEOFF RUNWAY 21: Climb heading 213° to intercept course 260° to WRASH, then on track 262° to cross CTRUS at or above 5000, thence

. . . . on assigned transition, IKAYE transition maintain altitude as assigned by ATC, all other transitions maintain FL230. Expect filed altitude 10 minutes after departure.

COREZ TRANSITION (CTRUS3.COREZ)

CSTRO TRANSITION (CTRUS3.CSTRO)

HAILO TRANSITION (CTRUS3.HAILO)

HECTOR TRANSITION (CTRUS3.HEC)

IKAYE TRANSITION (CTRUS3.IKAYE)

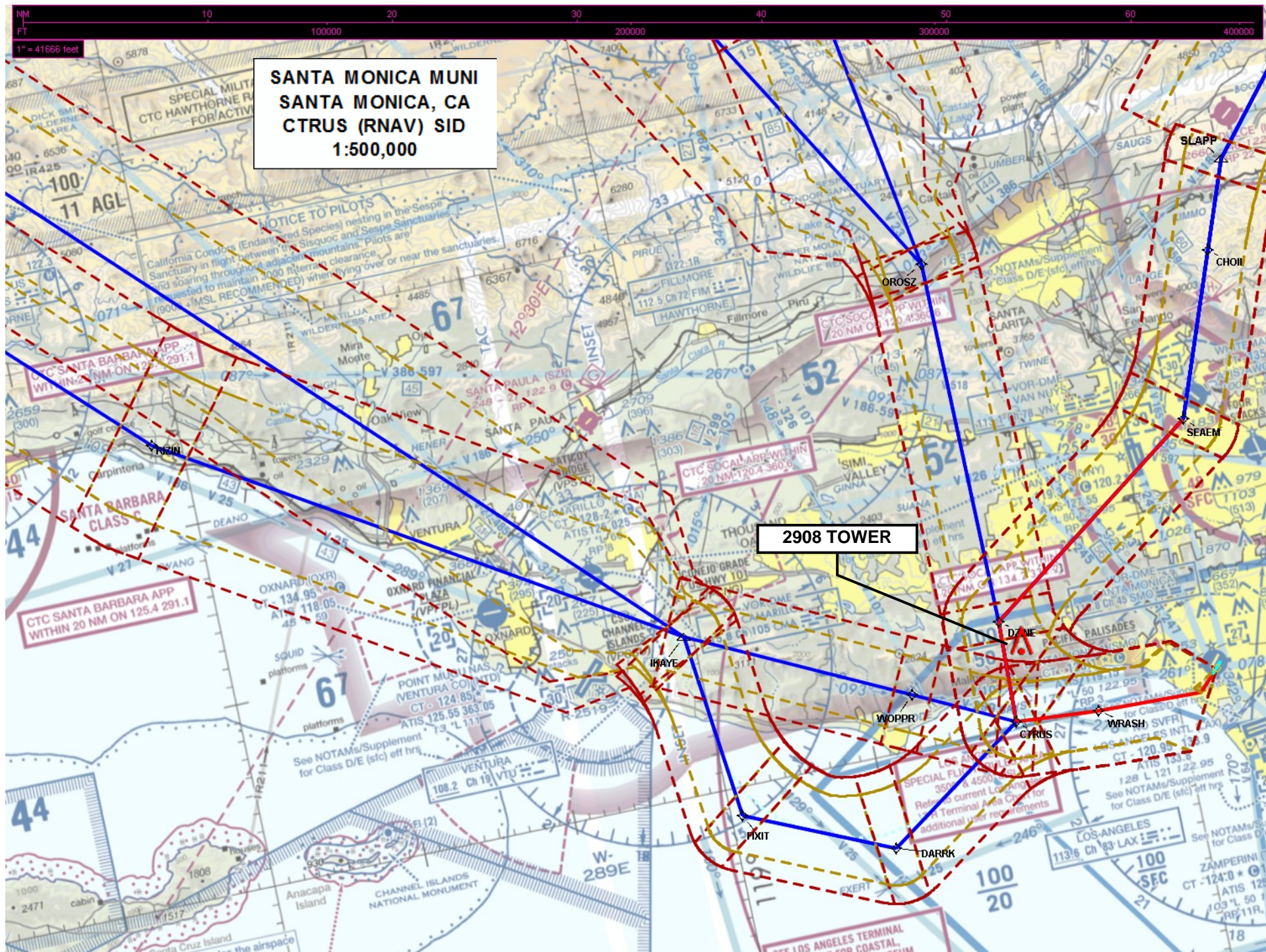
LAS VEGAS TRANSITION (CTRUS3.LAS)

MISEN TRANSITION (CTRUS3.MISEN)

SCTRR TRANSITION (CTRUS3.SCTRR)

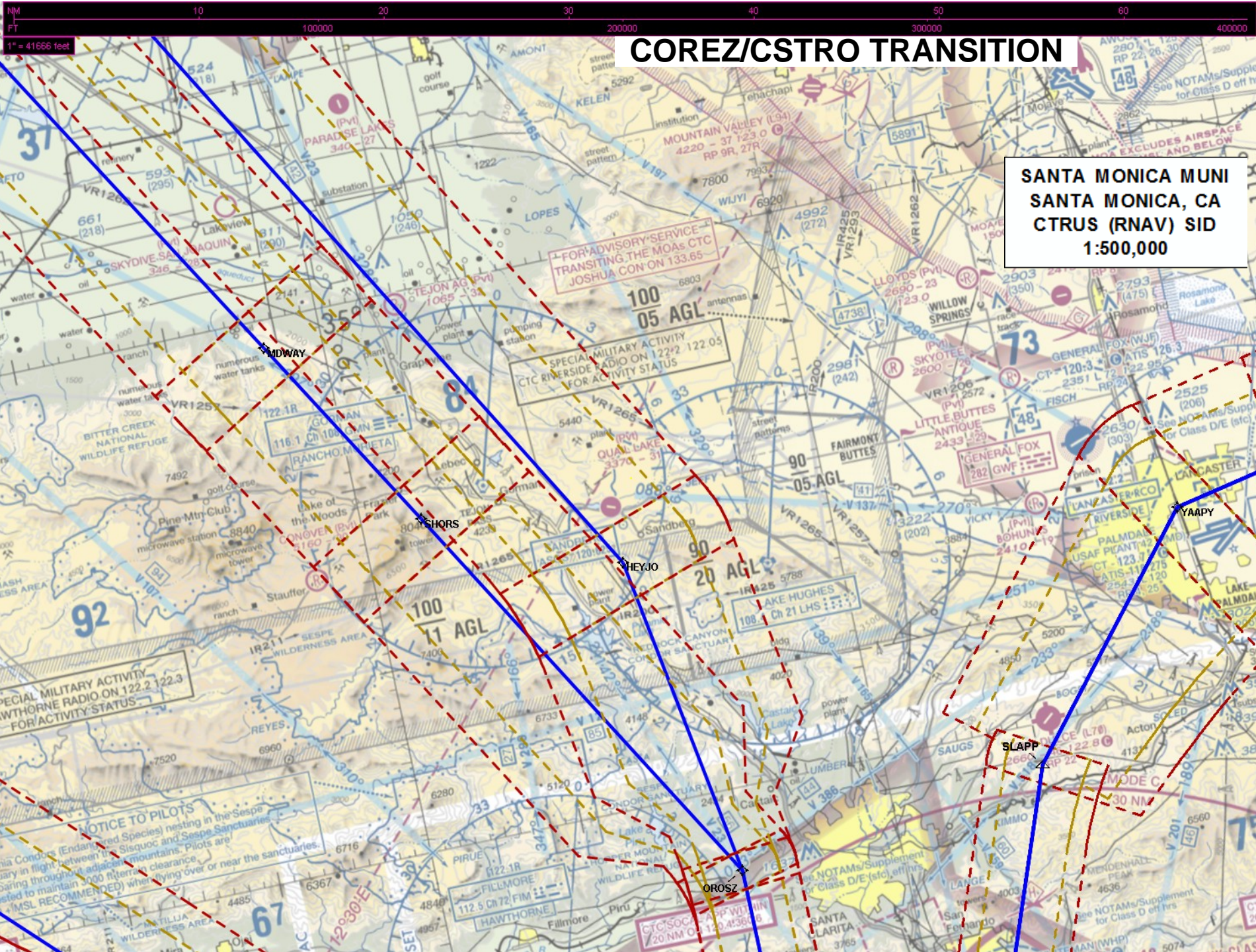
STOKD TRANSITION (CTRUS3.STOKD)

PROTOTYPE-NOT FOR NAVIGATION



SANTA MONICA MUNI
SANTA MONICA, CA
CTRUS (RNAV) SID
1:500,000

SANTA MONICA MUNI
SANTA MONICA, CA
CTRUS (RNAV) SID
1:500,000



COREZ/CSTRO TRANSITION

SANTA MONICA MUNI
SANTA MONICA, CA
CTRUS (RNAV) SID
1:500,000

COREZ/CSTRO TRANSITION

SANTA MONICA MUNI
SANTA MONICA, CA
CTRUS (RNAV) SID
1:500,000

1" = 41666 feet

The chart displays the following details:

- Airports:** COREZ, CSTRO, BAKERSFIELD, ARVIN, TAFT, MARICOPA, COYAMA, VOSBURGH.
- Communication:** Tower frequencies (e.g., 119.4 Ch 301, 129.3), Unicom (123.0), and other frequencies for various services.
- Navigational Aids:** VORTAC stations (e.g., 113.7, 113.7, 113.7), VOR/DME (e.g., 113.7, 113.7), and RNAV routes.
- Terrain:** Elevation contours and spot heights (e.g., 521, 523, 524).
- Obstacles:** Obstacle symbols indicating height above ground level (AGL) and mean sea level (MSL).
- Other Features:** Military activity areas, restricted areas (e.g., 10005 AGF), and various landmarks like mountains and lakes.

SANTA MONICA MUNI
SANTA MONICA, CA
CTRUS (RNAV) SID
1:500,000

1" = 41888 feet

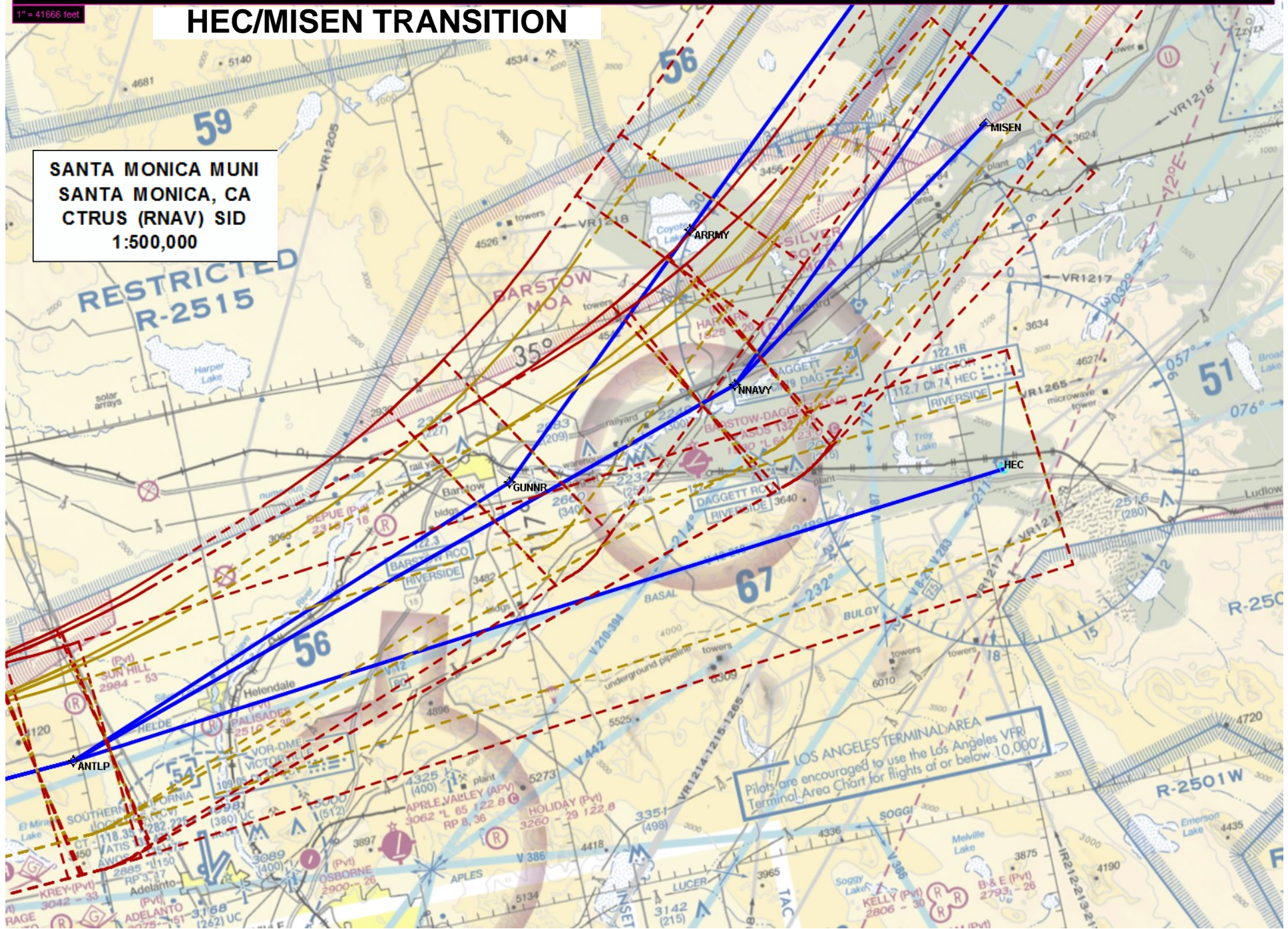
HEC/MISEN/LAS/HALO TRANSITION

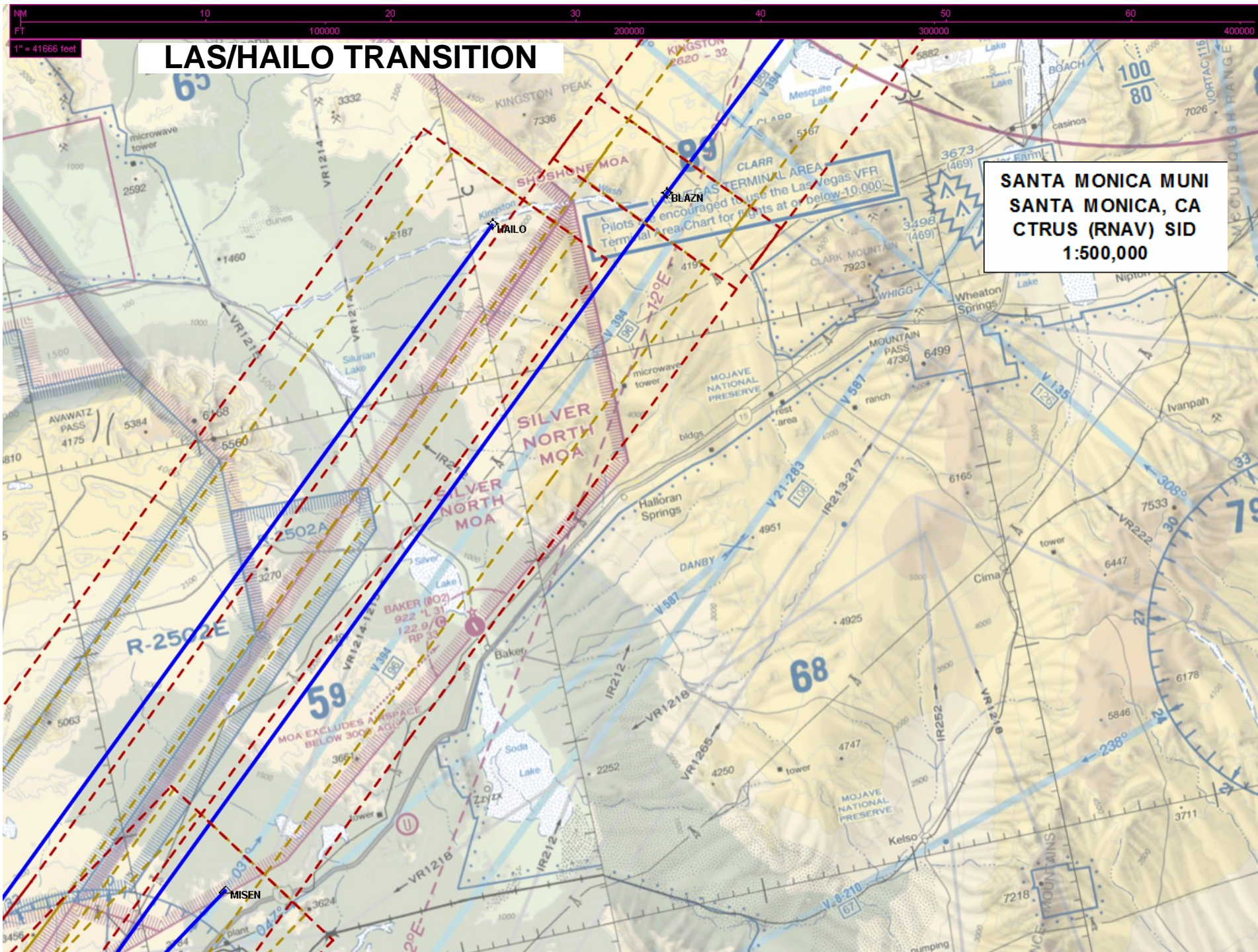
SANTA MONICA MUNI
SANTA MONICA, CA
CTRUS (RNAV) SID
1:500,000

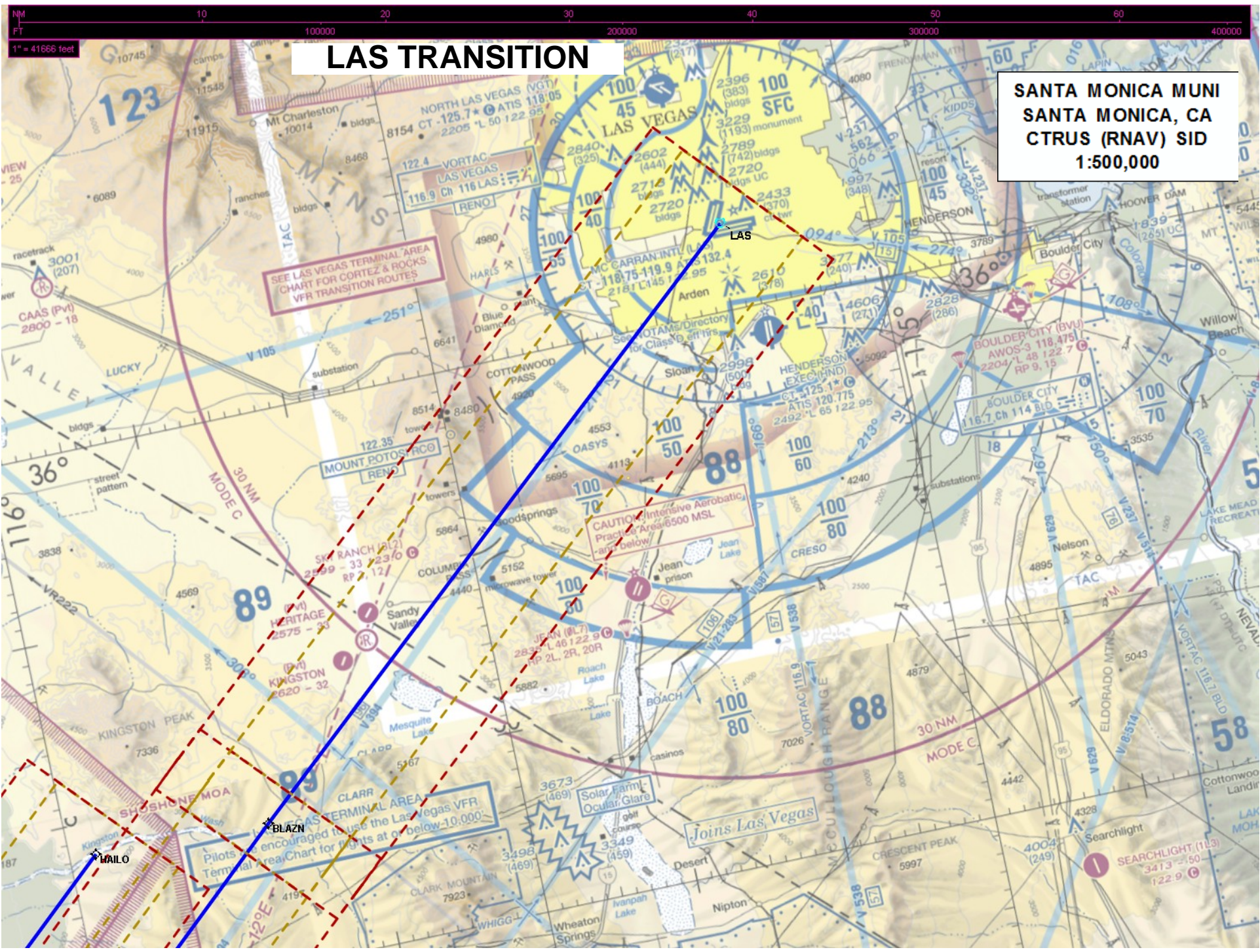
SANTA MONICA MUNI
SANTA MONICA, CA
CTRUS (RNAV) SID
1:500,000

HEC/MISEN TRANSITION

SANTA MONICA MUNI
SANTA MONICA, CA
CTRUS (RNAV) SID
1:500,000







LAS TRANSITION

SANTA MONICA MUNI
SANTA MONICA, CA
CTRUS (RNAV) SID
1:500,000

SEE LAS VEGAS TERMINAL AREA
CHART FOR CORTEZ & ROCKS
VFR TRANSITION ROUTES

CAUTION Intensive Aerobatic
Practice Area 6500 MSL
and below

CLARK COUNTY LAS VEGAS TERMINAL AREA
Pilots are encouraged to use the Las Vegas VFR
Terminal Area Chart for flights at or below 10,000'

Joins Las Vegas

SEARCHLIGHT (IL3)
3413 - 50
122.9