

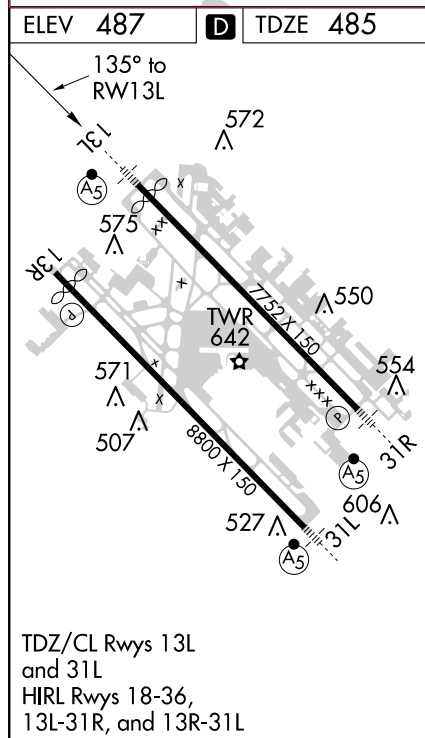
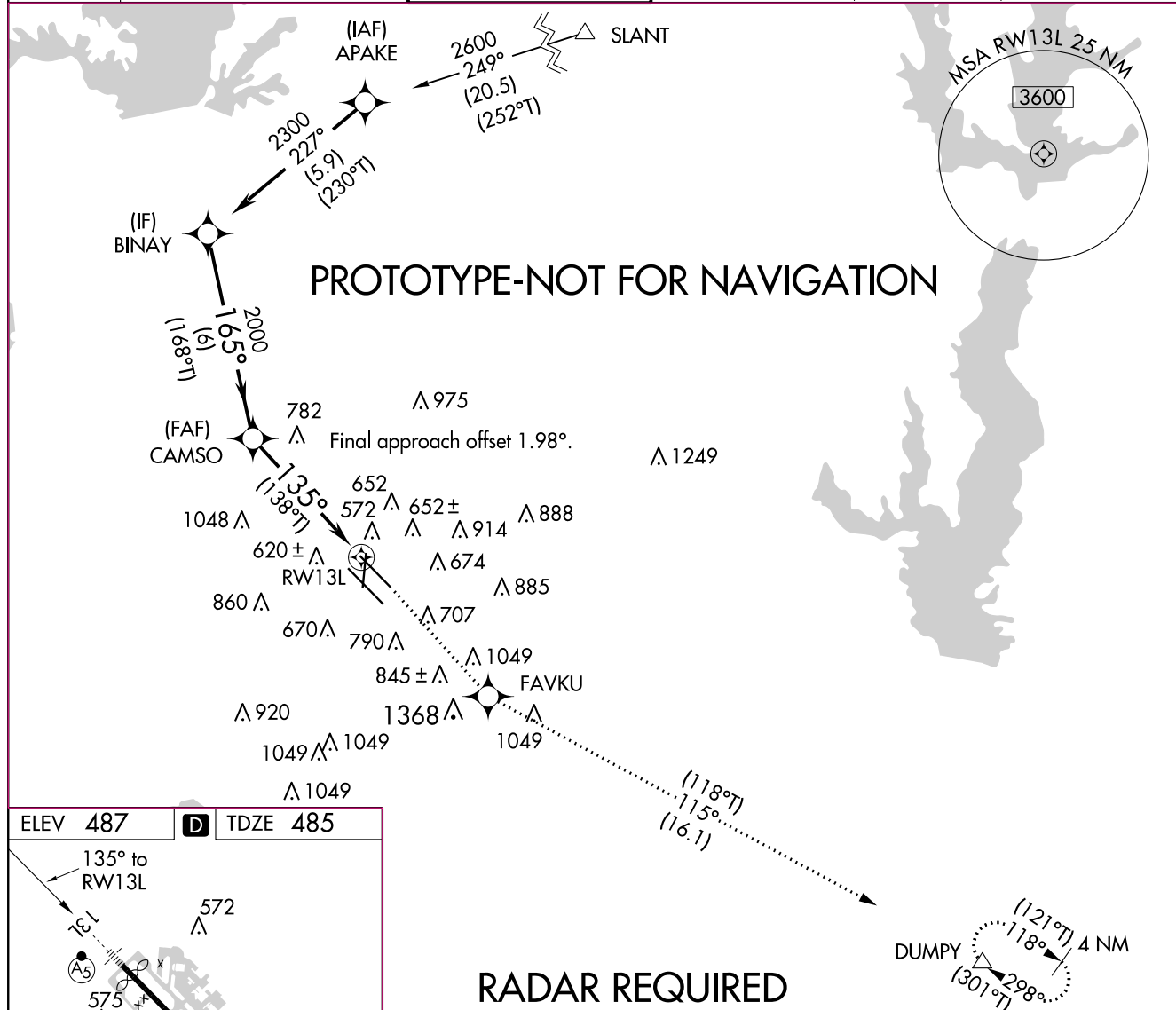


Flight Procedure Tracking Form		Action: AMENDMENT	Task Type: IAP	Date Open: 04/02/2018	Task #: 2017052231131101013	Request #: 20170522311311	
Procedure: RNAV (GPS) Y RWY 13L AMDT 1C			Airport ID: KDAL	Airport: DALLAS LOVE FIELD		Reimbursable #: NO	
City: DALLAS	ST: TX	GPS #:	Estimated Chart Date: 09/13/2018		FICO #:		
Fac ID: N/A		Fac. Type:		Specialist: NICHOLAS JACKSON			
Procedure Review							
	Rec'd	Rel'd	Full Name	Comments			
Lead:	03/22/2018	05/24/2018	DONALD LANIER				
QA:	05/24/2018						CWS 7/6/18
Liaison:							
Procedure Comments: ENROUTE-NON Remark Type: INFORMATION FLIGHT INSPECTION REVIEW NOT REQUIRED - PROCESSED IAW AIRCRAFT OPERATIONS GROUP (AJW-333) MEMO, DEC 22, 2017. PENDING AIRPORT AND RUNWAY DATA UTILIZED. CONTACTS: DONALD LANIER 405.954.8242 OR PATRICK MULQUEEN 405.954.4073							

APP CRS 135°	Rwy Idg TDZE Apt Elev	7352 485 487
------------------------	-----------------------------	---

RNAV (GPS) Y RWY 13L
DALLAS-LOVE FIELD (DAL)

RNP APCH.		MALSR		MISSED APPROACH: Climb to 3000 direct FAVKU and on track 115° to DUMPY and hold.		
						
D-ATIS 120.15	REGIONAL APP CON NORTH 124.3 282.275 SOUTH 125.2 343.65	LOVE TOWER 123.7 239.3		GND CON 121.75 348.6	CLNC DEL 127.9	CPDLC



CATEGORY	A		B	C	D
RNAV MDA	940/24 455 (500-½)		940/45 455 (500-¾)		
CIRCLING	1080-1 593 (600-1)	1140-1 653 (700-1)	1220-2 733 (800-2)	1520-3 1033 (1100-3)	