

<b>Flight Procedure Tracking Form</b>		<b>Action:</b> AMENDMENT	<b>Task Type:</b> IAP	<b>Date Open:</b> 05/22/2017	<b>Task #:</b> 2017052228954601001	<b>Request #:</b> 20170522289546
<b>Procedure:</b> VOR RWY 18 AMDT 1B			<b>Airport ID:</b> KTUP	<b>Airport:</b> TUPELO RGNL		<b>Reimbursable #:</b> NO
<b>City:</b> TUPELO	<b>ST:</b> MS	<b>GPS #:</b>	<b>Estimated Chart Date:</b> 11/08/2018		<b>FICO #:</b>	
<b>Fac ID:</b> OTB		<b>Fac. Type:</b> VOR_DME			<b>Specialist:</b> TARA MARTINELLI	
<b>Procedure Review</b>						
	<b>Rec'd</b>	<b>Rel'd</b>	<b>Full Name</b>		<b>Comments</b>	
<b>Lead:</b>	12/05/2017	08/14/2018	KISSY MAXFIELD			
<b>QA:</b>	08/14/2018		J ZEDER 08/17/2018			
<b>Liaison:</b>						
<b>Procedure Comments:</b>			<b>Remark Type:</b> INFORMATION			
<p>ABBREVIATED AMENDMENT: REMOVED HAB, DECOMMISSIONED</p> <p>REMOVED NOTAM FDC 7/7499, NEW CONTROLLING OBSTACLE</p> <p>CONTACT LONNIE EVERHART, (405) 954-4576</p>						



VOR/DME OTB  
**109.8**  
Chan **35**

APP CRS  
**196°**

Rwy Idg **7150**  
TDZE **344**  
Apt Elev **346**

**OLD**

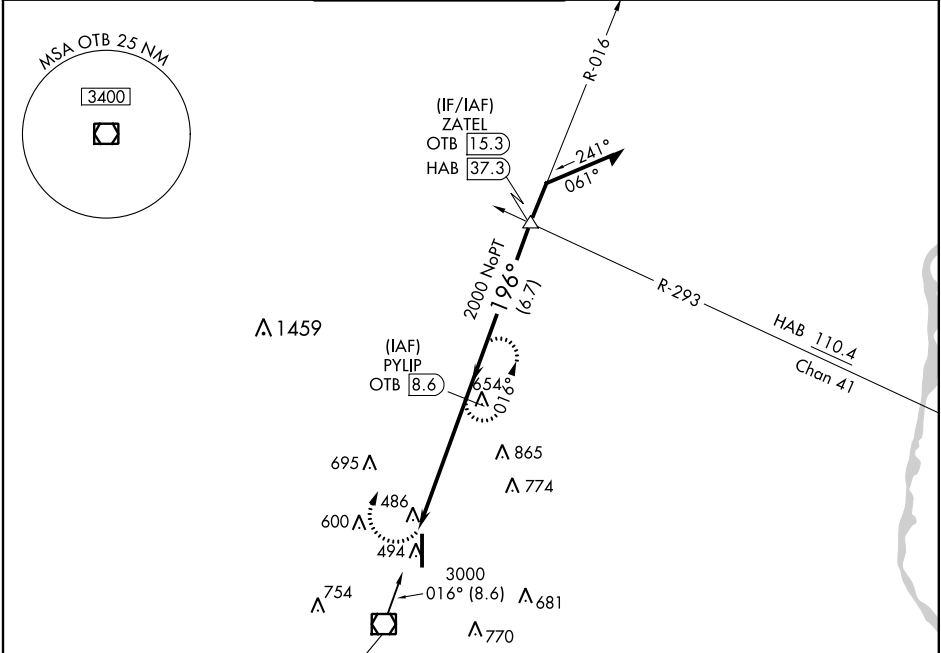
VOR/DME RWY 18

TUPELO RGNL (TUP)

▼ When local altimeter setting not received, use Columbus AFB altimeter setting and increase all MDA 120 feet. Increase S-18 Cats C and D visibility ¼ mile; Circling Cats C and D visibility ½ mile. VDP NA when using Columbus AFB altimeter setting.

▲ MISSED APPROACH: Climb to 1500 then climbing right turn to 3000 on OTB VOR/DME R-016 to PYLIP/OTB 8.6 DME and hold.

ASOS <b>133.525</b>	MEMPHIS CENTER <b>128.5 279.55</b>	TUPELO TOWER★ <b>118.775 (CTAF) 0 254.275</b>	GND CON <b>121.825 254.275</b>	UNICOM <b>128.85</b>
------------------------	---------------------------------------	--	-----------------------------------	-------------------------



1500

3000

OTB R-016

PYLIP OTB 8.6

PYLIP OTB 8.6

ZIMAG OTB 3.6

OTB 4.7

3.01° TCH 45

1.1 NM

3.9 NM

2000

2200

016°

196°

Remain within 10 NM

CATEGORY	A	B	C	D
S-18	740-1 396 (400-1)		740-1½ 396 (400-1½)	
CIRCLING	800-1 454 (500-1)		900-1½ 554 (600-1½)	1140-2½ 794 (800-2½)

ELEV 346

TDZE 344

REIL Rwy 18 0

HIRL Rwy 18-36 0

424 ± A

81

196° 5 NM from FAF

7150 X 150

TWR 423

494

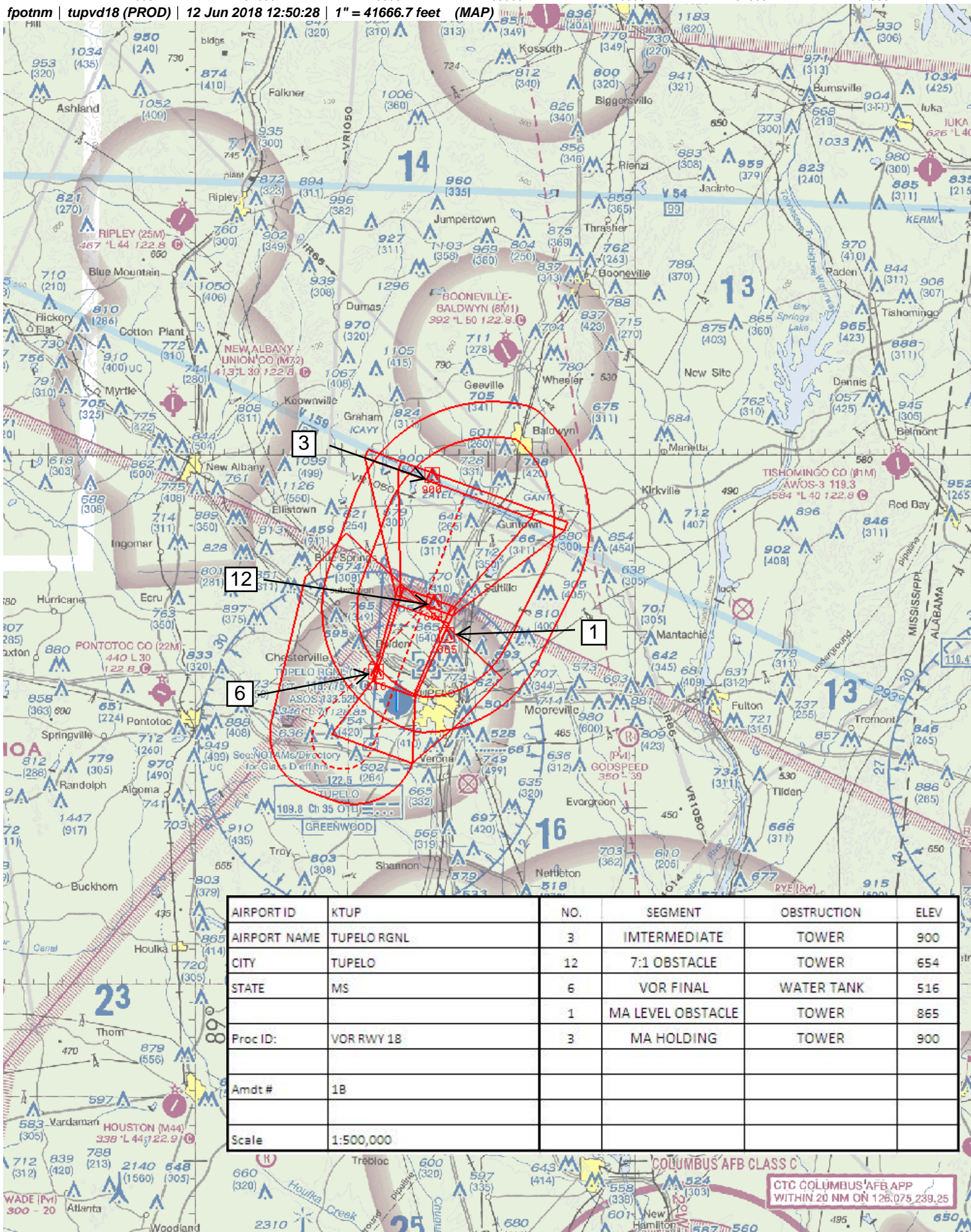
444

402 ±

36

A5

*fspotnm* | *tupvd18 (PROD)* | 12 Jun 2018 12:50:28 | 1" = 41666.7 feet (MAP)



AIRPORT ID	KTUP	NO.	SEGMENT	OBSTRUCTION	ELEV
AIRPORT NAME	TUPELO RGNL	3	INTERMEDIATE	TOWER	900
CITY	TUPELO	12	7:1 OBSTACLE	TOWER	654
STATE	MS	6	VOR FINAL	WATER TANK	516
		1	MA LEVEL OBSTACLE	TOWER	865
Proc ID:	VOR RWY 18	3	MA HOLDING	TOWER	900
Amdt #	1B				
Scale	1:500,000				

CTC COLUMBUS AFB APP  
WITHIN 20 NM ON 126.075 239.25







NM 1 2 3 4 5 6 7 8 9 10  
FT 8000 16000 24000 32000 40000 48000 56000 64000

fpotnm | tupvd18 (PROD) | 13 Jun 2018 09:44:24 | 1" = 8350.0 feet (MAP)

