

Flight Procedure Tracking Form		Action: FLIGHT CHECK	Task Type: IAP	Date Open: 05/23/2017	Task #: 201705112807930J001	Request #: 20170511280793
Procedure: RNAV (GPS) RWY 35 AMDT 2			Airport ID: K0F2	Airport: BOWIE MUNI		Reimbursable #: NO
City: BOWIE	ST: TX	GPS #:	Estimated Chart Date: 07/19/2018		FICO #:	
Fac ID: N/A		Fac. Type:			Specialist: LEO PALMER	
Procedure Review						
	Rec'd	Rel'd	Full Name	Comments		
Lead:	01/11/2018	03/13/2018	DAVID DANNER	QUALITY		
QA:	03/13/2018			20 B. Bickett 04/05/2018		
Liaison:				CHECKED		
Procedure Comments:			Remark Type: INFORMATION			
<p>ADDED LPV, LNAV/VNAV LINES OF MINIMIA.</p> <p>MAGVAR UPDATE: K0F2 OLD: 7E/90 NEW:4E/20</p> <p>PENDING DATA USED FOR K0F2 AIRPORT.</p> <p>CONTACT DEZ SILAGYI: (405) 954-5340</p>						

BOWIE, TEXAS

AL-5567 (FAA)

FIG

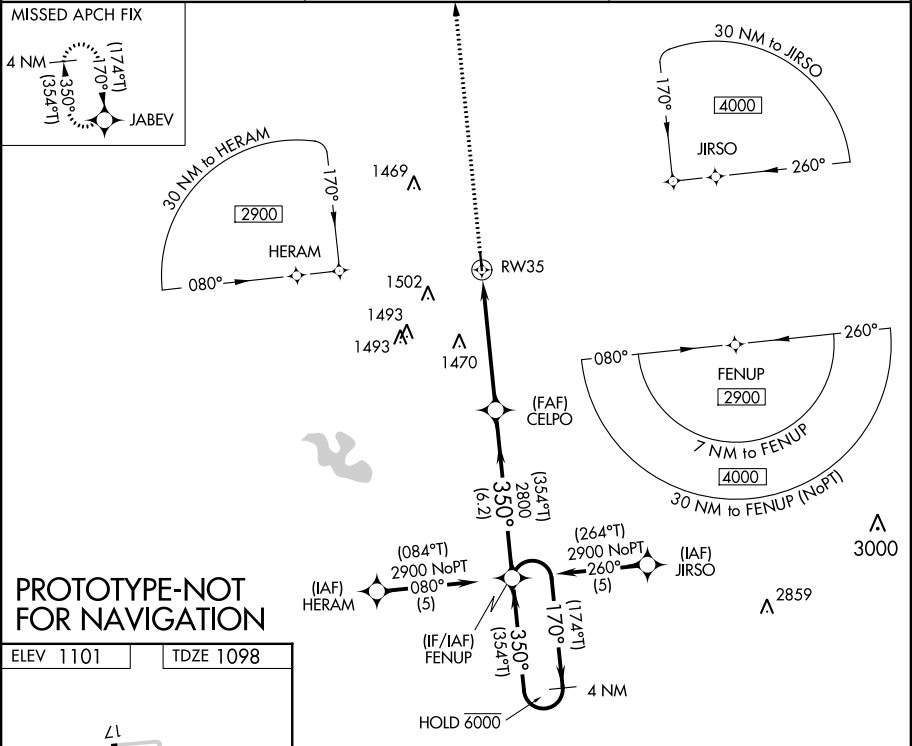
WAAS CH 58341 W35A	APP CRS 350°	Rwy Idg TDZE Apt Elev	3603 1098 1101
--	------------------------	-----------------------------	---

RNAV (GPS) RWY 35

BOWIE MUNI (ØF2)

RNP apch ▼ For uncompensated Baro-VNAV systems, LNAV/VNAV NA below -17C or above 54C. ▲	MISSED APPROACH: Climb to 2800 direct JABEV and hold.
---	---

AWOS-3 118.75	FORT WORTH CENTER 127.95 322.325	UNICOM 122.8 (CTAF) Ø
-------------------------	--	---------------------------------



0.5 NM UP

3.603 X 60

35

350° to RW35

MIRL Rwy 17-35

2800 JABEV

FENUP

4 NM Holding Pattern

(174°T) 170° 6000 2900

350° (354°T)

350° (354°T)

2800

CELPO

2800

*LNAV only

*1.2 NM to RW35

RW35

1.2 NM

4.1 NM

6.1 NM

GS 3.00° TCH 40

CATEGORY	A	B	C	D
LPV DA	1348-1	250 (300-1)		NA
LNAV/VNAV DA	1394-1	296 (300-1)		NA
LNAV MDA	1520-1	422 (500-1)	1520-1¼ 422 (500-1¼)	NA
C CIRCLING	1560-1 459 (500-1)	1680-1 579 (600-1)	1860-2¼ 759 (800-2¼)	NA

BOWIE, TEXAS

Amdt 2 FIG

33°36'N-97°47'W

BOWIE MUNI (ØF2)

RNAV (GPS) RWY 35

BOWIE, TEXAS

OLD

AL-5567 (FAA)

17341

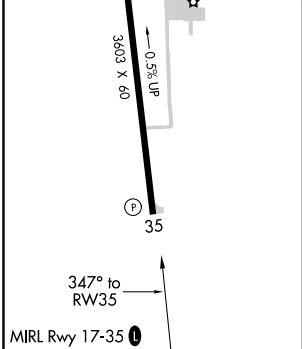
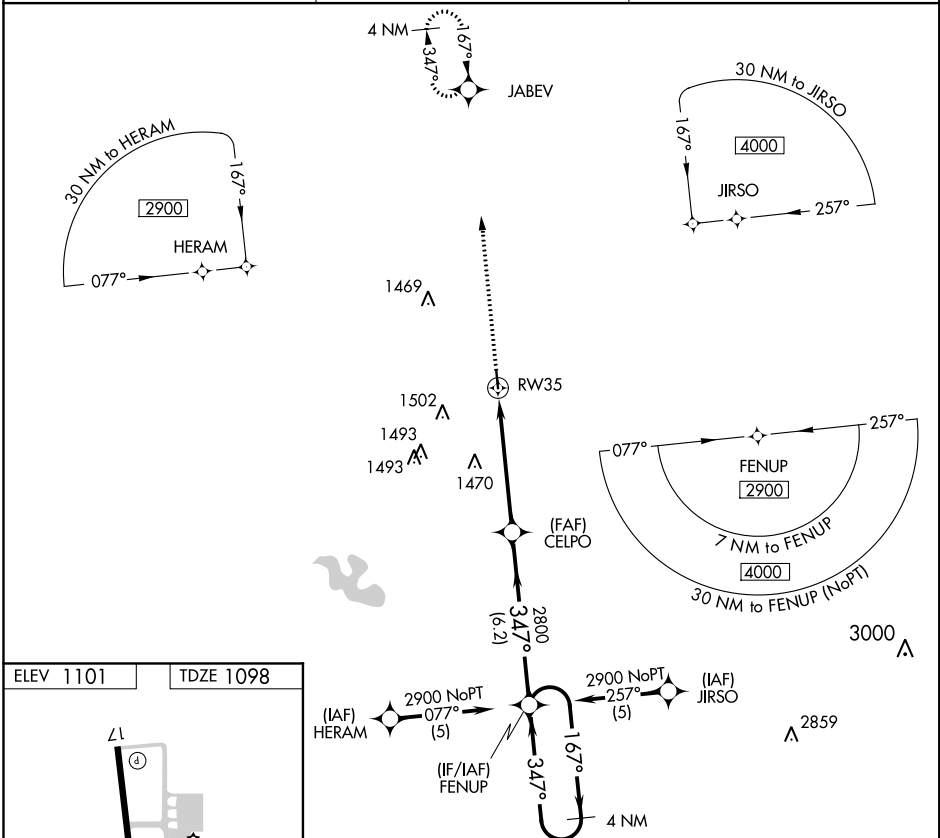
RNAV (GPS) RWY 35

BOWIE MUNI (ØF2)

APP CRS 347°	Rwy Idg 3603
TDZE 1098	
Apt Elev 1101	

⚠ DME/DME RNP-0.3 NA. Use Decatur altimeter setting; when not received, use Gainsville altimeter setting and increase all MDA 60 feet, increase Cat B and C visibility ¼ mile. Rwy 17 helicopter visibility reduction below 1 SM NA. Circling Rwy 17 NA at night.	MISSED APPROACH: Climb to 2800 direct JABEV and hold.
--	--

AWOS-3 118.75	FORT WORTH CENTER 127.95 322.325	UNICOM 122.8 (CTAF) Ø
-------------------------	--	---------------------------------



2800

↑

JABEV

✦

FENUP

4 NM Holding Pattern

CELPO

2800

167°→

←347°

2900

RW35

3.04°

TCH 40

5.2 NM

6.2 NM

CATEGORY	A	B	C	D
LNAV MDA	1780-1	682 (700-1)	1780-2 682 (700-2)	NA
CIRCLING	1780-1	679 (700-1)	1780-2 679 (700-2)	NA

BOWIE, TEXAS

Amdt 1A 07DEC17

33°36'N-97°47'W

RNAV (GPS) RWY 35

BOWIE MUNI (ØF2)

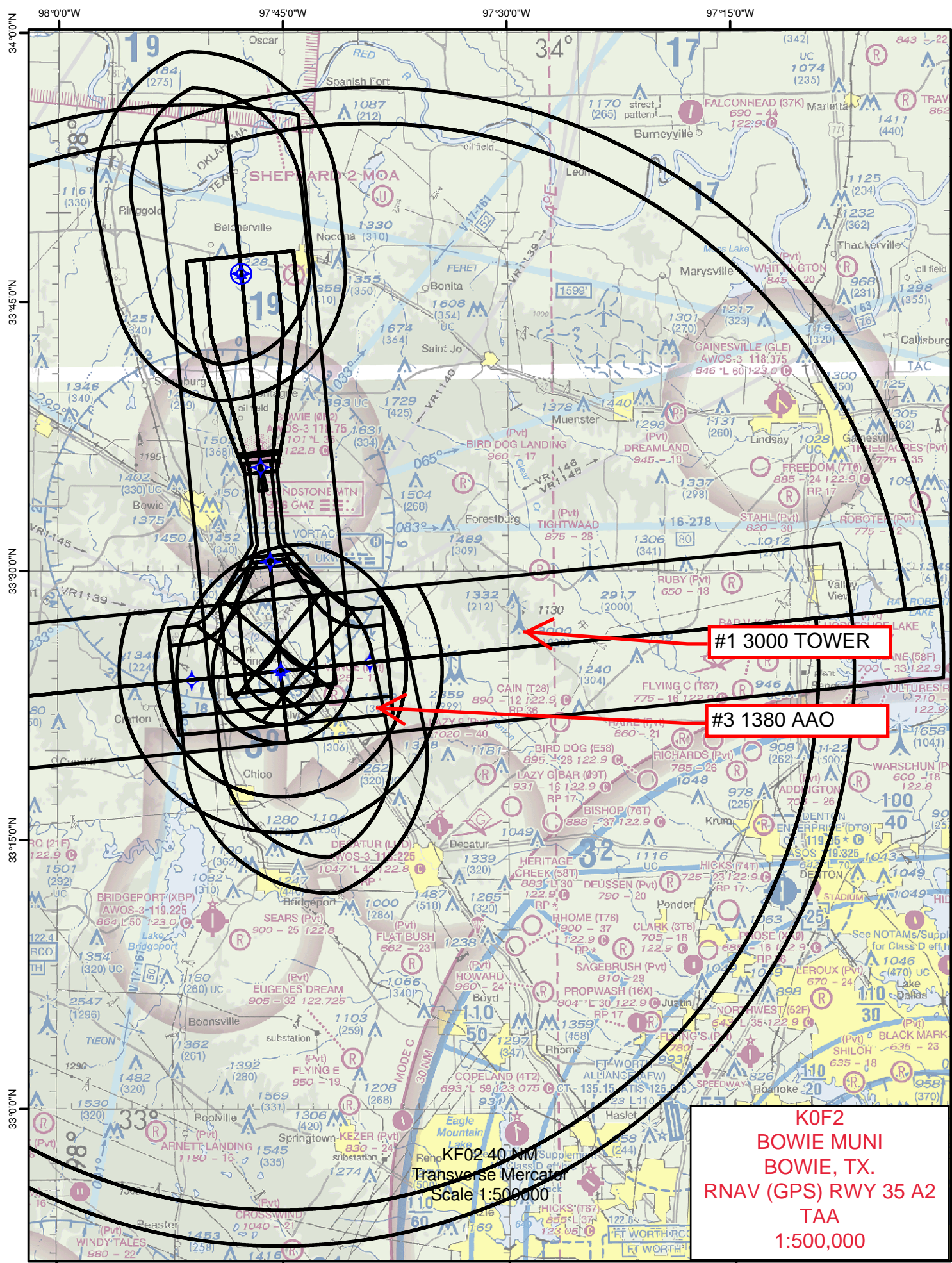
SC-2: 01 FEB 2018 to 01 MAR 2018

SC-2: 01 FEB 2018 to 01 MAR 2018

K0F2
BOWIE MUNI
BOWIE, TX.
RNAV (GPS) RWY 35 A2
TAA
1:500,000

#5 1600 WINDMILL

KF02 40-NM
transverse Mercator
Scale 1:500000



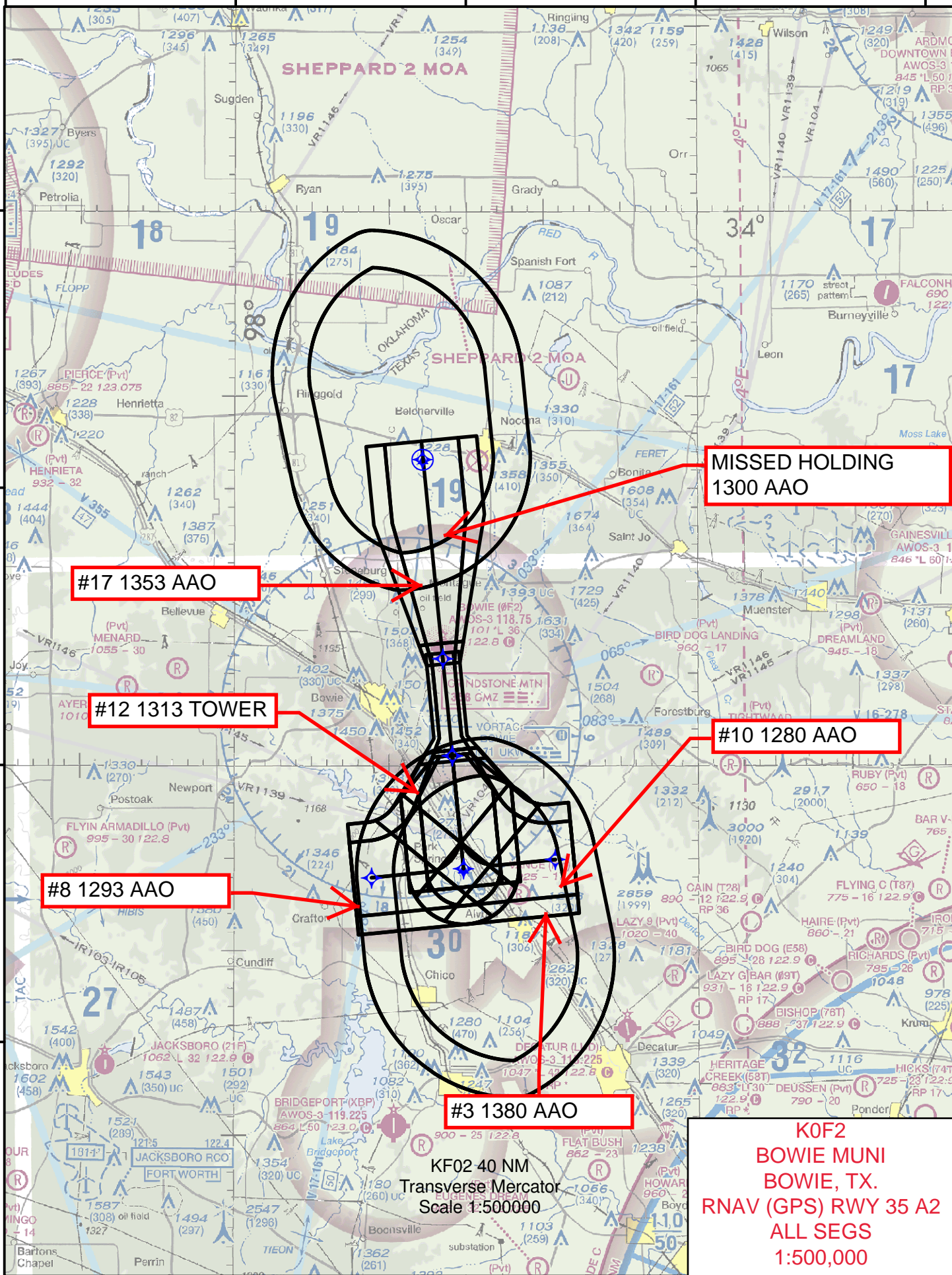
98°15'0"W 98°0'0"W 97°45'0"W 97°30'0"W 97°15'0"W

34°0'0"N

33°45'0"N

33°30'0"N

33°15'0"N



97°45'0"W

19 1242 TREE

#20 1316 TOWER

#21 1502 TOWER

#16 1270 AAO

KF02 40 NM
Transverse Mercator
Scale 1:100000

K0F2
BOWIE MUNI
BOWIE, TX.
RNAV (GPS) RWY 35 A2
LNAV/CIRC
1:100,000

33°30'0"N

97°45'0"W

#15 1209 TREE

KF02 40 NM
Transverse Mercator
Scale 1:100000

K0F2
BOWIE MUNI
BOWIE, TX.
RNAV (GPS) RWY 35 A2
LNAV/VNAV
1:100,000

33°30'0"N

97°45'0"W

#14 1102 TREE

KF02 40 NM
Transverse Mercator
Scale 1: 00000

K0F2
BOWIE MUNI
BOWIE, TX.
RNAV (GPS) RWY 35 A2
LPV
1:100,000

Federal Aviation Administration

Initial Development Notification for AIRNAV Pending Records

To: Janet Myers, National Flight Data Center, Sub Team B, AJV-5332

From: Lonnie Everhart, Manager IFP Coordination Team, AJV-531

Subject: **ACTION:** Request for Pending Records **K0F2_OF2__BOWIE MUNI, BOWIE, TX US**

The Magnetic Variation (MV) data for the airport(s) and/or facility(s) listed will be revised effective concurrent with the publication of the procedure(s) listed below. Estimated Chart Date: 7/19/2018

Current/Assigned MV 1990 New MV 2020

ECD	Airport ID		Procedure Name	AMDT #	Task Report Type Selections
7/19/2018	K0F2	OF2	NDB RWY 17 AMDT 4A	/A	ABBREV AMEND, MAGVAR
7/19/2018	K0F2	OF2	RNAV (GPS) RWY 17 AMDT 1	/A	FPT-INITIATED, MAGVAR, WAAS NEW
7/19/2018	K0F2	OF2	RNAV (GPS) RWY 35 AMDT 2	/A	FPT-INITIATED, MAGVAR, WAAS NEW

NAVAID ID / RWY	Type / Old No.	Use / New RWY/Note
GMZ (GRINDSTONE MOUNTAIN)	NDB/M	NDB

IF you have any questions please notify: lonnie.everhart@faa.gov

(405) 954-4576

Processed Wednesday, January 24, 2018